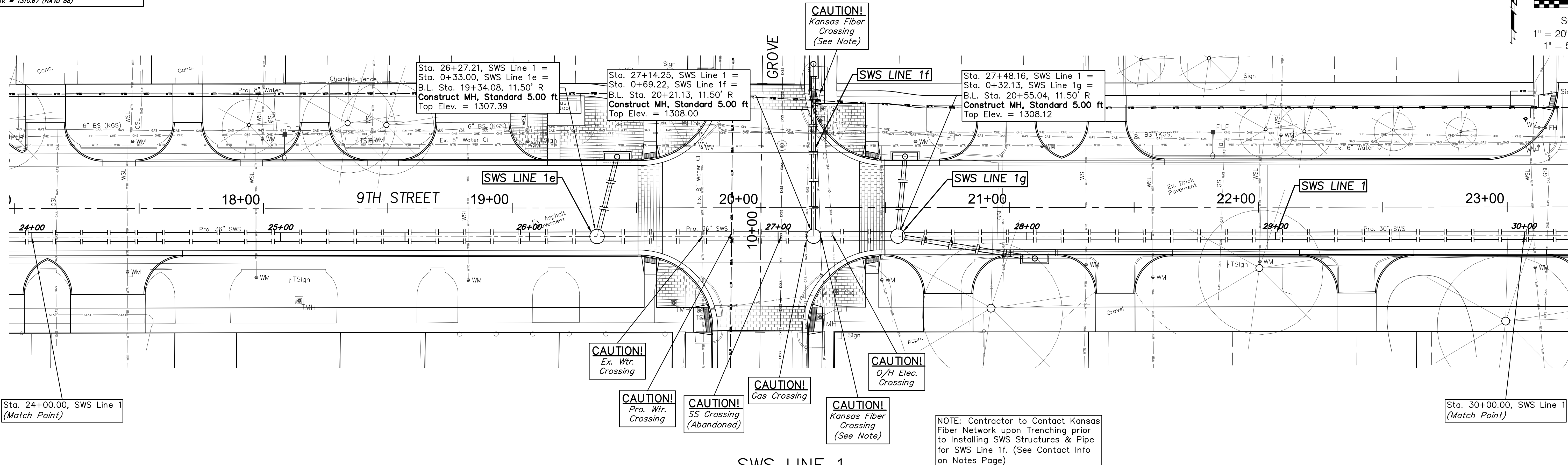
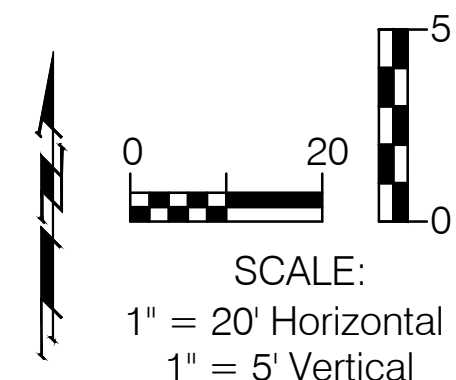


BENCHMARK:

BM #5 - Top of a 1/2" NE-most Bolt in the Base of the Sign Located on the Southeast Corner of the 9th & Grove Intersection, 40' East of the Centerline of Spruce and 46' South of the 9th Street Baseline.
Elev. = 1310.67 (NAVD 88)

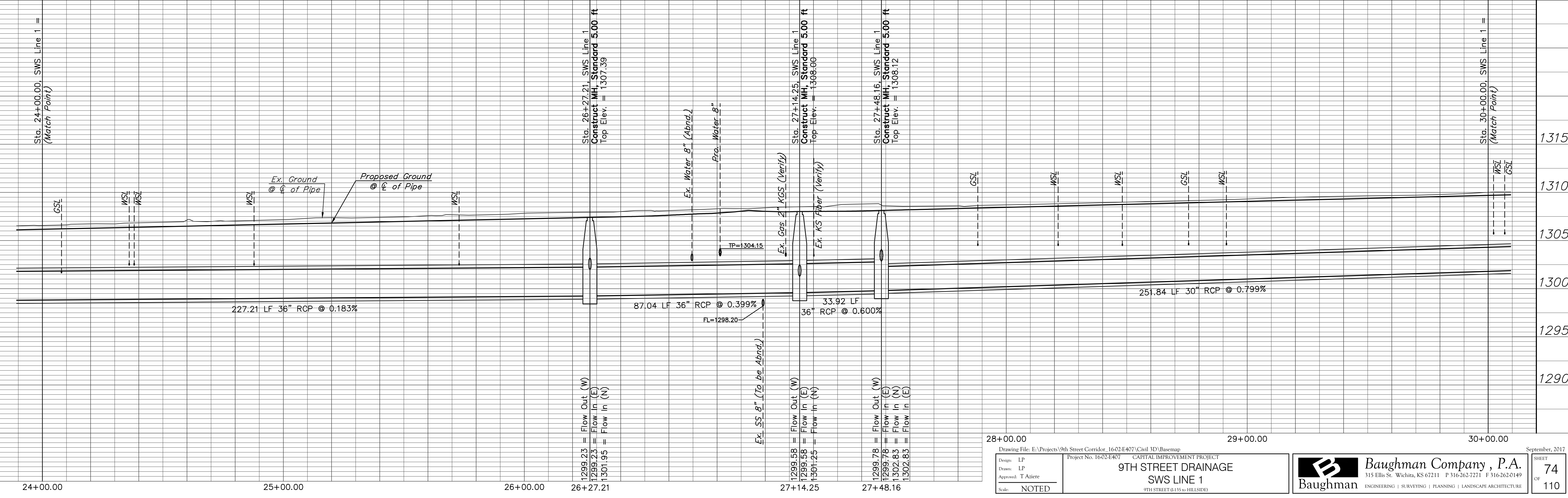


Sta. 24+00.00, SWS Line 1
(Match Point)

Sta. 30+00.00, SWS Line 1
(Match Point)

NOTE: Contractor to Contact Kansas Fiber Network upon Trenching prior to Installing SWS Structures & Pipe for SWS Line 1f. (See Contact Info on Notes Page)

SWS LINE 1



24+00.00 25+00.00 26+00.00 26+27.21 27+14.25 27+48.16 28+00.00 29+00.00 30+00.00

Drawing File: E:\Projects\9th Street Corridor 16-02-E407\Civil 3D\BaseMap Design: LP Drawn: LP Approved: T Alieri Scale: NOTED	Project No. 16-02-E407 9TH STREET DRAINAGE SWS LINE 1 9TH STREET (0.135 to HILLSIDE)	Baughman Company, P.A. 315 Ellis St. Wichita, KS 67211 P 316-262-7271 F 316-262-0149 ENGINEERING SURVEYING PLANNING LANDSCAPE ARCHITECTURE	September, 2017 SHEET 74 OF 110
--	---	--	---