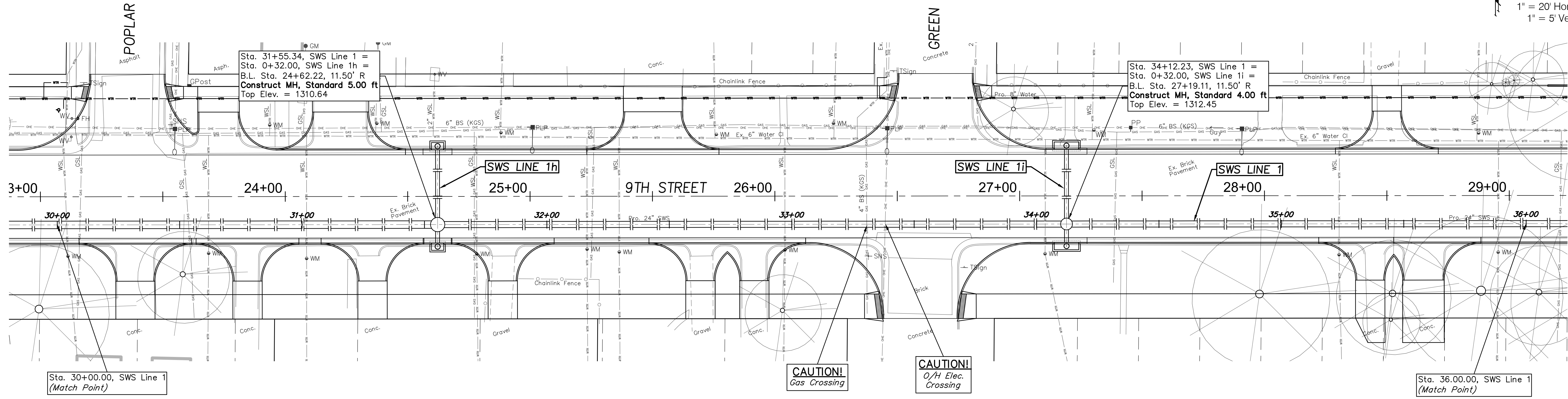
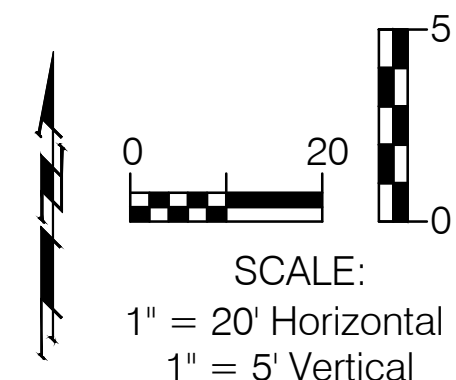


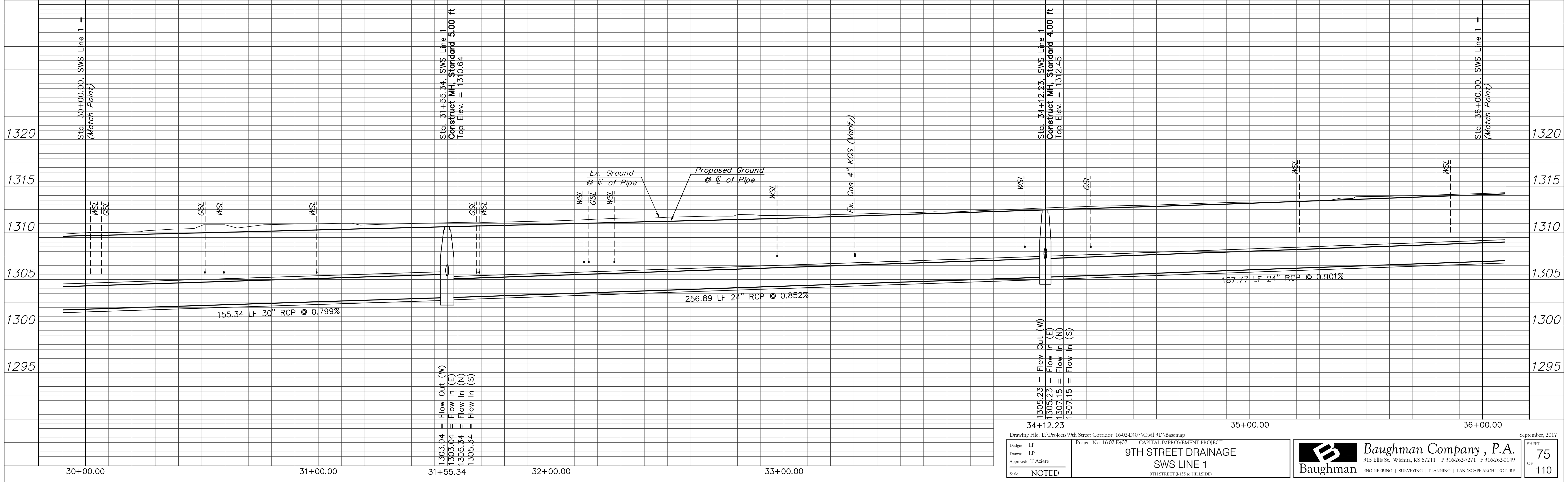
**BENCHMARK:**

BM #6 - Chiseled "X" in the Sidewalk, 23' West of the Centerline of Poplar and 55' North of the 9th Street Baseline.  
Elev. = 1310.88 (NAVD 88)

BM #7 - Chiseled "X" in the Sidewalk, 30' East of the Centerline of Green and 41' North of the 9th Street Baseline.  
Elev. = 1313.38 (NAVD 88)



**SWS LINE 1**



Design: LP Drawn: LP Approved: T Alieri Scale: NOTED	Drawing File: E:\Projects\9th Street Corridor_16-02-E407\Civil 3D\Basemap Project No. 16-02-E407 CAPITAL IMPROVEMENT PROJECT <b>9TH STREET DRAINAGE</b> SWS LINE 1 9TH STREET (I-35 to HILLSIDE)	September, 2017 SHEET <b>75</b> OF <b>110</b>
---	---	---

