

DATE	
BY	
REFERENCES NOTED	
REFERENCES CHECKED	

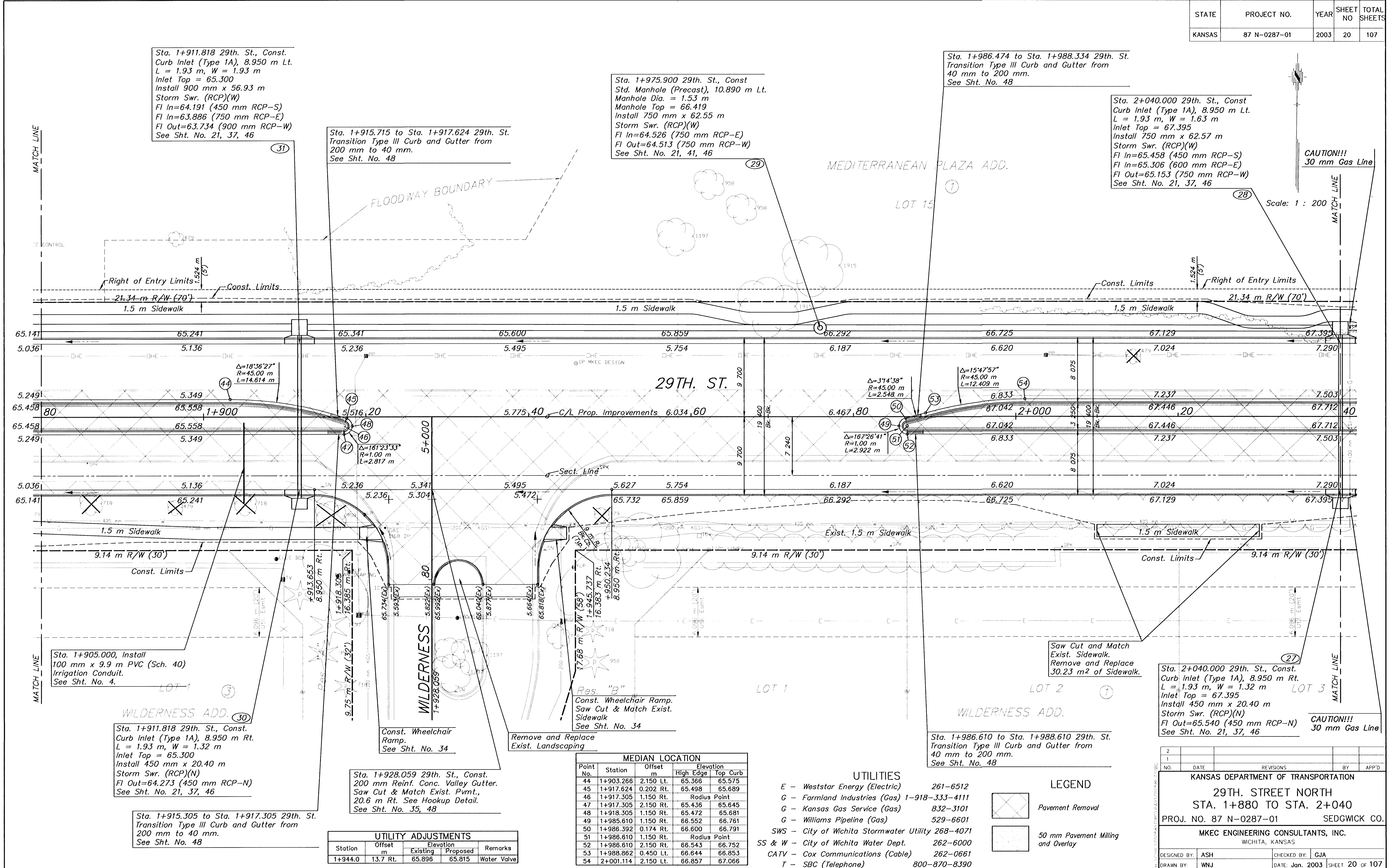
Sta. 1+911.818 29th. St., Const.  
Curb Inlet (Type 1A), 8.950 m Lt.  
L = 1.93 m, W = 1.93 m  
Inlet Top = 65.300  
Install 900 mm x 56.93 m  
Storm Swr. (RCP)(W)  
Fl In=64.191 (450 mm RCP-S)  
Fl In=63.886 (750 mm RCP-E)  
Fl Out=63.734 (900 mm RCP-W)  
See Sht. No. 21, 37, 46

Sta. 1+975.900 29th. St., Const  
Std. Manhole (Precast), 10.890 m Lt.  
Manhole Dia. = 1.53 m  
Manhole Top = 66.419  
Install 750 mm x 62.55 m  
Storm Swr. (RCP)(W)  
Fl In=64.526 (750 mm RCP-E)  
Fl Out=64.513 (750 mm RCP-W)  
See Sht. No. 21, 41, 46

Sta. 1+986.474 to Sta. 1+988.334 29th. St.  
Transition Type III Curb and Gutter from  
40 mm to 200 mm.  
See Sht. No. 48

Sta. 2+040.000 29th. St., Const  
Curb Inlet (Type 1A), 8.950 m Lt.  
L = 1.93 m, W = 1.63 m  
Inlet Top = 67.395  
Install 750 mm x 62.57 m  
Storm Swr. (RCP)(W)  
Fl In=65.458 (450 mm RCP-S)  
Fl In=65.306 (600 mm RCP-E)  
Fl Out=65.153 (750 mm RCP-W)  
See Sht. No. 21, 37, 46

Sta. 2+040.000 29th. St., Const.  
Curb Inlet (Type 1A), 8.950 m Rt.  
L = 1.93 m, W = 1.32 m  
Inlet Top = 67.395  
Install 450 mm x 20.40 m  
Storm Swr. (RCP)(N)  
Fl Out=65.540 (450 mm RCP-N)  
See Sht. No. 21, 37, 46



Station	Offset m	Elevation Existing	Elevation Proposed	Remarks
1+944.0	13.7 Rt.	65.896	65.815	Water Valve

Point No.	Station	Offset m	Elevation	
			High Edge	Top Curb
44	1+903.268	2.150 Lt.	65.366	65.575
45	1+917.624	0.202 Rt.	65.498	65.689
46	1+917.305	1.150 Rt.		Radius Point
47	1+917.305	2.150 Rt.	65.436	65.645
48	1+918.305	1.150 Rt.	65.472	65.681
49	1+985.610	1.150 Rt.	66.552	66.761
50	1+986.392	0.174 Rt.	66.600	66.791
51	1+986.610	1.150 Rt.		Radius Point
52	1+986.610	2.150 Rt.	66.543	66.752
53	1+988.862	0.450 Lt.	66.644	66.853
54	2+001.114	2.150 Lt.	66.857	67.066

- UTILITIES**
- E - Weststar Energy (Electric) 261-6512
  - G - Farmland Industries (Gas) 1-918-333-4111
  - G - Kansas Gas Service (Gas) 832-3101
  - G - Williams Pipeline (Gas) 529-6601
  - SWS - City of Wichita Stormwater Utility 268-4071
  - SS & W - City of Wichita Water Dept. 262-6000
  - CATV - Cox Communications (Cable) 262-0661
  - T - SBC (Telephone) 800-870-8390

- LEGEND**
- Pavement Removal
  - 50 mm Pavement Milling and Overlay

2  
1  
NO. DATE REVISIONS BY APPD

KANSAS DEPARTMENT OF TRANSPORTATION  
29TH. STREET NORTH  
STA. 1+880 TO STA. 2+040  
PROJ. NO. 87 N-0287-01 SEDGWICK CO.

MKEC ENGINEERING CONSULTANTS, INC.  
WICHITA, KANSAS

DESIGNED BY: ASH CHECKED BY: GJA  
DRAWN BY: WNJ DATE: Jan. 2003 SHEET 20 OF 107