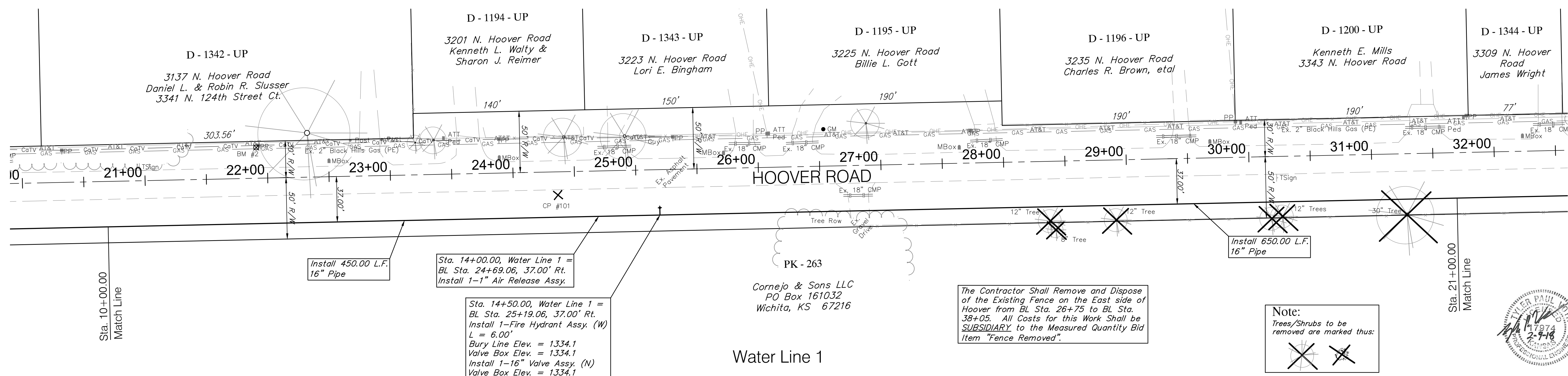
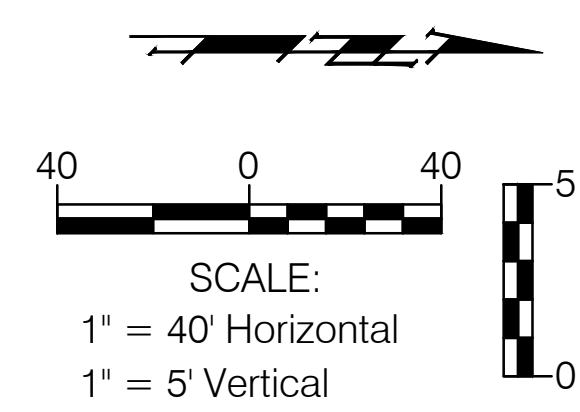


BENCHMARK:
 BM #2 - Railroad Spike in the East Face of Power Pole in Front of 3137 N. Hoover Road.
 B.L. Sta. 21+91.18, 25.07' Lt.
 Elev. = 1358.70 (NAVD 88)



Water Line 1

The Contractor Shall Remove and Dispose of the Existing Fence on the East Side of Hoover from BL Sta. 26+75 to BL Sta. 38+05. All Costs for this Work Shall be SUBSIDIARY to the Measured Quantity Bid Item "Fence Removed".

Note:
 Trees/Shrubs to be removed are marked thus:

