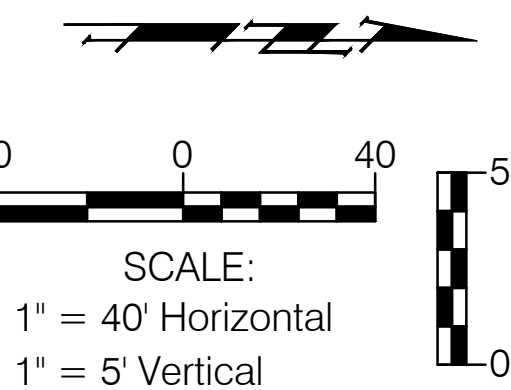


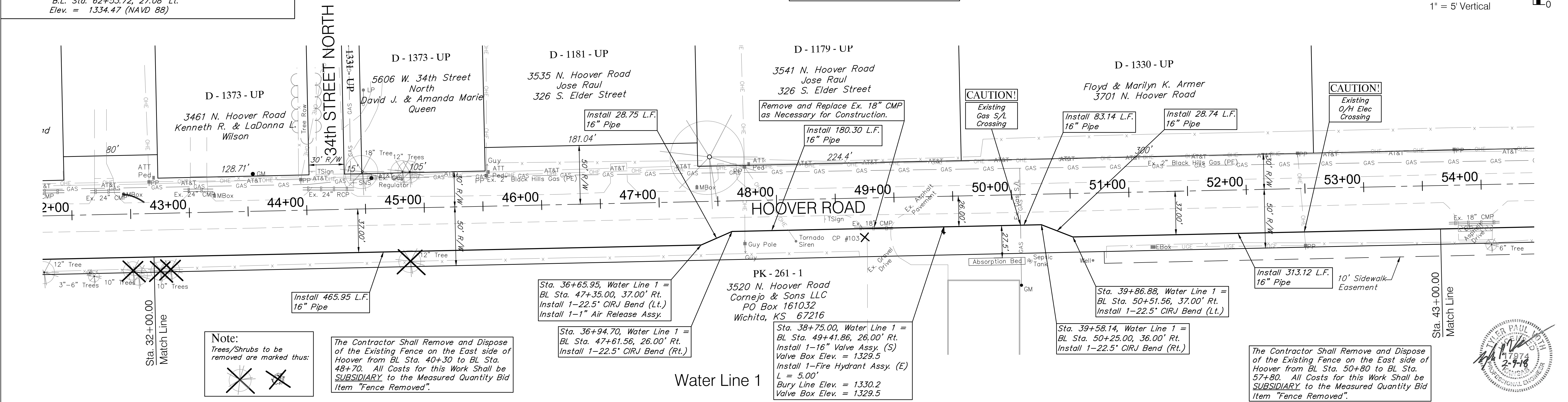
BENCHMARKS:

BM #3 - Railroad Spike in Power Pole in the Northwest Corner of 33rd Street North & Hoover.
 B.L. Sta. 36+65.85, 62.45' Lt.
 Elev. = 1331.00 (NAVD 88)

BM #4 - Railroad Spike in Power Pole in the Southwest Corner of 37th Street North & Hoover.
 B.L. Sta. 62+53.72, 27.08' Lt.
 Elev. = 1334.47 (NAVD 88)



Contact John Crosby with Sedgwick County Emergency Management at 660-5959 or John.Crosby@sedgwick.gov to Relocate or Temporarily Brace the Existing Tornado Siren as Required.



Note:
 Trees/Shrubs to be removed are marked thus:

The Contractor Shall Remove and Dispose of the Existing Fence on the East side of Hoover from BL Sta. 40+30 to BL Sta. 48+70. All Costs for this Work Shall be **SUBSIDIARY** to the Measured Quantity Bid Item "Fence Removed".

The Contractor Shall Remove and Dispose of the Existing Fence on the East side of Hoover from BL Sta. 50+80 to BL Sta. 57+80. All Costs for this Work Shall be **SUBSIDIARY** to the Measured Quantity Bid Item "Fence Removed".

