

BENCHMARK:
City of Wichita Benchmark Disk at South End of Hubguard on the SW Cor. of R.C.B.C., West Side of Rock Road, 706' North-northwest of the Northwest Corner of Lot 44, Block A, Rocky Ford Addition. Elev. = 1368.14 NAVD88

"□" on Top of Curb by Fire Hydrant. South of Concrete Drive at 2800 S. Rock Road. Elev. = 1379.84 NAVD88

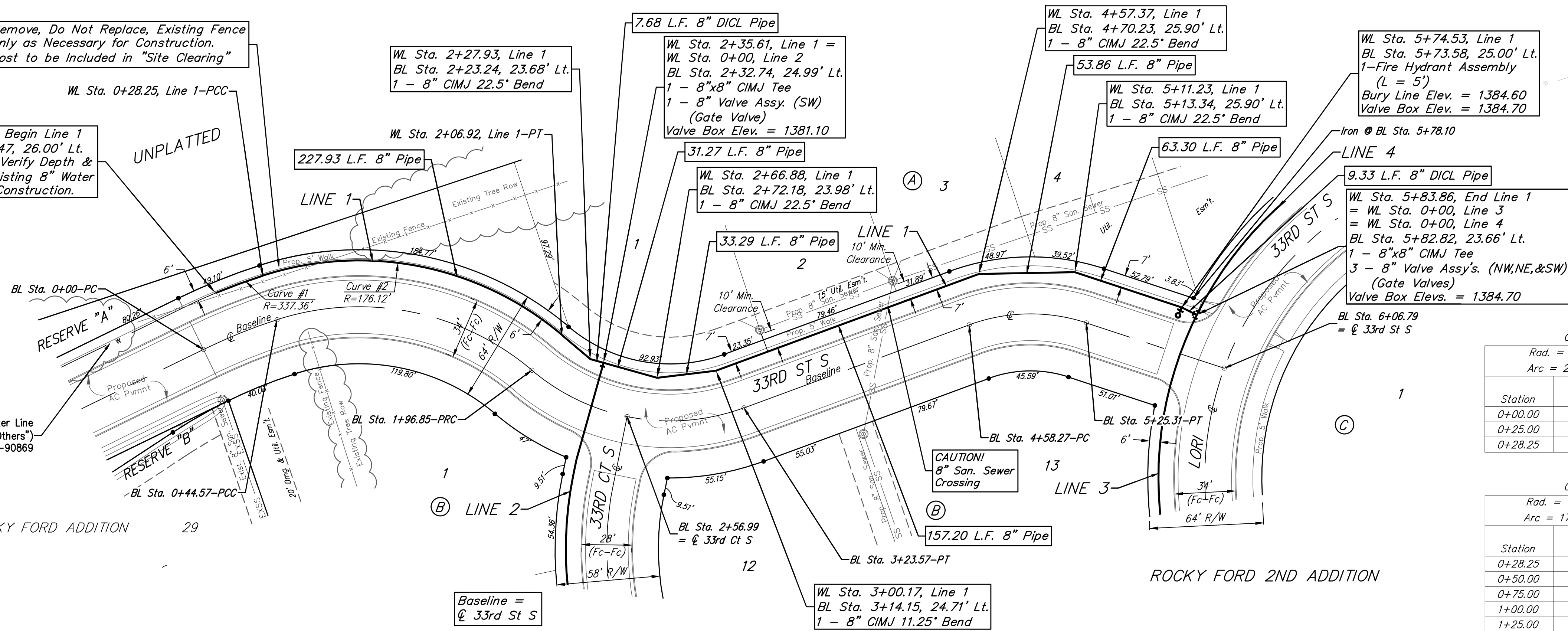
WL Sta. 0+00, Begin Line 1
BL Sta. 0+18.47, 26.00' Lt.
Contractor to Verify Depth & Location of Existing 8" Water Line Prior to Construction.

Remove, Do Not Replace, Existing Fence Only as Necessary for Construction. Cost to be Included in "Site Clearing"

Existing trees which are in direct conflict with proposed new construction shall be removed by the Contractor ONLY with Developer's approval. Trees not in direct conflict with proposed new construction shall remain and be protected from damage. Cost to be included in "Site Clearing"

Prop. 8" Water Line (by "Others")
Proj. #448-90869

ROCKY FORD ADDITION 29



Curve #1
Curve Data Based on Centerline of Pipe
Rad. = 337.36' Delta = 44°7'53" Tangent = 14.13'
Arc = 28.25' L.C. = 28.24' Def./Ft. = 5.09528 Min.

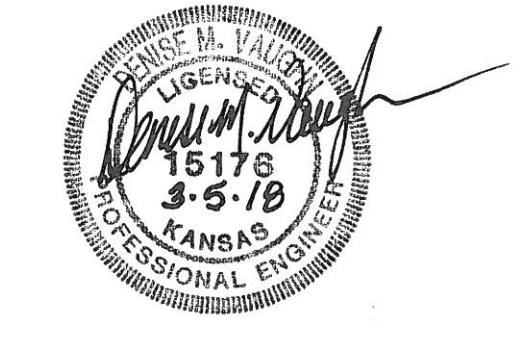
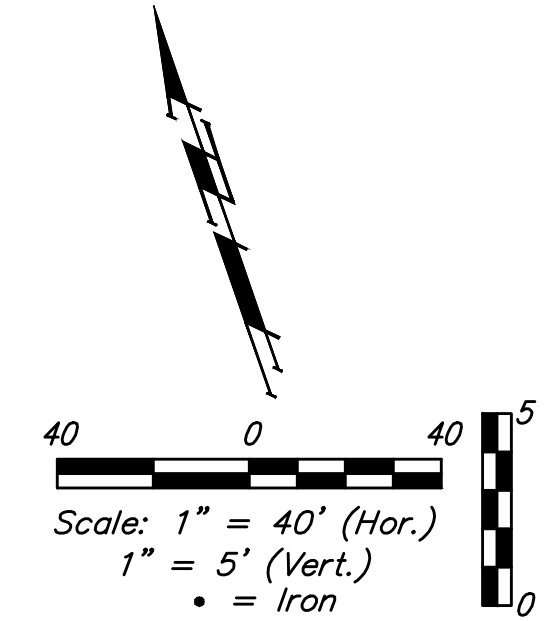
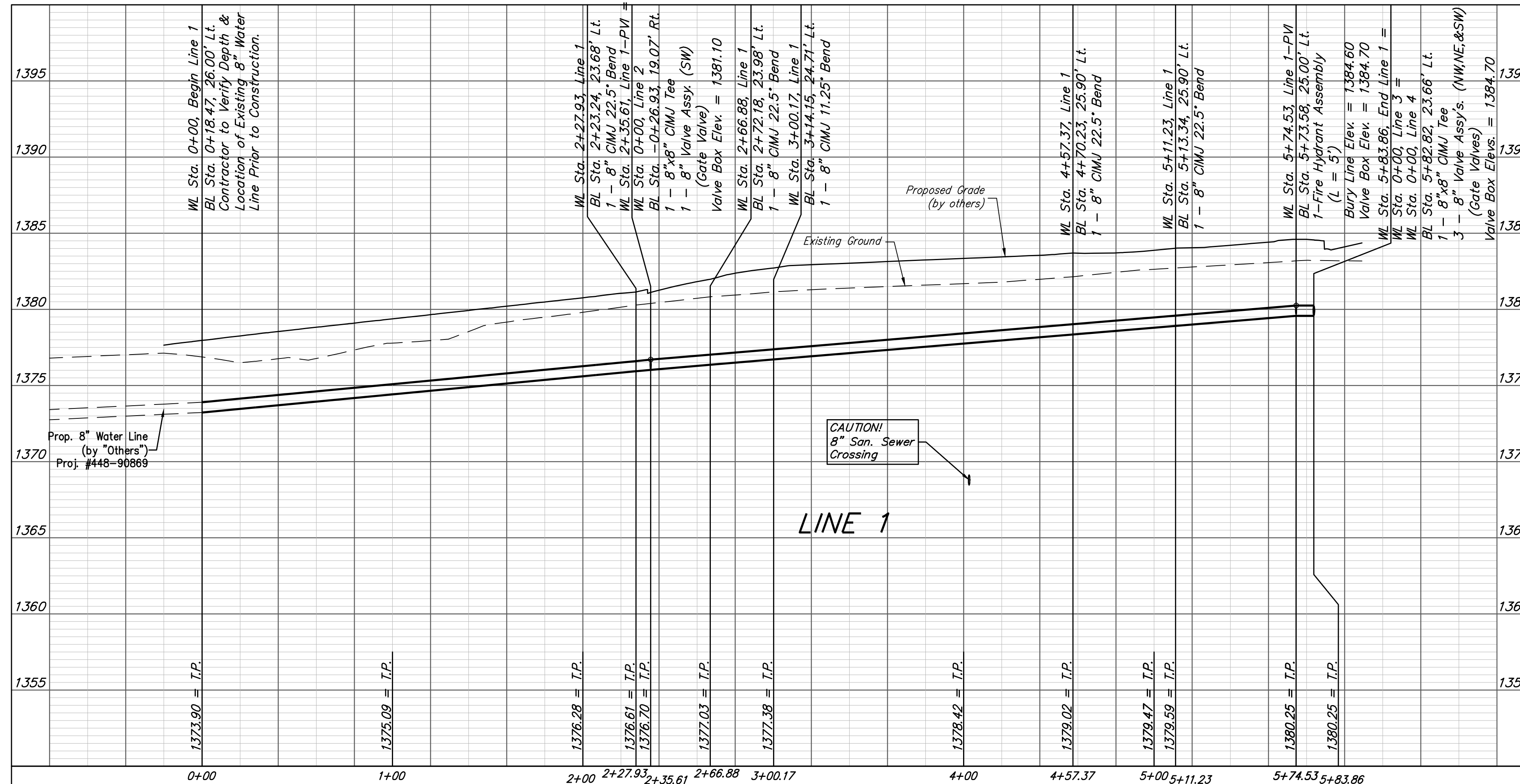
Station	Arc	Chord 8' Left	Defl.	Total Defl.
0+00.00	-	-	0°00'00"	0°00'00"
0+25.00	25.00'	25.59'	2°07'23"	2°07'23"
0+28.25	3.25'	3.33'	0°16'34"	2°23'57"

Curve #2
Curve Data Based on Centerline of Pipe
Rad. = 176.12' Delta = 58°07'28" Tangent = 97.88'
Arc = 178.67' L.C. = 171.10' Def./Ft. = 9.75952 Min.

Station	Arc	Chord 8' Left	Defl.	Total Defl.
0+28.25	-	-	0°00'00"	0°00'00"
0+50.00	21.75'	22.72'	3°32'16"	3°32'16"
0+75.00	25.00'	26.11'	4°03'59"	7°36'15"
1+00.00	25.00'	26.11'	4°04'00"	11°40'15"
1+25.00	25.00'	26.11'	4°03'59"	15°44'14"
1+50.00	25.00'	26.11'	4°03'59"	19°48'13"
1+75.00	25.00'	26.11'	4°04'00"	23°52'13"
2+00.00	25.00'	26.11'	4°03'59"	27°56'12"
2+06.92	6.92'	7.23'	1°07'32"	29°03'44"

FIRE HYDRANTS REQUIRED

LINE	STATION	BURY LINE ELEVATION	TOP OF PIPE ELEVATION	FIRE HYDRANT BURY REQUIRED*	VALVE STEM EXT. REQUIRED (R)*
1	5+74.53	1384.60	1380.25	5.00	-



Baughman Rocky Ford 2nd Addition - Phase I
LINE 1
Water Distribution System

Baughman Company, P.A. 315 Ellis St. Wichita, KS 67211 P 316-262-7271 F 316-262-0149
ENGINEERING | SURVEYING | PLANNING | LANDSCAPE ARCHITECTURE

PROJECT NUMBER: 448-90867
DESIGN: DMV
DRAWN: JAK
APPROVED: DATE: 3/06/18
SCALE: Noted
SHEET: 4 OF 15

Revisions:
1. 3/6/18 - Initial Design
2. 3/13/18 - Final Design

8:\Projects\Rocky Ford 2nd Addition_Engineering\Phase I\Wtr_L12\ER92\WTR PLANS.DWG