

BENCHMARK:
 City of Wichita Benchmark Disk at South End of Hubguard on the SW Cor. of R.C.B.C., West Side of Rock Road, 706' North-northwest of the Northwest Corner of Lot 44, Block A, Rocky Ford Addition.
 Elev. = 1368.14 NAVD88

"□" on Top of Curb by Fire Hydrant. South of Concrete Drive at 2800 S. Rock Road.
 Elev. = 1379.84 NAVD88

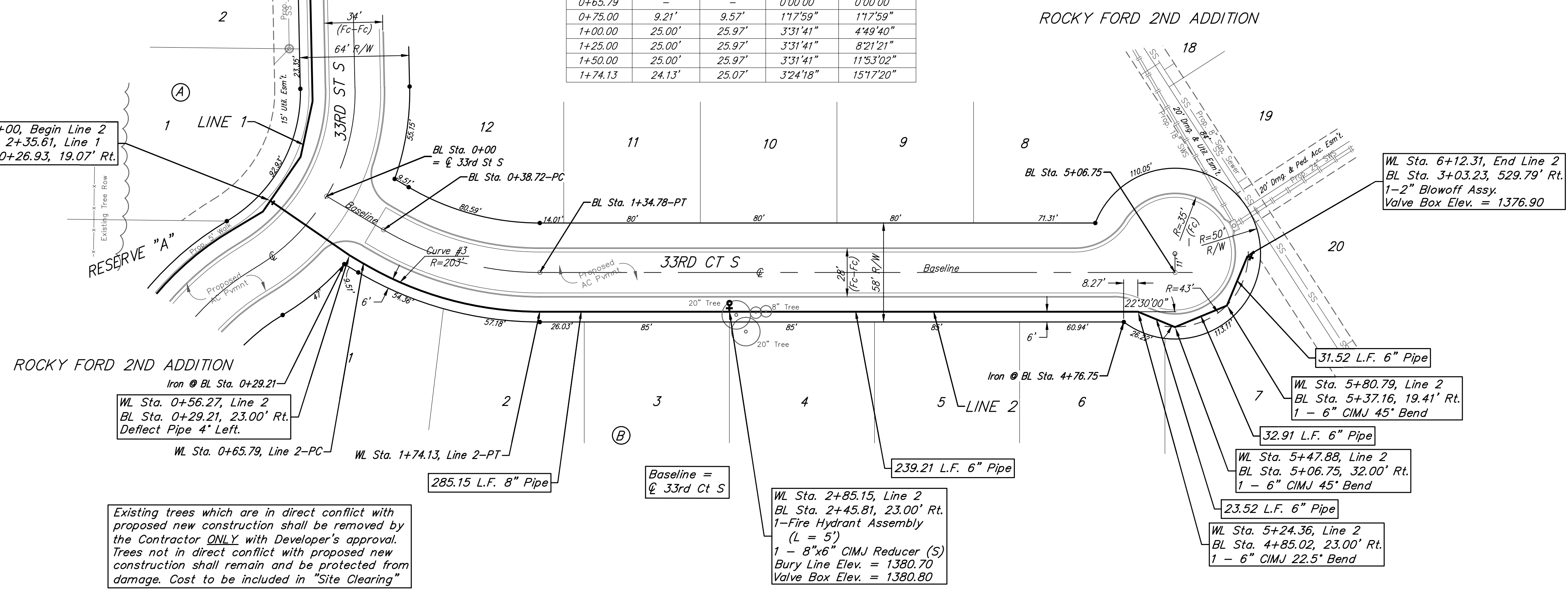
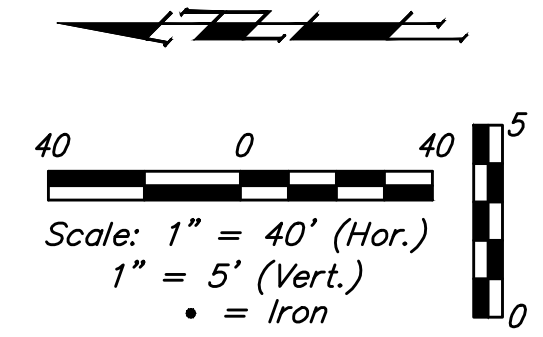
Curve #3

Curve Data Based on Centerline of Pipe

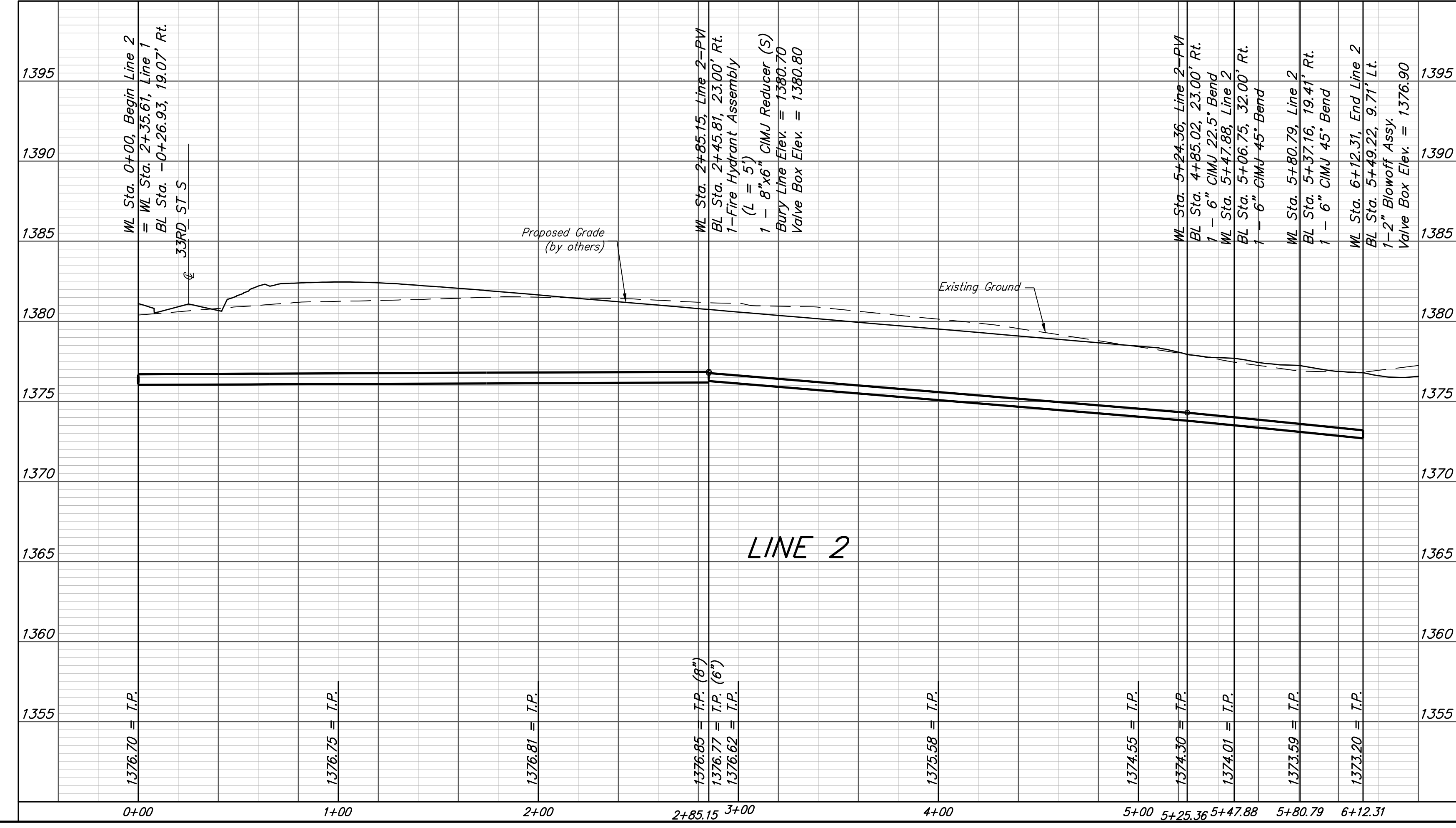
Station	Arc	Chord 8' Right	Defl.	Total Defl.
0+65.79	-	-	0'00"00"	0'00"00"
0+75.00	9.21'	9.57'	1'17"59"	1'17"59"
1+00.00	25.00'	25.97'	3'31"41"	4'49"40"
1+25.00	25.00'	25.97'	3'31"41"	8'21"21"
1+50.00	25.00'	25.97'	3'31"41"	11'53"02"
1+74.13	24.13'	25.07'	3'24"18"	15'17"20"

FIRE HYDRANTS REQUIRED

LINE	STATION	BURY LINE ELEVATION	TOP OF PIPE ELEVATION	FIRE HYDRANT BURY REQUIRED*	VALVE STEM EXT. REQUIRED (ft)*
2	2+85.15	1380.70	1376.85	4.50	-



Existing trees which are in direct conflict with proposed new construction shall be removed by the Contractor ONLY with Developer's approval. Trees not in direct conflict with proposed new construction shall remain and be protected from damage. Cost to be included in "Site Clearing"



Baughman Rocky Ford 2nd Addition - Phase I
LINE 2
 Water Distribution System

Baughman Company, P.A. 315 Ellis St. Wichita, KS 67211 P 316-262-7271 F 316-262-0149
 ENGINEERING | SURVEYING | PLANNING | LANDSCAPE ARCHITECTURE

PROJECT NUMBER 448-90867	DESIGN DMV	DRAWN JAK
REVISIONS:	APPROVED	DATE 3/06/18
	SCALE Noted	
	SHEET	5 OF 15

E:\Projects\Rocky Ford 2nd Addition\Engineering\Phase I\Wtr_17-12-ES92\WTR PLANS.DWG