

BENCHMARK:
 City of Wichita Benchmark Disk at South End of Hubguard on the SW Cor. of R.C.B.C., West Side of Rock Road, 706' North-northwest of the Northwest Corner of Lot 44, Block A, Rocky Ford Addition.
 Elev. = 1368.14 NAVD88

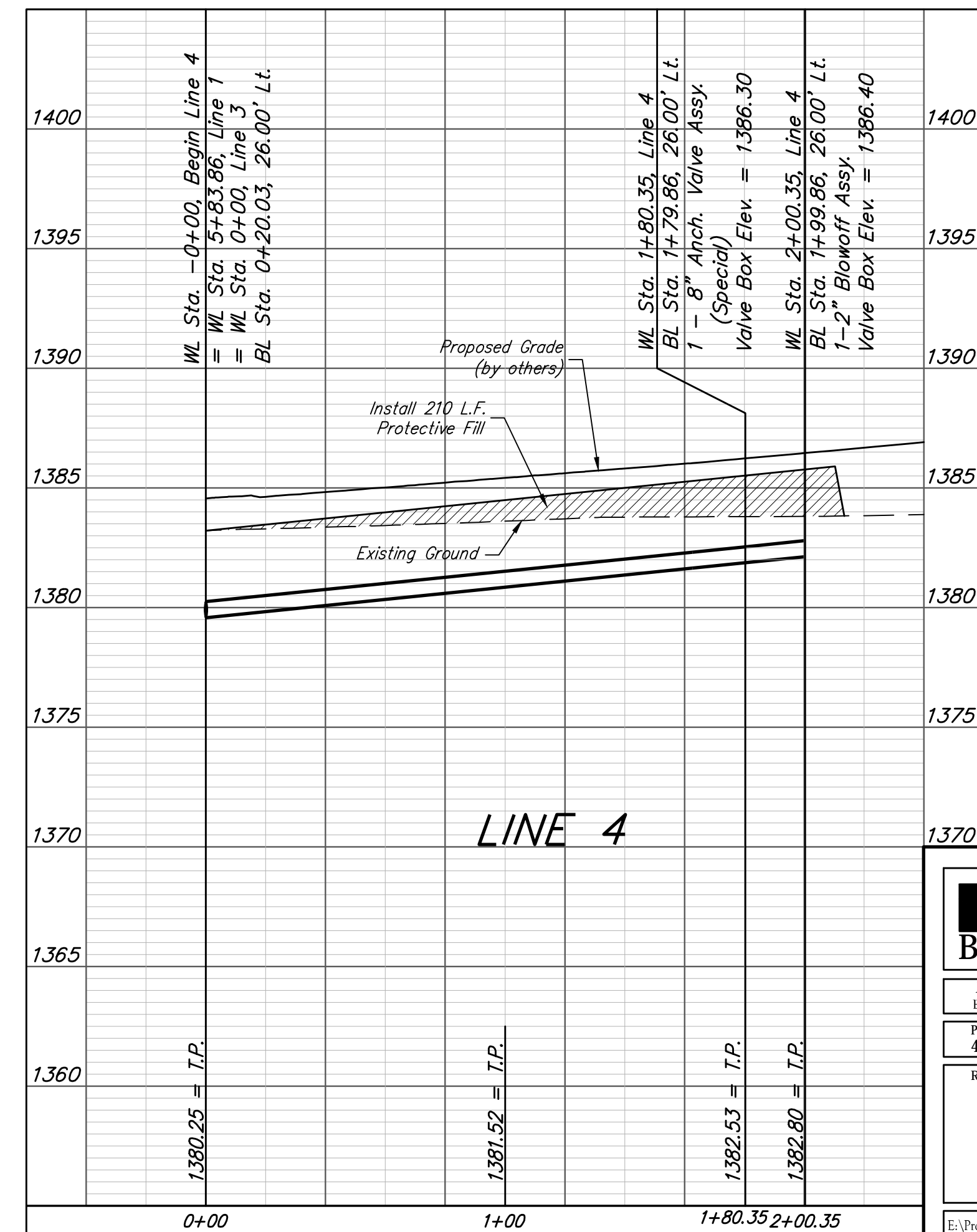
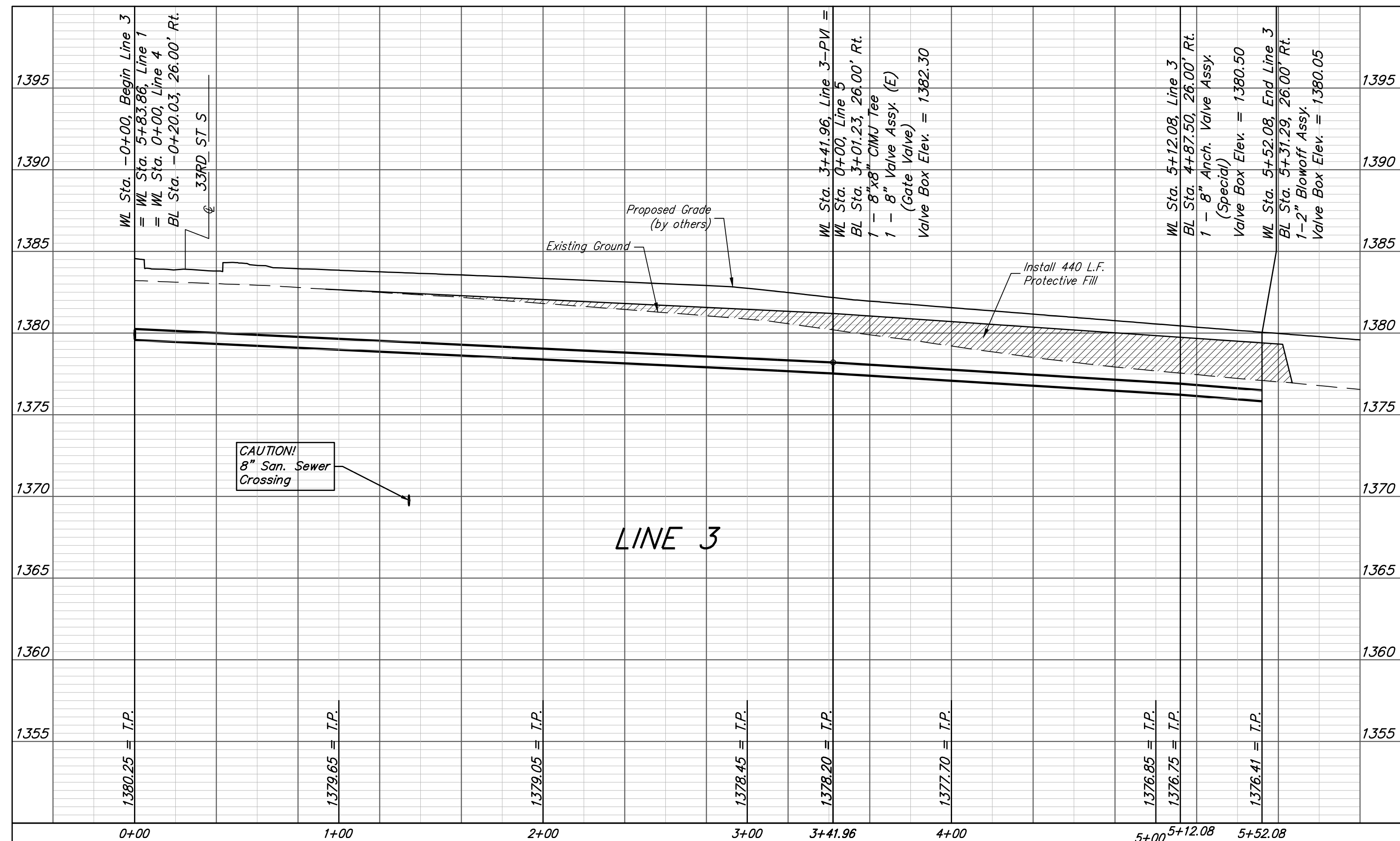
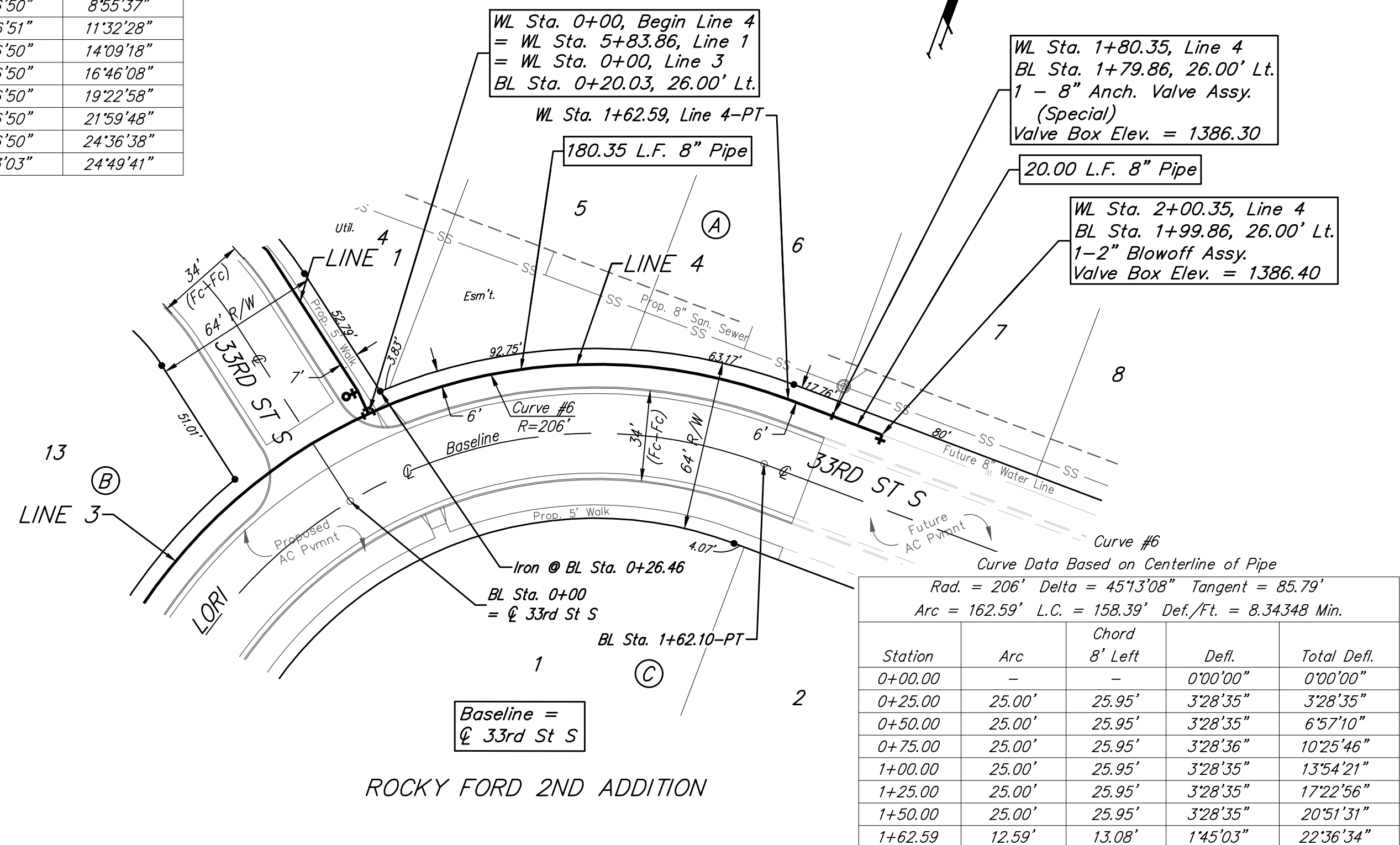
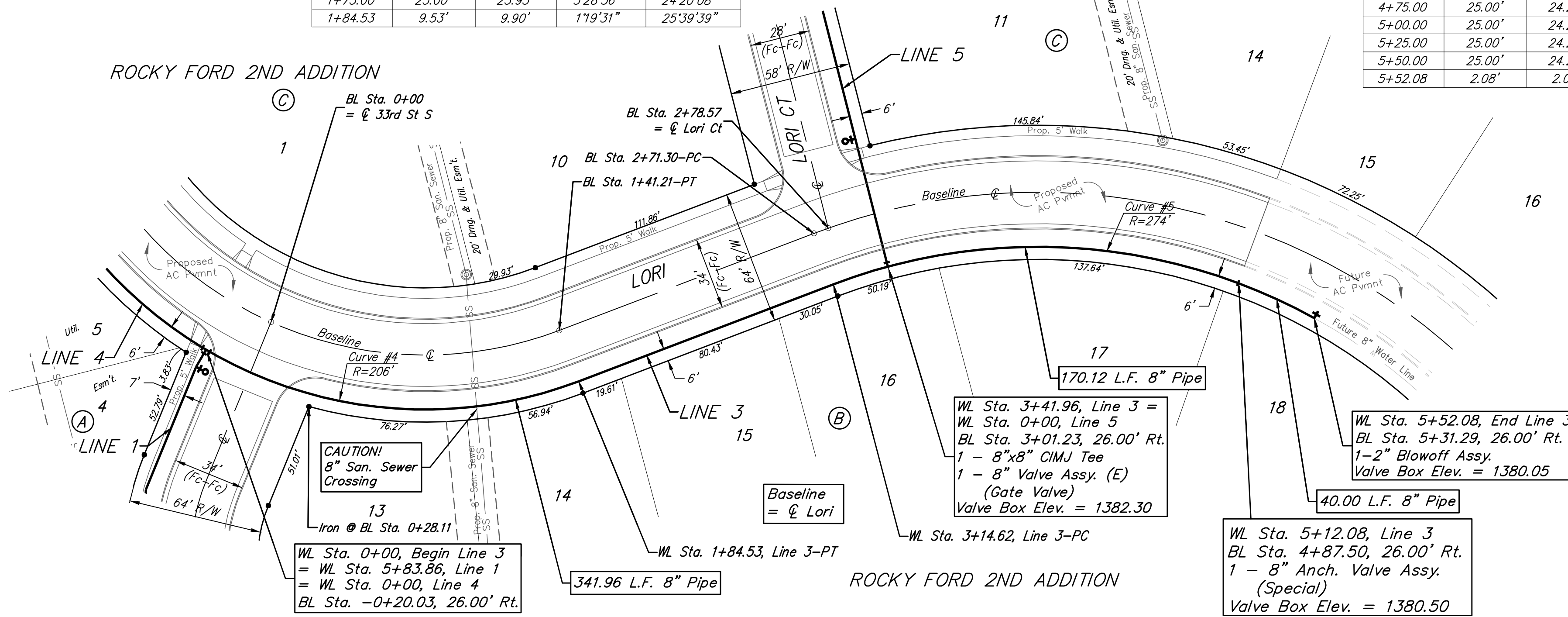
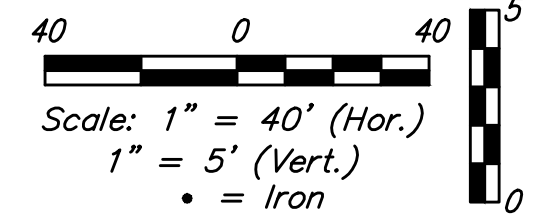
"□" on Top of Curb by Fire Hydrant. South of Concrete Drive at 2800 S. Rock Road.
 Elev. = 1379.84 NAVD88

Curve #4
 Curve Data Based on Centerline of Pipe
 Rad. = 206' Delta = 51°19'17" Tangent = 98.57'
 Arc = 184.53' L.C. = 178.41' Def./Ft. = 8.34358 Min.

Station	Arc	Chord 8' Right	Defl.	Total Defl.
0+00.00	-	-	0'00"00"	0'00"00"
0+25.00	25.00'	25.95'	3'28'35"	3'28'35"
0+50.00	25.00'	25.95'	3'28'36"	6'57'11"
0+75.00	25.00'	25.95'	3'28'35"	10'25'46"
1+00.00	25.00'	25.95'	3'28'36"	13'54'22"
1+25.00	25.00'	25.95'	3'28'35"	17'22'57"
1+50.00	25.00'	25.95'	3'28'35"	20'51'32"
1+75.00	25.00'	25.95'	3'28'36"	24'20'08"
1+84.53	9.53'	9.90'	1'19'31"	25'39'39"

Curve #5
 Curve Data Based on Centerline of Pipe
 Rad. = 274' Delta = 49°39'22" Tangent = 126.77'
 Arc = 237.46' L.C. = 230.10' Def./Ft. = 6.27341 Min.

Station	Arc	Chord 8' Right	Defl.	Total Defl.
3+14.62	-	-	0'00"00"	0'00"00"
3+25.00	10.38'	10.08'	1'05'07"	1'05'07"
3+50.00	25.00'	24.26'	2'36'50"	3'41'57"
3+75.00	25.00'	24.26'	2'36'50"	6'18'47"
4+00.00	25.00'	24.26'	2'36'50"	8'55'37"
4+25.00	25.00'	24.26'	2'36'51"	11'32'28"
4+50.00	25.00'	24.26'	2'36'50"	14'09'18"
4+75.00	25.00'	24.26'	2'36'50"	16'46'08"
5+00.00	25.00'	24.26'	2'36'50"	19'22'58"
5+25.00	25.00'	24.26'	2'36'50"	21'59'48"
5+50.00	25.00'	24.26'	2'36'50"	24'36'38"
5+52.08	2.08'	2.02'	0'13'03"	24'49'41"



Baughman Rocky Ford 2nd Addition - Phase I
LINE 3 & LINE 4
 Water Distribution System

Baughman Company, P.A. 315 Ellis St. Wichita, KS 67211 P 316 262 7271 F 316 262 0149
 ENGINEERING | SURVEYING | PLANNING | LANDSCAPE ARCHITECTURE

PROJECT NUMBER: 448-90867
 DESIGN: DMV
 DRAWN: JAK
 APPROVED: [Signature]
 DATE: 3/06/18
 SCALE: Noted
 SHEET: 6 OF 15