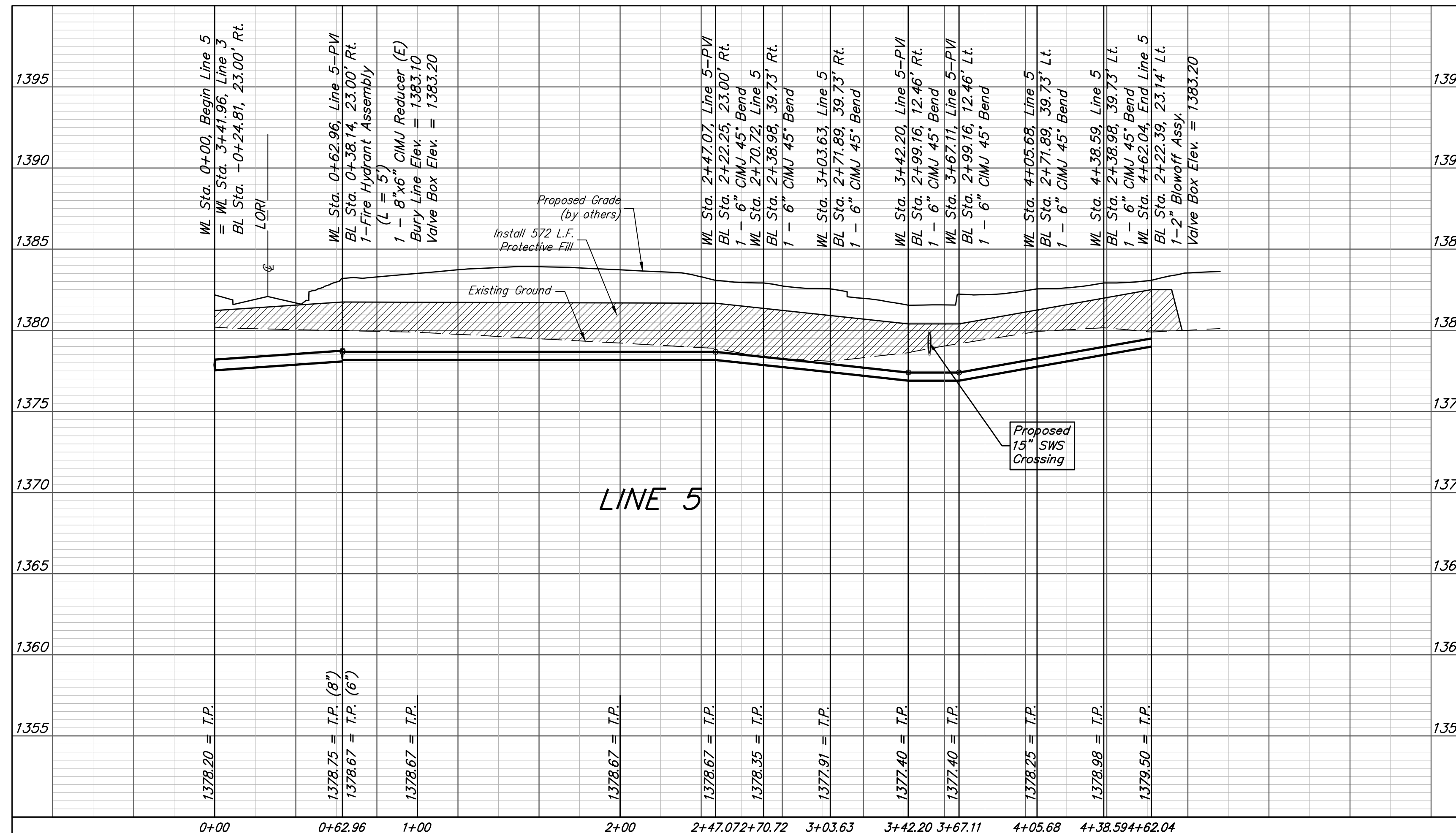
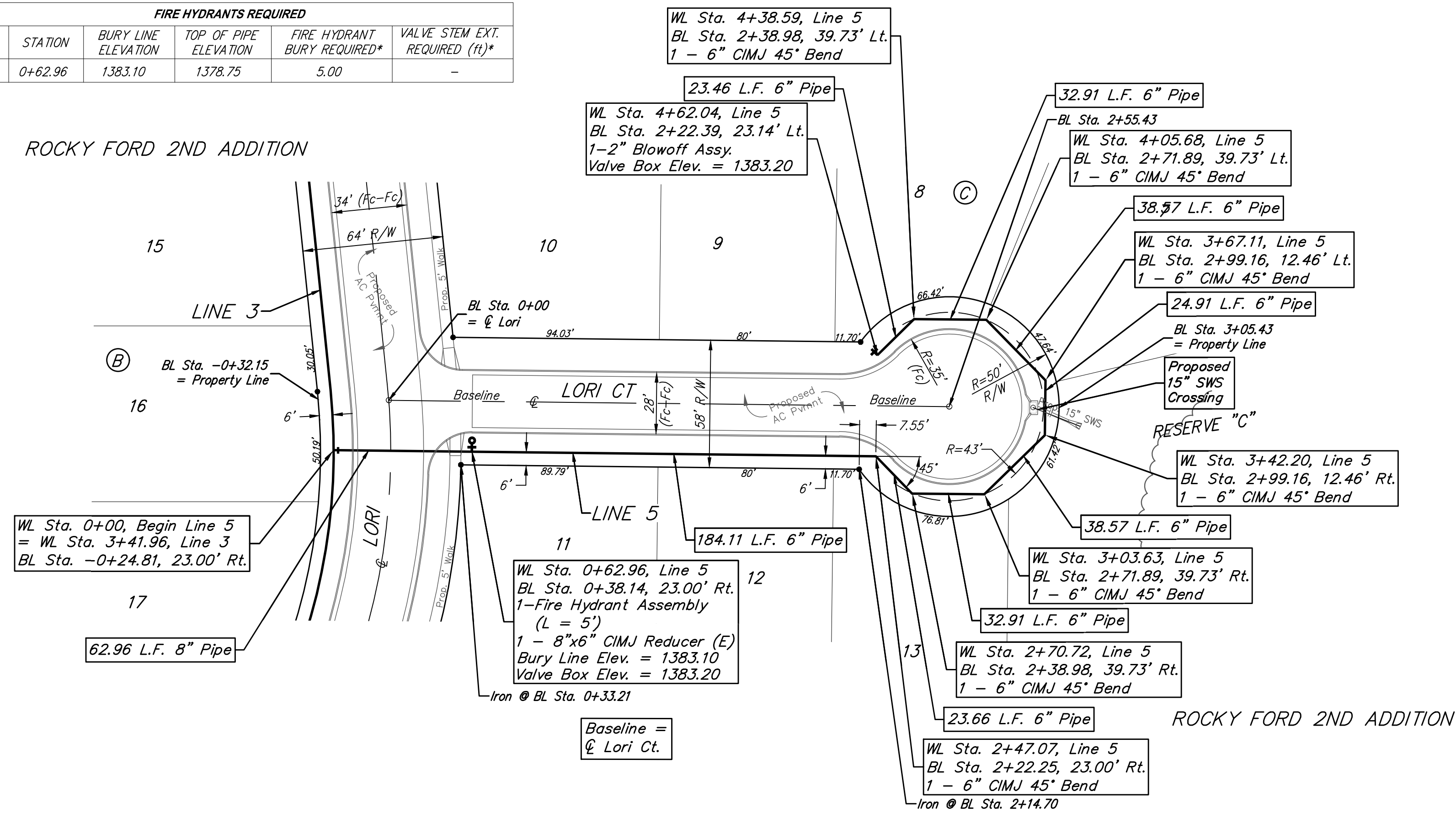


BENCHMARK:
 City of Wichita Benchmark Disk at
 South End of Hubguard on the SW
 Cor. of R.C.B.C., West Side of Rock
 Road, 706' North-northwest of the
 Northwest Corner of Lot 44, Block
 A, Rocky Ford Addition.
 Elev. = 1368.14 NAVD88

"□" on Top of Curb by Fire
 Hydrant. South of Concrete Drive
 at 2800 S. Rock Road.
 Elev. = 1379.84 NAVD88

FIRE HYDRANTS REQUIRED					
LINE	STATION	BURY LINE ELEVATION	TOP OF PIPE ELEVATION	FIRE HYDRANT BURY REQUIRED*	VALVE STEM EXT. REQUIRED (ft)*
5	0+62.96	1383.10	1378.75	5.00	-

ROCKY FORD 2ND ADDITION



Baughman Rocky Ford 2nd Addition - Phase I
LINE 5
 Water Distribution System

Baughman Company, P.A. 315 Ellis St. Wichita, KS 67211 P 316-262-7271 F 316-262-0149
 ENGINEERING | SURVEYING | PLANNING | LANDSCAPE ARCHITECTURE

PROJECT NUMBER: 448-00867 DESIGN: DMV DRAWN: JAK
 APPROVED: DATE: 3/06/18

REVISIONS:

SCALE: Noted
 SHEET: **7 OF 15**