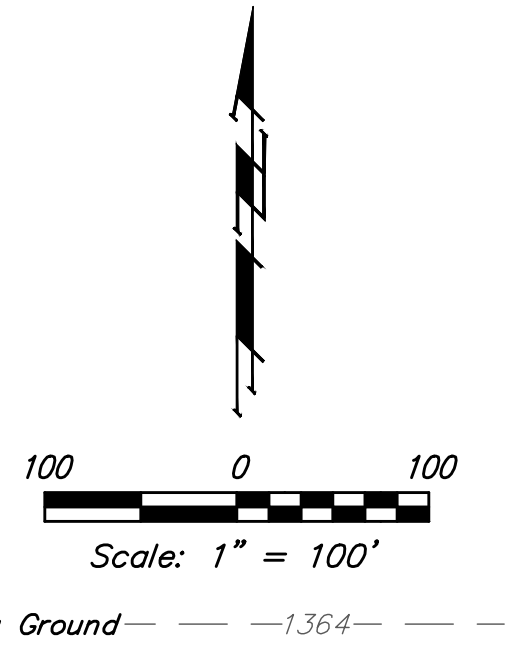
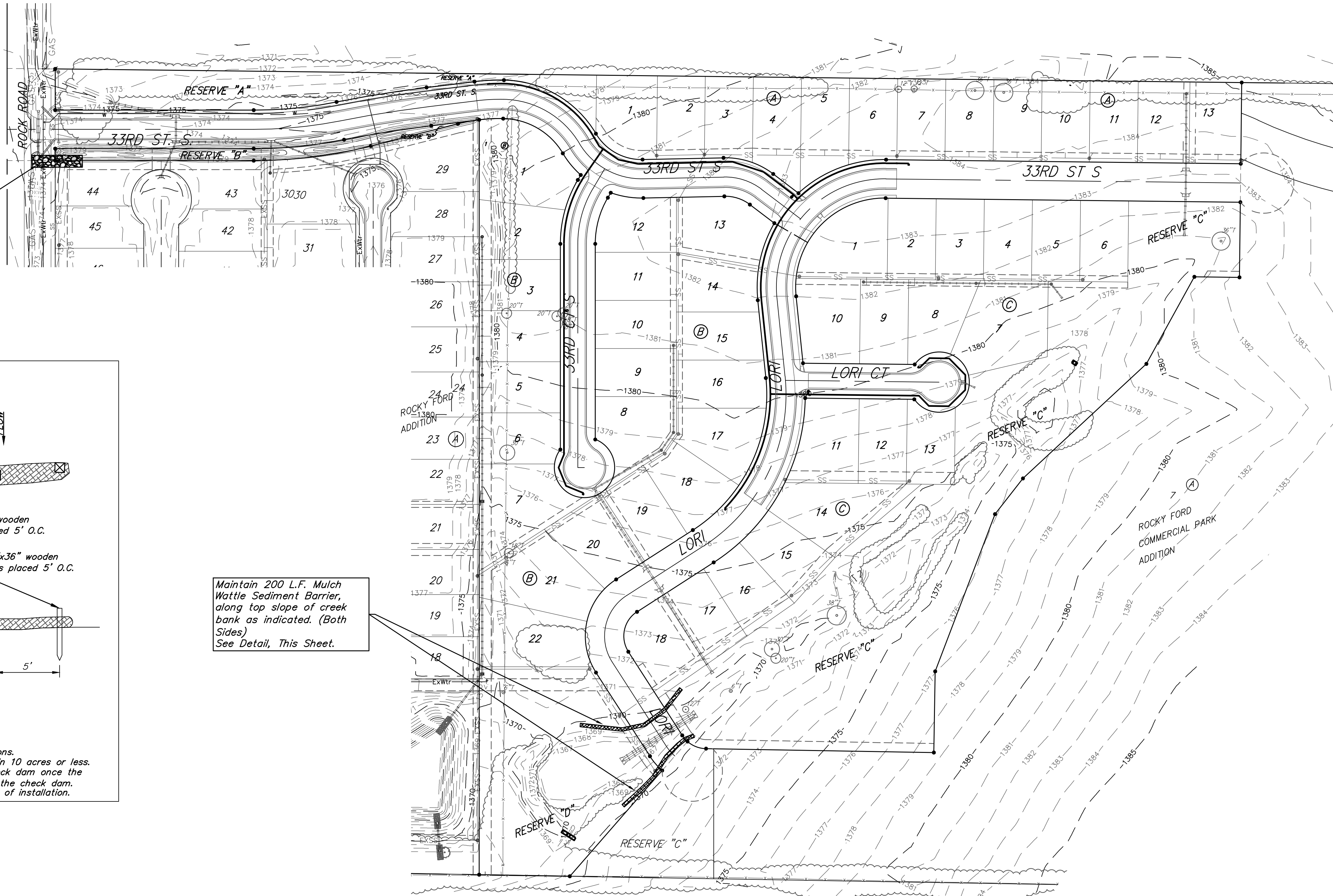


**BENCHMARK:**  
 City of Wichita Benchmark Disk at  
 South End of Hubguard on the SW  
 Cor. of R.C.B.C., West Side of Rock  
 Road, 706' North-northwest of the  
 Northwest Corner of Lot 44, Block  
 A, Rocky Ford Addition.  
 Elev. = 1368.14 NAVD88

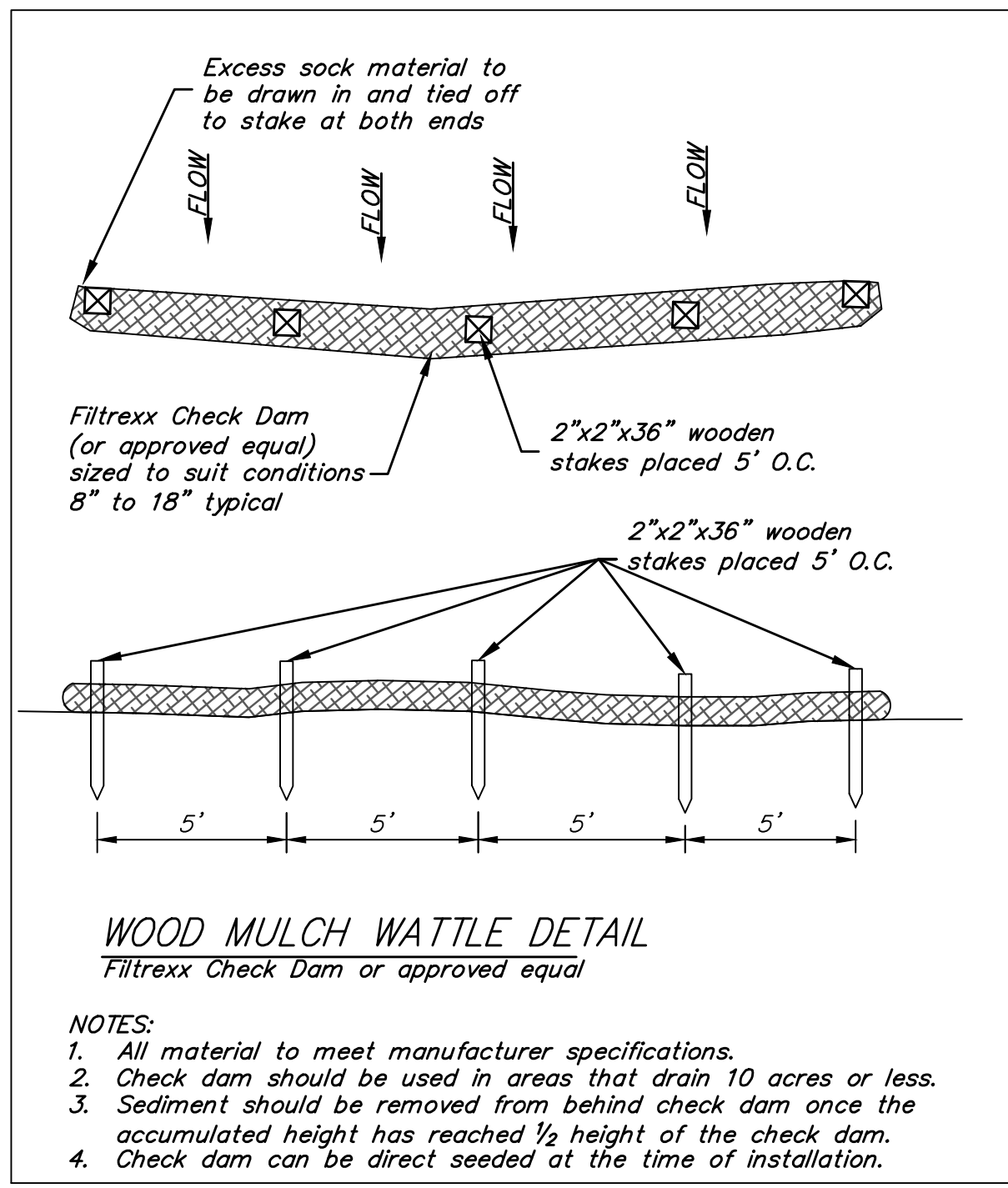
"□" on Top of Curb by Fire  
 Hydrant. South of Concrete Drive  
 at 2800 S. Rock Road.  
 Elev. = 1379.84 NAVD88



Maintain 50'x12' Gravel  
 Construction Entrance  
 Installed with Rocky Ford  
 Sewer Main Project.



Maintain 200 L.F. Mulch  
 Wattle Sediment Barrier,  
 along top slope of creek  
 bank as indicated. (Both  
 Sides)  
 See Detail, This Sheet.



- NOTES:**
- Contractor shall make sure all erosion control is in place before project is accepted. This plan represents the minimum standard. Any additional erosion control measures shall be installed by the Contractor as needed.
  - Removal of Gravel Construction Entrance for pavement construction shall be included in bid item "Site Clearing & Restoration"
  - This Plan is Not To Be Used As A Comprehensive Grading Plan. All Spot Elevations Are Proposed & Subject To Change.
- All areas disturbed during construction shall be seeded, mulched, and fertilized as per Cover Sheet General Notes.

EROSION CONTROL MEASURE	INSTALL	MAINTAIN
CONSTRUCTION ENTRANCE (EA)	0	1
MULCH WATTLE SEDIMENT BARRIER (LF)	0	200

\* ALL EXISTING BMPs INCLUDING CONSTRUCTION ENTRANCE, SEDIMENT BARRIERS, SILT FENCE, CUT-OFF TRENCH, AND EROSION CONTROL MAT SHALL BE MAINTAINED AND REPAIRED IF NECESSARY.



**Baughman** Rocky Ford 2nd Addition - Phase I  
**EROSION CONTROL**  
 Water Distribution System

Baughman Company, P.A. 315 Ellis St. Wichita, KS 67211 P 316-262-7271 F 316-262-0149  
 ENGINEERING | SURVEYING | PLANNING | LANDSCAPE ARCHITECTURE

PROJECT NUMBER 448-00867	DESIGN DMV	DRAWN JAK
REVISIONS:	APPROVED	DATE 3/06/18
	SCALE Noted	SHEET

**8 OF 15**

C:\Projects\Rocky Ford 2nd Addition\_\Engineering\Phase I\Wtr\_17-12-E892\WTR PLANS.DWG