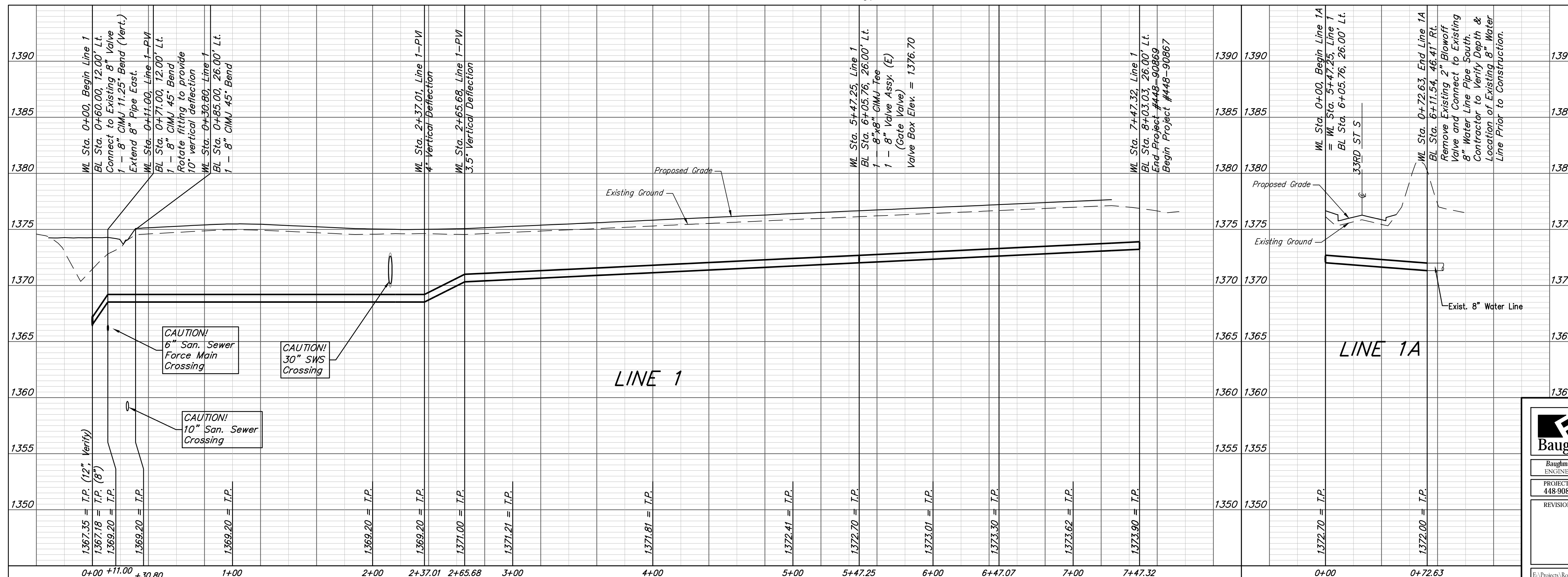
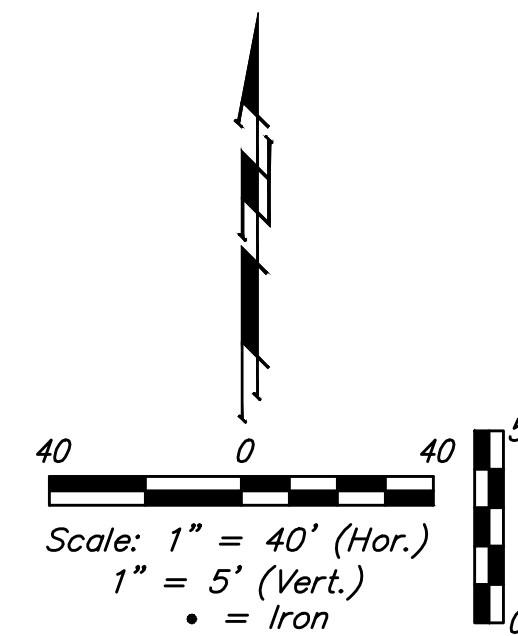
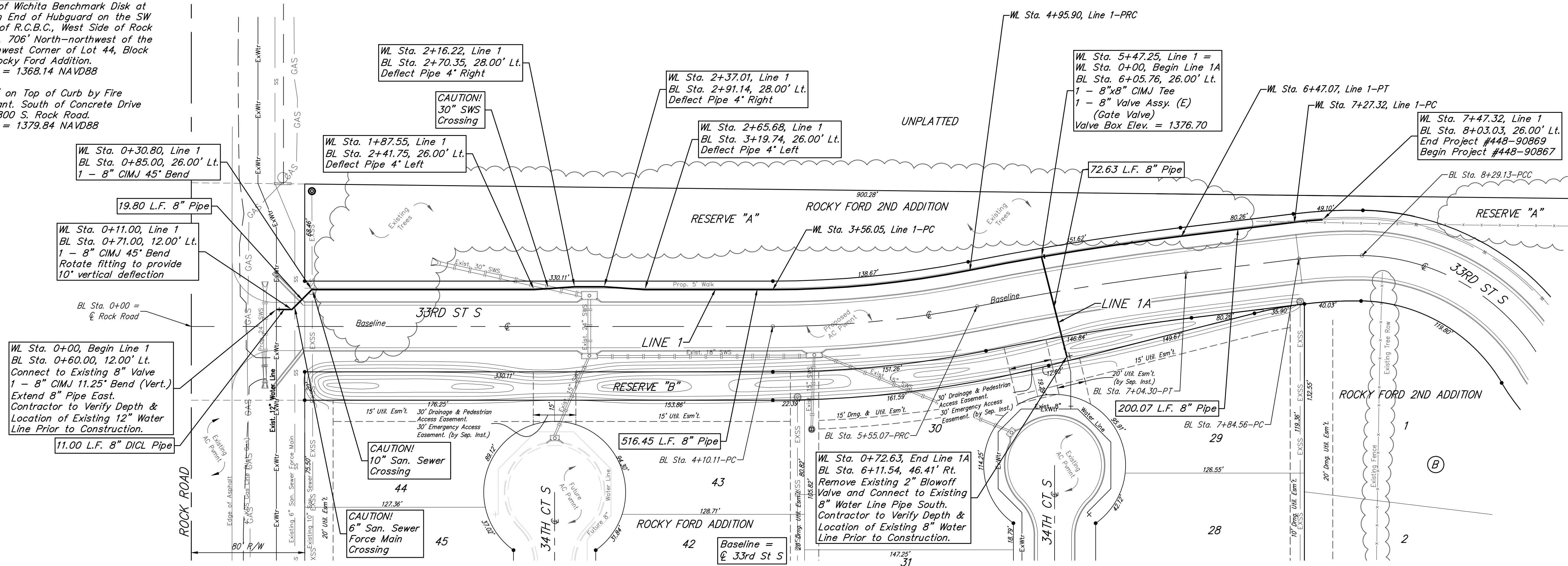


BENCHMARK:
 City of Wichita Benchmark Disk at South End of Hubguard on the SW Cor. of R.C.B.C., West Side of Rock Road, 706' North-northwest of the Northwest Corner of Lot 44, Block A, Rocky Ford Addition.
 Elev. = 1368.14 NAVD88

"□" on Top of Curb by Fire Hydrant. South of Concrete Drive at 2800 S. Rock Road.
 Elev. = 1379.84 NAVD88



Baughman Rocky Ford 2nd Addition
LINE 1 & LINE 1A
 Water Distribution System

Baughman Company, P.A. 315 Ellis St. Wichita, KS 67211 P 316-262-7271 F 316-262-0149
 ENGINEERING | SURVEYING | PLANNING | LANDSCAPE ARCHITECTURE

PROJECT NUMBER: 448-90869
 DESIGN: DMV
 DRAWN: JAK
 APPROVED: [Signature]
 DATE: 3/05/18

REVISIONS:

SCALE: Noted
 SHEET: 4 OF 12

E:\Projects\Rocky Ford 2nd Addition_Engineering\33rd St Wtr_L1-L2-ES95\WTR PLANS.dwg