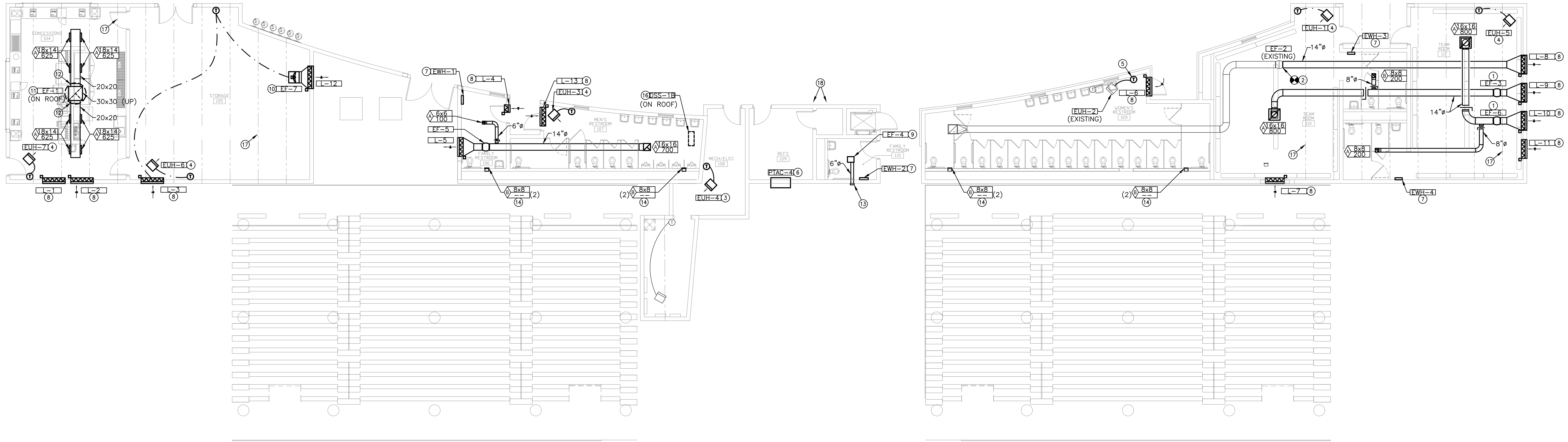
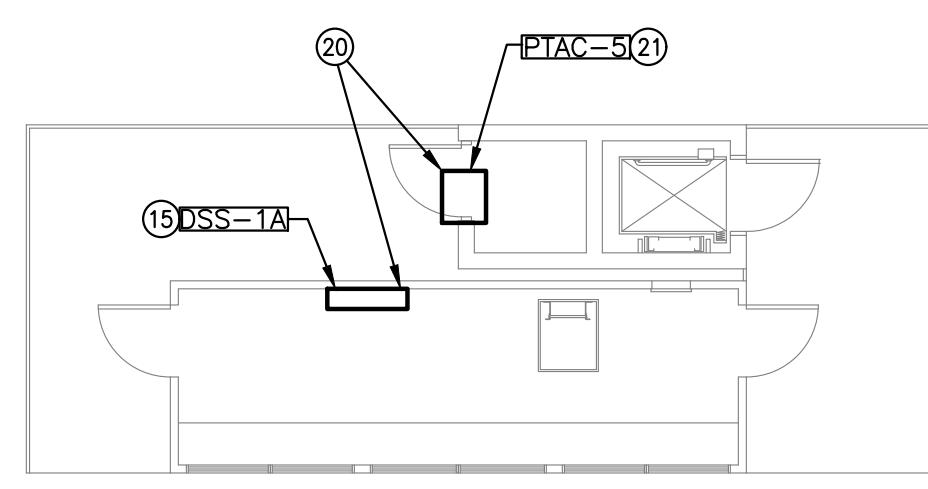


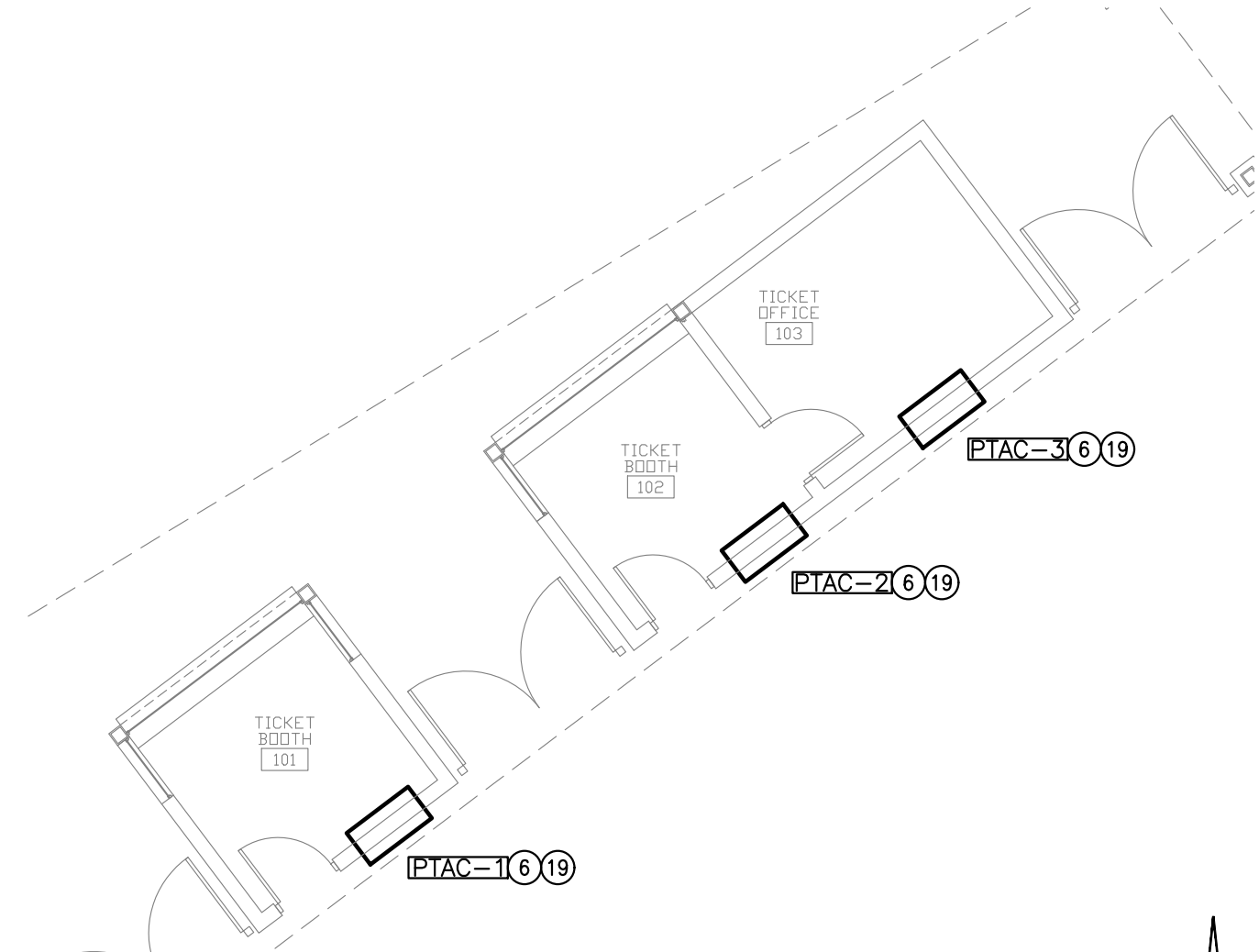
- KEYED NOTES**
1. PROVIDE AND INSTALL INLINE FAN SUPPORT WITH VIBRATION ISOLATION FROM STRUCTURE ABOVE. PROVIDE FLEXIBLE DUCT CONNECTION AT UNIT. COORDINATE WITH E.C. FOR POWER.
  2. CONNECT TO EXISTING.
  3. EXISTING UNIT BELOCATED FROM DEMOLITION PHASE TO CURRENT LOCATION AS SHOWN. SEE DEMOLITION PLANS FOR MORE INFORMATION.
  4. PROVIDE AND INSTALL NEW ELECTRIC UNIT HEATER SUPPORT FROM ADJACENT WALL. COORDINATE WITH E.C. FOR POWER.
  5. COORDINATE NEW LOCATION FOR EXISTING THERMOSTAT.
  6. PROVIDE AND INSTALL PACKAGED TERMINAL UNIT IN WALL. COORDINATE WITH G.C. FOR WALL SLEEVE. COORDINATE WITH E.C. FOR POWER.
  7. PROVIDE AND INSTALL NEW ELECTRIC WALL HEATER. COORDINATE WITH G.C. FOR SURFACE MOUNTING ON BLOCK WALL. COORDINATE WITH E.C. FOR POWER.
  8. PROVIDE AND INSTALL MOTORIZED COMBINATION LOUVER/DAMPER. COORDINATE WITH G.C. FOR BLOCK WALL PENETRATION. INTERLOCK PER SCHEDULE.
  9. PROVIDE AND INSTALL EXHAUST FAN IN NEW CEILING. SUPPORT FROM STRUCTURE ABOVE. EXTEND DISCHARGE DUCT TO EXTERIOR WALL CAP.
  10. PROVIDE AND INSTALL EXHAUST WALL FAN AS SHOWN. PROVIDE DUCT TRANSITION TO LOUVER. SUPPORT FAN WITH VIBRATION ISOLATION FROM STRUCTURE ABOVE. COORDINATE WITH E.C. FOR POWER.
  11. PROVIDE AND INSTALL ROOF MOUNTED DOWN BLAST FAN (EF-1) ON A 14" ROOF CURB. COORDINATE INSTALLATION OF EF-1 WITH ROOF STRUCTURE AND OTHER TRADES IN THIS AREA. ALL PENETRATIONS SHALL BE SEALED WEATHER TIGHT.
  12. PROVIDE AND INSTALL HIGH EFFICIENCY TAKE OFF AT THIS LOCATION.
  13. EXTEND 6" EXHAUST DUCT TO A WALL CAP AT THIS LOCATION. ALL BUILDING PENETRATIONS SHALL BE SEALED WEATHER TIGHT.
  14. PROVIDE AND INSTALL HIGH/LOW VENTS AT THIS LOCATION AS SHOWN. INSTALL LOW VENT 12" ABOVE FINISHED FLOOR. INSTALL HIGH VENT AT 72" ABOVE FINISHED FLOOR.
  15. PROVIDE AND INSTALL DUCTLESS SPLIT SYSTEM INDOOR UNIT (DSS-1A) ON WALL AS SHOWN. MOUNT UNIT AS HIGH AS PRACTICAL. COORDINATE INSTALLATION WITH OTHER TRADES. EXTEND 3/4" COPPER CONDENSATE DRAIN DOWN THROUGH FLOOR TO SPLASH BLOCK AT GRADE UNDER BLEACHERS.
  16. PROVIDE AND INSTALL DUCTLESS SPLIT SYSTEM OUTDOOR UNIT (DSS-1B) ON ROOF AS SHOWN. EXTEND REFRIGERANT PIPING AS NEEDED TO INDOOR UNIT.
  17. STRUCTURAL SHOWN FOR REFERENCE AT THIS LOCATION. SEE STRUCTURAL DOCUMENTS FOR ADDITIONAL COORDINATION INFORMATION.
  18. PRESS BOX ABOVE THIS AREA. SEE PLAN B ON THIS SHEET FOR ADDITIONAL INFORMATION.
  19. EXTEND CONDENSATE DRAIN TO AN AREA DRAIN BELOW UNIT AT EXTERIOR WALL AT THIS LOCATION. COORDINATE FINAL ROUTING WITH ANTICIPATED PUBLIC TRAFFIC THROUGH THIS SPACE AND EXACT LOCATION OF AREA DRAINS ON CIVIL DOCUMENTS.
  20. COORDINATE REFRIGERANT PIPING LENGTHS WITH ACTUAL PIPE ROUTING REQUIREMENTS FOR THIS INSTALLATION PRIOR TO PURCHASE OF EQUIPMENT. SEE PLAN B ON THIS SHEET FOR INDOOR UNIT LOCATION.
  21. PROVIDE AND INSTALL PACKAGED TERMINAL UNIT IN WALL ABOVE DOOR AT THIS LOCATION. COORDINATE WITH G.C. FOR WALL SLEEVE. COORDINATE WITH E.C. FOR POWER.



**A MECHANICAL PLAN**  
SCALE: 1/8" = 1'-0"  
SCALE: 1/8" = 1'-0"



**C MECHANICAL PLAN - PRESS BOX**  
SCALE: 1/8" = 1'-0"  
SCALE: 1/8" = 1'-0"



**B MECHANICAL PLAN - TICKET BOOTH**  
SCALE: 1/8" = 1'-0"  
SCALE: 1/8" = 1'-0"

©2018 MKEC Engineering All Rights Reserved. These drawings and their contents, including, but not limited to, all concepts, designs, & ideas are the exclusive property of MKEC Engineering (MKEC), and may not be used or reproduced in any way without the express consent of MKEC.

**MECHANICAL PLAN**

PROJECT NO.	1701010567	
DATE	03-07-18	
SCALE	AS NOTED	
DESIGNED	DRAWN	CHECKED
RLB	CV	RLB

NO.	REVISION	DATE
1	ISSUE FOR CONSTRUCTION	03-07-18

SHEET NO.  
**SM3.0**