

SYMB.	DESCRIPTION
▽	VOICE/DATA OUTLET: EACH MULTIPLE VOICE/DATA OUTLET LOCATION WILL REQUIRE (1) 4" SQUARE DEEP BOX WITH SINGLE GANG MUD RING AND 1" CONDUIT TO ABOVE ACCESSIBLE FINISHED CEILING WITH INSULATED BUSHING. INSTALL PULL CORD FROM BOX TO ACCESSIBLE CEILING FOR PULLING OF CABLE, CABLING, DEVICES, AND TERMINATION BY OTHERS.
▽	DATA OUTLET: EACH DATA OUTLET LOCATION WILL REQUIRE (1) 4" SQUARE DEEP BOX WITH SINGLE GANG MUD RING AND 1" CONDUIT TO ABOVE ACCESSIBLE FINISHED CEILING WITH INSULATED BUSHING. INSTALL PULL CORD FROM BOX TO ACCESSIBLE CEILING FOR PULLING OF CABLE, CABLING, DEVICES, AND TERMINATION BY OTHERS.
⊕	SPEAKER: PROVIDE AND INSTALL SPEAKER XXXXX PER SPECIFICATIONS FOR ANNOUNCEMENTS AND MASS NOTIFICATION.

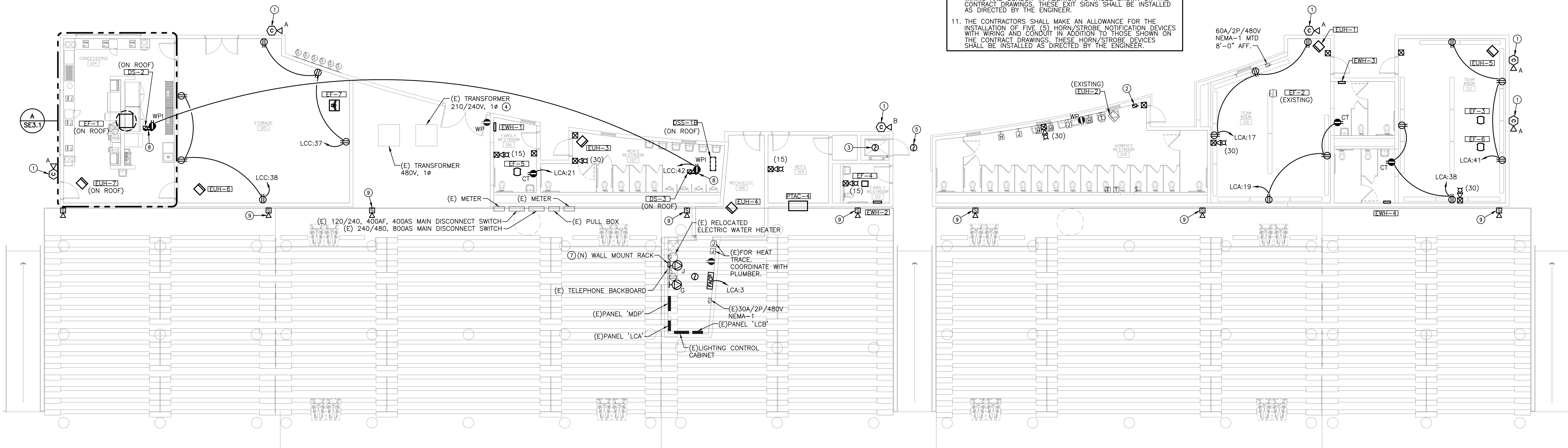
SYMB.	DESCRIPTION
⊕	FIRE ALARM CONTROL PANEL WITH DACT
⊕	FIRE ALARM REMOTE ANNUNCIATOR
⊕	FIRE SMOKE DAMPER
⊕	MANUAL PULL STATION
⊕	PHOTOELECTRIC (P.E.) SMOKE DETECTOR
⊕	STROBE ONLY (CANDELA)
⊕	SPEAKER/STROBE (CANDELA)
⊕	FIRE ALARM SPEAKER
⊕	FIRE ALARM SPEAKER
⊕	SPRINKLER ALARM BELL (FIRE BELL)
⊕	RTU DUCT SMOKE DETECTOR
⊕	REMOTE ALARM/TEST STATION
⊕	FIRE ALARM RELAY

SYMB.	DESCRIPTION
⊕	AXIS P1428-E SECURITY CAMERA: PROVIDE AND INSTALL AXIS CAMERA #P1428-E OR APPROVED EQUAL AT HEIGHT AND LOCATION SHOWN ON PLAN. CONNECT TO PATCH PANEL IN MAIN ELECTRICAL ROOM PER SPECIFICATIONS. AIMING AND VIEW RANGE TO BE SET BY OWNER. SEE SPECIFICATIONS FOR ADDITIONAL INFORMATION AND DETAIL.
⊕	AXIS P1435-LE SECURITY CAMERA: PROVIDE AND INSTALL AXIS CAMERA #P1435-LE OR APPROVED EQUAL AT HEIGHT AND LOCATION SHOWN ON PLAN. CONNECT TO PATCH PANEL IN MAIN ELECTRICAL ROOM PER SPECIFICATIONS. AIMING AND VIEW RANGE TO BE SET BY OWNER. SEE SPECIFICATIONS FOR ADDITIONAL INFORMATION AND DETAIL.
⊕	P1435-LE SECURITY CAMERA: PROVIDE AND INSTALL AXIS INDOOR CAMERA SURFACE MOUNT TO BOTTOM OF STRUCTURE OR CEILING. LOCATION SHOWN ON PLAN. CONNECT TO PATCH PANEL IN MAIN ELECTRICAL ROOM PER SPECIFICATIONS. AIMING AND VIEW RANGE TO BE SET BY OWNER. SEE SPECIFICATIONS FOR ADDITIONAL INFORMATION AND DETAIL.

SYMB.	DESCRIPTION
⊕	GROUND BUS: LISTED TO UL467 1/4"x4"x20" COPPER BUS WITH 88 HOLES WITH BRACKETS -INSULATORS -44 EACH 3/8"-16X1 STAINLESS HEX HEAD CAP SCREWS, LOCK WASHERS AND NUTS. -TUBE OF ANTI-OXIDANT FOR COPPER. KIT HARGER #GB14420MKT
⊕	DATA RACK OUTLET: PROVIDE AND INSTALL HUBBELL L1-30 TWISTLOCK RECEPTACLE #HBL2710. PROVIDE WITH (2)-#10 & (1)-#10 GND. IN 0.75" MOUNT AT RACK AND MAKE FINAL CONNECTION TO RACK OUTLET STRIP AND UPS. COORDINATE RECEPTACLE TYPE WITH SERVER PLUG AND OWNER PRIOR TO PURCHASE.

- ### GENERAL NOTES
- EXISTING CONDITIONS SHOWN ON THE DRAWINGS WERE TAKEN FROM ORIGINAL DOCUMENTS AND FIELD OBSERVATIONS. THIS CONTRACTOR SHALL BE RESPONSIBLE FOR VERIFICATION OF EXISTING CONDITIONS. E.G. SHALL VISIT THE JOBSITE PRIOR TO BID AND VERIFY ALL EXISTING CONDITIONS.
 - REPAIR ALL WALL & FLOOR PENETRATIONS TO MAINTAIN THE REQUIRED FIRE/SMOKE RATING. REFER TO ARCHITECTURAL DRAWINGS FOR FIRE/SMOKE RATINGS AND LOCATIONS.
 - UPON COMPLETION OF PROJECT, E.C. SHALL PROVIDE A FULL TYPED AND UPDATED PANEL DIRECTORY FOR EACH PANELBOARD AFFECTED BY THE SCOPE OF THIS PROJECT.
 - REFER TO ARCHITECTURAL PLANS FOR PROJECT PHASING INFORMATION.
 - REFER TO ARCHITECTURAL INTERIOR ELEVATIONS FOR EXACT MOUNTING HEIGHTS AND LOCATIONS OF ELECTRICAL DEVICES. IF DISCREPANCY OCCURS BETWEEN THE ARCHITECTURAL ELEVATIONS AND THESE DRAWINGS, CONTACT ENGINEER AND ARCHITECT TO CLARIFY PRIOR TO INSTALLATION OF DEVICE.
 - FEEDER ROUTING INDICATED ON THE DRAWINGS DOES NOT INDICATE NEC CODE REQUIRED PULL BOXES. E.C. SHALL BE RESPONSIBLE FOR LOCATING AND INSTALLING REQUIRED PULL BOXES FOR EACH FEEDER.
 - ALL CONDUIT, HANGERS, SUPPORTS, AND ACCESSORIES SHALL BE INSTALLED AS HIGH AS POSSIBLE TO MAINTAIN MAXIMUM CLEARANCE ABOVE THE CEILING.
 - E.C. SHALL COORDINATE WITH ARCHITECT AND G.C. FOR ANY TRENCHING REQUIRED FOR FLOOR OUTLETS AND REPAIR FLOOR AFTER INSTALLATION.
 - THE CONTRACTORS SHALL MAKE AN ALLOWANCE FOR THE INSTALLATION OF FIVE (5) DEDICATED RECEPTACLES WITH 75"-0" OF BRANCH CIRCUIT WIRING AND CONDUIT IN ADDITION TO THOSE SHOWN ON THE CONTRACT DRAWINGS. THESE RECEPTACLES SHALL BE INSTALLED AS DIRECTED BY THE ENGINEER.
 - THE CONTRACTORS SHALL MAKE AN ALLOWANCE FOR THE INSTALLATION OF FIVE (5) EXIT SIGNS WITH BRANCH CIRCUIT WIRING AND CONDUIT IN ADDITION TO THOSE SHOWN ON THE CONTRACT DRAWINGS. THESE EXIT SIGNS SHALL BE INSTALLED AS DIRECTED BY THE ENGINEER.
 - THE CONTRACTORS SHALL MAKE AN ALLOWANCE FOR THE INSTALLATION OF FIVE (5) HORN/STROBE NOTIFICATION DEVICES WITH BRANCH CIRCUIT WIRING AND CONDUIT IN ADDITION TO THOSE SHOWN ON THE CONTRACT DRAWINGS. THESE HORN/STROBE DEVICES SHALL BE INSTALLED AS DIRECTED BY THE ENGINEER.

- ### KEYED NOTES
- MOUNT CAMERA TO EXTERIOR WALL 15'-0" ABOVE FINISHED GRADE. COORDINATE VIEW ANGLE OF CAMERA WITH OWNER.
 - RELOCATED EXISTING DISCONNECT SWITCH.
 - MOUNT SMOKE DETECTOR IN THE BOTTOM OF ELEVATOR SHAFT FOR ELEVATOR RECALL.
 - EXISTING TRANSFORMER WILL BE REPLACED BY WESTAR. EC SHALL COORDINATE WITH WESTAR FOR REMOVAL OF TRANSFORMER. PROVIDE AND INSTALL NEW PAD AND REWORK SECONDARY CONDUIT AS REQUIRED TO ROUTE INTO NEW TRANSFORMER. SEE DETAIL 3/355.0 FOR PAD INFORMATION. SEE ONE-LINE DIAGRAM FOR ADDITIONAL WORK.
 - MOUNT SMOKE DETECTOR WITHIN 5'-0" FROM ELEVATOR FOR ELEVATOR RECALL.
 - STUB UP CONDUITS FROM PANEL 'LCC' AS REQUIRED TO SERVE LOADS FOR TICKET BOOTH.
 - PROVIDE AND INSTALL WALL MOUNT RACK PER SPECIFICATIONS.
 - PROVIDE WEATHERPROOF STRUT STAND ON ROOF TO MOUNT DISCONNECT AND WEATHERPROOF RECEPTACLE.
 - MOUNT FIRE ALARM SPEAKER ON BLEACHERS, 20'-6" ABOVE FINISHED GRADE.



A POWER/SYSTEMS PLAN
SCALE: 1/8" = 1'-0"
SCALE: 1/8"=1'-0"



B POWER/SYSTEMS PLAN - TICKET BOOTH
SCALE: 1/8" = 1'-0"
SCALE: 1/8"=1'-0"

©2018 MKEC Engineering All Rights Reserved www.mkec.com These drawings and their contents, including, but not limited to, all concepts, designs, & data are the exclusive property of MKEC Engineering (MKEC), and may not be used or reproduced in any way without the express consent of MKEC.

POWER/SYSTEMS PLAN

PROJECT NO.	1701010567	
DATE	03-07-18	
SCALE	AS NOTED	
DESIGNED	DRAWN	CHECKED
CNG	CV	JRBW

NO.	REVISION	DATE

SHEET NO. SE3.0