

**GENERAL NOTES**

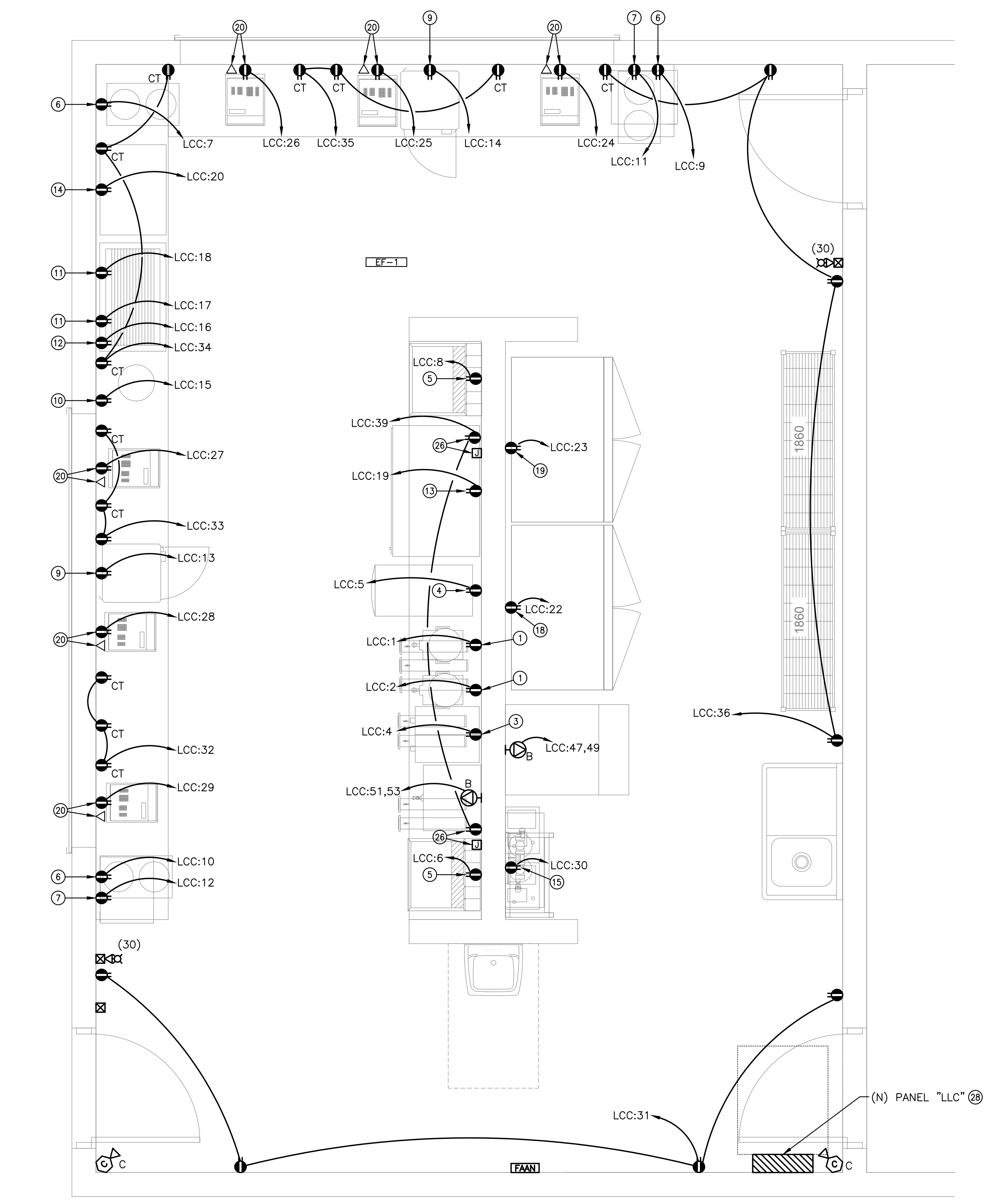
- EXISTING CONDITIONS SHOWN ON THE DRAWINGS WERE TAKEN FROM ORIGINAL DOCUMENTS AND FIELD OBSERVATIONS. THIS CONTRACTOR SHALL BE RESPONSIBLE FOR VERIFICATION OF EXISTING CONDITIONS. E.C. SHALL VISIT THE JOBSITE PRIOR TO BID AND VERIFY ALL EXISTING CONDITIONS.
- REPAIR ALL WALL & FLOOR PENETRATIONS TO MAINTAIN THE REQUIRED FIRE/SMOKE RATINGS. REFER TO ARCHITECTURAL DRAWINGS FOR FIRE/SMOKE RATINGS AND LOCATIONS.
- UPON COMPLETION OF PROJECT, E.C. SHALL PROVIDE A FULL TYPED AND UPDATED PANEL DIRECTORY FOR EACH PANELBOARD AFFECTED BY THE SCOPE OF THIS PROJECT.
- REFER TO PROJECT MANUAL FOR PROJECT PHASING INFORMATION.
- REFER TO ARCHITECTURAL INTERIOR ELEVATIONS FOR EXACT MOUNTING HEIGHTS AND LOCATIONS OF ELECTRICAL DEVICES. IF DISCREPANCY OCCURS BETWEEN THE ARCHITECTURAL ELEVATIONS AND THESE DRAWINGS, CONTACT ENGINEER AND ARCHITECT TO CLARIFY PRIOR TO INSTALLATION OF DEVICE.
- FEEDER ROUTING INDICATED ON THE DRAWINGS DOES NOT INDICATE NEC CODE REQUIRED PULL BOXES. E.C. SHALL BE RESPONSIBLE FOR LOCATING AND INSTALLING REQUIRED PULL BOXES FOR EACH FEEDER.
- ALL CONDUIT, HANGERS, SUPPORTS, AND ACCESSORIES SHALL BE INSTALLED AS HIGH AS POSSIBLE TO MAINTAIN MAXIMUM CLEARANCE ABOVE THE CEILING.
- E.C. SHALL COORDINATE WITH ARCHITECT AND G.C. FOR ANY TRENCHING REQUIRED FOR FLOOR OUTLETS AND REPAIR FLOOR AFTER INSTALLATION.
- THE CONTRACTORS SHALL MAKE AN ALLOWANCE FOR THE INSTALLATION OF TWO (2) DEDICATED RECEPTACLES WITH 75'-0" OF BRANCH CIRCUIT WIRING AND CONDUIT IN ADDITION TO THOSE SHOWN ON THE CONTRACT DRAWINGS. THESE RECEPTACLES SHALL BE INSTALLED AS DIRECTED BY THE ENGINEER.
- THE CONTRACTORS SHALL MAKE AN ALLOWANCE FOR THE INSTALLATION OF ONE (1) EXIT SIGN WITH BRANCH CIRCUIT WIRING AND CONDUIT IN ADDITION TO THOSE SHOWN ON THE CONTRACT DRAWINGS. THIS EXIT SIGN SHALL BE INSTALLED AS DIRECTED BY THE ENGINEER.
- THE CONTRACTORS SHALL MAKE AN ALLOWANCE FOR THE INSTALLATION OF ONE (1) HORN/STROBE NOTIFICATION DEVICE WITH WIRING AND CONDUIT IN ADDITION TO THOSE SHOWN ON THE CONTRACT DRAWINGS. THIS HORN/STROBE DEVICE SHALL BE INSTALLED AS DIRECTED BY THE ENGINEER.

**KEYED NOTES**

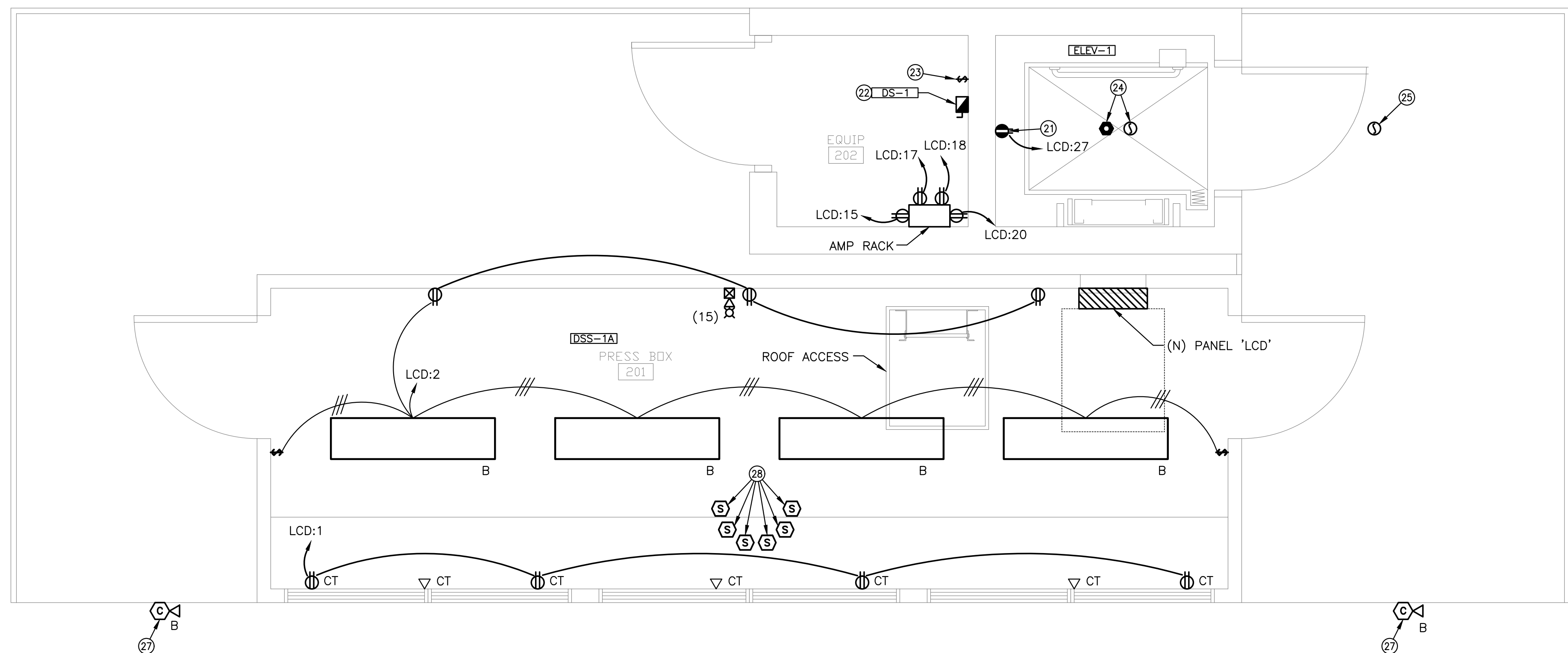
- PROVIDE AND INSTALL NEMA 5-15P RECEPTACLE FOR BLENDER. COORDINATE FINAL LOCATION AND HEIGHT WITH KITCHEN SUPPLIER.
- NOT USED.
- PROVIDE AND INSTALL NEMA 5-15P RECEPTACLE FOR TEA BREWER & DISPENSER. COORDINATE FINAL LOCATION AND HEIGHT WITH KITCHEN SUPPLIER.
- PROVIDE AND INSTALL DEDICATED RECEPTACLE FOR FROZEN BEVERAGE MACHINE. COORDINATE FINAL LOCATION AND HEIGHT WITH KITCHEN SUPPLIER.
- PROVIDE AND INSTALL NEMA 5-15P RECEPTACLE FOR SODA DISPENSER PROVIDED BY SODA VENDOR. COORDINATE FINAL LOCATION AND HEIGHT WITH KITCHEN SUPPLIER.
- PROVIDE AND INSTALL NEMA 5-15P RECEPTACLE FOR HOT FOOD WELL. COORDINATE FINAL LOCATION AND HEIGHT WITH KITCHEN SUPPLIER.
- PROVIDE AND INSTALL NEMA 5-15P RECEPTACLE FOR MICROWAVE. COORDINATE FINAL LOCATION AND HEIGHT WITH KITCHEN SUPPLIER.
- NOT USED.
- PROVIDE AND INSTALL NEMA 5-20P RECEPTACLE FOR HOT FOOD MERCHANDISER. COORDINATE FINAL LOCATION AND HEIGHT WITH KITCHEN SUPPLIER.
- PROVIDE AND INSTALL NEMA 5-15P RECEPTACLE FOR CHEESE WARMER. COORDINATE FINAL LOCATION AND HEIGHT WITH KITCHEN SUPPLIER.
- PROVIDE AND INSTALL NEMA 5-15P RECEPTACLE FOR HOT DOG GRILL. COORDINATE FINAL LOCATION AND HEIGHT WITH KITCHEN SUPPLIER.
- PROVIDE AND INSTALL NEMA 5-15P RECEPTACLE FOR BUN WARMER. COORDINATE FINAL LOCATION AND HEIGHT WITH KITCHEN SUPPLIER.
- PROVIDE AND INSTALL NEMA 5-15P RECEPTACLE FOR REFRIGERATOR, MERCHANDISER. COORDINATE FINAL LOCATION AND HEIGHT WITH KITCHEN SUPPLIER.
- PROVIDE AND INSTALL NEMA 5-20P RECEPTACLE FOR POPCORN MACHINE. COORDINATE FINAL LOCATION AND HEIGHT WITH KITCHEN SUPPLIER.
- PROVIDE AND INSTALL DEDICATED RECEPTACLE FOR SODA RACK AND PUMPS. COORDINATE FINAL LOCATION AND HEIGHT WITH KITCHEN SUPPLIER.
- PROVIDE AND INSTALL DEDICATED RECEPTACLE FOR DISPLAY WARMER. COORDINATE FINAL LOCATION AND HEIGHT WITH KITCHEN SUPPLIER.
- NOT USED.
- PROVIDE AND INSTALL NEMA 5-15P RECEPTACLE FOR REACH-IN REFRIGERATOR. COORDINATE FINAL LOCATION AND HEIGHT WITH KITCHEN SUPPLIER.
- PROVIDE AND INSTALL NEMA 5-15P RECEPTACLE FOR REACH-IN FREEZER. COORDINATE FINAL LOCATION AND HEIGHT WITH KITCHEN SUPPLIER.
- PROVIDE AND INSTALL DEDICATED RECEPTACLE AND DATA DROP FOR POS. COORDINATE FINAL LOCATION AND HEIGHT WITH KITCHEN SUPPLIER.
- PROVIDE AND INSTALL RECEPTACLE INSIDE ELEVATOR PIT FOR MAINTENANCE.
- PROVIDE AND INSTALL ELEVATOR SHUNT TRIP DISCONNECT. COORDINATE SIZE WITH ELEVATOR MANUFACTURER FOR ELEVATOR PROVIDED.
- PROVIDE AND INSTALL SWITCH WITH LOCK IN OFF POSITION FOR ELEVATOR CAB LIGHTS AND EXHAUST FAN. COORDINATE LOCATION WITH ELEVATOR INSTALLER.
- PROVIDE AND INSTALL SMOKE DETECTOR AND HEAT DETECTOR IN TOP OF ELEVATOR SHAFT.
- PROVIDE SMOKE DETECTOR FOR ELEVATOR RECALL.
- PROVIDE AND INSTALL DEDICATED RECEPTACLE 72" AFF FOR MENU BOARD. PROVIDE 4" SQUARE BOX AT 72" AFF. FOR LOW VOLTAGE CABLING. ROUTE 1.25" FROM BOX TO ABOVE ACCESSIBLE CEILING TURN UP AND ROUTE TO CONCESSIONS MANAGER OFFICE. STUB CONDUIT AT END.
- MOUNT CAMERA TO EXTERIOR WALL OF PRESSBOX 25'-0" ABOVE FINISHED GRADE. COORDINATE VIEW ANGLE OF CAMERA WITH OWNER.
- ROUTE CONDUIT UNDERGROUND TO TICKET BOOTH TO SERVE LOADS IN TICKET BOOTH.
- MOUNT SPEAKER ON TOP OF PRESSBOX PER SPECIFICATIONS.
- PROVIDE AND INSTALL AMP RACK PER SPECIFICATIONS.

**SPECIAL OUTLET SCHEDULE**

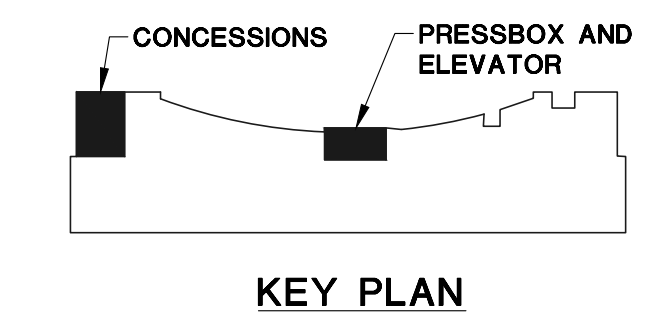
SYMB.	DESCRIPTION
ⓐ	COFFEE BREWER RECEPTACLE: PROVIDE AND INSTALL A 208V, 10, 30A TWISTLOCK RECEPTACLE FOR COFFEE BREWER. ROUTE CIRCUIT WITH (3)-#8 & (1)-#10 GND. IN 0.75" C. COORDINATE RECEPTACLE TYPE WITH PLUG ON COFFEE BREWER AND OWNER PRIOR TO PURCHASE. COORDINATE MOUNTING HEIGHT AND LOCATION WITH OWNER.
ⓑ	ICE FLAKER RECEPTACLE: PROVIDE AND INSTALL A 208V, 10, 20A TWISTLOCK RECEPTACLE FOR ICE FLAKER. ROUTE CIRCUIT WITH (3)-#12 & (1)-#12 GND. IN 0.75" C. COORDINATE RECEPTACLE TYPE WITH PLUG ON ICE FLAKER AND OWNER PRIOR TO PURCHASE. COORDINATE MOUNTING HEIGHT AND LOCATION WITH OWNER.



**ENLARGE POWER/SYSTEMS PLAN**  
SCALE: 1/2" = 1'-0"  
SCALE: 1/2" = 1'-0"



**PRESSBOX POWER/SYSTEMS/LIGHTING PLAN**  
SCALE: 1/2" = 1'-0"  
SCALE: 1/2" = 1'-0"



KEY PLAN

©2018 MKEC Engineering All Rights Reserved. These drawings and their contents, including, but not limited to, all concepts, designs, & data are the exclusive property of MKEC Engineering (MKEC), and may not be used or reproduced in any way without the express consent of MKEC.

**ENLARGED POWER/SYSTEMS/LIGHTING PLAN**

PROJECT NO.	1701010567	
DATE	03-07-18	
SCALE	AS NOTED	
DESIGNED	DRAWN	CHECKED
CNG	CV	JRBW

NO.	REVISION	DATE
0	ISSUE FOR CONSTRUCTION	03-07-18

SHEET NO. SE3.1