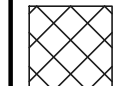
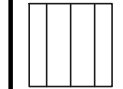


### HATCH LEGEND

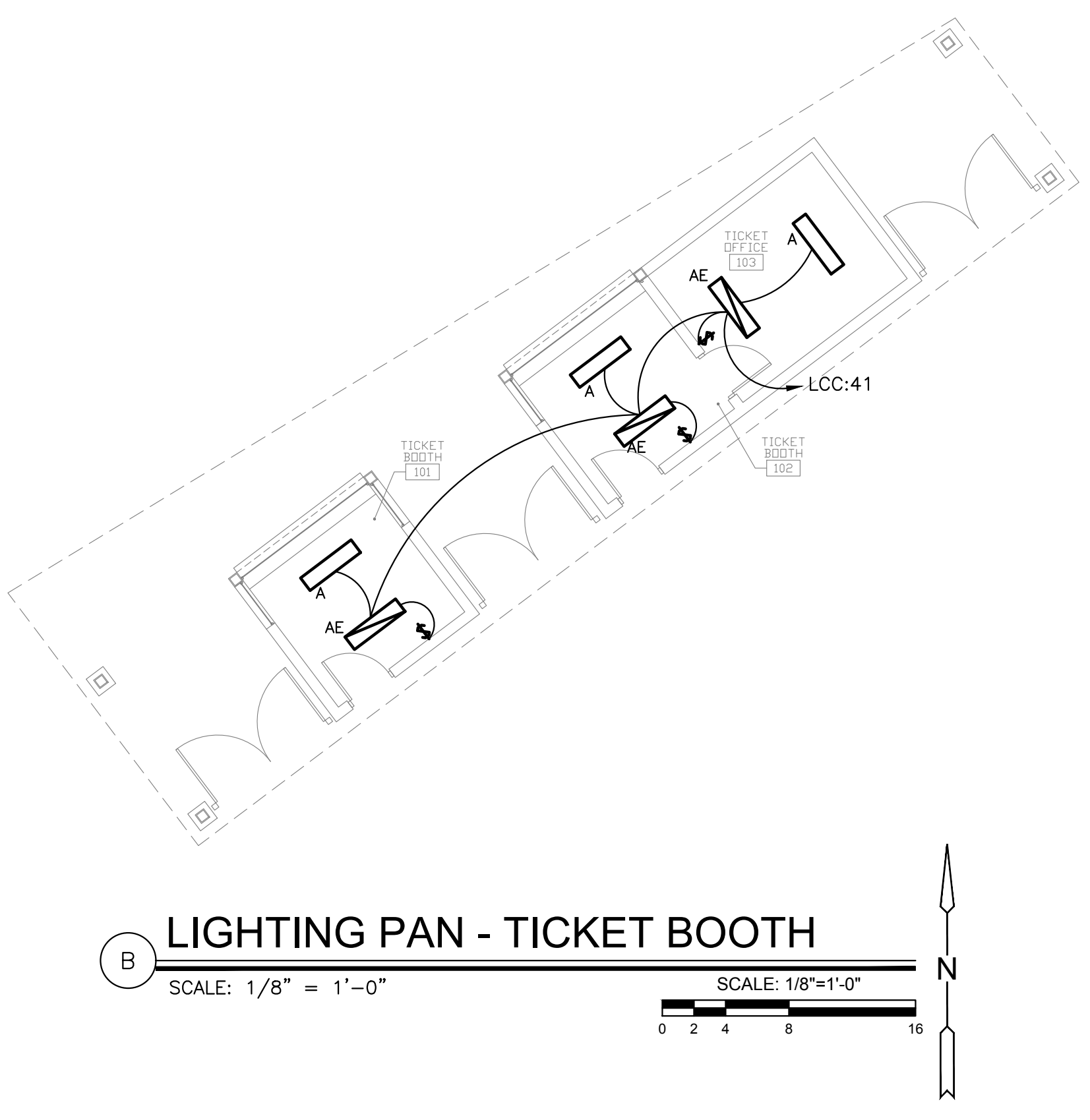
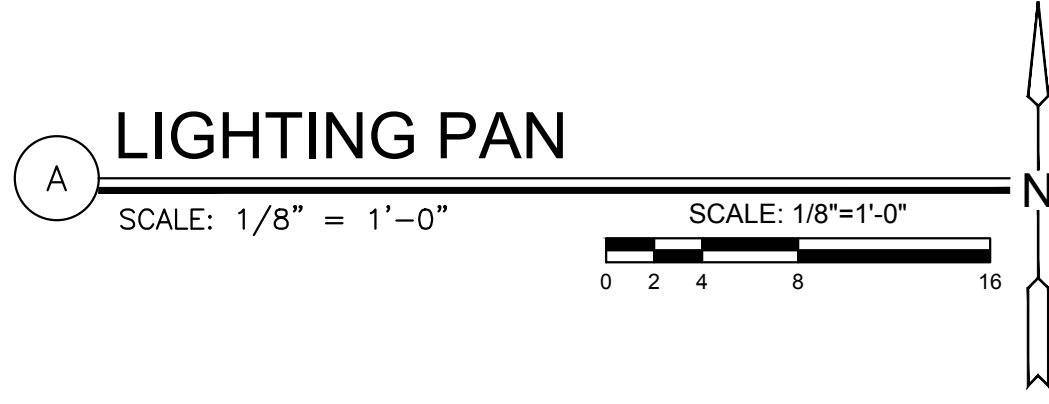
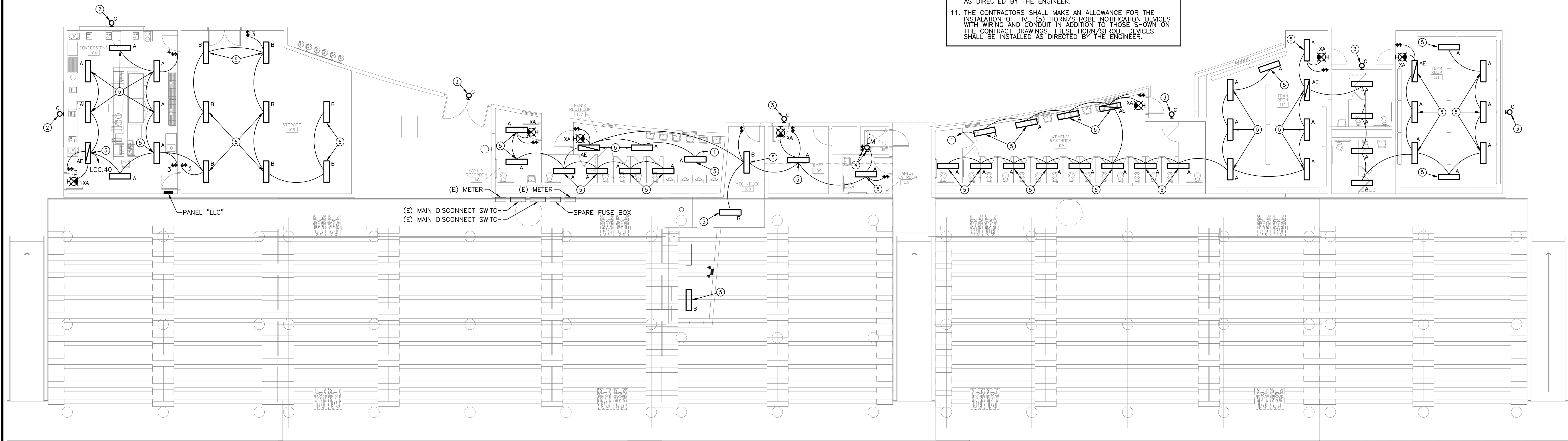
-  E.C. SHALL REMOVE ANY EXISTING ELECTRICAL DEVICES IN WALLS BEING DEMOLISHED OR DEVICES SURFACE MOUNTED ON WALLS. EXISTING DEVICES SHALL BE DE-ENERGIZED AND PREPARED FOR REMOVAL. REMOVE ALL CONDUCTORS BACK TO SOURCE OR NEAREST JUNCTION BOX. REMOVE ALL ACCESSIBLE RACEWAY. COORDINATE DEMOLITION WORK WITH G.C.
-  IN EXISTING CEILINGS AND WALL BEING DEMOLISHED, E.C. SHALL REMOVE EXISTING LIGHTING FIXTURES AND ASSOCIATED SWITCHES. RETAIN EXISTING CIRCUIT FOR CONNECTION TO NEW FIXTURES. SEE IMPROVEMENT LIGHTING PLAN FOR MORE INFORMATION. COORDINATE DEMOLITION WORK WITH G.C.

### GENERAL NOTES

1. EXISTING CONDITIONS SHOWN ON THE DRAWINGS WERE TAKEN FROM ORIGINAL DOCUMENTS AND FIELD OBSERVATIONS. THIS CONTRACTOR SHALL BE RESPONSIBLE FOR VERIFICATION OF EXISTING CONDITIONS. E.C. SHALL VISIT THE JOBSITE PRIOR TO BID AND VERIFY ALL EXISTING CONDITIONS.
2. REPAIR ALL WALL & FLOOR PENETRATIONS TO MAINTAIN THE REQUIRED FIRE/SMOKE RATINGS. REFER TO ARCHITECTURAL DRAWINGS FOR FIRE/SMOKE RATINGS AND LOCATIONS.
3. UPON COMPLETION OF PROJECT, E.C. SHALL PROVIDE A FULL TYPED AND UPDATED PANEL DIRECTORY FOR EACH PANEBOARD AFFECTED BY THE SCOPE OF THIS PROJECT.
4. REFER TO ARCHITECTURAL PANS FOR PROJECT PHASING INFORMATION.
5. REFER TO ARCHITECTURAL INTERIOR ELEVATIONS FOR EXACT MOUNTING HEIGHTS AND LOCATIONS OF ELECTRICAL DEVICES. IF DISCREPANCY OCCURS BETWEEN THE ARCHITECTURAL ELEVATIONS AND THESE DRAWINGS, CONTACT ENGINEER AND ARCHITECT TO CLARIFY PRIOR TO INSTALLATION OF DEVICE.
6. FEEDER ROUTING INDICATED ON THE DRAWINGS DOES NOT INDICATE NEC CODE REQUIRED PULL BOXES. E.C. SHALL BE RESPONSIBLE FOR LOCATING AND INSTALLING REQUIRED PULL BOXES FOR EACH FEEDER.
7. ALL CONDUIT, HANGERS, SUPPORTS, AND ACCESSORIES SHALL BE INSTALLED AS HIGH AS POSSIBLE TO MAINTAIN MAXIMUM CLEARANCE ABOVE THE CEILING.
8. E.C. SHALL COORDINATE WITH ARCHITECT AND G.C. FOR ANY TRENCHING REQUIRED FOR FLOOR OUTLETS AND REPAIR FLOOR AFTER INSTALLATION.
9. THE CONTRACTORS SHALL MAKE AN ALLOWANCE FOR THE INSTALLATION OF FIVE (5) DEDICATED RECEPTACLES WITH 75'-0" OF BRANCH CIRCUIT WIRING AND CONDUIT IN ADDITION TO THOSE SHOWN ON THE CONTRACT DRAWINGS. THESE RECEPTACLES SHALL BE INSTALLED AS DIRECTED BY THE ENGINEER.
10. THE CONTRACTORS SHALL MAKE AN ALLOWANCE FOR THE INSTALLATION OF FIVE (5) EXIT SIGNS WITH BRANCH CIRCUIT WIRING AND CONDUIT IN ADDITION TO THOSE SHOWN ON THE CONTRACT DRAWINGS. THESE EXIT SIGNS SHALL BE INSTALLED AS DIRECTED BY THE ENGINEER.
11. THE CONTRACTORS SHALL MAKE AN ALLOWANCE FOR THE INSTALLATION OF FIVE (5) HORN/STROBE NOTIFICATION DEVICES WITH WIRING AND CONDUIT IN ADDITION TO THOSE SHOWN ON THE CONTRACT DRAWINGS. THESE HORN/STROBE DEVICES SHALL BE INSTALLED AS DIRECTED BY THE ENGINEER.

### KEYED NOTES

1. CONNECT TO EXISTING 120V CIRCUIT SERVING LIGHTING PREVIOUSLY REMOVED.
2. MOUNT FIXTURE 6" ABOVE WINDOW.
3. MOUNT FIXTURE 10'-0" ABOVE FINISHED GRADE.
4. WALL MOUNT FIXTURE IN ELEVATOR PIT NEXT TO LADDER. MOUNT SWITCH AT TOP OF LADDER.
5. SUSPEND FIXTURE 9'-0" AFF.



### LIGHTING PLAN

PROJECT NO.	1701010567
DATE	03-07-18
SCALE	AS NOTED
DESIGNED	CNG
DRAWN	CV
CHECKED	JRBW

NO.	REVISION	DATE

J:\PROJECTS\2017\1701010567\_COW\_STRYKER\_17067\_CASHIERS\01\_BLDG\_MEP\STADIUM\_PACKAGE\ELEC\SE4.0\_LIGHTING\_PLAN.DWG  
 PLOTTED: Wednesday, March 27, 2018 @ 10:30 AM