

J:\PROJECTS\2017\0701010047_LK_WATERFRONT 6TH RETAIL EXPANSION_L7047 CAD\BIBS\DWG\CIVIL\SW\7047 SWS TITLE.DWG
 PLOTTED: Friday, March 24, 2017 @ 08:34AM

PRIVATE STORM WATER SEWER
TO SERVE

WATERFRONT 6TH ADDITION

10250 E. 13TH STREET N.
WICHITA, KS 67206

THE CITY OF WICHITA, KANSAS
GARY JANZEN, P.E. - CITY ENGINEER

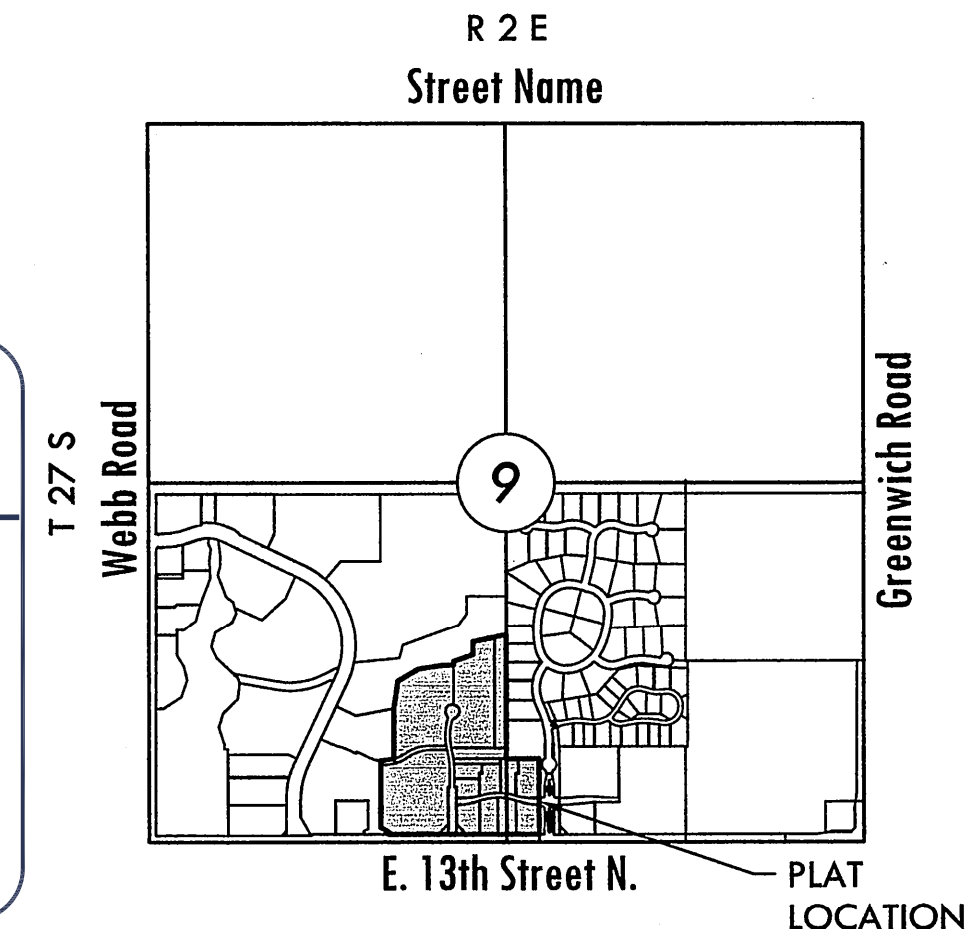
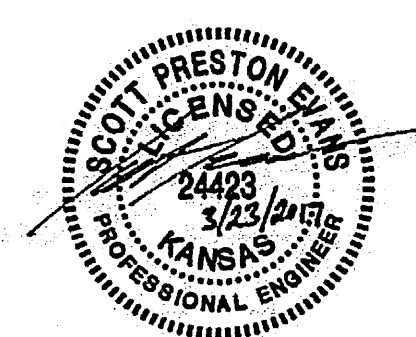
PROJECT NO.
0450PPD (133119)

AS BUILTS

Contractor: Wilks Underground
Inspector: Matt Perez
Date: 6-16-2017

KEMILLER
ENGINEERING PA

117 E. Lewis,
Wichita, KS 67202 (316)264-0242



VICINITY MAP

No Scale

INDEX TO DRAWINGS

SHEET NO.	DESCRIPTION
1	TITLE SHEET
2	SWS LINE 1
3	SWS LINE 2
4-5	STORM WATER DETAILS
6	FINAL PLAT

SEE GENERAL NOTE #13 FOR CITY OF WICHITA STANDARD BMP LINK

Stormwater Certification:
New Development

These construction plans were prepared in accordance with the current Stormwater Management Regulations as set forth in the City of Wichita's Stormwater Management Ordinance 16.32 and the policies/guidelines presented in the Wichita/Sedgwick/County Stormwater Manual.

Disturbed Area=1.83 AC
Water Quality Treatment: 0.16 AC-FT***
Downstream Channel Protection: N/A
Detention: N/A - Provided for by Beach Lake
The BMP used for this development is Beach Lake, a common detention pond.

***Water Quality is being provided by Beach Lake, an existing detention pond.

APPROVED AS NOTED
BY WICHITA PUBLIC WORKS ENGINEERING AND STORMWATER DIVISION

Engineering
Storm Water

Robert J. ... 3/27/17
Joe Heiche PE 3/27/17

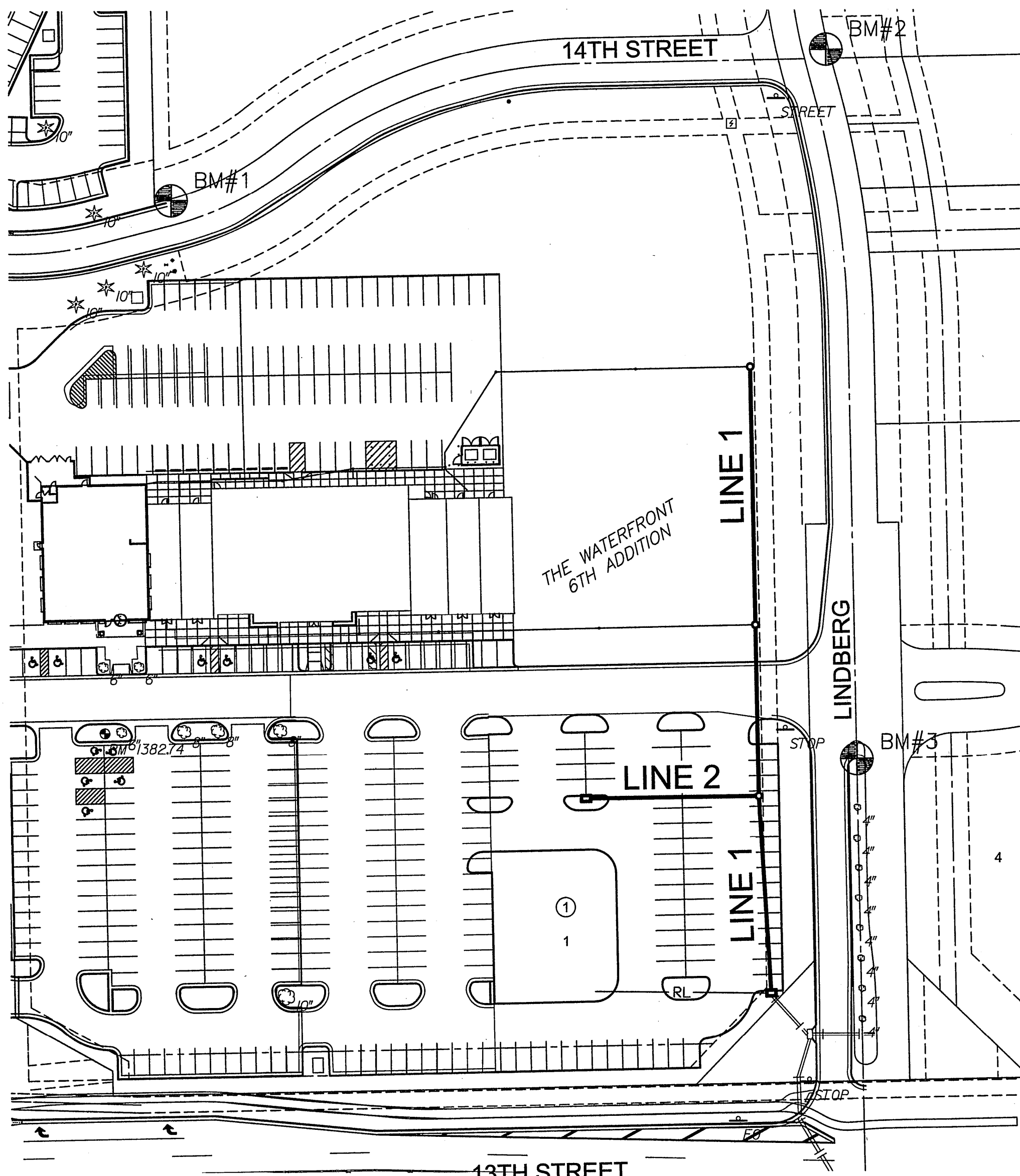
NOTE TO CONTRACTORS

Inspection and testing for this project is to be provided by a Licensed Consulting Engineering Firm under contract with the Owner/Developer. Said inspection to be in accordance with the City of Wichita standard construction engineering practices and certified by a Licensed Professional Engineer in the state of Kansas. No work shall be performed by the Contractor without such inspection, nor shall any work be commenced without written authorization by the City Engineer. All Construction and Materials shall comply with the current City of Wichita Specifications and Standards and Special Provisions. (on file and available at Wichita.gov).

An approved copy of these plans signed by City staff are required on-site.

GENERAL NOTES

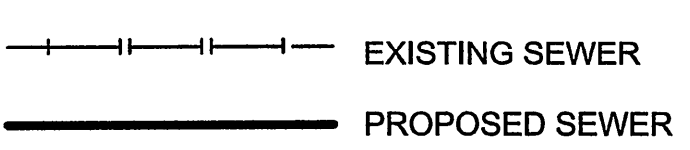
- THE CONTRACTOR SHALL COMPLY WITH ALL APPLICABLE SAFETY REGULATIONS. ALL CONSTRUCTION SHALL BE COMPLETED FOLLOWING CURRENT CITY STANDARD SPECIFICATIONS AND SPECIAL PROVISIONS.
- CONTRACTOR WILL BE REQUIRED TO PROVIDE NOTICE TO UTILITY COMPANIES A MINIMUM OF SEVENTY-TWO (72) HOURS PRIOR TO ANY EXCAVATION, AS FOLLOWS:
KANSAS ONE-CALL 687-2470
THE CONTRACTOR MUST NOTIFY THE FOLLOWING IN CASE OF AN EMERGENCY:
AT&T 1-800-246-8464
BLACK HILLS ENERGY (GAS) 1-800-694-8989
CITY OF WICHITA WATER & SEWER 1-316-219-8921
CITY OF WICHITA STORMWATER 1-316-268-4080
CITY OF WICHITA TRAFFIC 1-316-268-4034
COX COMMUNICATIONS 1-888-249-3530
KANSAS GAS SERVICE 1-888-482-4950
WESTAR ENERGY 1-800-544-4857
- UTILITY SERVICE LINES, POLES, ETC. ARE TO BE ADJUSTED AS NECESSARY BY OTHERS PRIOR TO CONSTRUCTION UNLESS THE PLANS SPECIFICALLY CALL FOR THEIR ADJUSTMENT BY THE CONTRACTOR OR UNLESS THE PLANS SPECIFICALLY IDENTIFY A UTILITY TO BE ADJUSTED BY ITS OWNER DURING CONSTRUCTION. EXISTING UTILITIES AND THEIR LOCATION, AS SHOWN ON THE PLANS, REPRESENT THE BEST INFORMATION OBTAINABLE FOR DESIGN. THE CONTRACTOR WILL BE REQUIRED TO WORK AROUND EXISTING UTILITIES WITHIN THE RIGHT-OF-WAY WHICH DO NOT CONFLICT WITH PROPOSED CONSTRUCTION.
- RUBBLE FROM THE REMOVAL OF MISCELLANEOUS STRUCTURES AND EXCESS EXCAVATION WHICH IS TO BE WASTED SHALL BE DISPOSED OF ON SITES TO BE PROVIDED BY THE CONTRACTOR. THESE SITES SHALL BE APPROVED BY THE ENGINEER AS TO SUITABILITY, APPEARANCE AND SITE LOCATION. LOCATIONS, IN THE OPINION OF THE ENGINEER, THAT WILL LEAVE AN UNSIGHTLY APPEARANCE WILL NOT BE APPROVED. ALL DISPOSAL SITES MUST BE APPROVED BY THE KANSAS DEPARTMENT OF HEALTH AND ENVIRONMENT. MATERIAL EITHER STOCKPILED OR DISPOSED OF IN A FLOOD PLAIN WILL REQUIRE A KANSAS STATE BOARD OF AGRICULTURE PERMIT. ANY MATERIAL DUMPED IN WATERS OF THE UNITED STATES OR WETLANDS IS SUBJECT TO U.S. CORPS OF ENGINEERS PERMITTING REGULATIONS. ANY MATERIAL BURIED OR STOCKPILED BEYOND APPROVED CONSTRUCTION LIMITS WILL REQUIRE ADDITIONAL ARCHAEOLOGICAL INVESTIGATIONS UNLESS BURIED IN A PREVIOUSLY APPROVED BORROW LOCATION.
- TREES AND SHRUBS IN PUBLIC RIGHT-OF-WAY WHICH ARE IN DIRECT CONFLICT WITH PROPOSED NEW CONSTRUCTION SHALL BE REMOVED BY THE CONTRACTOR WITH THE CITY ENGINEER'S APPROVAL. TREES AND SHRUBS WHICH ARE NOT IN DIRECT CONFLICT WITH PROPOSED NEW CONSTRUCTION SHALL BE SAVED AND PROTECTED FROM DAMAGE.
- THE CONTRACTOR SHALL GIVE ALL PROPERTY OWNERS AND/OR TENANTS OF DEVELOPED PROPERTY ABUTTING THE CONSTRUCTION OF THIS PROJECT A MINIMUM OF TEN (10) DAYS NOTICE PRIOR TO START OF CONSTRUCTION.
- THE CONTRACTOR SHALL BE RESPONSIBLE FOR PRESERVING PROPERTY IRONS. THE CONTRACTOR WILL BE REQUIRED TO RE-ESTABLISH ANY PROPERTY IRONS WHICH ARE DAMAGED OR DESTROYED BY HIS CONSTRUCTION OPERATIONS. SUCH IRONS SHALL BE RE-ESTABLISHED BY A LICENSED LAND SURVEYOR IN ACCORDANCE WITH STATE LAWS.
- THE ENGINEERING DIVISION SHALL FIELD LOCATE WATER VALVES ONE TIME DURING CONSTRUCTION WHEN REQUESTED BY THE CONTRACTOR. IT SHALL BE THE CONTRACTOR'S RESPONSIBILITY TO PRESERVE SUCH FIELD LOCATIONS DURING THE CONSTRUCTION PROCESS. WATER VALVES, VALVE BOXES OR FIRE HYDRANTS DAMAGED DURING CONSTRUCTION SHALL BE REPAIRED BY CONTRACTOR AT HIS OWN EXPENSE. VALVE BOXES AND WATER METERS WITHIN THE PROJECT LIMITS SHALL BE ADJUSTED TO MATCH FIELD GRADES BY THE CONTRACTOR.
- THE CONTRACTOR SHALL NOTIFY THE CONSULTANT ENGINEER AND TOM MASON AT 316-268-4574 WITH THE CITY OF WICHITA WITH THE ANTICIPATED CONSTRUCTION START DATE AND NOTIFY THEM OF PROJECT COMPLETION. STAKING AND INSPECTION FOR THIS PROJECT WILL BE THE RESPONSIBILITY OF THE CONTRACTOR.
- IF TRAFFIC WILL BE IMPACTED BY CONSTRUCTION, A TRAFFIC CONTROL PLAN MUST BE SUBMITTED AND APPROVED BY THE CITY TRAFFIC ENGINEER, BRIAN COON AT traffic@wichita.gov BEFORE CONSTRUCTION CAN BEGIN. THE CONTRACTOR SHALL BE RESPONSIBLE FOR ALL TRAFFIC CONTROL MEASURES TO FACILITATE CONSTRUCTION. ALL CONSTRUCTION ZONE MARKINGS AND SIGNAGE SHALL CONFORM TO THE LATEST VERSION OF THE MANUAL ON UNIFORM TRAFFIC CONTROL DEVICES (MUTCD) AS PUBLISHED BY THE US DEPT. OF TRANSPORTATION, FEDERAL HIGHWAY ADMINISTRATION. ALL COSTS ASSOCIATED WITH CONSTRUCTION MARKINGS AND SIGNAGE SHALL BE THE CONTRACTOR'S RESPONSIBILITY.
- ALL ELEVATIONS SHOWN ARE NAVD 88.
- ALL AREAS DISTURBED DURING CONSTRUCTION THAT WILL NOT BE UNDER PROPOSED PAVEMENT SHALL BE RESTORED TO MATCH EXISTING CONDITIONS.
- ANY SIDEWALK, DRIVE APPROACH, OR STREET PAVEMENT REMOVED TO CONSTRUCT PROJECT MUST HAVE A PAVEMENT CUT PERMIT AND BE REPLACED BY CITY CONTRACTOR. PERMITS CAN BE OBTAINED BY CALLING 316-268-4501 OR 316-268-4480.
- CITY MAINTENANCE OF STORM SEWER ENDS AT THE LAST STRUCTURE IN THE EASEMENT OR RIGHT-OF-WAY.
- FOLLOW THE LINK BELOW FOR SPECIFIC CITY OF WICHITA STANDARD DETAILS:
<http://www.wichita.gov/government/departments/pwu/standardsconstruction>
- CONTRACTOR SHALL LIMIT THE EXTENT OF TRENCH OPEN OVERNIGHT AND WEEKENDS TO LESS THAN 50 FEET.
- EXISTING UTILITIES AND THEIR LOCATION, AS SHOWN ON THE PLANS REPRESENT THE BEST INFORMATION OBTAINABLE FOR DESIGN. LOCATION INFORMATION HAS BEEN OBTAINED FROM THE VARIOUS COMPANIES AND IS EITHER FROM COMPANY UTILITY DRAWINGS OR COMPANY PROVIDED FIELD LOCATIONS. THE PLAN LOCATIONS SHOWN ARE NOT GUARANTEED. ADDITIONAL EXISTING UTILITIES MAY ALSO BE ENCOUNTERED.
- CONTRACTOR SHALL PROVIDE POSITIVE DRAINAGE AWAY FROM ALL MANHOLE COVERS.
- THE INSPECTING FIRM SHALL SUBMIT TO THE CITY STORMWATER MAINTENANCE DIVISION A DIGITAL COPY OF THE CCTV INSPECTION OF THE CONDUITS AND STRUCTURES FOLLOWING CONSTRUCTION. THE DIGITAL FILE FORMATION SHALL BE COMPATIBLE WITH THE CITY INPUT TEMPLATE. A COPY OF THE TEMPLATE IS AVAILABLE UPON REQUEST AT 316-268-4090.
- WORK DONE UNDER THIS PROJECT IS SUBJECT TO THE CITY OF WICHITA REQUIREMENTS FOR "CONSTRUCTION OF INFRASTRUCTURE IMPROVEMENTS BY PRIVATE CONTRACT". THE CONTRACTOR SHALL BE FAMILIAR AND COMPLY WITH ALL OF THE REQUIREMENTS.
- DEVELOPER FOR THIS PROJECT IS:
MARCH OIL COMPANY
1223 N. ROCK ROAD, BLDG H, #200
WICHITA, KANSAS, 67206
JOHNNY STEVENS
316-636-2100



LOT 1, BLOCK 1, THE WATERFRONT SIXTH ADDITION

PROPOSED IMPERVIOUS=1.66 AC
PROPOSED PERVIOUS=0.17 AC.
WQ_v=0.16 AC.-FT.
CP_v=N/A

LEGEND



BENCHMARKS

- BM#1 *X* CUT TOP OF CURB ON THE NORTH SIDE OF 14TH STREET @ THE SE CORNER OF HOMEWOOD SUITES HOTEL. ELEV.=1381.38 N-1695028.96, E-1682818.28
- BM#2 *X* CUT TOP OF CURB AT NE CORNER OF 14TH AND LINDBERG SOUTH SIDE OF HANDICAP RAMP. ELEV.=1384.60 N-1695122.28, E-1683226.40
- BM#3 *X* CUT TOP OF CURB NORTH END OF ISLAND ON LINDBERG NORTH OF 13TH STREET. ELEV.=1381.66 N-1694681.90, E-1683244.30

DATUM:
1 - The Project Horizontal Datum is based on the NAD83 (1993), Kansas State Plane Coordinate System, South Zone, (US Survey Feet Definition), with a Combined Adjustment Factor (CAF) of 1.0001200144. All coordinates and dimensions shown on these plans are modified to Ground values.

The following equations can be used for conversion:
Ground Coordinates to State Plane Coordinates = Ground x 1/CAF
State Plane Coordinates to Ground Coordinates = State Plane x CAF

2 - The Vertical Datum used is NGVD29.

UTILITIES:
The underground utilities shown hereon were marked in the field by the utility owners in response to Kansas One Call Ticket Numbers: 1702312 and 17026331



PRIVATE STORM WATER SEWER PLAN FOR
WATERFRONT 6TH ADDITION
 RETAIL EXPANSION PHASE 3

©2017 MKEC Engineering All Rights Reserved
These drawings and their contents, including, but not limited to, all concepts, designs, & ideas are the exclusive property of MKEC Engineering (MKEC), and may not be used or reproduced in any way without the express consent of MKEC.

TITLE SHEET

PROJECT NO.	0450PPD	
DATE	FEB. 2017	
SCALE	1"=60'	
DESIGNED	DRAWN	CHECKED
SPE	BKS	SPE
NO.	REVISION	DATE
SHEET NO.		
1 OF 6		

PLUTED: Friday, March 24, 2017 @ 08:39AM

J:\PROJECTS\2017\1701010047_LK_WATERFRONT 6TH RETAIL EXPANSION\17047 CAD\SHOTS\05 CIVIL\SWS\17047 SWS LINE 1.DWG

AS BUILTS

Contractor: Wilks Underground
 Inspector: Matt Perez
 Date: 6-16-2017

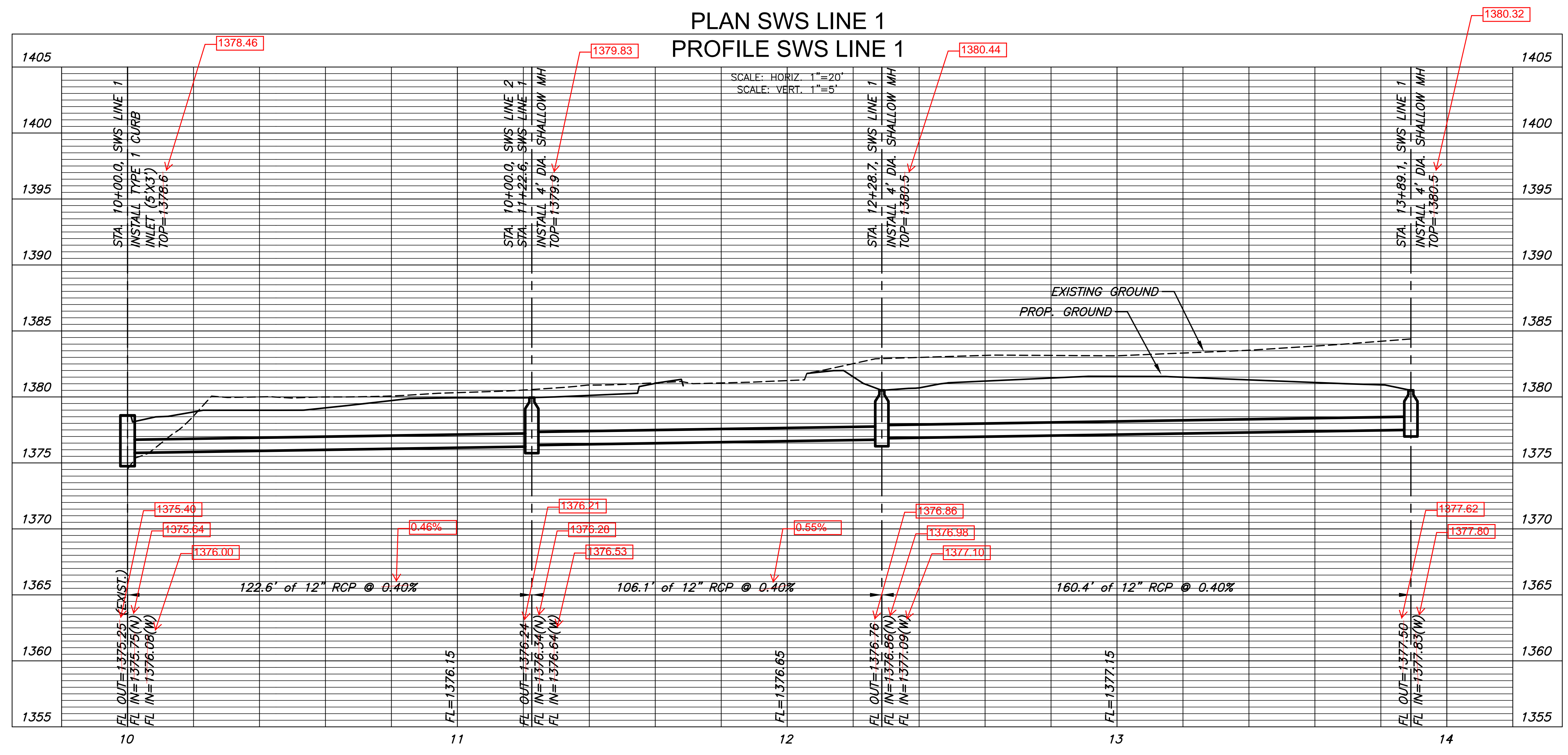
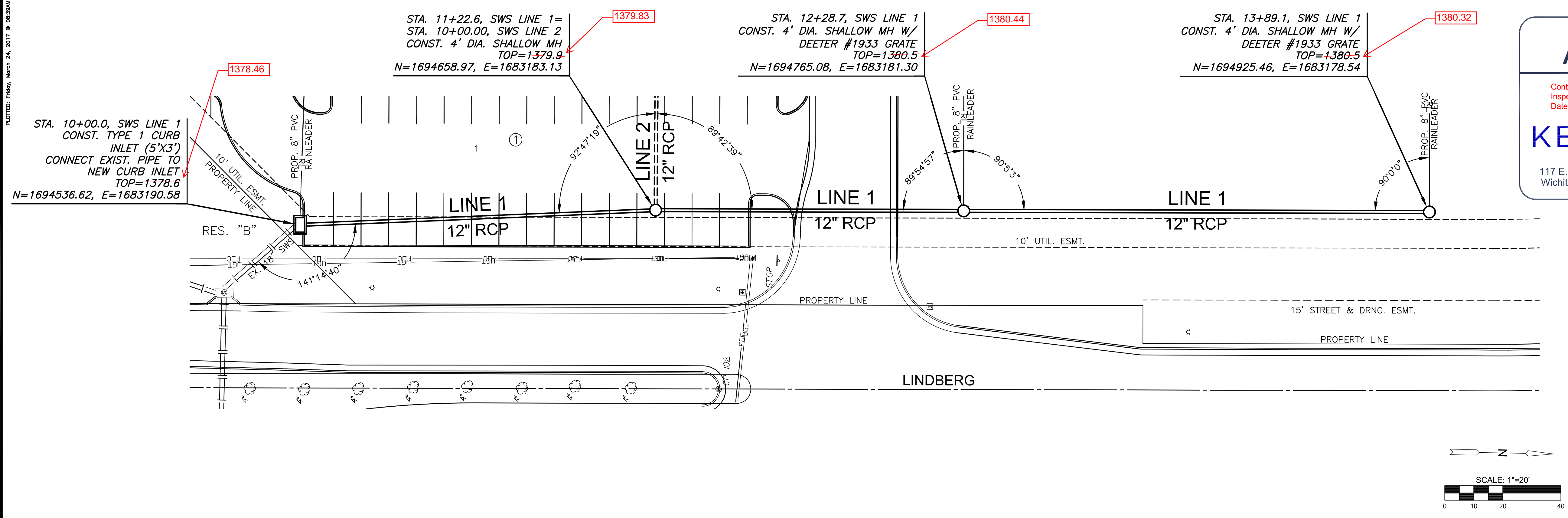
KEMILLER
 ENGINEERING PA

117 E. Lewis,
 Wichita, KS 67202 (316)264-0242

MKEC

Wichita, KS • 316-684-9600

STORM WATER SEWER PLAN FOR
WATERFRONT 6TH ADDITION
 RETAIL EXPANSION PHASE 3

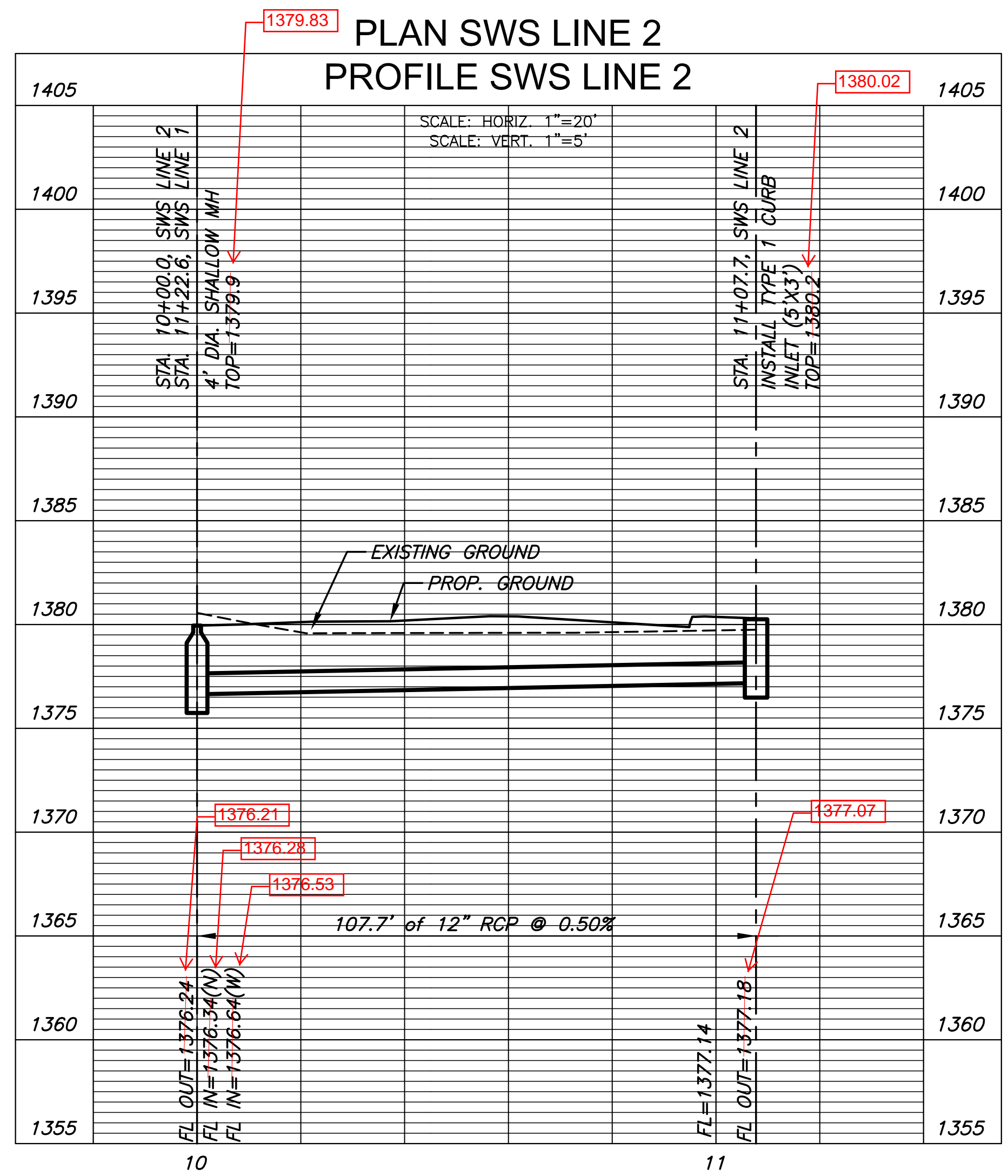
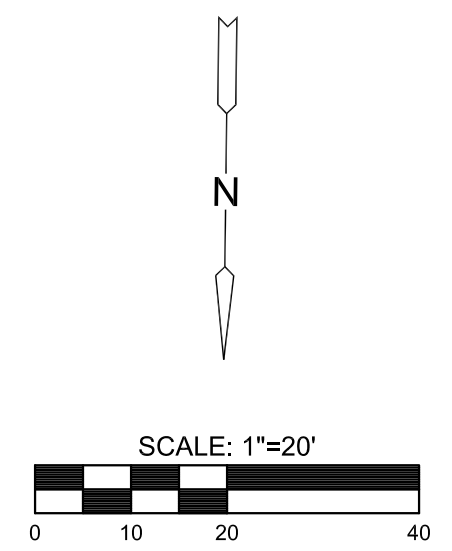
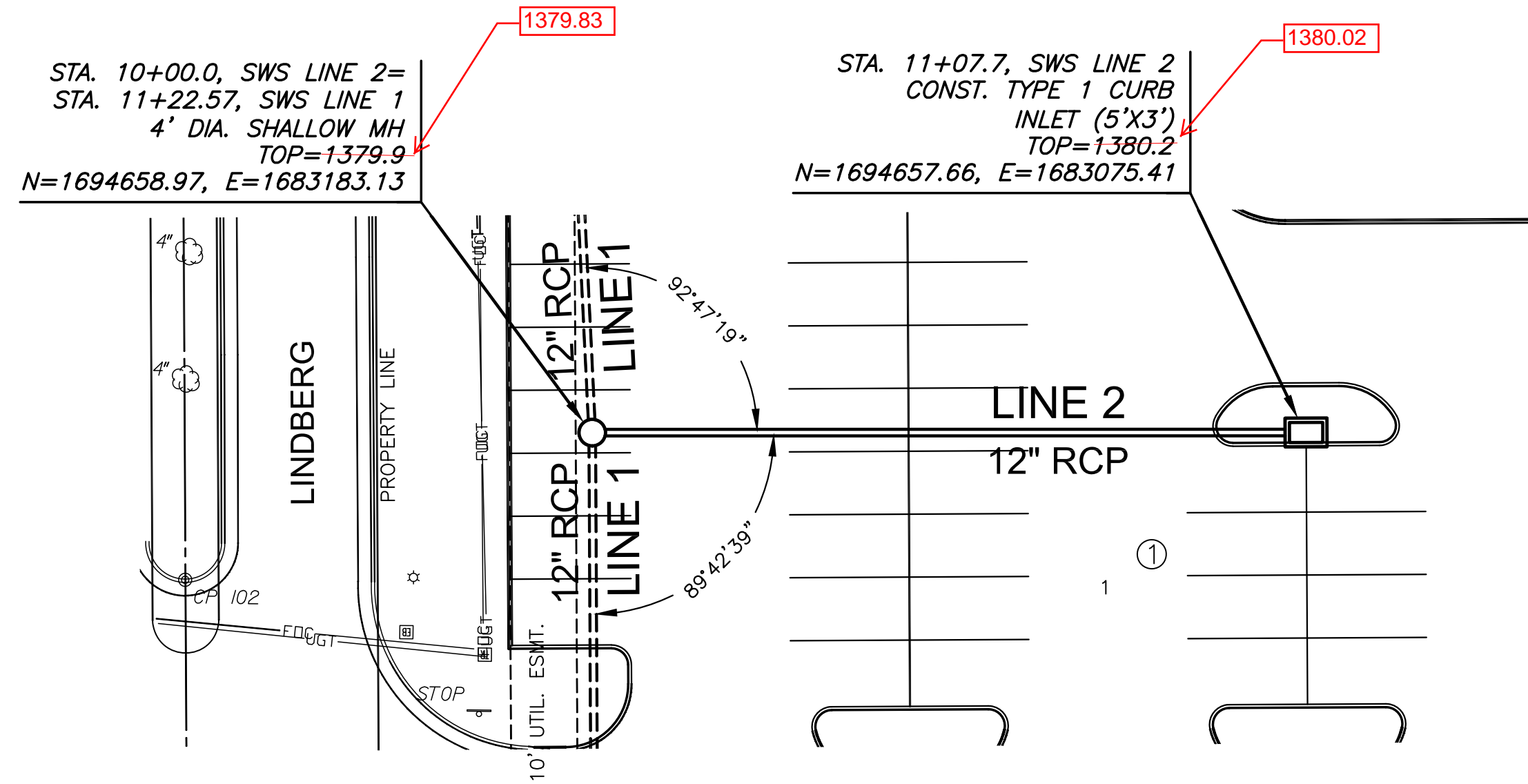


©2017
 MKEC Engineering
 All Rights Reserved
 www.mkec.com

These drawings and their contents, including, but not limited to, all concepts, designs, & ideas are the exclusive property of MKEC Engineering (MKEC), and may not be used or reproduced in any way without the express consent of MKEC.

SWS LINE 1

PROJECT NO.	0450PPD	
DATE	FEB. 2017	
SCALE	1"=20'	
DESIGNED	DRAWN	CHECKED
SPE	BKS	SPE
NO.	REVISION	DATE
SHEET NO.		
2 OF 6		



AS BUILTS

Contractor: Wilks Underground
 Inspector: Matt Perez
 Date: 6-16-17

KEMILLER

ENGINEERING PA

117 E. Lewis,
Wichita, KS 67202

(316)264-0242

STORM WATER SEWER PLAN FOR

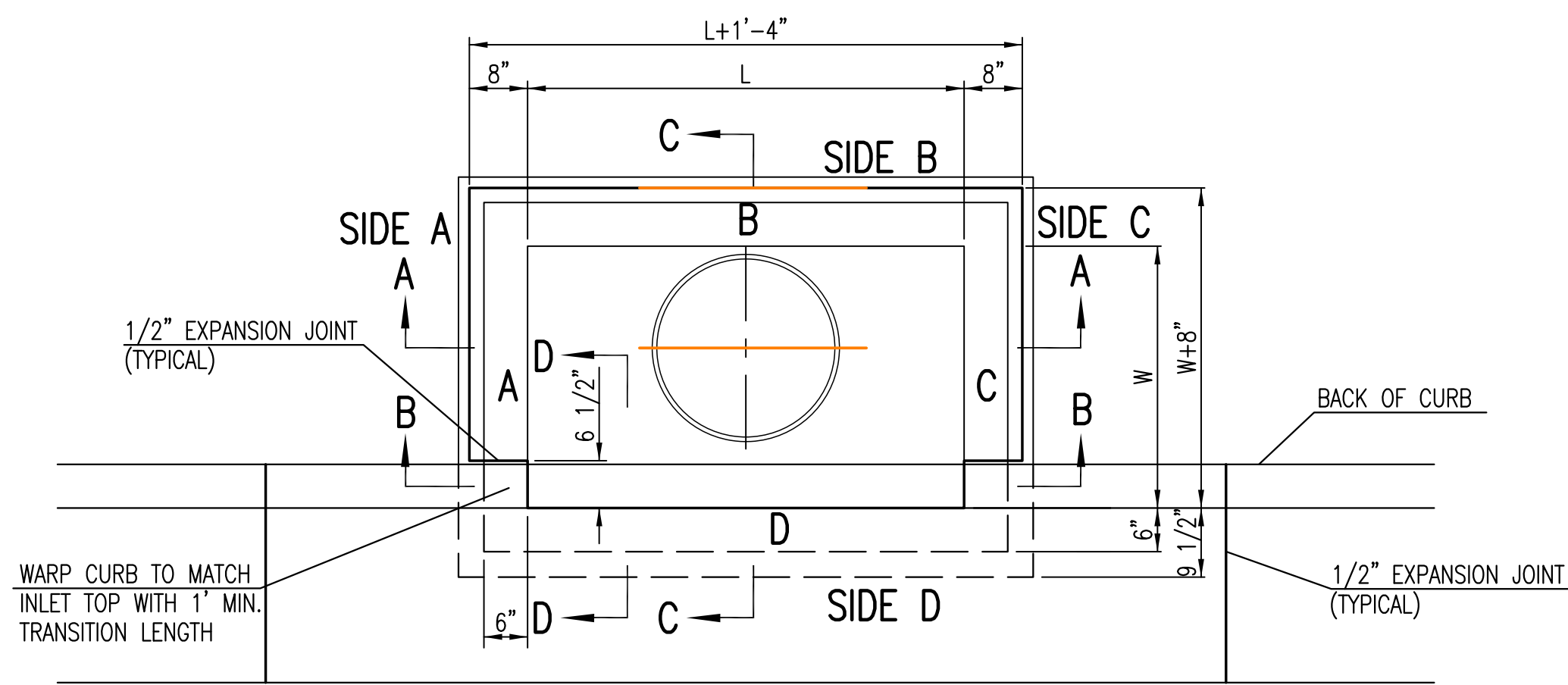
WATERFRONT 6TH ADDITION

RETAIL EXPANSION PHASE 3

©2017
MKEC Engineering
All Rights Reserved
www.mkec.com

These drawings and their contents, including, but not limited to, all concepts, designs, & lists are the exclusive property of MKEC Engineering (MKEC), and may not be used or reproduced in any way without the express consent of MKEC.

SWS LINE 2	
PROJECT NO.	0450PPD
DATE	FEB. 2017
SCALE	1"=20'
DESIGNED	DRAWN
SPE	BKS
CHECKED	SPE
NO.	REVISION
	DATE
SHEET NO.	
3 OF 6	



TOP VIEW

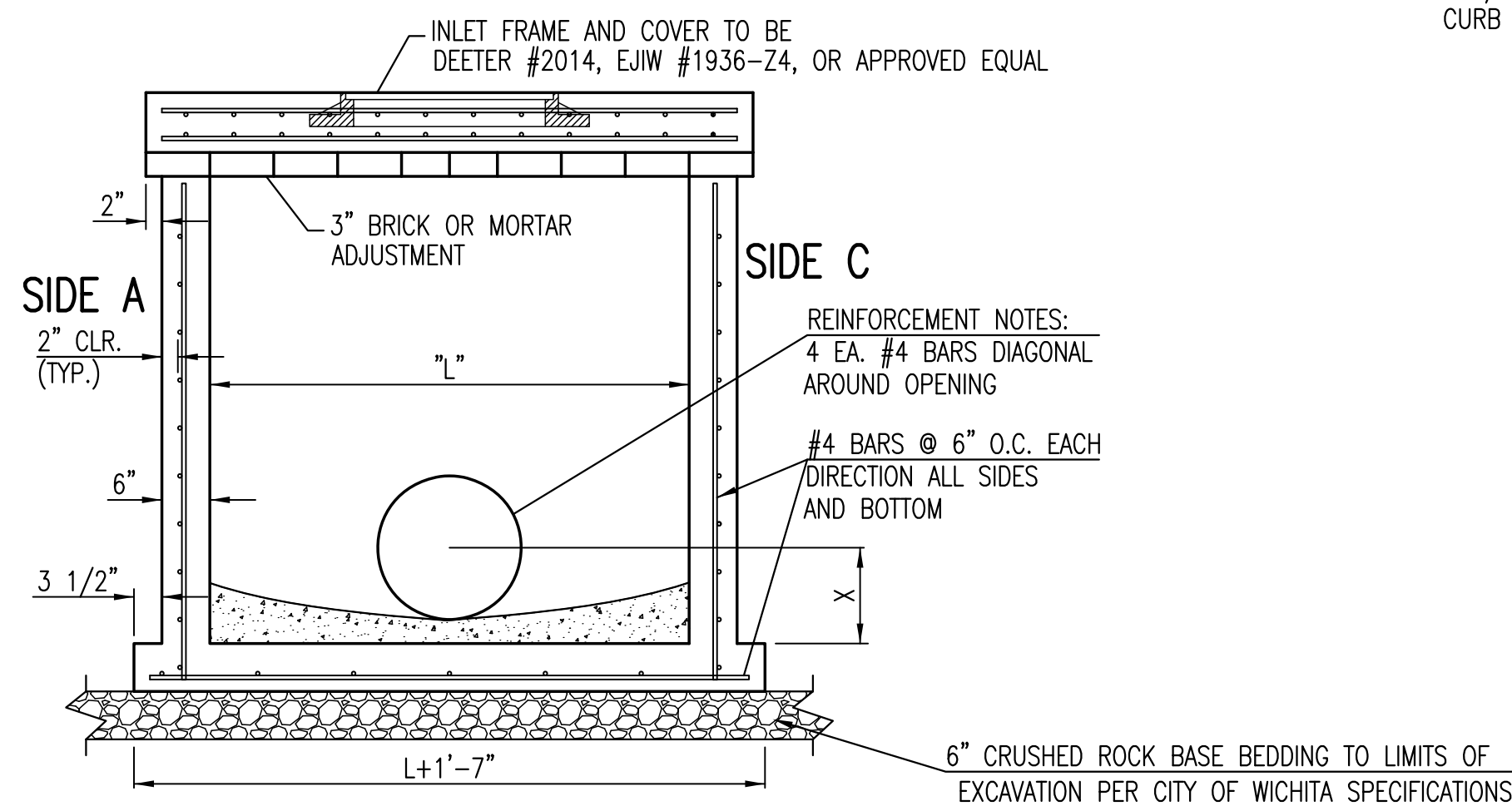
BAR SCHEDULE		
INLET OPENING	B1 BARS	SPACING
5'-0"	#4	4"
10'-0"	#6	3.5"

W	PRE-CAST TOP SIZE			PIPE DIA.**
	WIDTH	LENGTH	TOP	
3'-0"	W+8"	L+1'-4"	7 1/2"	21" & SMALLER
4'-0"	W+8"	L+1'-4"	7 1/2"	24" & 30"
5'-0"	W+8"	L+1'-4"	7 1/2"	36" & 42"
6'-0"	W+8"	L+1'-4"	7 1/2"	48" & 54"
7'-0"	W+8"	L+1'-4"	7 1/2"	60" & 66"

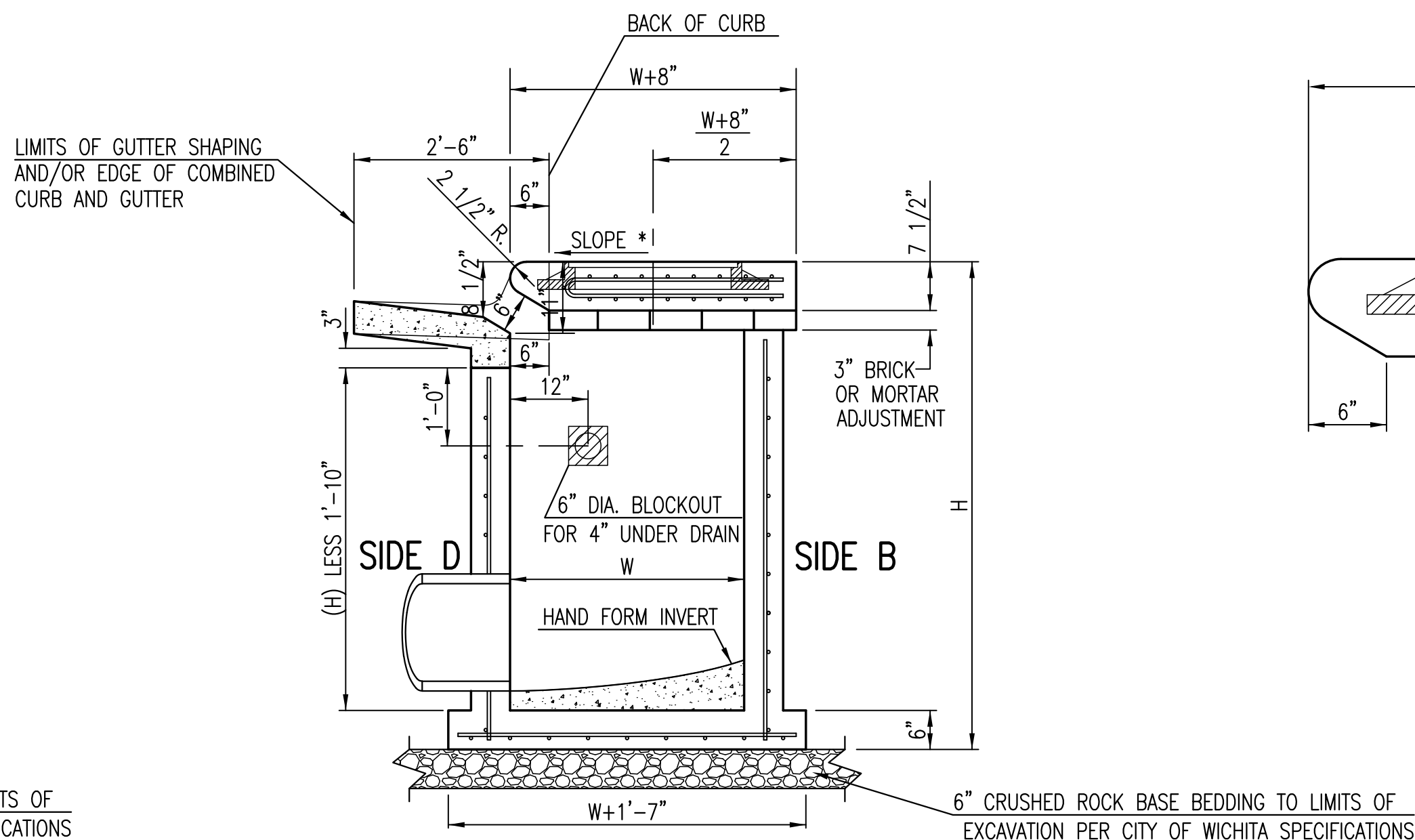
** FOR PIPES PERPENDICULAR TO INLET WALL

GENERAL NOTES

1. CONCRETE TOPS TO BE INSTALLED ON THIN MORTAR CUSHION TO INSURE FULL SUPPORT ALONG BRICK. CONCRETE TOPS MAY BE CAST IN PLACE OR PRECAST. CONCRETE USED FOR INLET CONSTRUCTION SHALL CONFORM TO CITY OF WICHITA SPECIFICATIONS FOR CONCRETE PAVEMENT MIX.
2. CONTRACTOR SHALL HAVE THE OPTION OF CONSTRUCTING 8" BRICK MASONRY WALLS BETWEEN THE CONCRETE INLET BASE AND TOP OF THIS INLET WHEN W=5'-0" AND H=7'-0" OR LESS.
3. INLET INVERT SHALL BE SHAPED WITH 8 SACK SAND MIX CONCRETE TO CREATE FLOW CHANNELS AND TO INCREASE HYDRAULIC EFFICIENCY SUCH THAT THE INLET WILL BE SELF CLEANING BETWEEN ALL INLET AND/OR OUTLET PIPES.
4. THE ENDS OF ALL PIPES INSTALLED IN INLETS SHALL BE CUT OFF FLUSH WITH THE INSIDE FACE OF THE INLET WALL.
5. INLET FRAME AND COVER TO BE DEETER #2014, EJIW #1936 Z4, OR APPROVED EQUAL, SEE SW-303.
6. CONTRACTOR SHALL REMOVE LIFTING HOOKS AFTER INSTALLATION. RECESSES IN INLET WALL SHALL BE GROUDED FLUSH TO THE INLET WALL WITH HYDRAULIC CEMENT AFTER THE INLET IS IN PLACE. LIFTING HOLES THRU THE INLET WALL WILL NOT BE ACCEPTED.

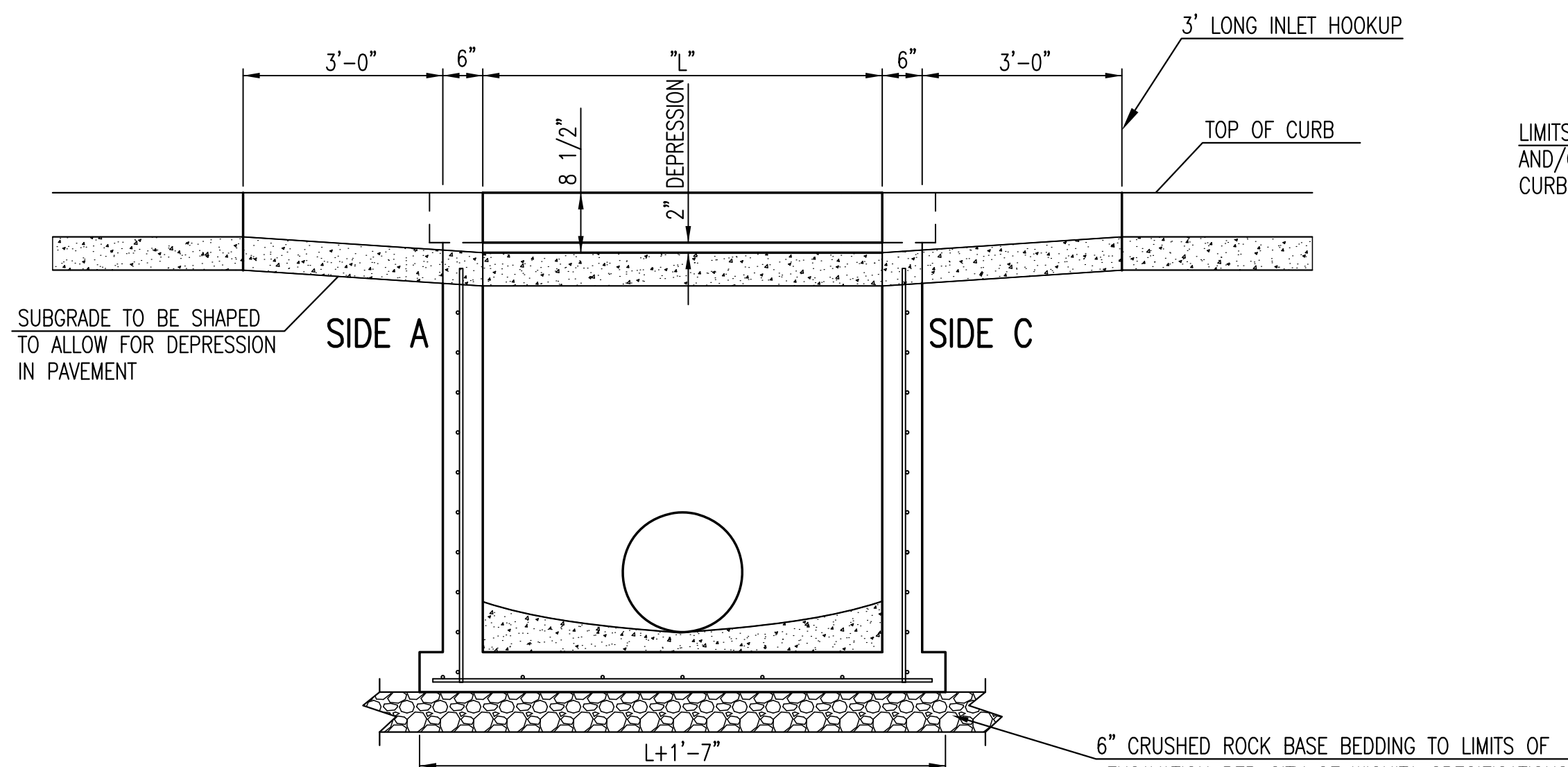
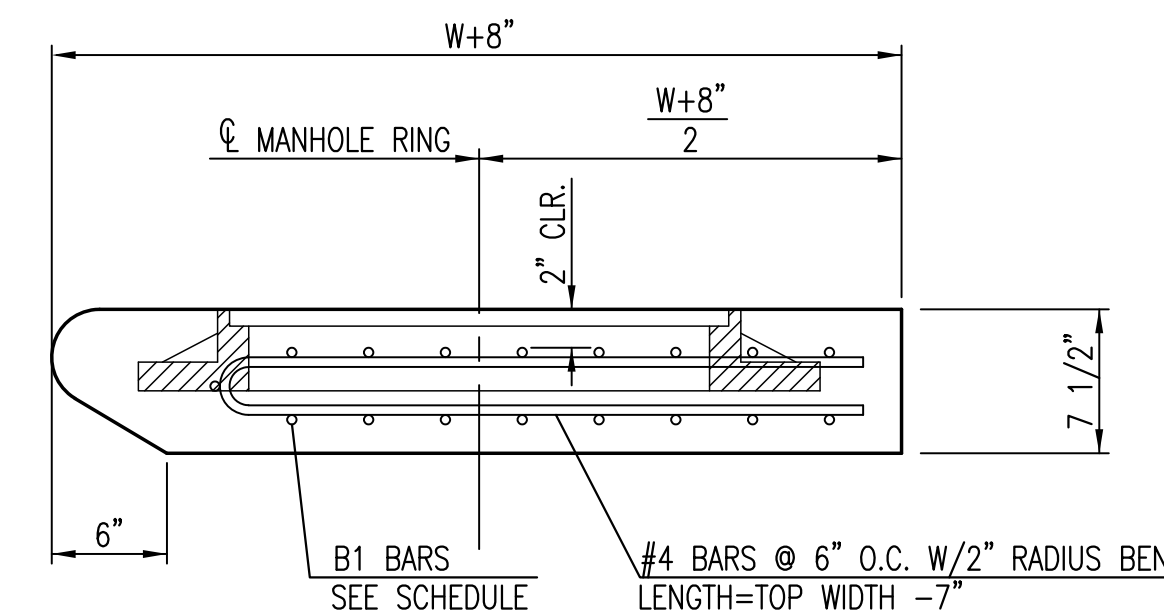


SECTION "A-A"

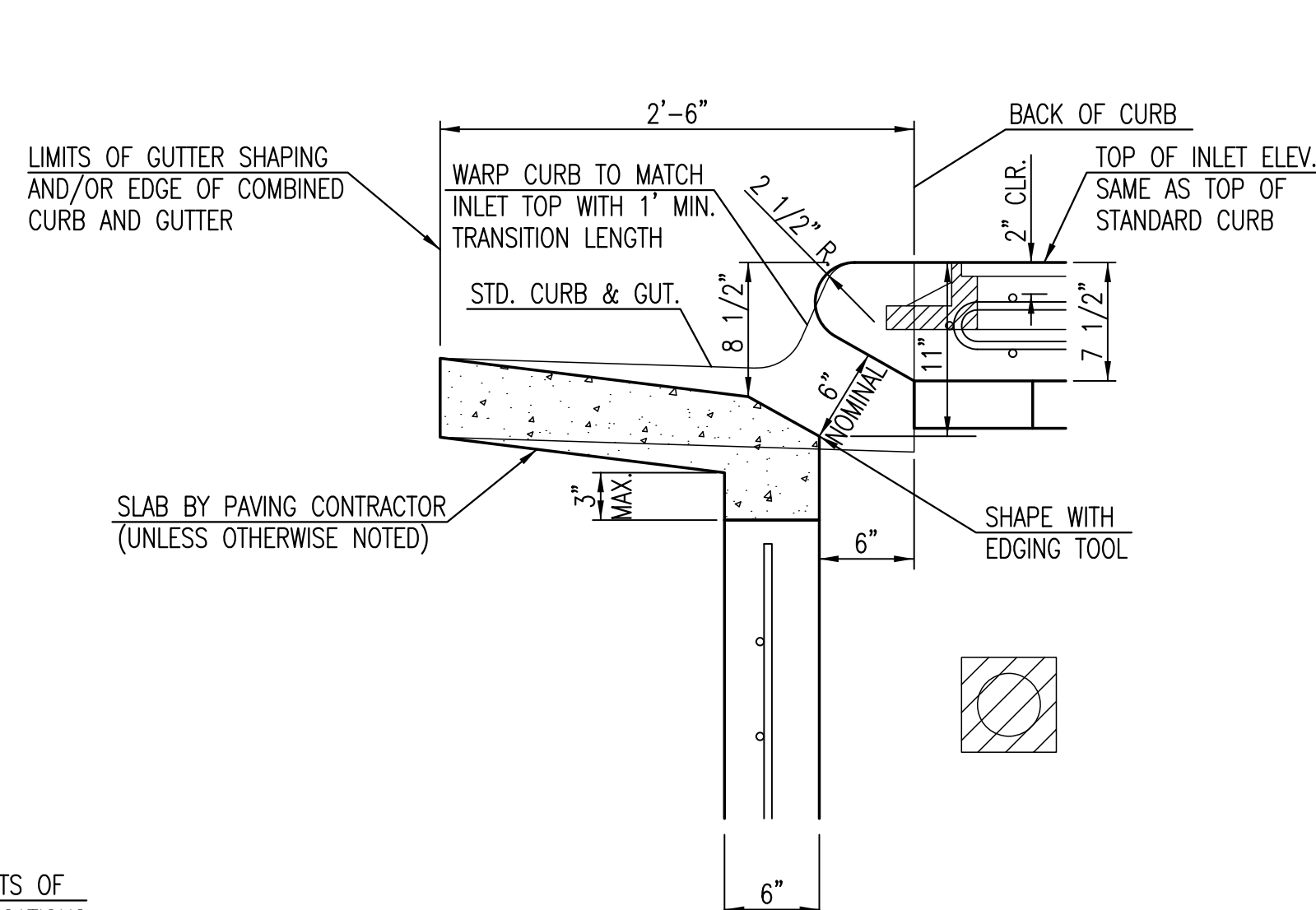


SECTION "C-C"

NOTES:
* SLOPE OF INLET TOP TO MATCH SIDEWALK OR PARKING SLOPES WITHIN LIMITS INDICATED.



SECTION "B-B"



SECTION "D-D"

Saved 02-16-2017 5:41:46 PM by BSMITH
 Plot Scale 1:1 03-24-2017 8:39:58 AM by SCOTT EVANS
 J:\Projects\2017\701010047_LK_Waterfront 6th Retail Expansion\17047 CAD\SHITS\05 Civil\Sw\SW-101_Type 1 Inlet 5' and 10'



REVISED: MARCH 2015

STANDARD TYPE 1 CURB INLET
5'-0" OR 10'-0" OPENING

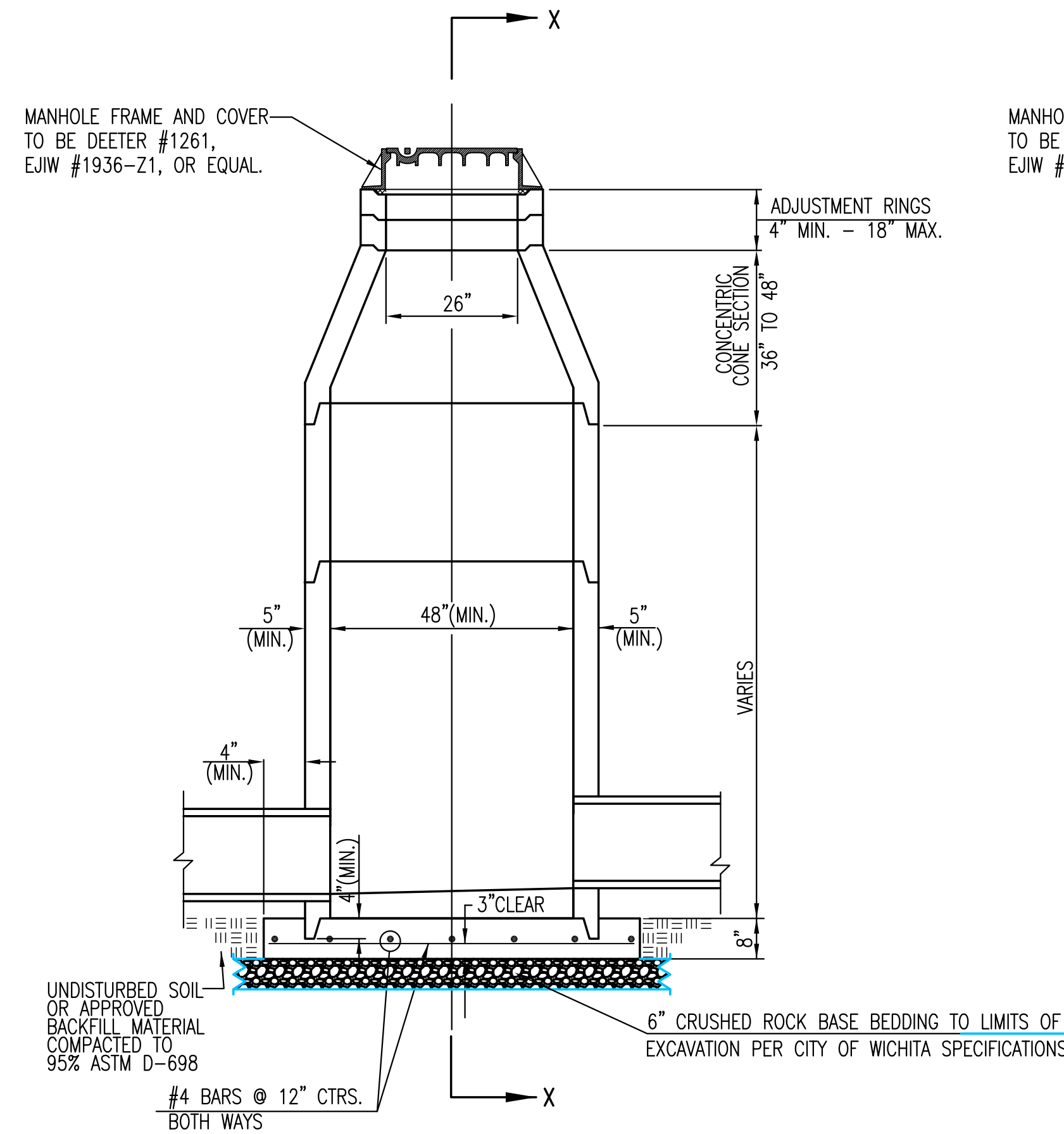
CITY ENGINEER
GARY JANZEN, P.E.

PROJECT NUMBER 0450PPD	OCA NUMBER 133119	DATE FEB. 2017
---------------------------	----------------------	-------------------

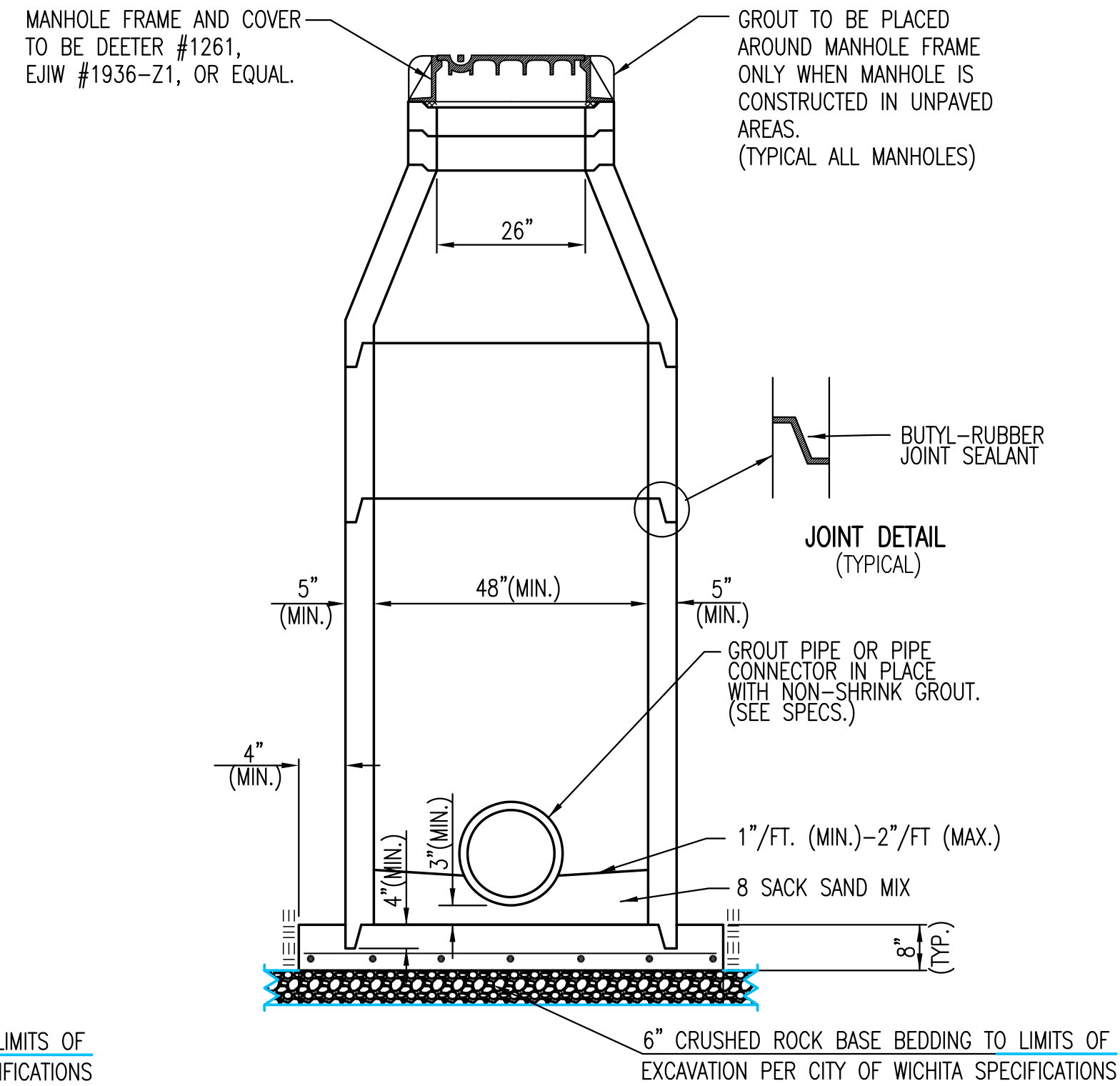
CITY ENGINEER'S OFFICE
CITY HALL - SEVENTH FLOOR
455 NORTH MAIN STREET
WICHITA, KANSAS 67202-1620
(316) 268-4501

SHEET
4 OF 6

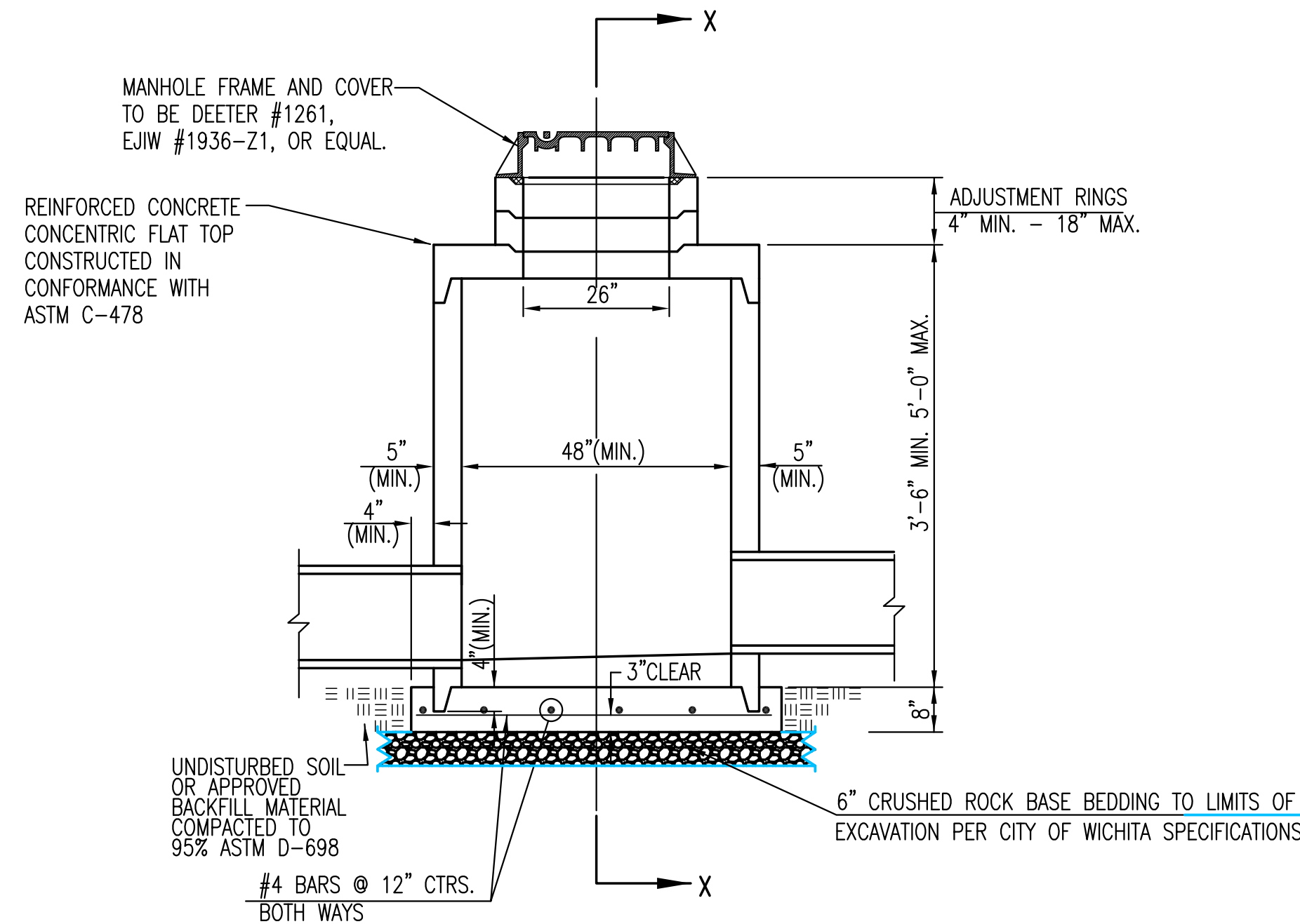
J:\Projects\2017\701010047_LK_Waterfront 6th Retail Expansion\17047 CAD\SHITS\05 Civil\Sw\SW-101_Type 1 Inlet 5' and 10'.dwg



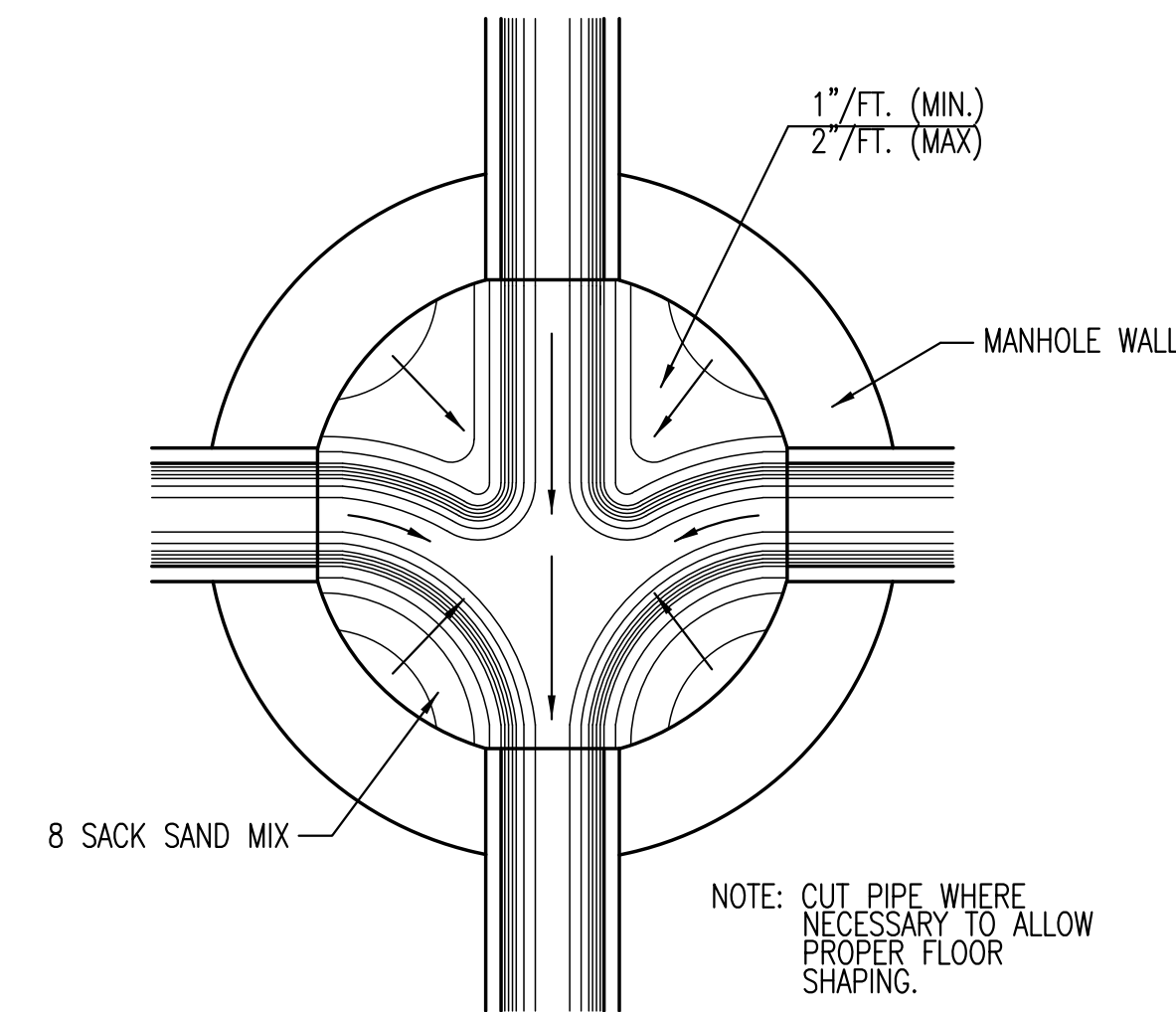
PRECAST STANDARD MANHOLE TYPE "A"



SECTION X-X (TYPICAL)



PRECAST SHALLOW MANHOLE TYPE "B"



TYPICAL MANHOLE FLOOR SHAPING

GENERAL NOTES

- IF, IN THE OPINION OF THE ENGINEER, THE MANHOLE SUBGRADE APPEARS UNSTABLE, THE CONTRACTOR WILL HAVE THE OPTION TO COMPACT SUBGRADE AS SHOWN OR INCREASE THE THICKNESS OF THE MANHOLE BASE AS DIRECTED BY THE ENGINEER.
- STEEL REINFORCING WILL BE REQUIRED IN ALL MANHOLE BASES.
- ALL MANHOLE CONSTRUCTION SHALL BE WATER TIGHT.
- TOP OF MANHOLE FLOOR SLAB SHALL BE AT LEAST 3 INCHES BELOW THE FLOW LINE OF THE OUTLET PIPE TO INSURE SUFFICIENT MINIMUM THICKNESS OF SHAPED INVERT.
- ALL PRECAST CONCRETE MANHOLE SECTIONS SHALL CONFORM TO THE LATEST REVISION OF ASTM C-478 AS MODIFIED BY THE SPECIFICATIONS.
- CONCRETE USED FOR MANHOLE CONSTRUCTION SHALL CONFORM TO CITY OF WICHITA SPECIFICATIONS FOR CONCRETE PAVEMENT MIX.
- PRECAST MANHOLES SHALL BE SET AT LEAST 4 INCHES INTO MANHOLE BASE.
- MANHOLES WITH PIPE SIZES 24" AND LARGER SHALL HAVE 5 FOOT INSIDE DIAMETER (MIN.)
- MANHOLES WITH PRECAST BASES MAY BE USED AT THE CONTRACTORS OPTION. THESE MANHOLES SHALL HAVE AN 8" MINIMUM BASE THICKNESS AND SHALL BE PLACED ON AN 8" MIN. CRUSHED ROCK BASE. PIPES SHALL BE ENCASED WITH CRUSHED ROCK TO AT LEAST 3 FEET FROM THE MANHOLE WALL.
- CONTRACTOR SHALL REMOVE LIFTING HOOKS AFTER INSTALLATION. RECESSES IN MANHOLE WALL SHALL BE GROUTED FLUSH TO THE MANHOLE WALL WITH HYDRAULIC CEMENT AFTER THE MANHOLE IS IN PLACE. LIFTING HOLES THRU THE MANHOLE WALL WILL NOT BE ACCEPTED.
- THE ENDS OF ALL PIPES IN MANHOLES SHALL BE CUT OFF FLUSH WITH THE INSIDE FACE OF THE MANHOLE WALL.
- MANHOLE INVERT SHALL BE SHAPED WITH 8 SACK SAND MIX CONCRETE TO CREATE FLOW CHANNELS AND TO INCREASE HYDRAULIC EFFICIENCY SUCH THAT THE MANHOLE WILL BE SELF CLEANING BETWEEN ALL INLET AND/OR OUTLET PIPES.
- MANHOLE FRAME AND COVER TO BE DEETER #1261, EJIW #1936-Z1, OR APPROVED EQUAL, SEE SW-303.
- FOR FLAT GRATED INLET APPLICATION, GRATE TO BE DEETER #1933, EJIW #1205 MDI, OR APPROVED EQUAL.
- FOR BEEHIVE GRATE APPLICATION, GRATE TO BE DEETER #4495, EJIW #120545, OR APPROVED EQUAL.

CITY OF WICHITA
PUBLIC WORKS & UTILITIES
ENGINEERING DIVISION

REVISED: MARCH 2015

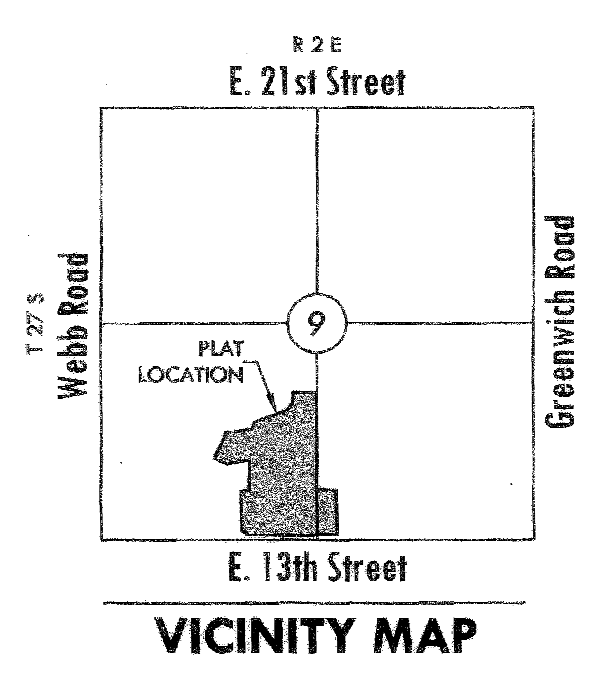
PRECAST CONCRETE MANHOLE (STORM SEWER)

CITY ENGINEER
GARY JANZEN, P.E.

PROJECT NUMBER	OCA NUMBER	DATE
0450PPD	133119	FEB. 2017

CITY ENGINEER'S OFFICE	SHEET
CITY HALL - SEVENTH FLOOR 455 NORTH MAIN STREET WICHITA, KANSAS 67202-1620 (316) 268-4501	5 OF 6

FINAL PLAT
THE WATERFRONT SIXTH ADDITION
 AN ADDITION TO WICHITA, SEDGWICK COUNTY, KANSAS



BENCH MARK
 Square cut on SW. corner of signal light pole base at NE. corner of Webb Rd. and 13th St.
 Datum BM Elev.=1373.345 (NGVD 29)

MINIMUM PAD ELEVATION LOWEST BUILDING OPENING

LOT	BLOCK	ELEVATION NGVD 29
2	1	1380.5
N. 550.53' of 3	1	1380.5
S. 265.0' of 3	1	1386.1
N. 270.0' of 4	1	1386.1

STREET CENTERLINE TABLE

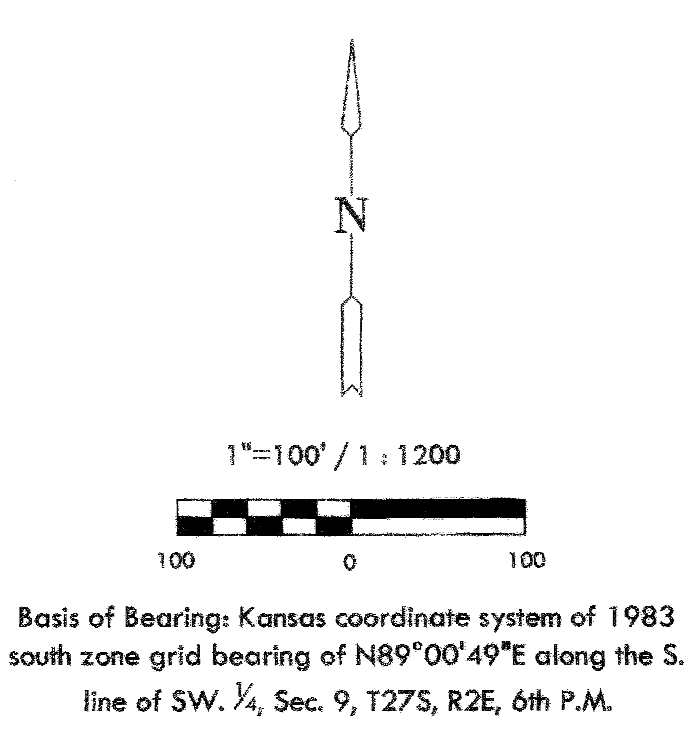
LINE	LENGTH	BEARING
L1	526.69'	N00°59'11"W
L2	67.65'	N15°25'33"E
L3	141.50'	S89°00'49"W
L4	45.00'	S75°42'05"W

STREET CENTERLINE CURVE TABLE

CURVE	LENGTH	RADIUS	DELTA
C1	156.40'	600.00'	14°56'06"
C2	218.84'	400.00'	31°20'50"
C3	193.87'	300.00'	37°01'32"
C4	82.78'	200.00'	23°42'48"
C5	64.31'	215.00'	17°08'21"

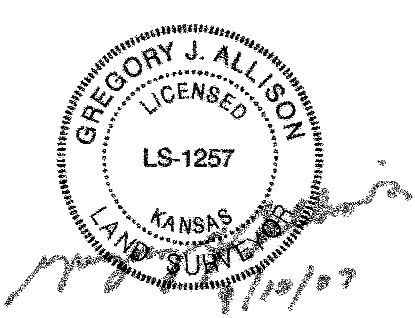
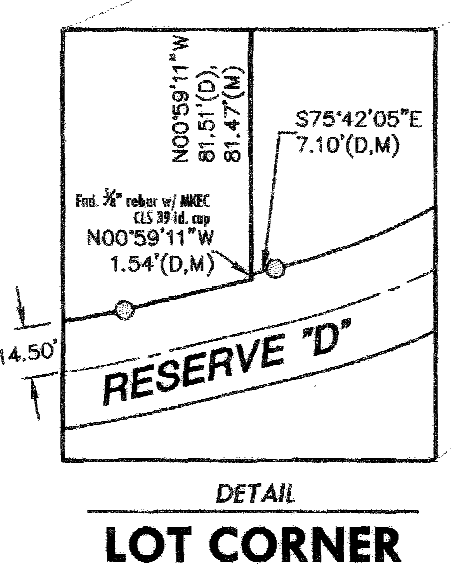
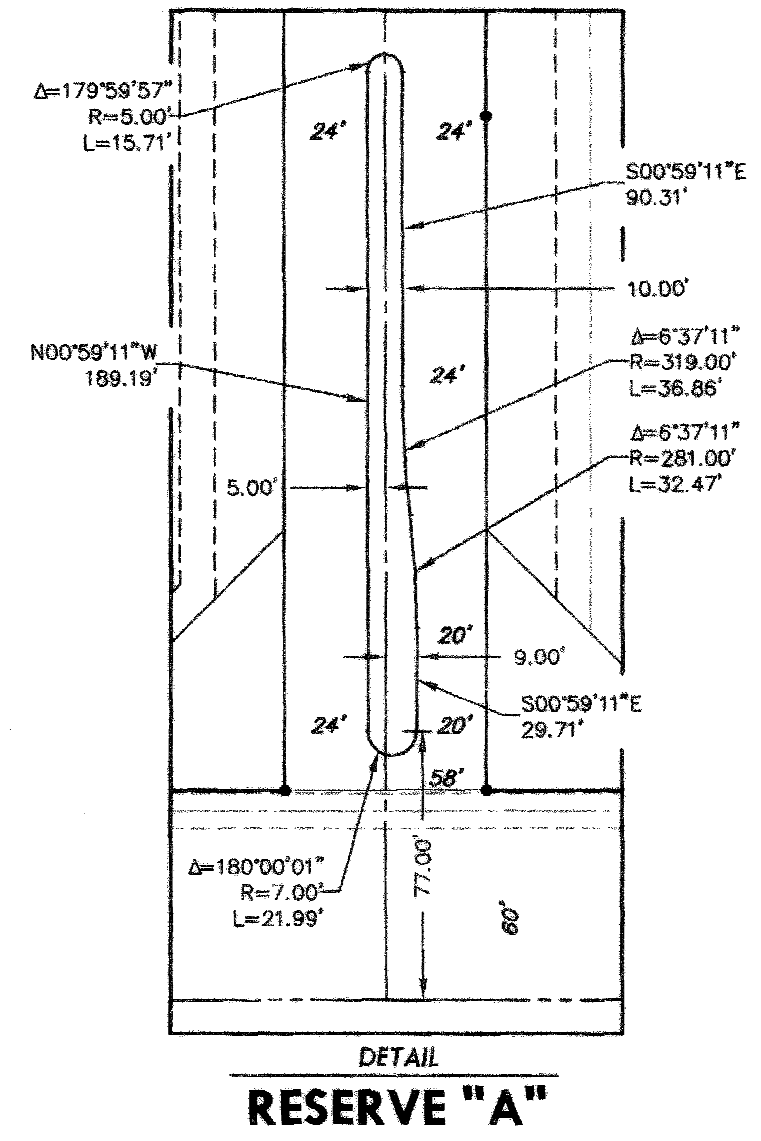
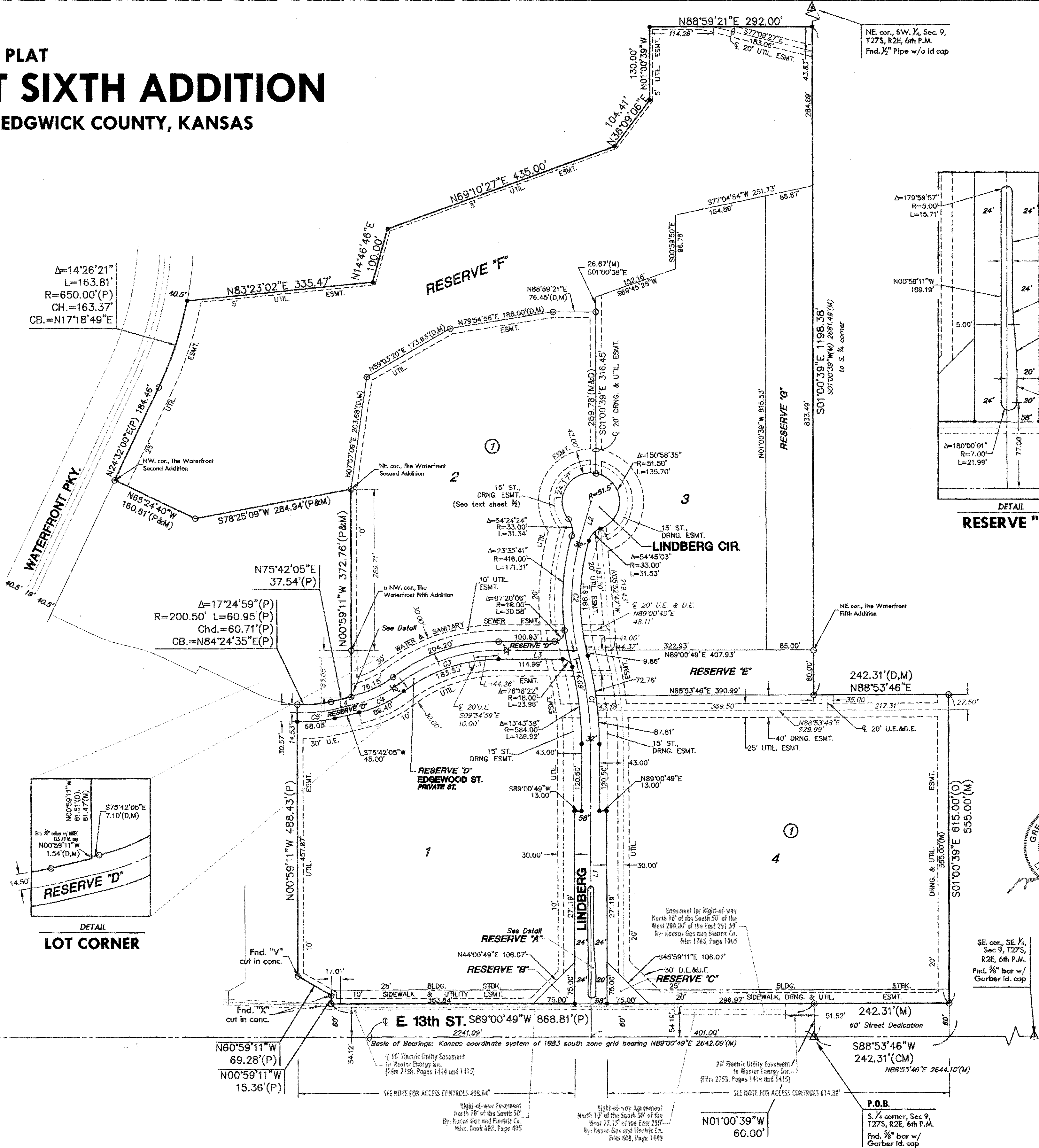
NOTES

- Access Controls:**
 13th Street - Access points for Block 1 shall be placed accordingly: The minimum distance between full turning movement drives shall be 400'. The minimum distance between a right-in/right-out drive and either another right-in/right-out drive or a full movement drive shall be 200'.
- Street Drainage Easements:**
 Along Lindberg Street and Lindberg Circle where there is 32' of right-of-way a 15' street drainage easement is provided abutting and adjoining the 32' right-of-way as indicated.



LEGEND
 Date of Survey: July, 2006

- △ = Section corner Monument Found
- = Found 3/8" Rebar w/ MKEC CLS 39 id. cap
- = Set 3/8" Rebar w/ MKEC CLS 39 id. cap
- (M) = Measured
- (CM) = Calculated from measured
- (P) = Platted
- (D) = Described or Record Dimension



FINAL PLAT

PROJECT NO.	0450PPD	
DATE	FEB. 2017	
SCALE	NTS	
DESIGNED	DRAWN	CHECKED
SPE	BKS	SPE
NO.	REVISION	DATE

MKEC
 ENGINEERING CONSULTANTS, INC.
 411 N. WEBB ROAD
 WICHITA, KS. 67206
 316-684-9600