



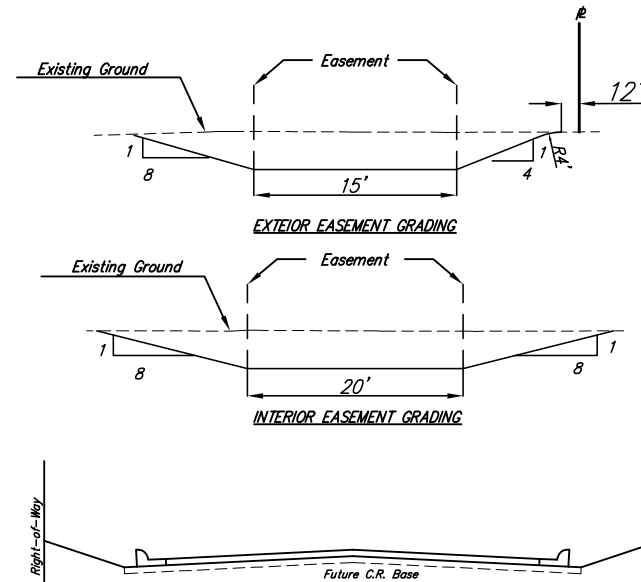
SCALE 1" = 60'

NOTE:
SILT OR OTHER MATERIALS FROM THE EXCAVATION SHALL NOT BE ALLOWED AS FILL MATERIAL IN STREET RIGHT OF WAY UNLESS APPROVED BY ENGINEER.

SEED, FERTILIZE AND MULCH DISTURBED LOTS BETWEEN RIGHT-OF-WAY AND REAR-YARD UTILITY EASEMENTS.

ALL DEAD TREES AND TREE BRANCHES THAT ARE ON THE PROJECT SHALL BE REMOVED AND DISPOSED OF BY THE CONTRACTOR. REMOVAL AND DISPOSAL SHALL BE SUBSIDIARY TO BID ITEM FOR "SITE CLEARING AND RESTORATION". ALL TREES NOT SPECIFIED BY THE ENGINEER FOR REMOVAL WILL NOT BE REMOVED AND SHALL BE PROTECTED FROM DAMAGE.

ALL EXISTING RUBBLE AND TRASH LOCATED ON THE SITE SHALL BE REMOVED AND DISPOSED OF BY THE CONTRACTOR. PAYMENT FOR WORK SHALL BE SUBSIDIARY TO "SITE CLEARING AND RESTORATION."



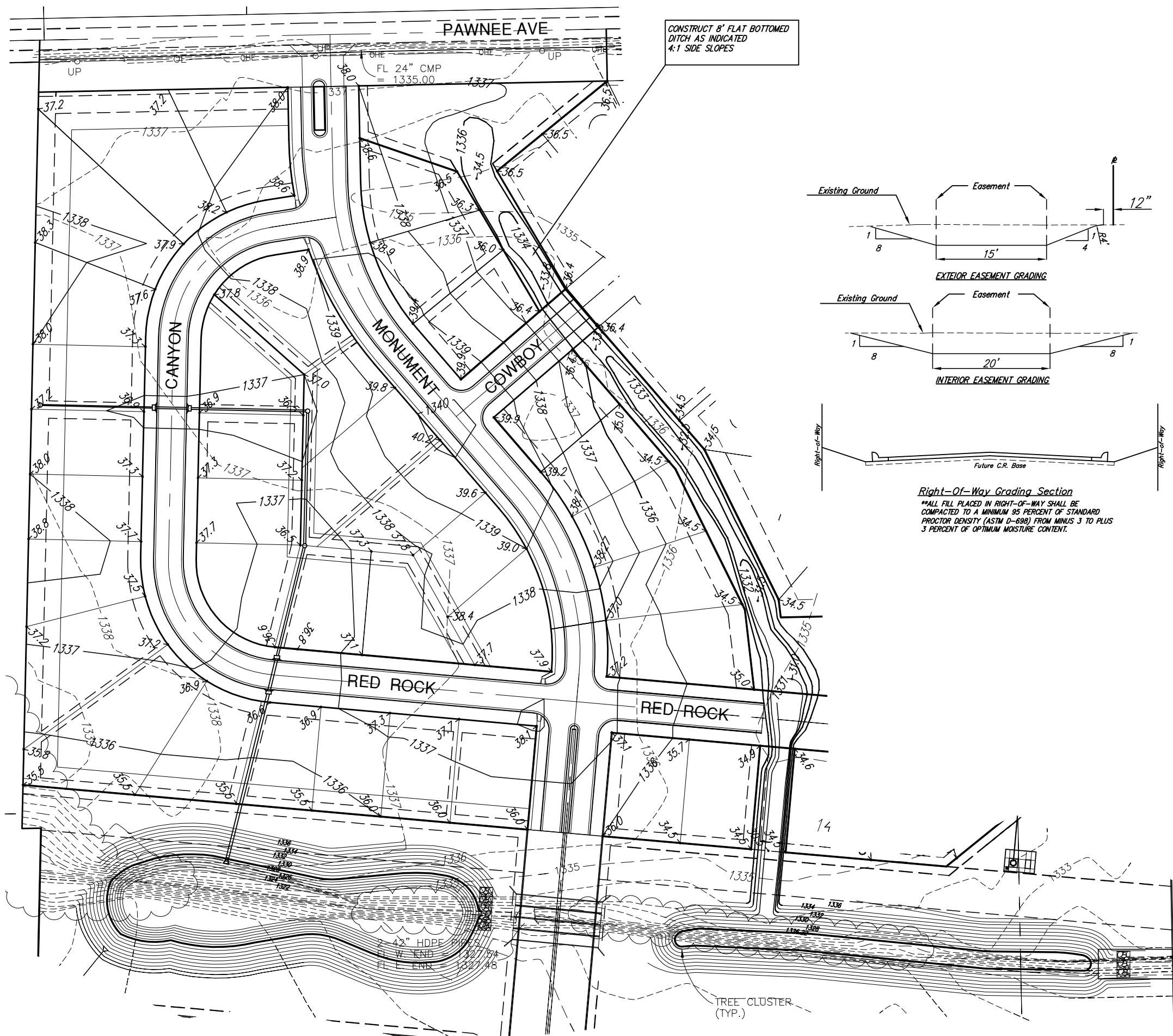
Right-Of-Way Grading Section

**ALL FILL PLACED IN RIGHT-OF-WAY SHALL BE COMPACTED TO A MINIMUM 95 PERCENT OF STANDARD PROCTOR DENSITY (ASTM D-698) FROM MINUS 3 TO PLUS 3 PERCENT OF OPTIMUM MOISTURE CONTENT.

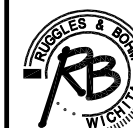
FOR INFORMATION ONLY
SITE GRADING QUANTITIES
CUT = 29296
COMPACTED FILL = 13250
NET = 16046 CUT



TREES IN CONFLICT WITH GRADING ARE TO BE REMOVED SUBSIDIARY TO THE BID ITEM FOR SITE CLEARING AND RESTORATION



**SOUTHWEST PASSAGE
SITE GRADING PLAN
WICHITA, KANSAS**



Ruggles & Bohm, P.A.
Engineering, Surveying, Land Planning
824 North Main (316) 264-8008
Wichita, Kansas 67203 (316) 264-4621 fax
www.rbkansas.com E-mail: info@rbkansas.com

DRAWING FILE: SWD {Site Grading} PROJECT NUMBER: 468-84230 DATE: Oct 25, 2006

DESIGN	KWL	SHEET 3 OF 12
DRAWN	MLP	
REVIEW		
UTILITY		