

LIFT STATION & SANITARY SEWER EXTENSION

to serve

Main 26, Southwest Interceptor
Emerald Bay Estates 3rd Addition

CITY OF WICHITA, KANSAS

Gary Janzen, P.E. City Engineer

Project Number 468-85243

O.C.A. NO. 621103

GENERAL NOTES:

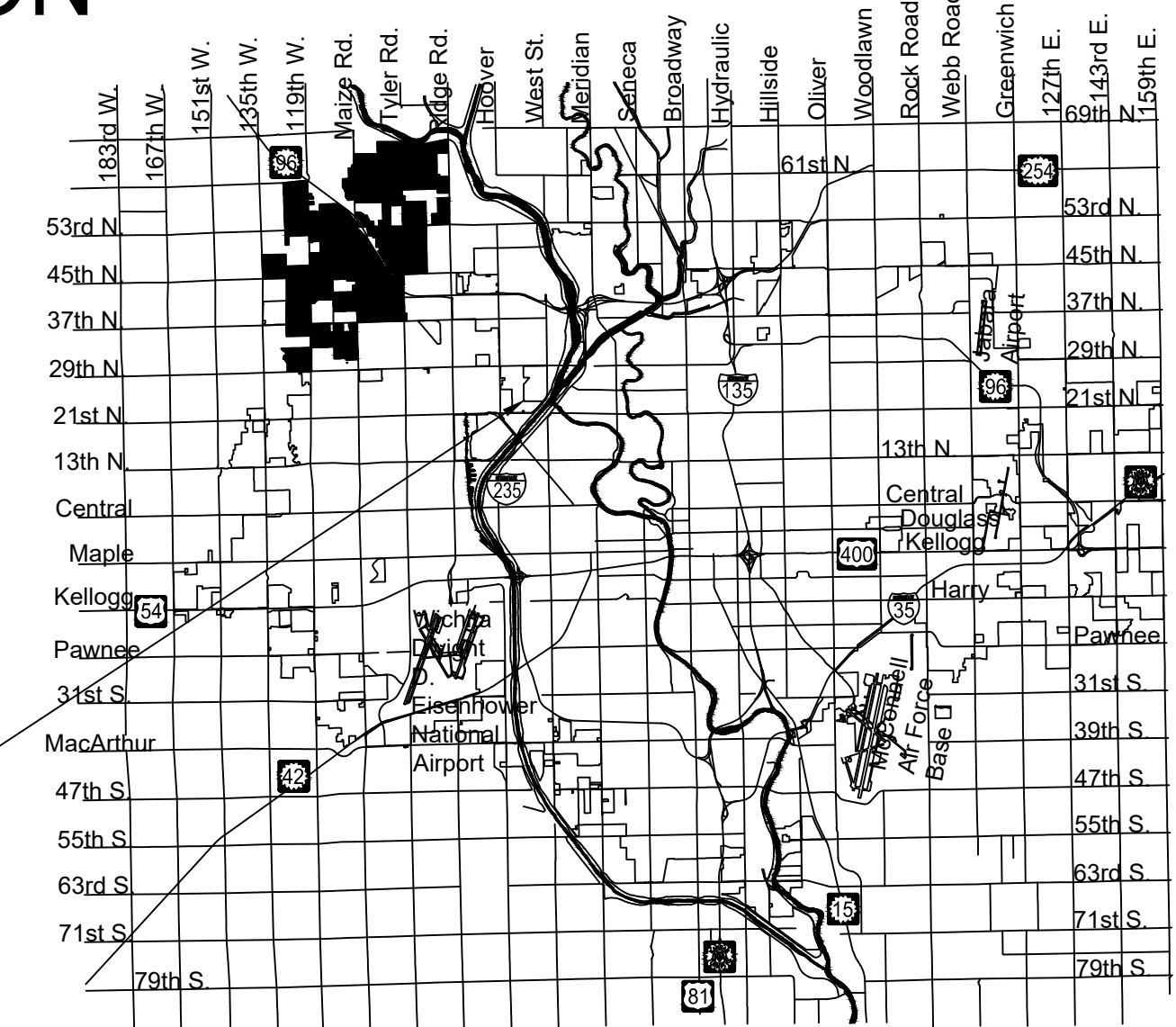
- The Contractor shall comply with all applicable safety regulations. All construction shall be completed following current City Standard Specifications and Special Provisions.
- Contractor will be required to provide notice to utility companies a minimum of seventy-two (72) hours prior to any excavation, as follows:

Kansas One-Call 687-2470

The Contractor must notify the following in case of an emergency:

AT&T	1-800-246-8464
Black Hills Energy	1-800-694-8989
City of Wichita Water & Sewer Dept.	1-316-219-8921
City of Wichita Stormwater	1-316-268-4090
City of Wichita Traffic	1-316-268-4034
Cox Communications	1-888-249-3530
Kansas Gas Service	1-888-482-4950
Westar Energy	1-800-544-4857

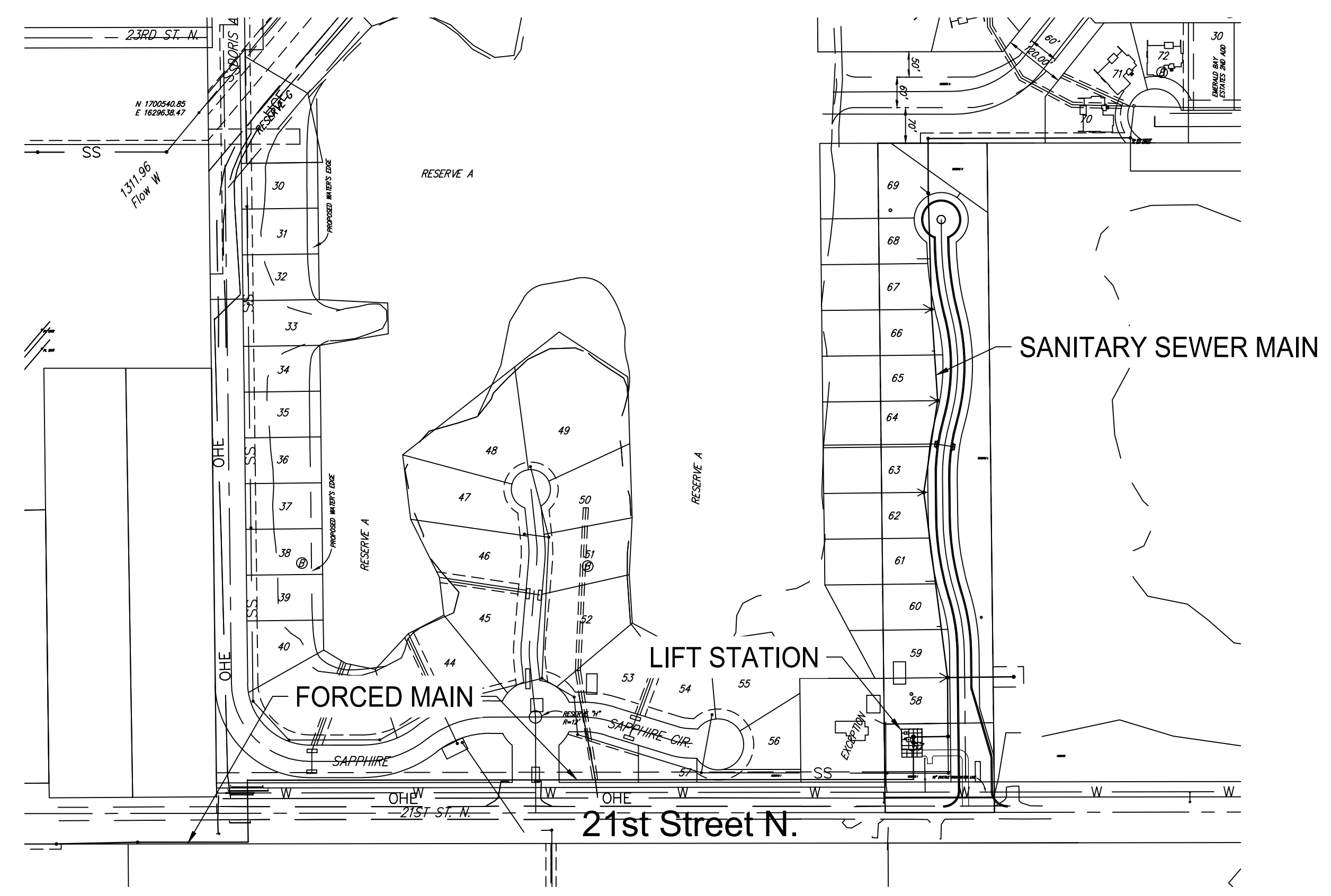
- Utility service lines, poles, etc. are to be adjusted as necessary by others prior to construction unless the plans specifically call for their adjustment by the Contractor or unless the plans specifically identify a utility to be adjusted by its owner during construction. Existing utilities and their location, as shown on the plans, represent the best information obtainable for design. The Contractor will be required to work around existing utilities within the right-of-way which do not conflict with proposed construction.
- Rubble from the removal of miscellaneous structures and excess excavation which is to be wasted shall be disposed of on sites to be provided by the Contractor. These sites shall be approved by the Engineer as to suitability, appearance and site location. Locations, in the opinion of the Engineer, that will leave an unsightly appearance will not be approved. All disposal sites must be approved by the Kansas Department of Health and Environment. Material either stockpiled or disposed of in a flood plain will require a Kansas State Board of Agriculture permit. Any material dumped in waters of the United States or wetlands is subject to U.S. Corps. of Engineers permitting regulations. Any material buried or stockpiled beyond approved construction limits will require additional archaeological investigations unless buried in a previously approved borrow location.
- Trees and shrubs in public right-of-way which are in direct conflict with proposed new construction shall be removed by the Contractor with the Engineer's approval. Trees and shrubs which are not in direct conflict with proposed new construction shall be saved and protected from damage.
- The Contractor shall give all property owners and/or tenants of developed property abutting the construction of this project a minimum of ten (10) days notice prior to start of construction.
- The Contractor shall be responsible for preserving property irons. The Contractor will be required to re-establish any property irons which are damaged or destroyed by his construction operations. Such irons shall be re-established by a licensed land surveyor in accordance with state laws.
- If traffic will be impacted by construction, a traffic control plan must be submitted and approved by the City Traffic Engineer, Brian Coon at traffic@wichita.gov before construction can begin. The Contractor shall be responsible for all traffic control measures to facilitate construction. All construction zone markings and signage shall conform to the latest version of the Manual on Uniform Traffic Control Devices (MUTCD) as published by the US Dept. of Transportation, Federal Highway Administration. All costs associated with construction markings and signage shall be the Contractors responsibility.
- All elevations shown are NAVD 88.
- All areas disturbed during construction that will not be under proposed pavement shall be restored to match existing conditions.
- The Contractor shall protect from damage and support existing utilities through constructions as approved by the utility owner and the Engineer at the contractors expense.
- Contractor shall limit the extent of trench openings overnight and weekends to less than 50 feet.
- Any sidewalk, drive approach, curb, or street pavement removed to construct project must have a pavement cut permit and be replaced by the City contractor. Permits can be obtained by calling 316-268-4501 or 316-268-4480.
- All stubs and plugged pipes shall be located with green plastic tape in the same manner as risers.
- Connecting to Existing Manholes:
Prior to laying sewer lines using existing stubs in existing manholes, the Contractor shall expose and verify the elevation, grade and alignment of existing stubs and notify the Engineer of any deviation from the plans. Where connection to an existing manhole that does not have an existing stub or the stub is unusable due to elevation grade or alignment, the Contractor shall bore cut into existing manhole wall to make connection using approved water stop gasket, and reshape the existing manhole invert to provide smooth flow. The cost to connecting to existing manholes is incidental to the project.
- Contractor shall provide positive drainage away from all manhole covers.
- The Contractor shall prevent any construction debris from entering the existing sanitary sewer during construction.
- The Contractor shall be responsible for maintaining continuous flow of sewage through construction. Contractors proposed method for maintaining sewage flow shall be submitted and approved by the Sewer Maintenance Division (316-268-4073) prior to starting and by-passing of sewage flows.
- Any over excavation from manhole and pipe removal shall be backfilled with AB-3 compacted to 90-95% ASTM D698.
- No shrink or swell factors have been applied to the earthwork quantities shown on this project. All earthwork quantities are based on raw surface volume comparisons.
- Excess dirt generated from installation of underground utilities is to remain on site. Overburdened to be stockpiled on Future Lot 58, Block B, directly North of proposed lift station.



Vicinity Map

SHEET INDEX

Sheet	Title
01	Titlesheet
02	Sanitary Sewer L1
03	Sanitary Sewer L1
04	Sanitary Sewer L2
05	Lift Station Site Plan
06	Lift Station Site Detail
07	Lift Station Plan
08	Lift Station Section
09	Lift Station Details
09	Online Diagram and Panel Elevation Drawing
10	Lift Station Electrical Site Plan
11	Lift Station Utility Shelter Electrical Plan
12	Wetwell Elevation Diagram And MPZ01 Panel Schedule
13	Electrical Details I
14	Electrical Details II
15	Electrical Details III
16	Electrical Details IV
17	Forced Main 1 of 2
18	Forced Main 2 of 2
19	Pre-Cast SS MH
20	MH Frame & Cover
21	Vertical Riser
22	Erosion Control Plan
23	BOC
24	Silt Fc
25	Straw Bale
26	SIP
27	SDP



Benchmarks

BENCHMARK:
CHISELED SQUARE WITH DIVOT ON THE TOP OF CONCRETE PAD, 1655' NORTH AND 888' EAST OF THE SOUTHEAST CORNER OF THE SW 1/4 OF SEC 2, T27S, R1W. ELEVATION = 1323.11 (NAVD88, G12A)

BENCHMARK:
CHISELED SQUARE WITH DIVOT ON THE EAST SIDE OF CONCRETE GATE FOUNDATION FOR 4900 W 21ST ST N, WICHITA, KS. ELEVATION = 1323.85 (NAVD88, G12A)



924 N. Main
Wichita, KS 67203
(316) 264-8008

GARVER
© 2018 GARVER, LLC
THIS DOCUMENT, ALONG WITH THE IDEAS AND DESIGNS CONVEYED HEREIN, SHALL BE CONSIDERED INSTRUMENTS OF PROFESSIONAL SERVICE AND ARE PROPERTY OF GARVER, LLC. ANY USE, REPRODUCTION, OR DISTRIBUTION OF THIS DOCUMENT, ALONG WITH THE IDEAS AND DESIGN CONTAINED HEREIN, IS PROHIBITED UNLESS AUTHORIZED IN WRITING BY GARVER, LLC OR EXPLICITLY ALLOWED IN THE GOVERNING PROFESSIONAL SERVICES AGREEMENT FOR THIS WORK.



BY	DESCRIPTION	DATE	REV.



City of Wichita, KS
Project #: 468-85239
OCA: 744452
Emerald Bay 3rd
Sanitary Sewer Plans

Titlesheet

JOB NO.: 17264861
DATE: .
DESIGNED BY: .
DRAWN BY: .

BAR IS ONE INCH ON ORIGINAL DRAWING
0 1"
IF NOT ONE INCH ON THIS SHEET, ADJUST SCALES ACCORDINGLY.

DRAWING NUMBER

SHEET NUMBER **01** OF **28**

File: L:\2017\17264863 - Emerald Bay 3rd Improvements\Drawings\C3D\Sanitary Sewer Lift Station\Sanitary Sewer Title Sheet.dwg Last Save: 2/28/2018 3:06 PM Last saved by: E.J.Glover
Last plotted by: Glover, Eric J. Plot Style: --- Plot Scale: 1:2.5849 Plot Date: 4/4/2018 10:21 AM Plotter used: None