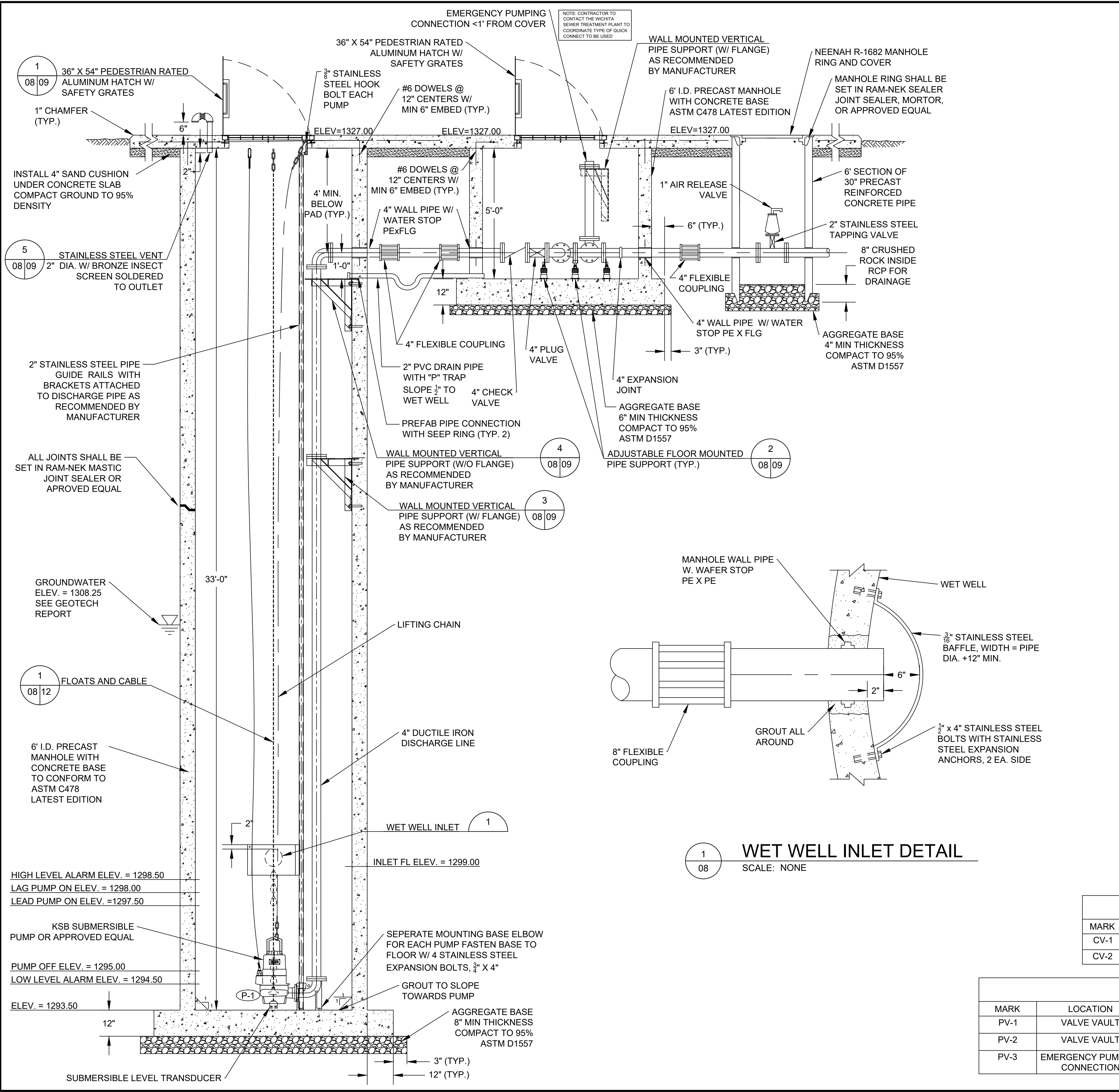
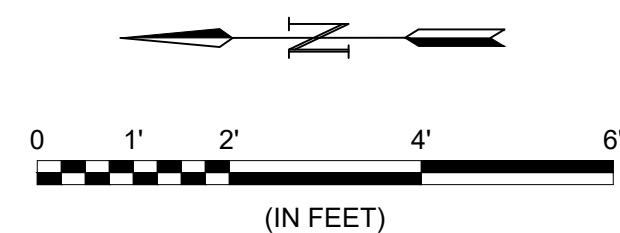
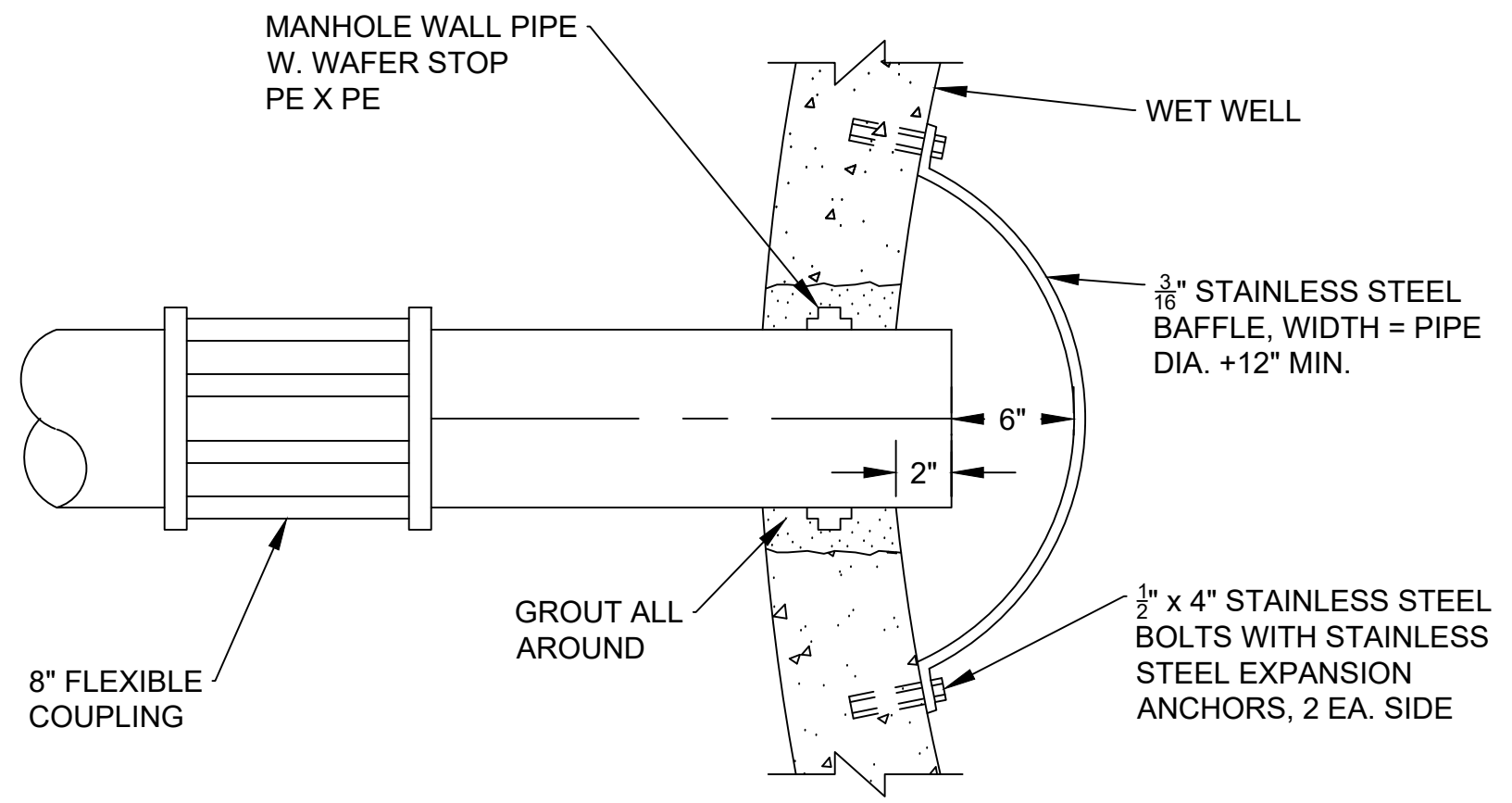




© 2017 GARVER, LLC
 THIS DOCUMENT, ALONG WITH THE IDEAS AND DESIGNS CONVEYED HEREIN, SHALL BE CONSIDERED INSTRUMENTS OF PROFESSIONAL SERVICE AND ARE PROPERTY OF GARVER, LLC. ANY USE, REPRODUCTION, OR DISTRIBUTION OF THIS DOCUMENT, ALONG WITH THE IDEAS AND DESIGN CONTAINED HEREIN, IS PROHIBITED UNLESS AUTHORIZED IN WRITING BY GARVER, LLC OR EXPLICITLY ALLOWED IN THE GOVERNING PROFESSIONAL SERVICES AGREEMENT FOR THIS WORK.



- NOTES:
- THE PRICE BID FOR FURNISHING AND INSTALLING THE LIFT STATION, INCLUDING THE WET WELL, VALVE VAULT, AND OTHER MISCELLANEOUS APPURTENANCES, SHALL INCLUDE ALL COSTS FOR FURNISHING AND INSTALLING THE LIFT STATION AS INDICATED IN THE PLANS COMPLETE IN PLACE AND IN OPERATION. THIS PRICE SHALL INCLUDE THE COST OF CONSTRUCTING AND/OR INSTALLING COMPACTED SUBGRADE, CONCRETE PAVEMENT, ELECTRICAL CONDUIT, ELECTRICAL WIRING, DISCONNECT SWITCH, PUMP CONTROLS, ELECTRICAL POWER SUPPLY, FINISHED GRADING, LANDSCAPING, FENCING, AND ANY OTHER INCIDENTALS NECESSARY TO COMPLETE THE WORK AND PLACE THE LIFT STATION INTO SATISFACTORY OPERATION. THE PRICE BID SHALL INCLUDE ALL SANITARY SEWER PIPE AND FORCE MAIN EXTENDED OUTSIDE THE SLAB AS SHOWN IN THE SITE PLAN AND DETAILS.
 - ALL INTERIOR PIPING SHALL BE CEMENT LINED AND EPOXY COATED DUCTILE IRON PIPE.
 - PIPE PENETRATIONS THROUGH THE WET WELL, VALVE VAULT, AND CONCRETE PAD SHALL BE GROUTED WATERTIGHT WITH NON-SHRINK GROUT AND WATER STOP GASKETS AS REQUIRED.
 - THE CONTRACTOR SHALL PERFORM AN EXFILTRATION TEST ON THE COMPLETE WET WELL. THE WET WELL SHALL BE TESTED INDIVIDUALLY BY SECURELY PLUGGING ALL INLET AND OUTLET PIPES. THE WET WELL SHALL BE FILLED TO ITS FULL DEPTH AND THEN OBSERVED FOR AT LEAST SIX HOURS. EXFILTRATION LOSS FROM THE 6-FOOT DIAMETER WET WELL SHALL NOT EXCEED THE RATE OF 1.70 GALLONS PER FOOT OF WET WELL DEPTH PER DAY. IF EXFILTRATION EXCEEDS THE MAXIMUM LIMITS, THE CONTRACTOR SHALL REPAIR THE LEAKS AND DEFECTS, AND THEN RETEST.
 - THE CONTRACTOR SHALL SUPPORT ALL PIPING INSIDE THE WET WELL AND VALVE VAULT AS REQUIRED.
 - ALL HARDWARE INSIDE THE WET AND VALVE VAULT, INCLUDING BUT NOT LIMITED TO THE GUIDE BAR, HOIST CHAIN, CHAIN CATCH, HOOKS, NUTS, BOLTS, ETC. SHALL BE STAINLESS STEEL. NYLON ROPE WILL NOT BE ALLOWED IN THE WET WELL.
 - WET WELL AND VALVE VAULT DESIGN SHALL BE SUBJECT TO THE SAME DESIGN REQUIREMENTS AS PRECAST MANHOLES.
 - THE INTERIOR OF THE WET WELL SHALL BE COATED WITH A SANITARY SEWER MANHOLE COATING PER SPECIFICATION SECTION 09 97 26.13
 - BACKFILL UNDER AND AROUND THE WET WELL AND UNDER THE VALVE VAULT AND PAD SHALL BE A LOW VOLUME CHANGE MATERIAL COMPACTED TO 95% ASTM D-1557.
 - THE CONTRACTOR SHALL COORDINATE WITH WESTAR ENERGY AND KANSAS GAS SERVICE TO EXTEND ELECTRIC AND GAS SERVICES TO THE PUMP STATION SITE. THE CONTRACTOR SHALL VERIFY THE ELECTRICAL AND GAS SERVICE COSTS & REQUIREMENTS PRIOR TO BIDDING. THE CONTRACTOR SHALL ALLOW A MINIMUM OF 3 WEEKS FOR THESE SERVICES TO BE COMPLETED. ALL COST INCURRED TO EXTEND THESE SERVICES TO THE SITE SHALL BE INCIDENTAL TO OTHER ITEMS IN THE PROJECT.
 - THE CONTRACTOR SHALL VERIFY ALL REQUIREMENTS AND DIMENSIONS OF THE GENERATOR PAD WITH THE GENERATOR SUPPLIER PRIOR TO CONSTRUCTION.
 - NO ELECTRICAL CONNECTIONS WILL BE ALLOWED WITHIN THE WET WELL.
 - CONTACT THE CITY OF WICHITA SEWER TREATMENT PLANT AT (316) 303-8701 PRIOR TO LIFT STATION START-UP.
 - THE CONTRACTOR SHALL BE RESPONSIBLE FOR ALL PERMIT AND REVIEW FEES.
 - THE UTILITY SHELTER SHALL BE PAINTED TO BLEND IN WITH THE SURROUNDINGS AND PAINTED A COLOR THAT IS SELECTED AND APPROVED BY THE OWNER.



1
08
WET WELL INLET DETAIL
SCALE: NONE

PUMP SCHEDULE						
MARK	TYPE	GPM	HEAD (FT)	HP	RPM	VOLT./PHASE
P-1	SUBMERSIBLE	91	40	6.5	1160	460/3
P-2	SUBMERSIBLE	91	40	6.5	1160	460/3

CHECK VALVE SCHEDULE						
MARK	LOCATION	TYPE	STATUS	SIZE	FITTINGS	OPERATOR
CV-1	VALVE VAULT	V608	NEW	4"	FLANGE	LEVER & SPRING
CV-2	VALVE VAULT	V608	NEW	4"	FLANGE	LEVER & SPRING

PLUG VALVE SCHEDULE						
MARK	LOCATION	TYPE	STATUS	SIZE	FITTINGS	OPERATOR
PV-1	VALVE VAULT	V405	NEW	4"	FLANGE	GEAR ACTUATOR WITH 2" NUT
PV-2	VALVE VAULT	V405	NEW	4"	FLANGE	GEAR ACTUATOR WITH 2" NUT
PV-3	EMERGENCY PUMPING CONNECTION	V405	NEW	4"	MJ	GEAR ACTUATOR WITH 2" NUT

REV.	DATE	DESCRIPTION	BY

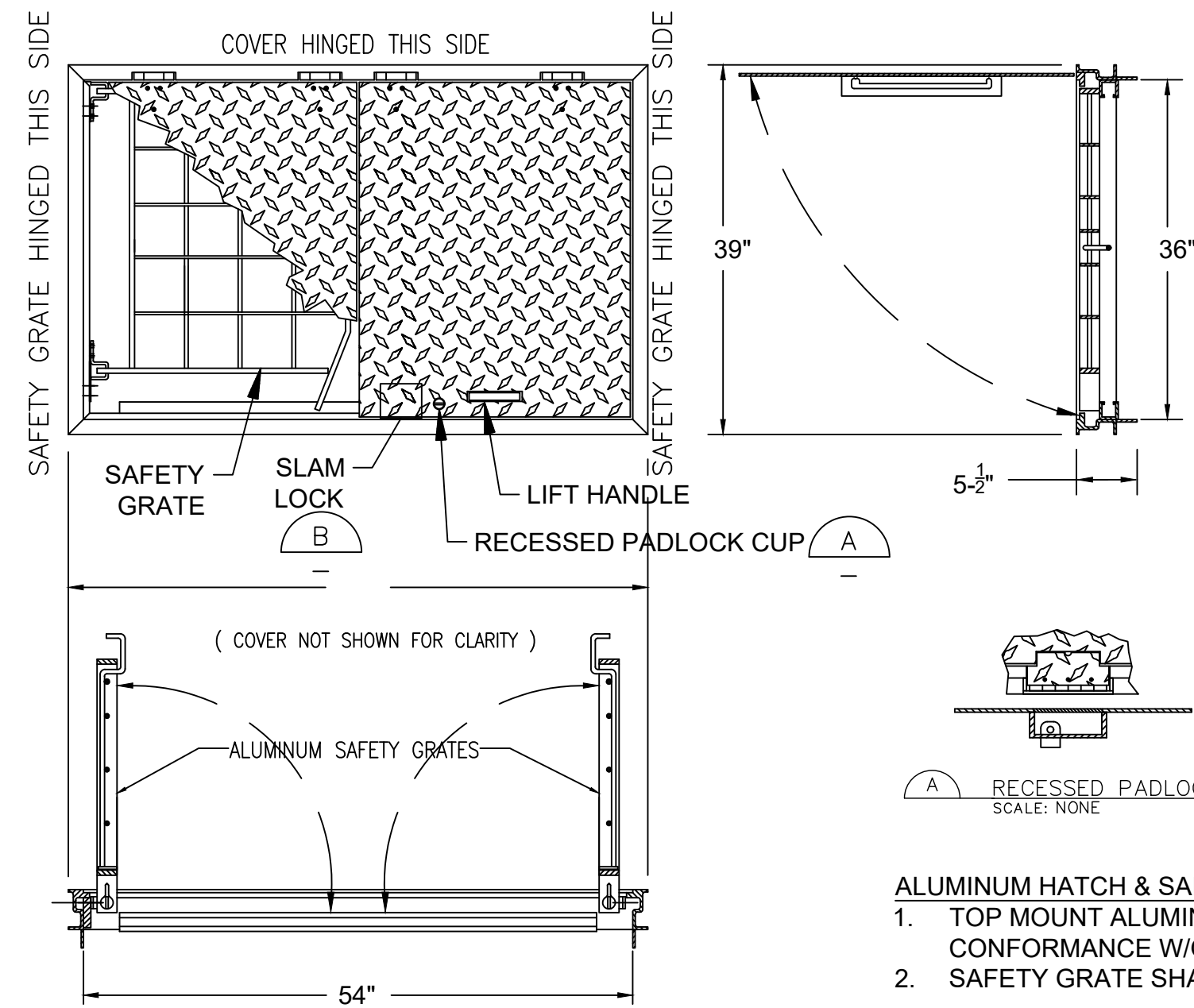
CITY OF WICHITA, KS
 WICHITA, KANSAS
 EMERALD BAY LIFT STATION

LIFT STATION PLAN

JOB NO.: 17264861
 DATE:
 DESIGNED BY: JGC
 DRAWN BY: JCH

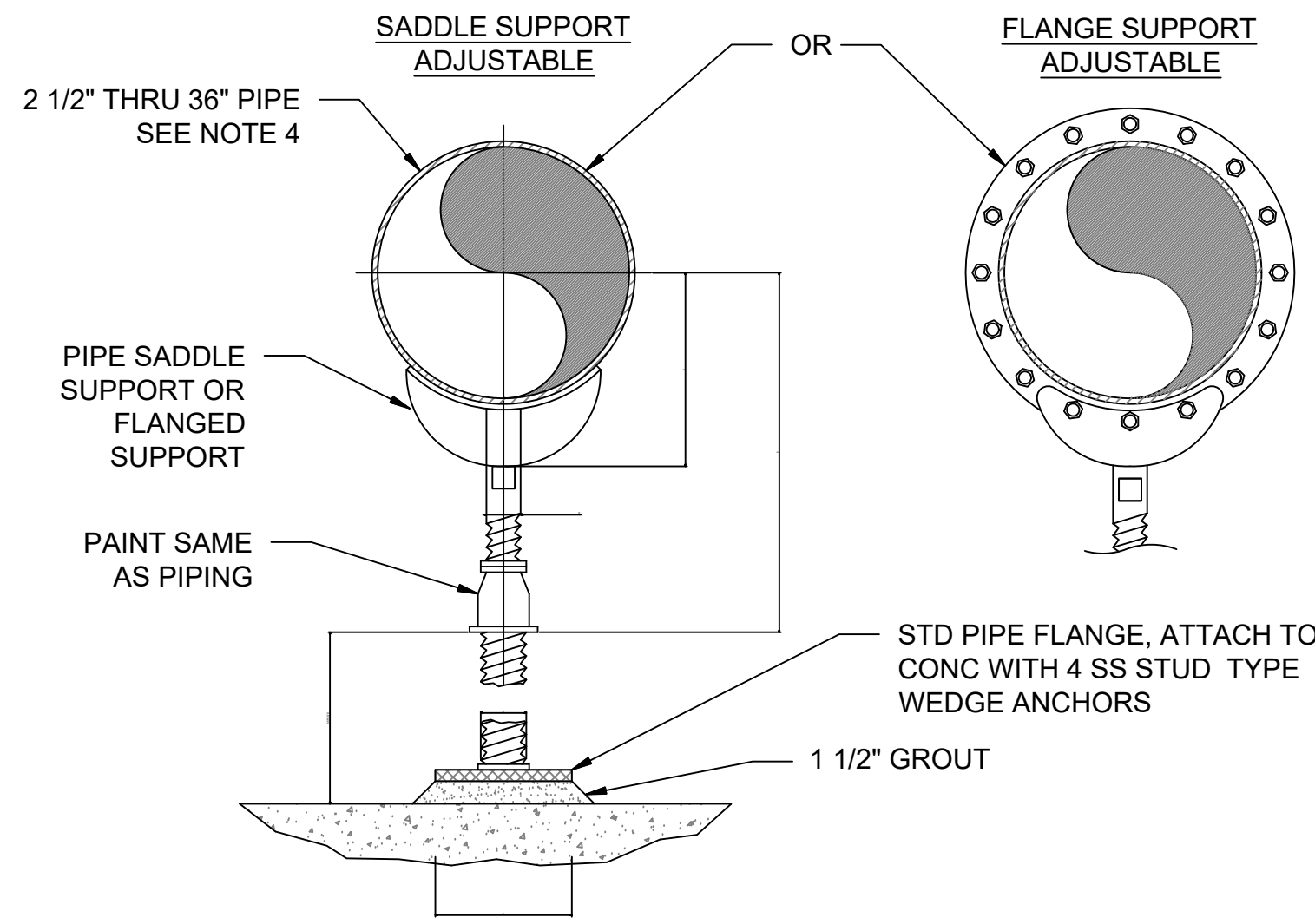
BAR IS ONE INCH ON ORIGINAL DRAWING
 IF NOT ONE INCH ON THIS SHEET, ADJUST SCALES ACCORDINGLY.

DRAWING NUMBER



- ALUMINUM HATCH & SAFETY GRATE SPECIFICATIONS:**
1. TOP MOUNT ALUMINUM SAFETY GRATE SHALL COVER OPENING IN CONFORMANCE W/OSHA 1910.23.
 2. SAFETY GRATE SHALL HAVE A MINIMUM OF 300 PSF LOADING CAPACITY.

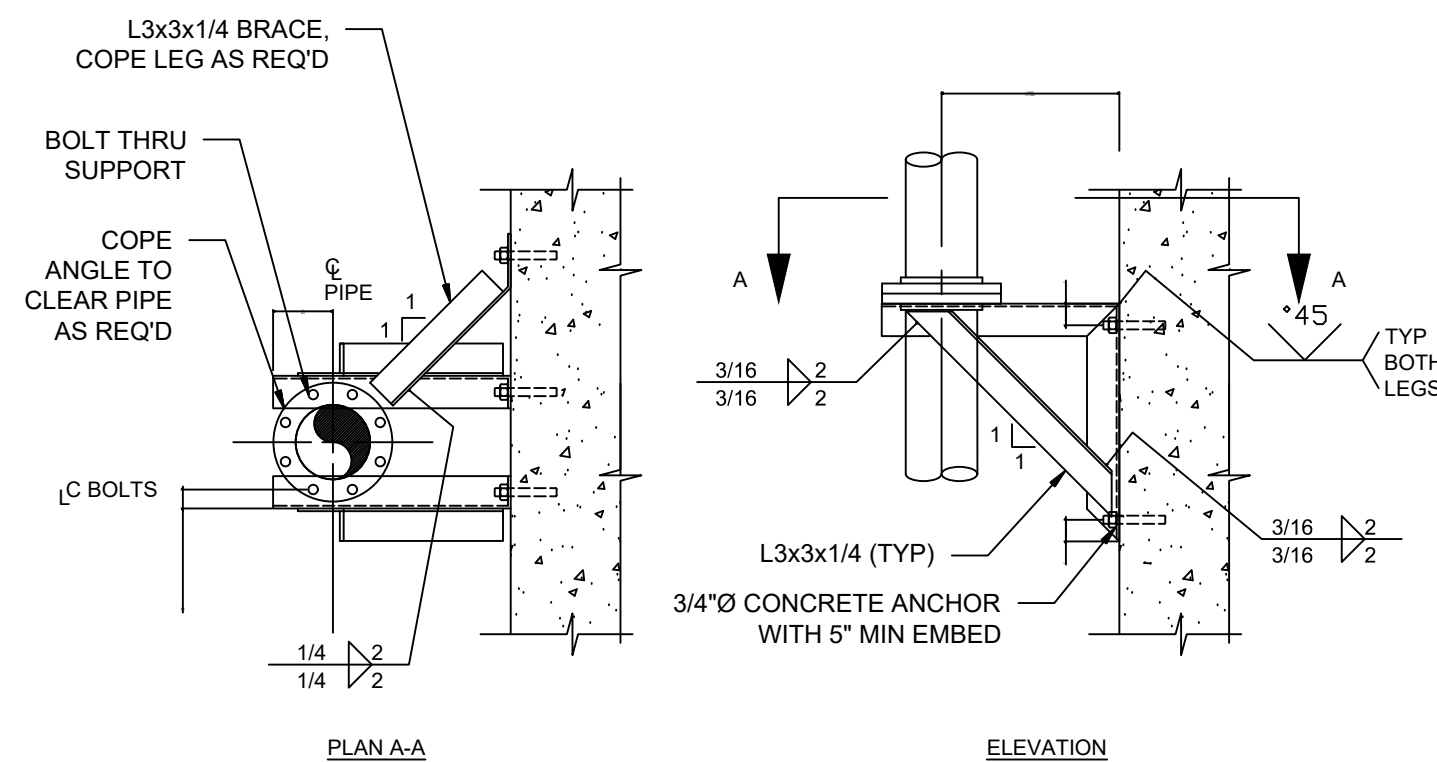
1
09 **ALUMINUM HATCH W/ SAFETY GRATE**
SCALE: NONE



PIPE SIZE	A	B	C	D	E	
					MIN	MAX
2-1/2"	2-1/2"	3-1/2"	9"	1-1/2"	8"	13"
3"	2-1/2"	3-3/4"	9"	1-1/2"	8-1/4"	13-1/4"
3-1/2"	2-1/2"	4"	9"	1-1/2"	8-1/2"	13-1/2"
4"	3"	4-1/4"	9"	2-1/2"	9-1/4"	14"
5"	3"	4-7/8"	9"	2-1/2"	10"	14-3/4"
6"	3"	5-1/2"	9"	2-1/2"	10-1/2"	15-1/4"
8"	3"	6-7/8"	9"	2-1/2"	11-3/4"	15-1/2"
10"	3"	8-1/2"	9"	2-1/2"	13-1/2"	18-1/4"
12"	3"	9-15/16"	9"	2-1/2"	15"	19-3/4"
14"	4"	10-15/16"	11"	3"	16-1/4"	20-3/4"
16"	4"	12-3/8"	11"	3"	17-3/4"	22-1/4"
18"	6"	13-7/8"	13-1/2"	3-1/2"	19-1/2"	24"
20"	6"	15-3/8"	13-1/2"	3-1/2"	21"	25-1/2"
24"	6"	17-15/16"	13-1/2"	4"	23-3/4"	28-1/4"
30"	6"	21-5/16"	13-1/2"	4"	27"	31-1/2"
32"	6"	22-1/2"	13-1/2"	4"	28-1/4"	32-3/4"
36"	6"	24-1/2"	13-1/2"	4"	30-1/4"	34-3/4"

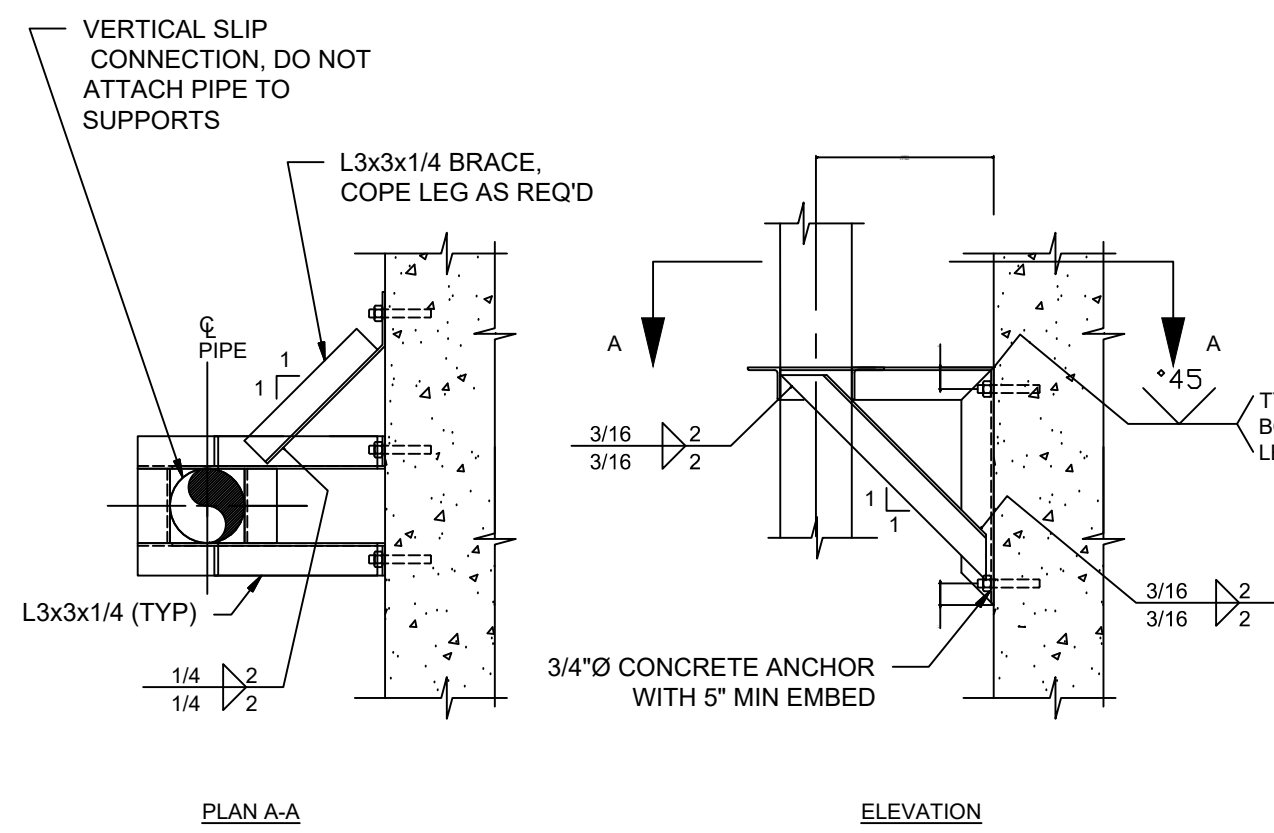
- NOTES:**
1. PROVIDE HALF ROUND RIGID INSULATION AND INSULATION PROTECTION SHIELD WHERE PIPING IS INSULATED
 2. PROVIDE NEOPRENE WAFFLE INSULATION PAD, SIMILAR TO MASON TYPE "W" OR KORFUND 40, UNDER SUPPORT FOOT WHEN PIPING IS ISOLATED OR SUPPORT IS ADJACENT TO MECHANICAL EQUIPMENT.
 3. FOR BASE, HEIGHT AND FLANGE DIMENSIONS, SEE TABLE
 4. USE 2 1/2" SUPPORTS FOR PIPES LESS THAN 2 1/2"Ø

2
09 **ADJUSTABLE FLOOR MOUNTED PIPE SUPPORT**
SCALE: NONE



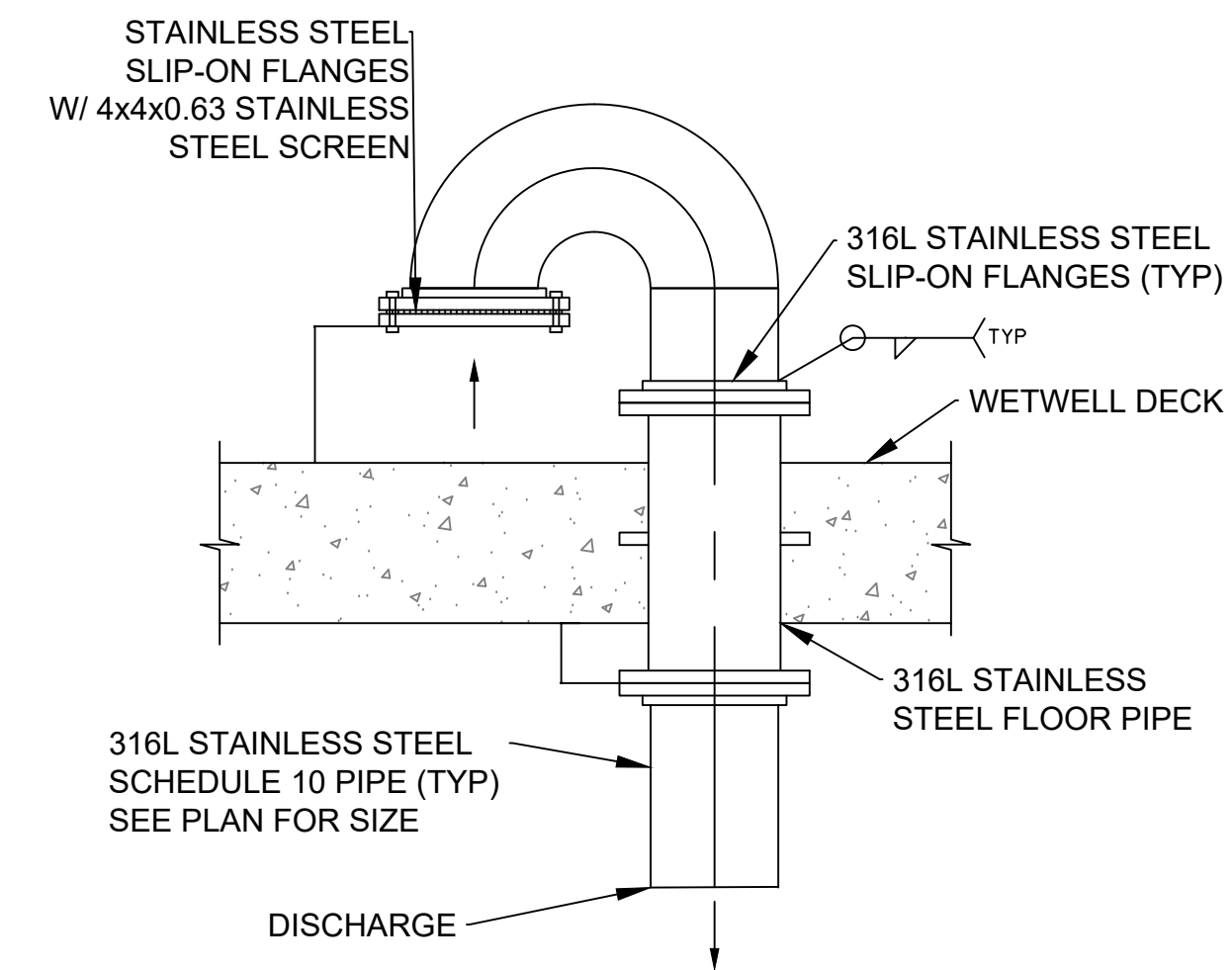
- NOTES:**
1. PIPE SUPPORT IS TO BE USED FOR 4"Ø AND LARGER PIPE.
 2. MAXIMUM ALLOWABLE VERTICAL LOAD = 900 POUNDS.
 3. IF SUPPORT IS SUBMERGED OR LOCATED BELOW THE TOP OF WALL IN WATER BEARING STRUCTURE, MATERIAL FOR ANCHOR BOLTS AND STRAP SHALL BE STAINLESS STEEL. IN ALL OTHER AREAS, MATERIAL FOR ANCHOR BOLTS AND STRAP SHALL BE HOT-DIP GALVANIZED STEEL UNLESS OTHERWISE INDICATED ON THE DRAWINGS.

3
09 **WALL MOUNTED VERTICAL PIPE SUPPORT (W/ FLANGE)**
SCALE: NONE



- NOTES:**
1. PIPE SUPPORT IS TO BE USED FOR 4"Ø AND LARGER PIPE.
 2. IF SUPPORT IS SUBMERGED OR LOCATED BELOW THE TOP OF WALL IN WATER BEARING STRUCTURE, MATERIAL FOR ANCHOR BOLTS AND STRAP SHALL BE STAINLESS STEEL. IN ALL OTHER AREAS, MATERIAL FOR ANCHOR BOLTS AND STRAP SHALL BE HOT-DIP GALVANIZED STEEL UNLESS OTHERWISE INDICATED ON THE DRAWINGS.

4
09 **WALL MOUNTED VERTICAL PIPE SUPPORT (W/O FLANGE)**
SCALE: NONE



5
09 **STAINLESS STEEL VENT DETAIL**
SCALE: NONE



© 2017 GARVER, LLC
THIS DOCUMENT, ALONG WITH THE IDEAS AND DESIGNS CONVEYED HEREIN, SHALL BE CONSIDERED INSTRUMENTS OF PROFESSIONAL SERVICE AND ARE PROPERTY OF GARVER, LLC. ANY USE, REPRODUCTION, OR DISTRIBUTION OF THIS DOCUMENT, ALONG WITH THE IDEAS AND DESIGN CONTAINED HEREIN, IS PROHIBITED UNLESS AUTHORIZED IN WRITING BY GARVER, LLC OR EXPLICITLY ALLOWED IN THE GOVERNING PROFESSIONAL SERVICES AGREEMENT FOR THIS WORK.

BY	DESCRIPTION	DATE	REV.



CITY OF WICHITA, KS
WICHITA, KANSAS
EMERALD BAY LIFT STATION

LIFT STATION DETAILS

JOB NO.: 17264861
DATE:
DESIGNED BY: JCH
DRAWN BY: JCH

BAR IS ONE INCH ON ORIGINAL DRAWING
IF NOT ONE INCH ON THIS SHEET, ADJUST SCALES ACCORDINGLY.

DRAWING NUMBER

SHEET NUMBER **09** OF **28**