

SANITARY SEWER - Private Force Main  
to serve

**Lots 1-6, Blk 1, North Industrial Park 2nd**

2929 N Ohio Ave.

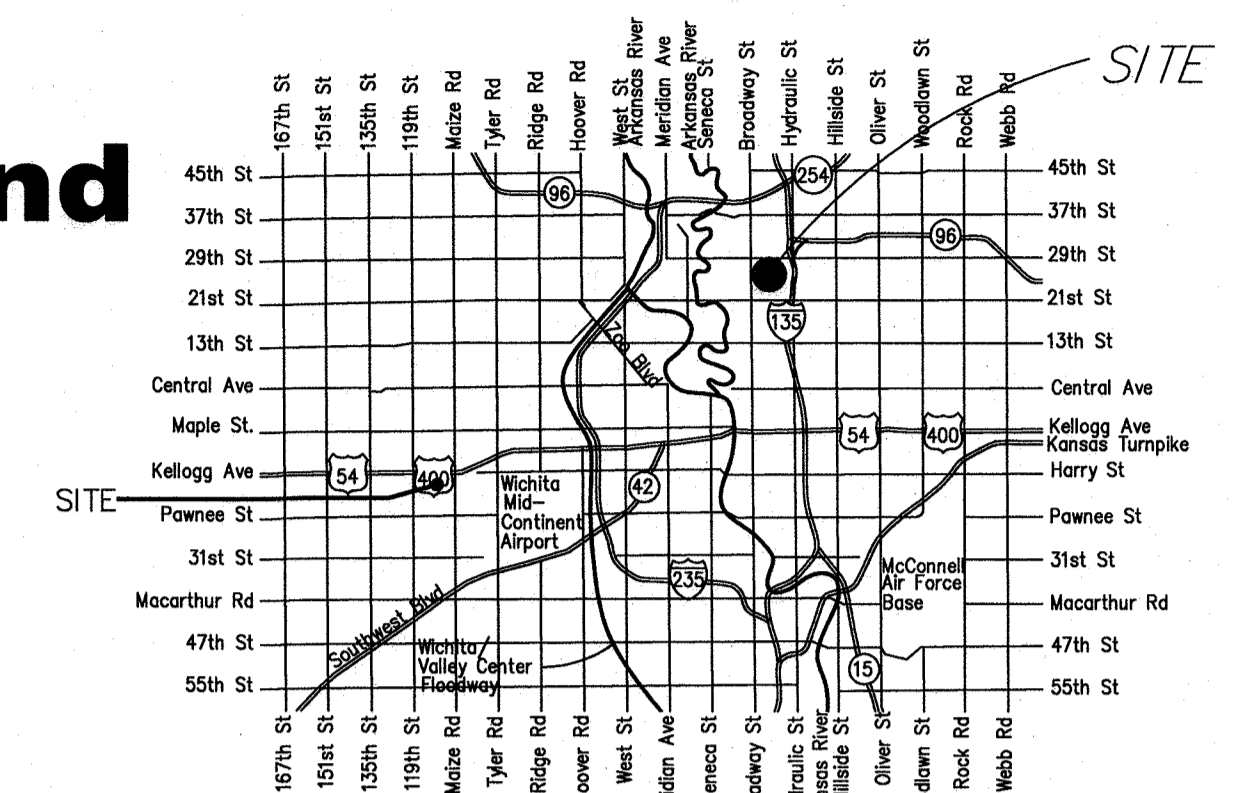
Dold Foods

CITY OF WICHITA, KANSAS

Gary Janzen, P.E. City Engineer

Project Number  
2340 PPS (184011)

29th Street N.



Vicinity Map

Sheet Index

- 1.0 Cover Sheet
- 2.0-2.2 Plan and Profile Sheet
- 3.0 Precast SS MH Detail
- 3.1 Manhole Frame & Cover Detail
- 4.0-4.4 Erosion Control BMP Details  
(attached or available on City's website)
- 5.0 Plat

T. Mason - City of Wichita, Inspector  
Release Date: 4/10/2018  
: 4/11/2018 apr

**AS BUILTS**

Contractor: McCullough Excavation  
Inspector: Matt Perez  
Date: 3-9-18

**KEMILLER ENGINEERING PA**  
117 E. Lewis, Wichita, KS 67202 (316)264-0242

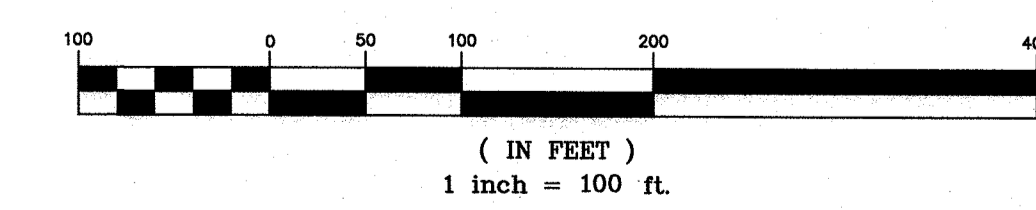
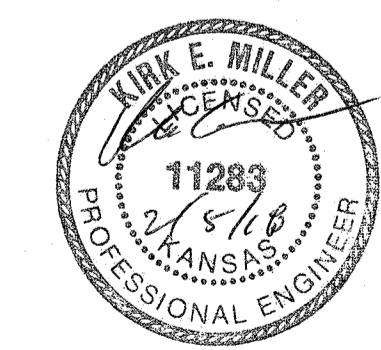
APPROVED AS NOTED  
BY WICHITA PUBLIC WORKS  
ENGINEERING DIVISION

Engineering *Julianne Kellman* 2-6-18  
Utilities *[Signature]* 2-7-18

NOTE TO CONTRACTORS

Inspection and testing for this project is to be provided by a Licensed Consulting Engineering Firm under contract with the Owner/Developer. Said inspection to be in accordance with the City of Wichita standard construction engineering practices and certified by a Licensed Professional Engineer in the state of Kansas. No work shall be performed by the Contractor without such inspection nor shall any work be commenced without written authorization by City Engineering. All Construction and Materials shall comply with the current City of Wichita Specifications and Standards and Special Provisions. (on file and available at Wichita.gov).

An approved copy of these plans signed by City staff are required on-site.



January 2018

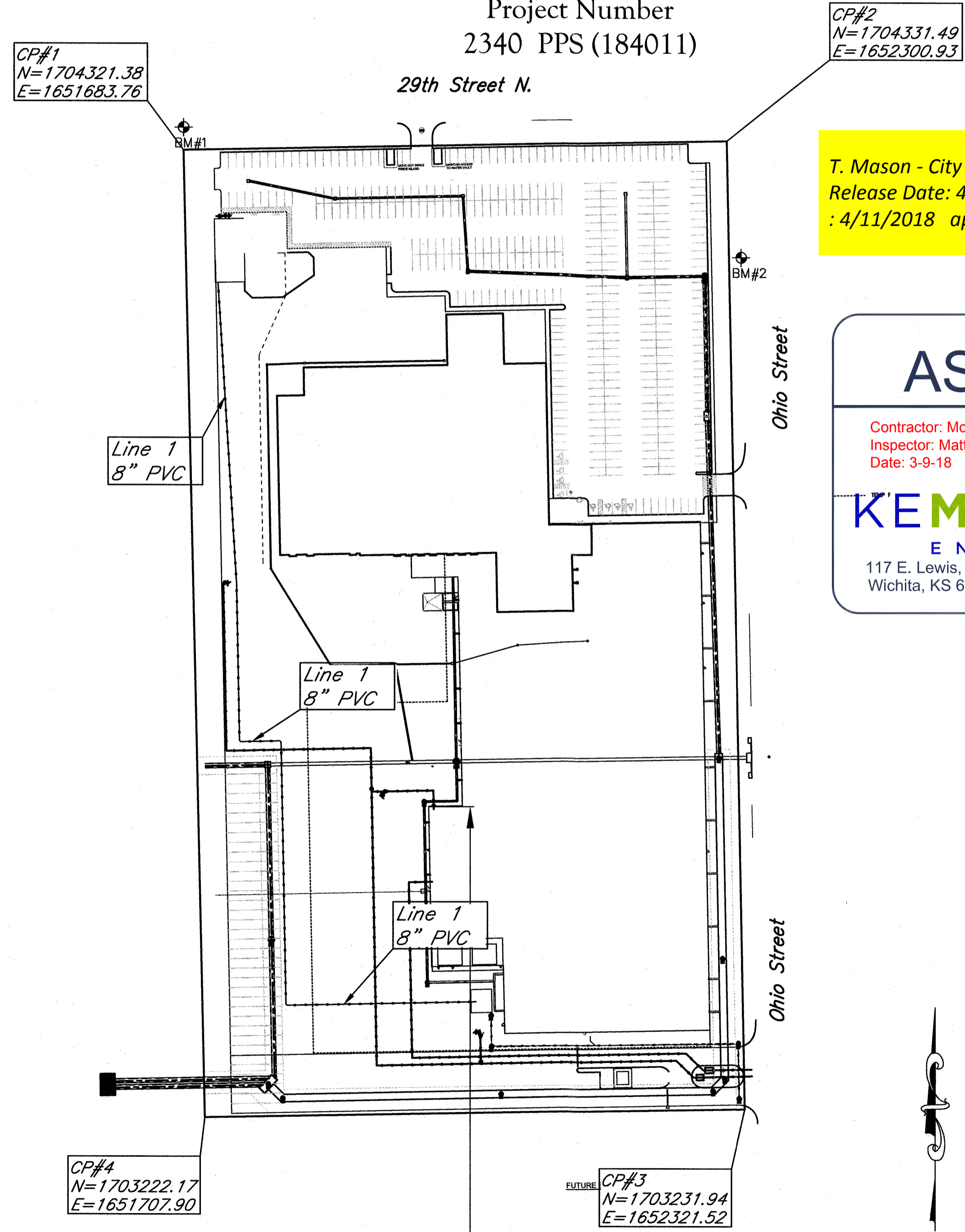
GENERAL NOTES:

1. The Contractor shall comply with all applicable safety regulations. All construction shall be completed following current City Standard Specifications and Special Provisions.
2. Contractor will be required to provide notice to utility companies a minimum of seventy-two (72) hours prior to any excavation, as follows:  
Kansas One-Call 687-2470  
The Contractor must notify the following in case of an emergency:  
AT&T 1-800-246-9464  
Black Hills Energy 1-800-694-8989  
City of Wichita Water & Sewer 1-316-219-8921  
City of Wichita Stormwater 1-316-268-4090  
City of Wichita Traffic 1-316-268-4034  
Cox Communications 1-888-249-3530  
Kansas Gas Service 1-888-482-4950  
Westar Energy 1-800-544-4857
3. Utility service lines, poles, etc. are to be adjusted as necessary by others prior to construction unless the plans specifically call for their adjustment by the Contractor or unless the plans specifically identify a utility to be adjusted by its owner during construction. Existing utilities and their location, as shown on the plans, represent the best information obtainable for design. The Contractor will be required to work around existing utilities within the right-of-way which do not conflict with proposed construction.
4. Rubble from the removal of miscellaneous structures and excess excavation which is to be wasted shall be disposed of on sites to be provided by the Contractor. These sites shall be approved by the Engineer as to suitability, appearance and site location. Locations, in the opinion of the Engineer, that will leave an unsightly appearance will not be approved. All disposal sites must be approved by the Kansas Department of Health and Environment. Material either stockpiled or disposed of in a flood plain will require a Kansas State Board of Agriculture permit. Any material dumped in waters of the United States or wetlands is subject to U.S. Corps. of Engineers permitting regulations. Any material buried or stockpiled beyond approved construction limits will require additional archaeological investigations unless buried in a previously approved borrow location.
5. Trees and shrubs in public right-of-way which are in direct conflict with proposed new construction shall be removed by the Contractor with the City Engineer's approval. Trees and shrubs which are not in direct conflict with proposed new construction shall be saved and protected from damage.
6. The Contractor shall give all property owners and/or tenants of developed property abutting the construction of this project a minimum of ten (10) days notice prior to start of construction.
7. The Contractor shall be responsible for preserving property irons. The Contractor will be required to re-establish any property irons which are damaged or destroyed by his construction operations. Such irons shall be re-established by a licensed land surveyor in accordance with state laws.
8. The Engineering Division shall field locate water valves one time during construction when requested by the Contractor. It shall be the Contractor's responsibility to preserve such field locations during the construction process. Water valves, valve boxes or fire hydrants damaged during construction shall be repaired by Contractor at his own expense. Valve boxes and water meters within the project limits shall be adjusted to match final grades by the contractor.
9. The Contractor shall notify the inspecting engineer and Tom Mason at 316-268-4574 with the City of Wichita with the anticipated construction start date and notify them of project completion. Staking and inspection for this project will be the responsibility of the Contractor.
10. If traffic will be impacted by construction, a traffic control plan must be submitted and approved by the City Traffic Engineer, Brian Coon at traffic@wichita.gov before construction can begin. The Contractor shall be responsible for all traffic control measures to facilitate construction. All construction zone markings and signage shall conform to the latest version of the Manual on Uniform Traffic Control Devices (MUTCD) as published by the US Dept. of Transportation, Federal Highway Administration. All costs associated with construction markings and signage shall be the Contractors responsibility.
11. All elevations shown are NAVD 88.
12. All areas disturbed during construction that will not be under proposed pavement shall be restored to match existing conditions.
13. Any sidewalk, drive approach, curb, or street pavement removed to construct project must have a pavement cut permit and be replaced by the City contractor. Permits can be obtained by calling 316-268-4501 or 316-268-4480.
14. All applicable fees (tap, equity, in lieu of & main benefit) must be paid before any connections can be made on this project. Quotes can be obtained on fees by calling 316-268-4555.
15. City Maintenance of sanitary sewer mains ends at last structure within the easement or right-of-way.
16. All stubs and capped pipes shall be located with green plastic tape in the same manner as risers.
17. Connecting to Existing Manholes: Prior to laying sewer lines using existing stubs in existing manholes, the Contractor shall expose and verify the elevation, grade and alignment of existing stubs and notify the Engineer of any deviation from the plans. Where the stub is unusable due to elevation grade or alignment, the Contractor shall remove the stub and plug the hole, and reshape the existing manhole invert to provide smooth flow. Where connecting to an existing manhole that does not have an existing stub, the Contractor shall core cut into existing manhole wall to make connection using approved water stop gasket, and reshape the existing manhole invert to provide smooth flow. The cost to connecting to existing manholes is incidental to the project.
18. Contractor shall limit the extent of trench open overnight and weekends to less than 50 feet.
19. Contractor shall provide positive drainage away from all manhole covers.
20. The Contractor shall prevent any construction debris from entering the existing sanitary sewer during construction.
21. The Contractor shall be responsible for maintaining continuous flow of sewage through construction. Contractors proposed method for maintaining sewage flow shall be submitted and approved by the Sewer Maintenance Division (316-268-4073) prior to starting and by-passing of sewage flows.
22. Any over excavation from manhole and pipe removal shall be backfilled with AB-3 compacted to 90-95% ASTM D698.
23. The Contractor shall protect from damage and support existing utilities through construction as approved by the utility owner and the Engineer at the contractors expense.

Benchmarks

BM#1  
"□" Chiseled on  
Top of Curb  
Elevation=1316.23 (NAVD88)

BM#2  
"X" Chiseled on Top of Curb  
Elevation=1314.24 (NAVD88)



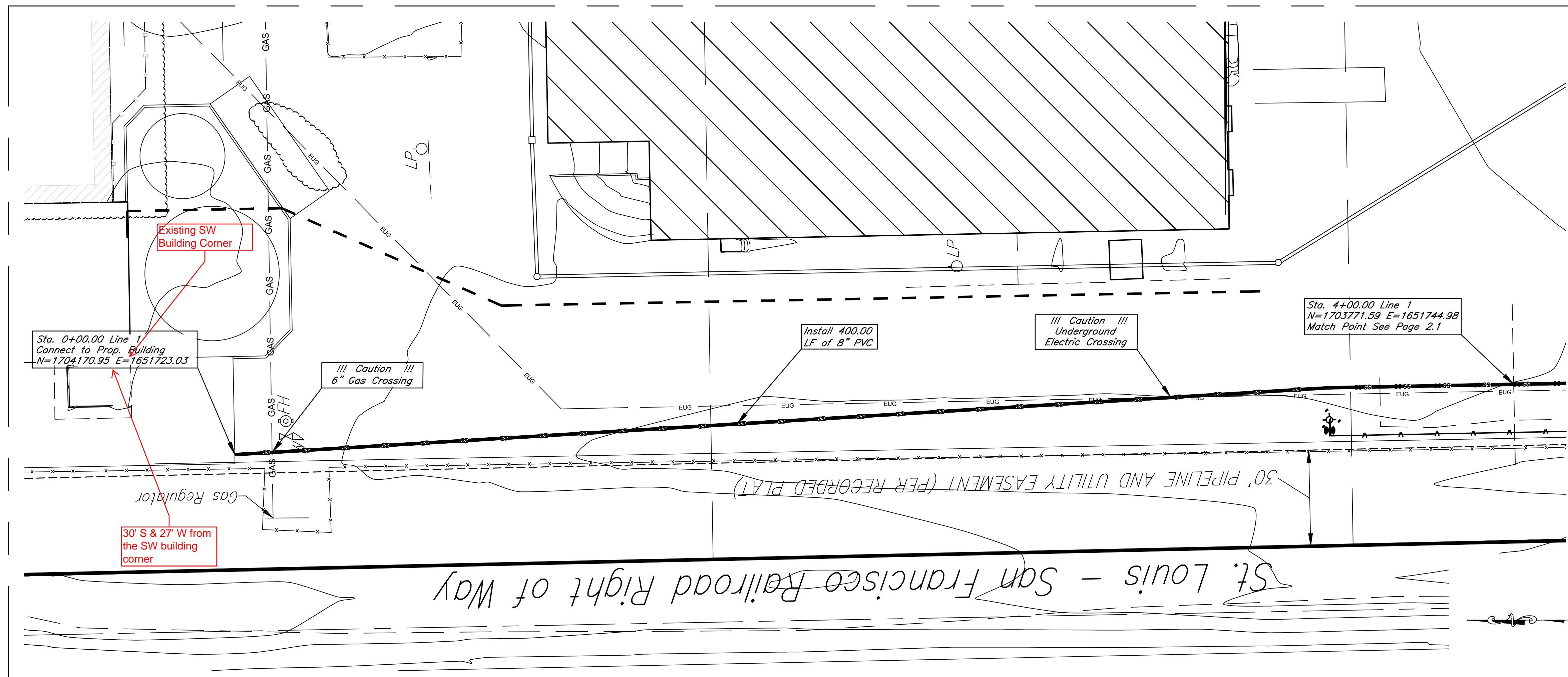
# AS BUILTS

Contractor: McCullough Excavation  
 Inspector: Matt Perez  
 Date: 3-9-18



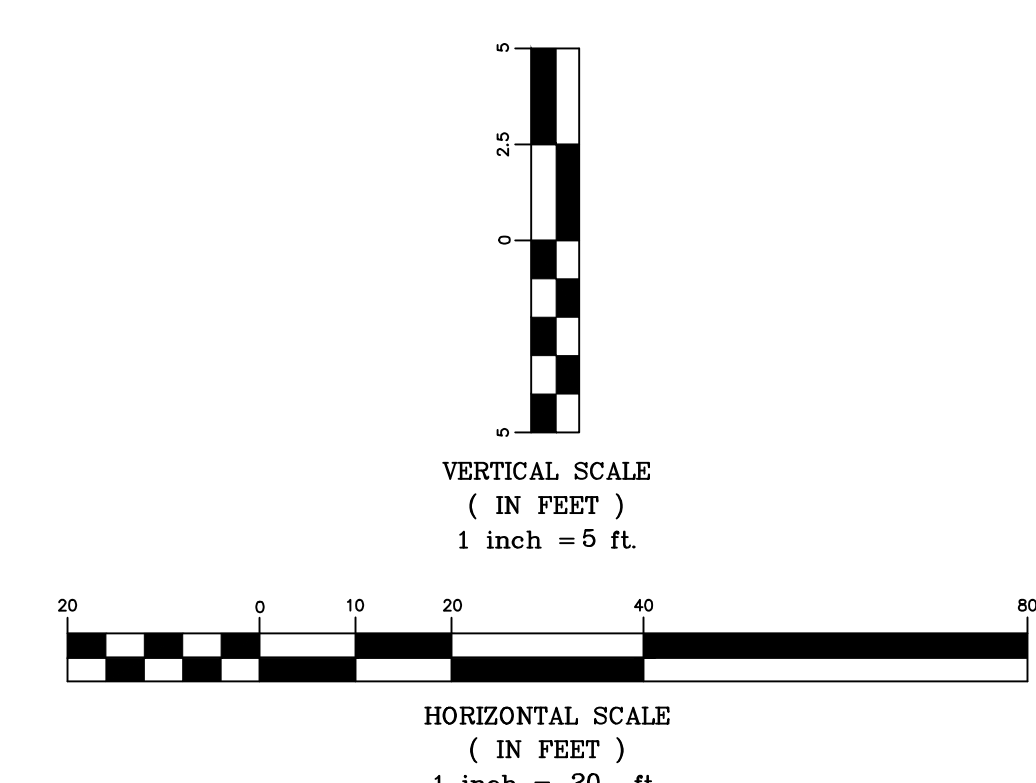
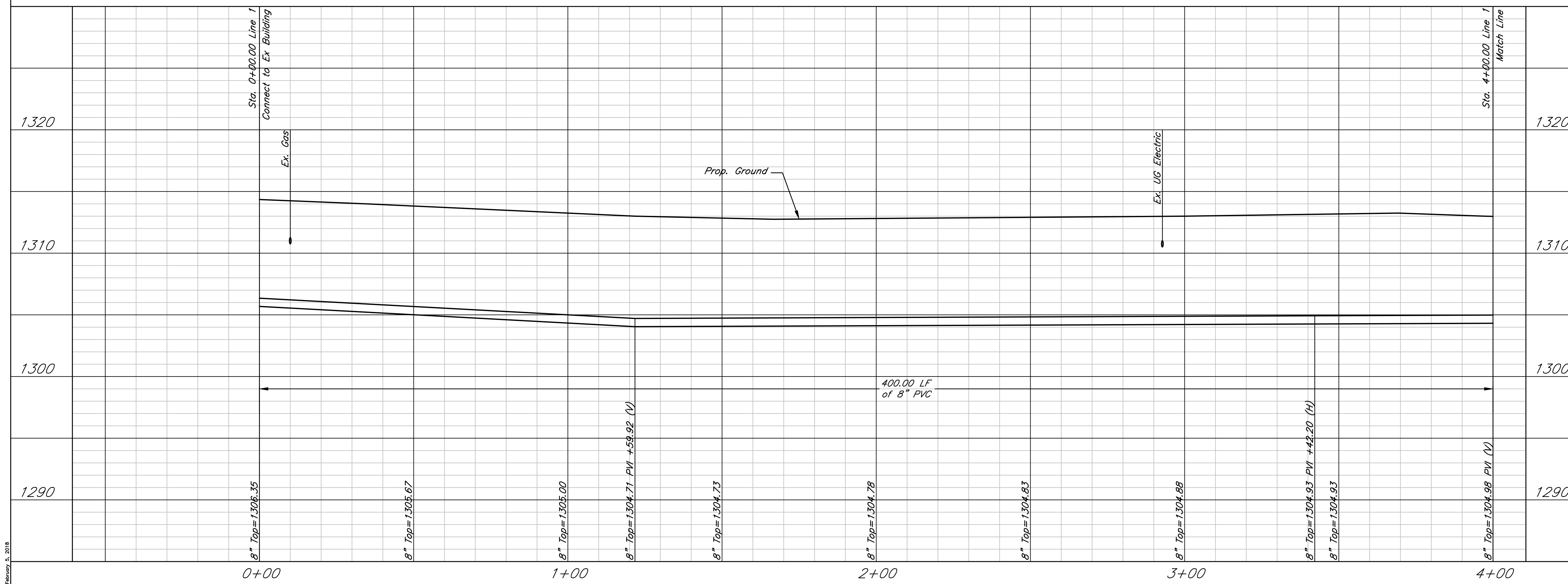
117 E. Lewis,  
 Wichita, KS 67202

(316)264-0242



*St. Louis - San Francisco Railroad Right of Way*

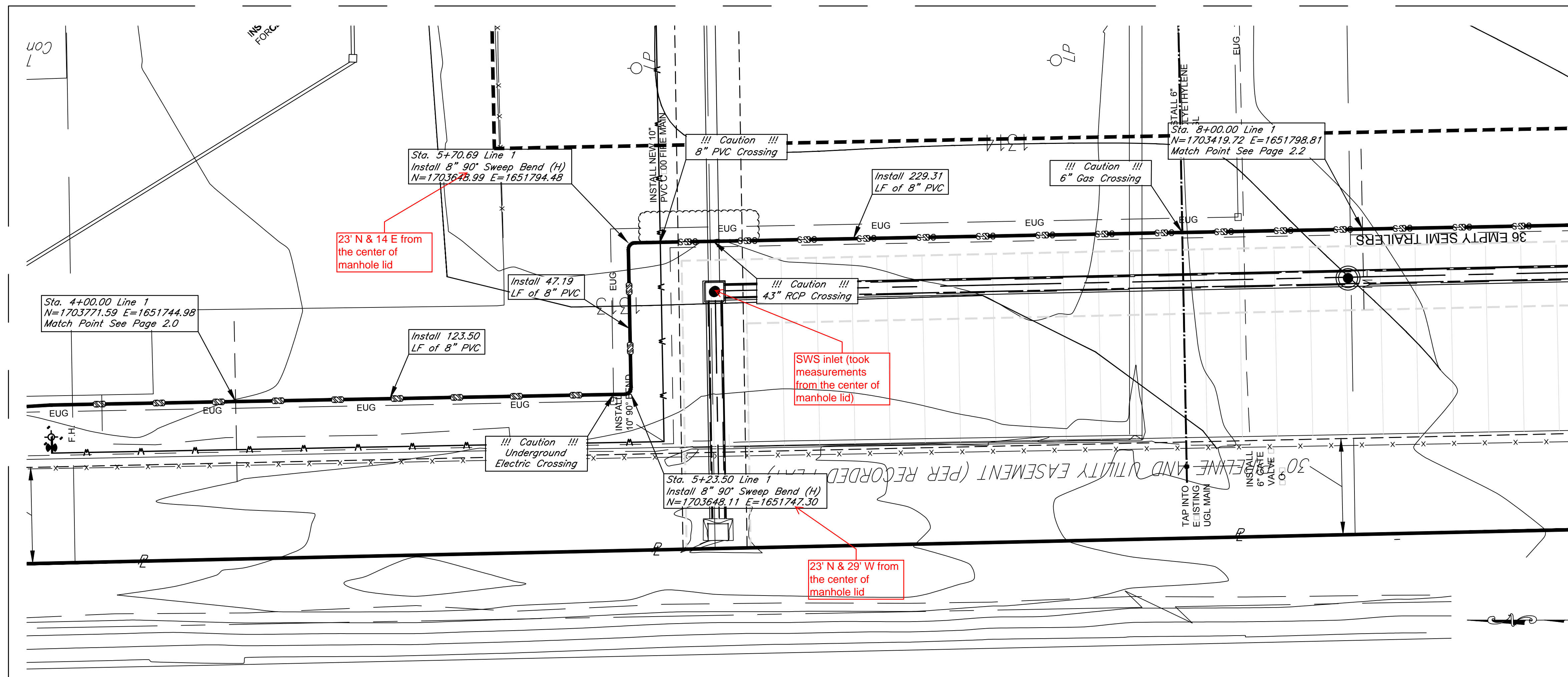
Line 1



Dold Foods  
 Plan and Profile - Line 1  
 Wichita, Kansas

	PROJECT NUMBER			SHEET <b>2.0</b>
	KEM NO. 17151	FILE	DATE 01/2018	
DESIGN KM	DRAWN AHS	REVISED		

March 8, 2018



CERTA-LOK® 90° SWEEP BENDS						
C/I L MALE x C/I L MALE						
SIZE (IN)	WT. (LBS)	OD (IN)	W (IN)	PART NO.	WT. (LBS)	OD (IN)
2"	250	2.40	2.375	16-1/16	16-1/16	710889
3"	250	6.40	3.500	23-1/8	23-1/8	710896
4"	250	12.70	4.500	30-1/4	30-1/4	710902
4" HP	315	14.90	4.500	30-1/4	30-1/4	706547
6"	250	31.00	6.625	42	42	710919
6" HP	315	45.30	6.625	42	42	706554
8"	250	59.00	8.625	46-5/8	46-5/8	710926
10"	200	120.00	10.750	71-3/8	71-3/8	705267
12"	200	165.00	12.750	71-3/16	71-3/16	705281
14"	160	217.00	14.000	78-5/8	78-5/8	706455
16"	200	234.00	16.000	78-5/8	78-5/8	706462

90° Sweep Bend Detail

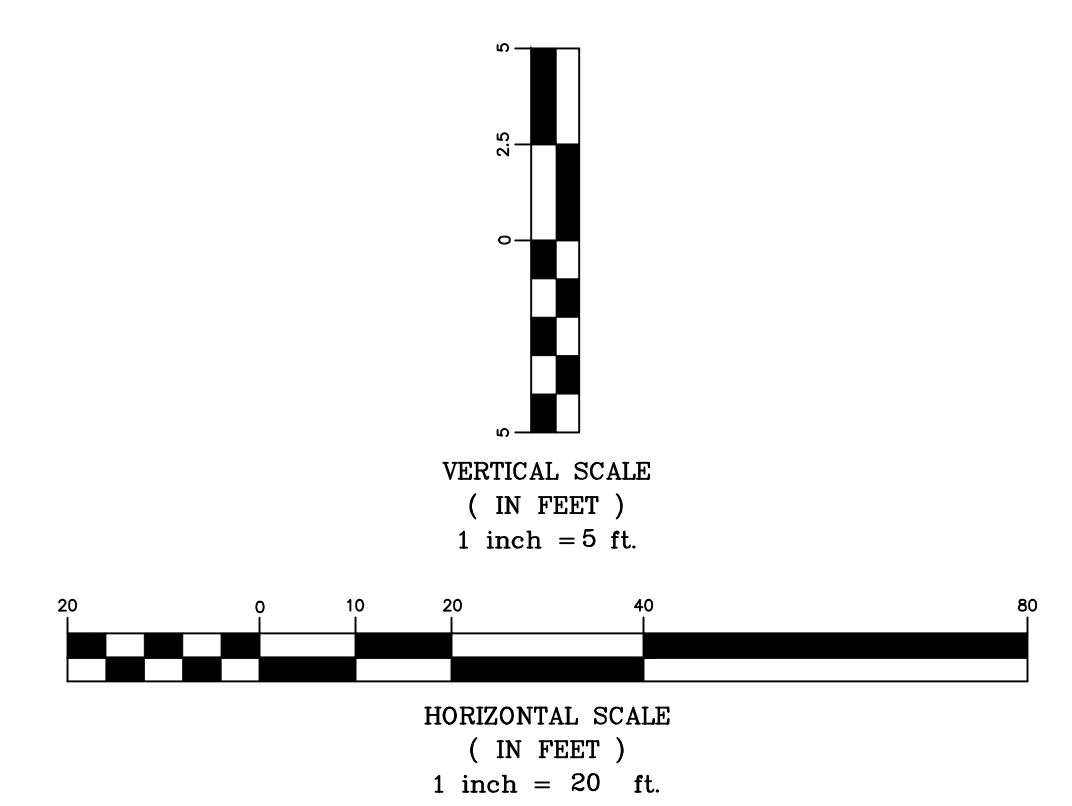
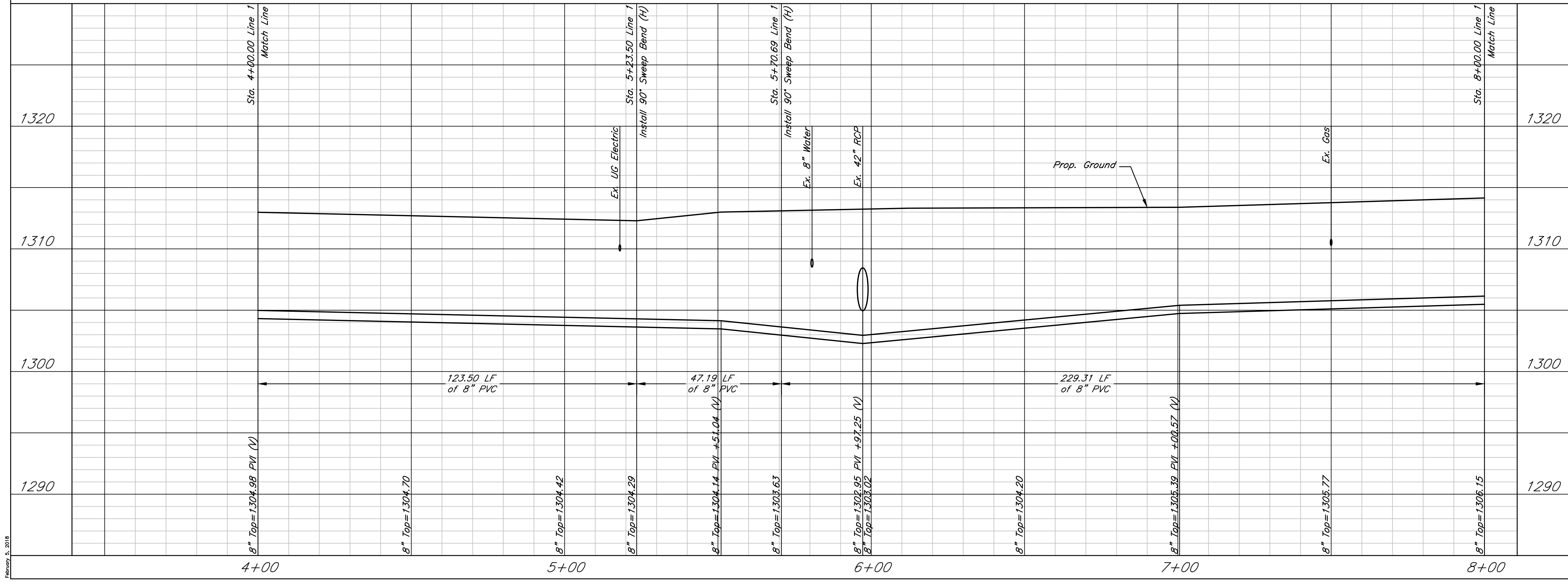
**AS BUILTS**

Contractor: McCullough Excavation  
 Inspector: Matt Perez  
 Date: 3-9-18

**KEMILLER ENGINEERING PA**

117 E. Lewis,  
 Wichita, KS 67202 (316)264-0242

Line 1



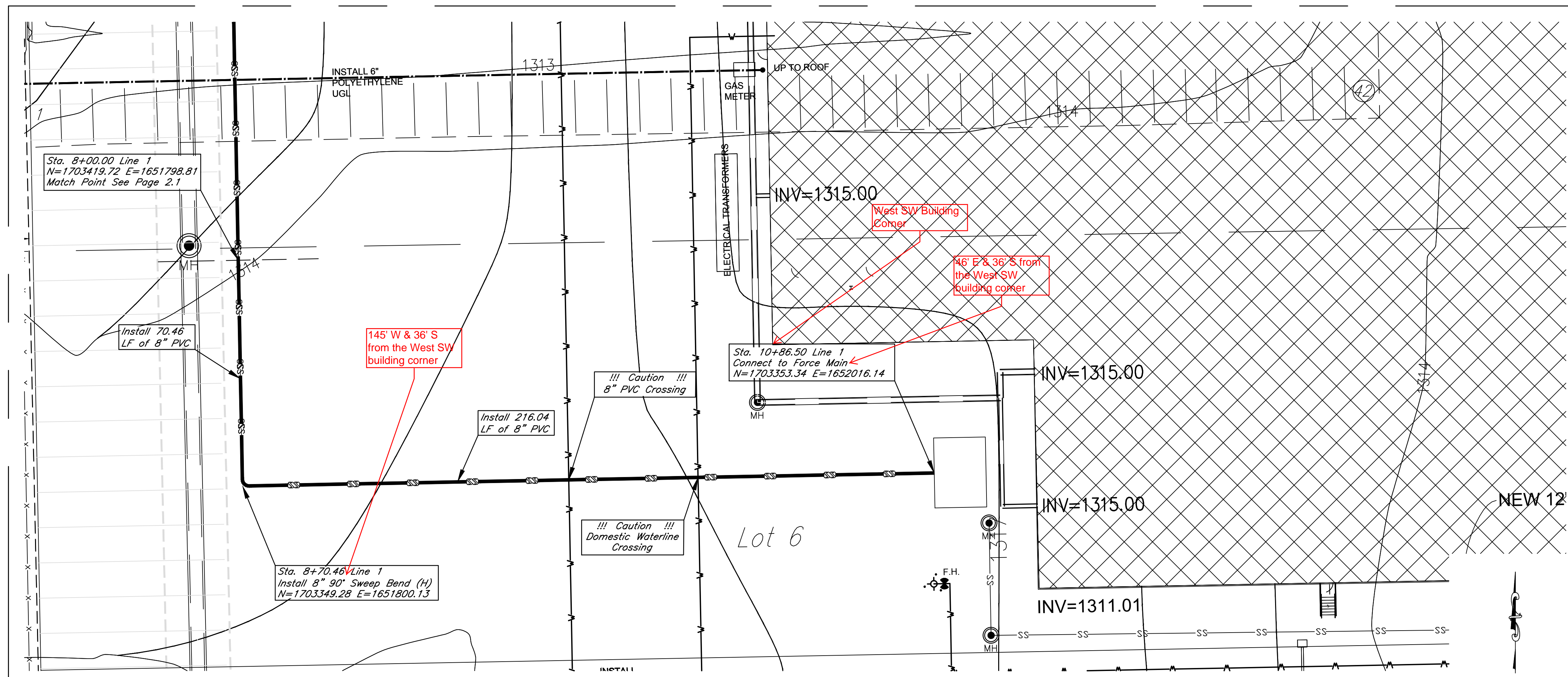
Dold Foods  
**Plan and Profile - Line 1**  
 Wichita, Kansas

PROJECT NUMBER

KEM NO. 17151	FILE	DATE 01/2018	SHEET
DESIGN KM	DRAWN AHS	REVISED	<b>2.1</b>

117 E. Lewis, Wichita, KS 67202 (316)264-0242

February 8, 2018



**CERTA-LOK® 90° SWEEP BENDS**

SIZE (IN.)	W/F (IN.)	W/F (IN.)	OD (IN.)	W (IN.)	W (IN.)	PART NO.
2"	250	240	2375	16-1/16	16-1/16	710889
3"	250	440	3300	23-1/8	23-1/8	710896
4"	250	1270	4500	30-1/4	30-1/4	710902
4" HP	315	1490	4500	30-1/4	30-1/4	704547
6"	250	3100	6625	42	42	710919
6" HP	315	4530	6625	42	42	704554
8"	250	5900	8435	46-5/8	46-5/8	710926
10"	200	12000	10750	71-3/8	71-3/8	705267
12"	200	16500	12750	71-13/16	71-13/16	705281
14"	160	21700	14000	78-5/8	78-5/8	704455
16"	200	23400	16000	78-5/8	78-5/8	704462

90° Sweep Bend Detail

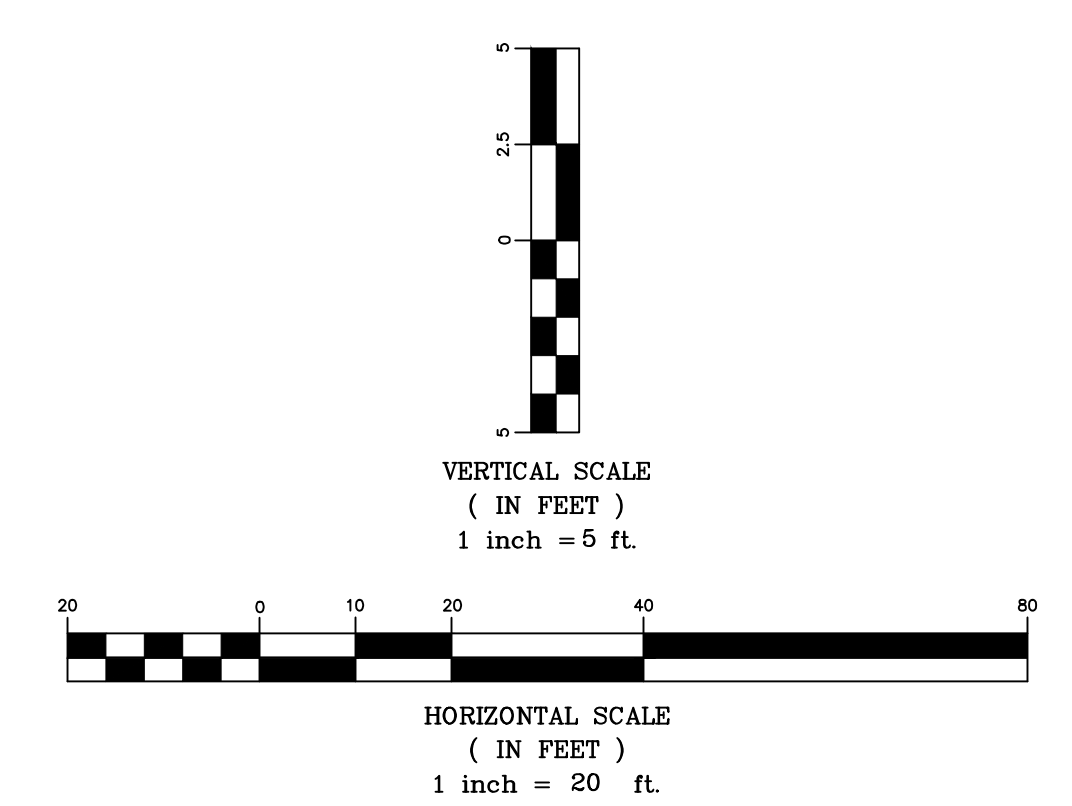
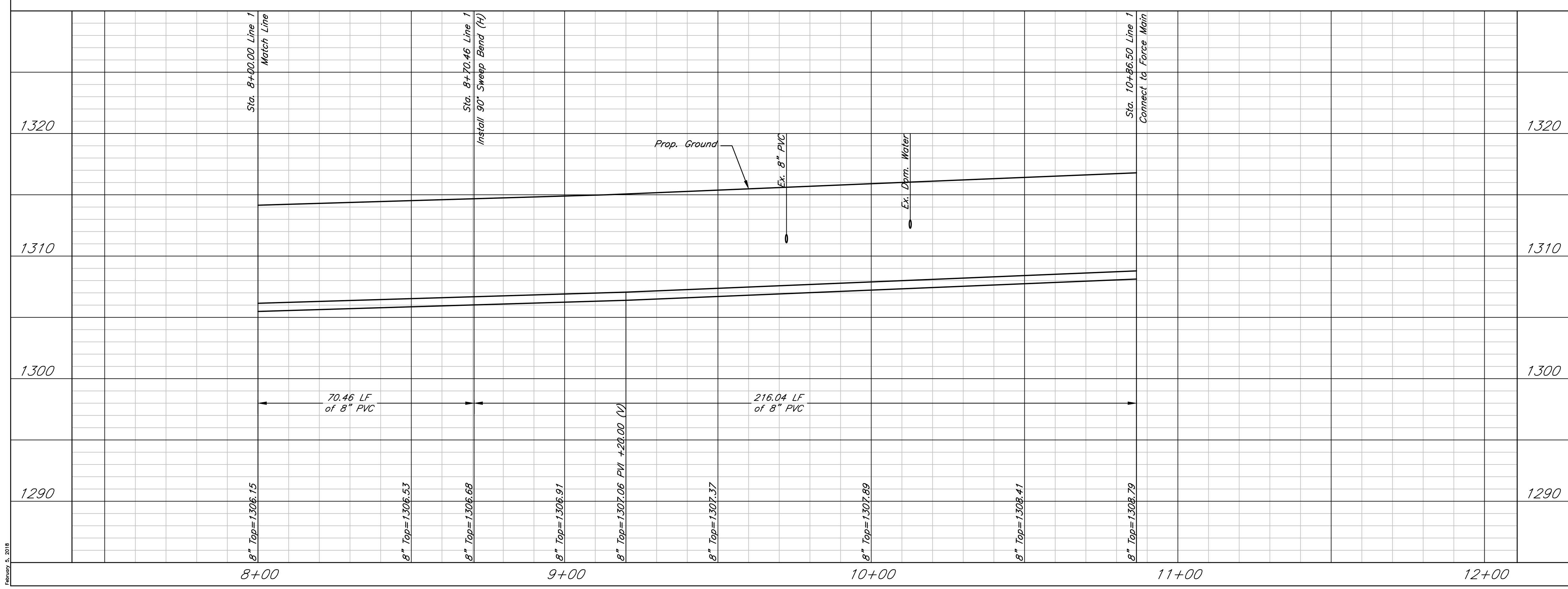
**AS BUILTS**

Contractor: McCullough Excavation  
 Inspector: Matt Perez  
 Date: 3-9-18

**KEMILLER ENGINEERING PA**

117 E. Lewis,  
 Wichita, KS 67202

(316)264-0242

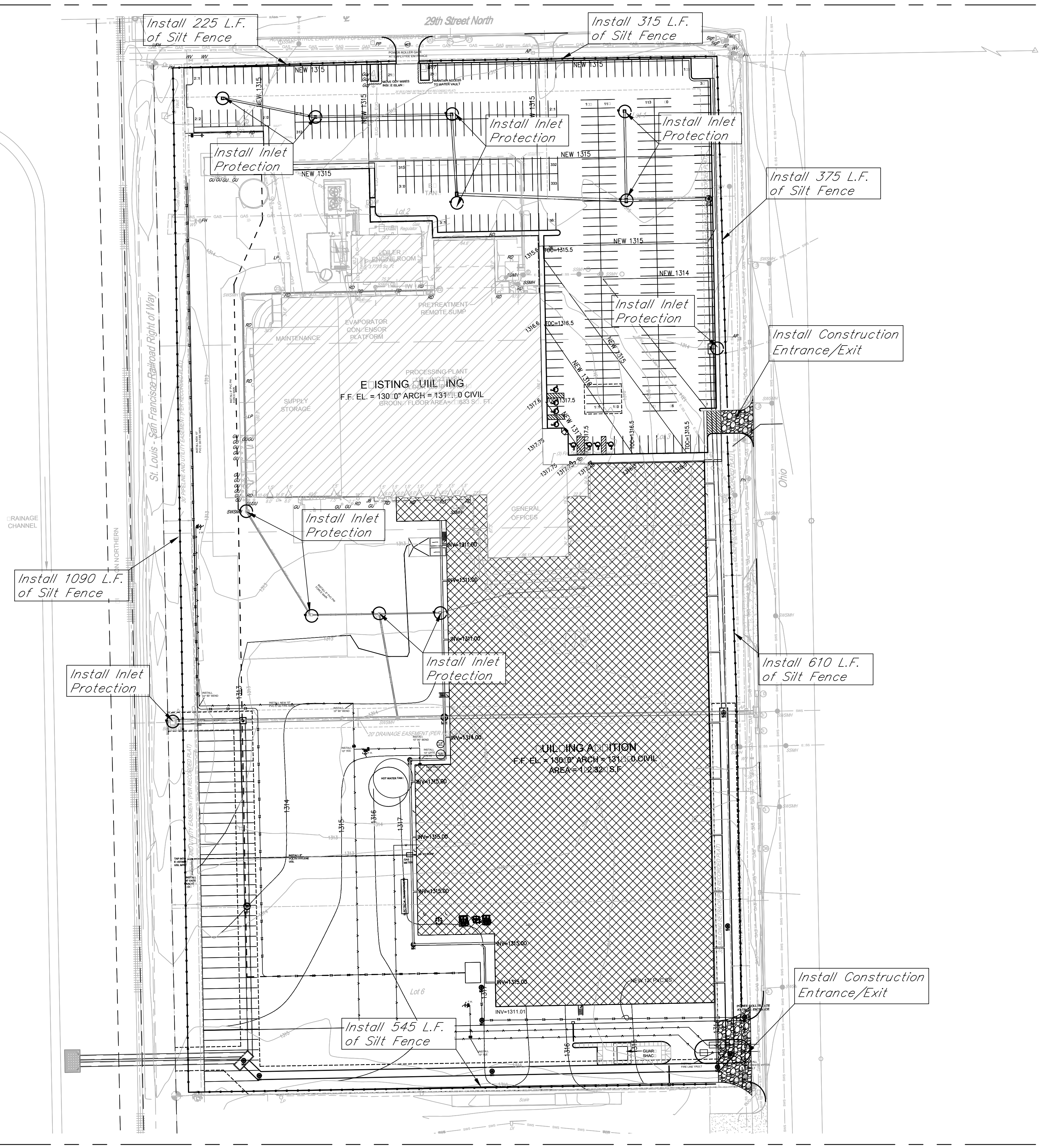


Dold Foods  
**Plan and Profile - Line 1**  
 Wichita, Kansas

PROJECT NUMBER

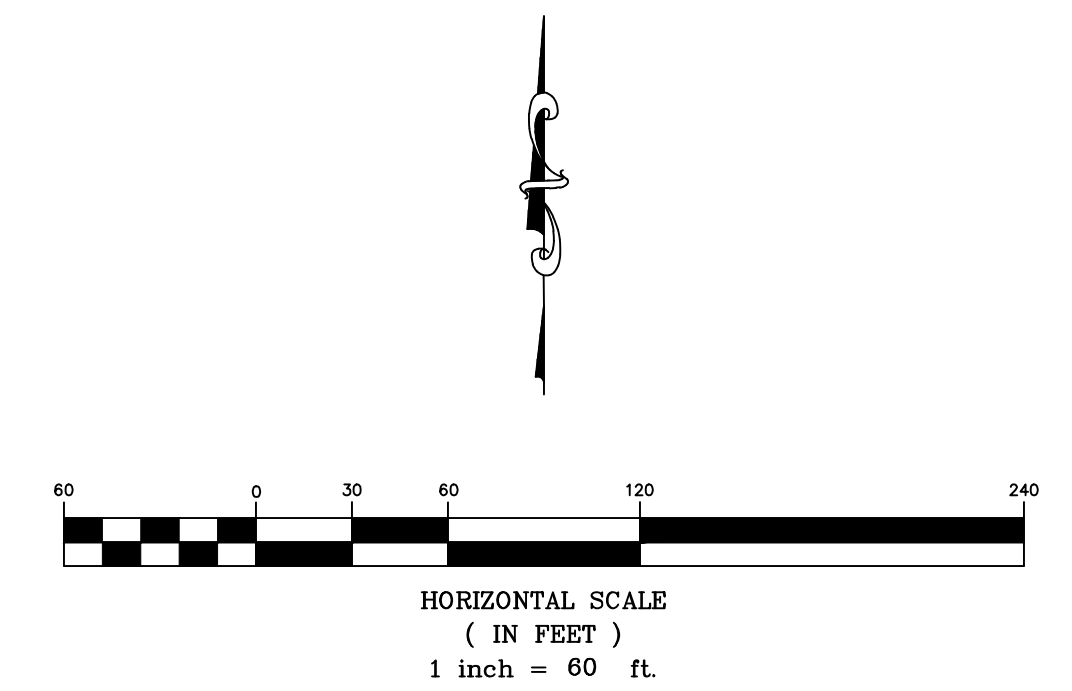
KEM NO. 17127	FILE	DATE 01/2018	SHEET 2.2
DESIGN KM	DRAWN AHS	REVISED	

117 E. Lewis, Wichita, KS 67202 (316)264-0242



- General Notes:**
1. The BMP's shown on this sheet are considered minimum standards. Whenever sediment enters the streets, storm sewers, ditches, or ponds, contractor will install additional BMP's, as needed, to correct the problem.
  2. The soil erosion BMP's shown hereon must be in place at all times during construction until such time as the site is re-established with paving or grass.
  3. Back of curb protection can include hay bale, silt fence, Curlex barrier, or approved alternate as shown on BMP standard details. This BMP must remain in place until the area between the curb and right-of-way line has been permanently stabilized.
  4. The General Contractor is responsible for the installation and maintenance per the prevention maintenance plan.
  5. Concrete trucks will be permitted to wash out only at approved locations, then maintain and clean up as conditions require, by contractor. No hazardous materials are expected to be encountered. Any spills (diesel, fuel, oil, etc.) will be cleaned up and removed immediately. Portable toilets will be supplied and maintained at various sites along the project. Disposal of sewage will be handled by a contracting firm specializing in this activity.
  6. The above mentioned storm water prevention methods will be monitored daily and maintained as required. A weekly erosion control log will be posted in the job trailer onsite, and updated weekly. Site inspections are required within 24 hours after a precipitation event of 0.5" or greater.

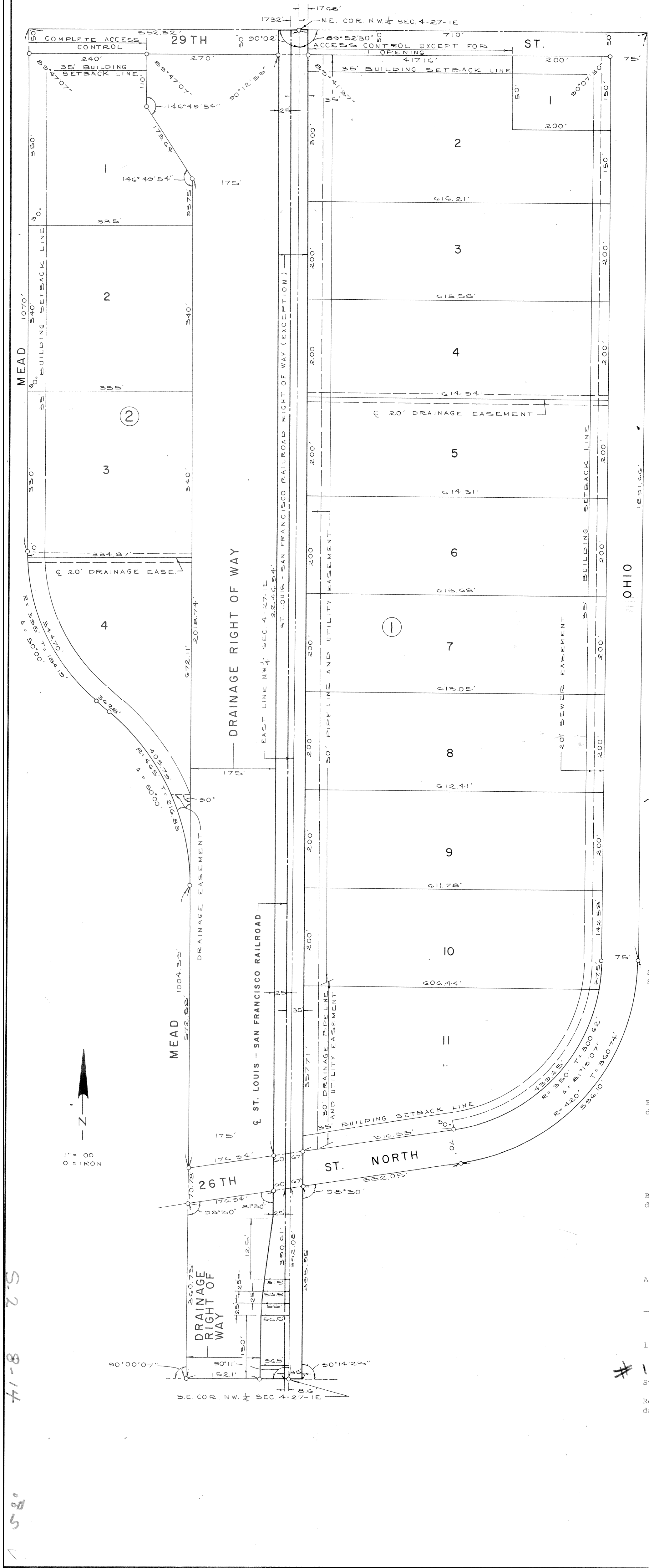
- LEGEND:**
- Flow Direction
  - Inlet Protection - to be provided at all inlets subject to silt laden runoff.
  - - - Ditch Check
  - Temporary Seeding and Mating.
  - Silt Fence or Hay Bale Barrier - to be installed along property lines where runoff from construction site can run onto other properties.
  - Stabilized Construction Entrance - to be used at all locations where vehicles or equipment enter or exit property.
  - Back of Curb Protection - to be installed whenever curb is backfilled to less than 3 inches from top and disturbed earth exists adjacent thereto. (See City Standard Details.)



Dold Foods  
Erosion Control Plan  
Wichita, Kansas

 KEMILLER ENGINEERING PA 117 E. Lewis, Wichita, KS 67202 (316)264-0242	PROJECT NUMBER		
	KEM NO. 17151	FILE	DATE 01/2018
DESIGN KM	DRAWN ME	REVISED	

NORTH INDUSTRIAL PARK SECOND ADDITION  
WICHITA, SEDGWICK COUNTY, KANSAS



State of Kansas, County of Sedgwick, SS.  
I, Kenneth O. Taylor, Civil Engineer in said State and County, do hereby certify that I have surveyed and platted "NORTH INDUSTRIAL PARK SECOND ADDITION", Wichita, Sedgwick County, Kansas, and that the accompanying plat is a true and correct exhibit of said survey described as follows: All that part of the following described land, to wit: Lots 56 to 106 even inclusive, on Washington Avenue, Lots 55 to 105 odd inclusive, on Mosley Avenue, Lots 56 to 106 even inclusive, on Mosley Avenue, all in Morton Wollman's Second Addition to Wichita, Kansas, and Lots 2 to 54 even inclusive, Washington Avenue, Lots 1 to 53 odd inclusive, Mosley Avenue, Lots 2 to 54 even inclusive, Mosley Avenue, all in Norton Wollman's Addition to Wichita, Kansas, except any part of above described lots or streets or alleys which are included in the boundaries of North Industrial Park, Wichita, Sedgwick County, Kansas, together with Lots 12 to 202 even inclusive, on Washington Avenue, Lots 31 to 201 odd inclusive, Wabash Avenue, Lots 36 to 202 even inclusive, Wabash Avenue, Lots 39 to 201 odd inclusive, Ohio Avenue, all in Fort Scott Addition to Wichita, Kansas, Lot 2 in Douglas Resurvey of Lots 2, 4, 6, 8 & 10, Washington Avenue, Fort Scott Addition to Wichita, Kansas, together with reversionary rights to streets, avenues, and alleys abutting same, and said streets, avenues and alleys not previously vacated being vacated and replatted by virtue of K.S.A. 1970 SUPP. 12-512(b) all of which lies within the following described tract, viz: Part of the NW 1/4 and part of the NE 1/4 in Section 4, T27S, R1E of the 6th P.M., Sedgwick County, Kansas, described as follows: Beginning at the NW corner of said NE 1/4 of said Section 4; thence east on the north line of said NE 1/4, 710 feet; thence south parallel to the west line of said NE 1/4, 1891.66 feet to the P.C. of a curve; thence southwesterly on a curve to the right having a radius of 420 feet and a deflection angle of 81°19'07", a distance of 596.10 feet to the P.T. of said curve; thence southwesterly on a tangent to said curve 332.05 feet to the east right of way line of the St. Louis-San Francisco Railroad; thence south on said right of way line, 395.95 feet to the south line of said NE 1/4; thence west 26.4 feet to the SW corner of said NE 1/4; thence west on the south line of said NW 1/4 of said Section 4, 208.6 feet; thence north with a deflection angle to the right of 90°00'07", 1004.39 feet to the P.C. of a curve; thence northwesterly on a curve to the left having a radius of 465 feet and a deflection angle of 50°00', a distance of 405.79 feet to the P.T. of said curve; thence northwesterly on a tangent to said curve, 36.28 feet to the P.C. of a curve; thence northeasterly on a curve to the right having a radius of 395 feet and a deflection angle of 50°00', a distance of 354.70 feet to the P.T. of said curve; thence north on a tangent to said curve, 1070 feet to the north line of said NW 1/4; thence east 552.32 feet to the point of beginning, EXCEPT the right of way of the St. Louis-San Francisco Railroad.

*Kenneth O. Taylor*, Civil Engineer  
Kenneth O. Taylor

Know all men by these presents that The Urban Renewal Agency of the Wichita, Kansas Metropolitan Area, a public corporation, by Albert L. Kamas, Chairman, has caused the land described in the Civil Engineer's certificate to be platted into lots, blocks, streets and drainage rights of way, to be known as "NORTH INDUSTRIAL PARK SECOND ADDITION", Wichita, Sedgwick County, Kansas. The sewer easement as indicated on the plat is hereby granted for the construction and maintenance of sanitary sewers. The drainage, utility and pipe line easement as indicated on the plat is hereby granted for drainage purposes, the construction and maintenance of all public utilities and pipe lines. The drainage easement as indicated on the plat is hereby granted for drainage purposes. The pipe line and utility easement as indicated on the plat is hereby granted for pipe lines and the construction and maintenance of all public utilities. The drainage rights of way as indicated on the plat are hereby dedicated to and for the use of the public for drainage purposes. The streets are hereby dedicated to and for the use of the public.

ATTEST: By *Albert L. Kamas*, Chairman  
Albert L. Kamas  
By *Kenneth H. Kitchen*, Secretary  
Kenneth H. Kitchen

State of Kansas, County of Sedgwick, SS.  
Be it remembered, that on this 7th day of November, 1972, before me the undersigned, a notary public in and for the County and State aforesaid, came Albert L. Kamas, Chairman of the Urban Renewal Agency of the Wichita, Kansas Metropolitan Area, a public corporation, to me personally known to be the same person who executed the within instrument as Chairman of said public corporation, and such person duly acknowledged the execution of same as Chairman, for and on behalf of, and as the act and deed of said public corporation. In testimony whereof, I have hereunto set my hand and affixed my official seal the day and year above written.

My Commission expires: February 24, 1974

This plat of "NORTH INDUSTRIAL PARK SECOND ADDITION", Wichita, Sedgwick County, Kansas, has been submitted to and approved by the Wichita-Sedgwick County Metropolitan Area Planning Commission, Wichita, Kansas, Dated this 12th day of October, 1972.

Wichita-Sedgwick County Metropolitan Area Planning Commission  
By *Alvin J. Hennessy*, Chairman  
*Robert A. Lakin*, Secretary  
Robert A. Lakin

This plat approved and all dedications shown hereon accepted by the Board of City Commissioners of the City of Wichita, Kansas, this 14th day of November, 1972.

*Glenn J. Shanahan*, Mayor  
Glenn J. Shanahan  
*Ralph C. Eberly*, City Clerk  
Ralph C. Eberly

This plat approved and all dedications shown hereon accepted by the Board of County Commissioners of Sedgwick County, Kansas, this 19th day of December, 1972.

*Earl E. Ray*, Chairman  
Earl E. Ray  
*Blmer G. Peters*, Commissioner  
Blmer G. Peters  
*Tom Scott*, Commissioner  
Tom Scott

ATTEST: *Marie Warden*, County Clerk  
Marie Warden

Entered on transfer record this 11 day of December, 1972.  
# 137075  
*Marie Warden*, County Clerk  
Marie Warden

State of Kansas, County of Sedgwick, SS.  
This is to certify that this instrument was filed for record in the Register of Deeds Office, at 2:30 o'clock P.m., on the 11th day of December, 1972.

*John Hale*, Register of Deeds  
John Hale  
*Pearl B. Gilbert*, Deputy  
Pearl B. Gilbert



This digital plat record accurately reproduces in all details the original plat filed with the Sedgwick County Register of Deeds. Digitized under the supervision of Register of Deeds Bill Meek by Sedgwick County Geographic Information Systems.  
*Bill Meek*, Register of Deeds  
Digitized rendition of original signature