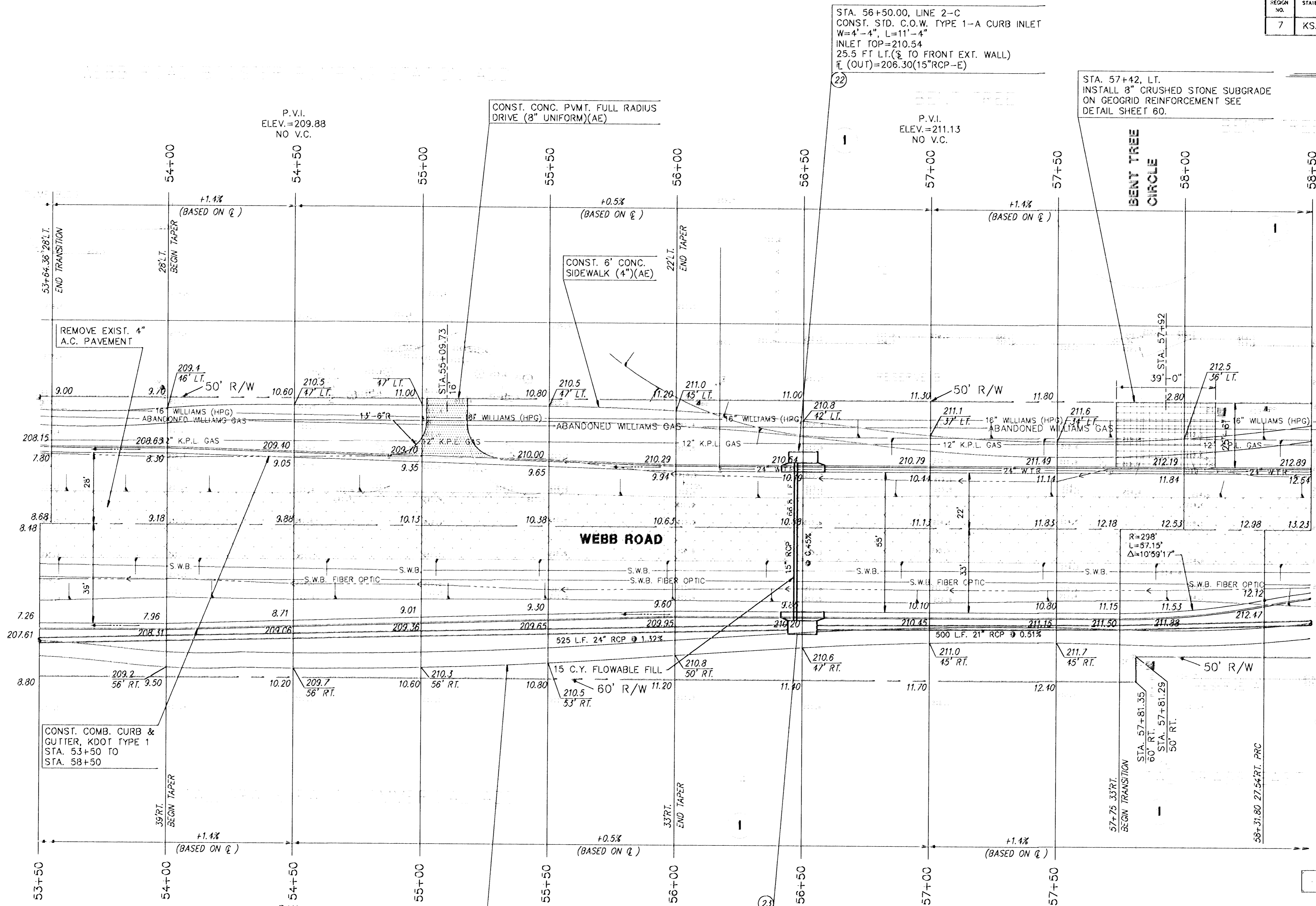


FHWA REGION NO.	STATE	PROJECT NO.	YEAR	SHEET NO.	TOTAL SHEETS
7	KS.	87-U-1362-01	1993	9	149



STA. 56+50.00, LINE 2-C  
 CONST. STD. C.O.W. TYPE 1-A CURB INLET  
 W=4'-4", L=11'-4"  
 INLET TOP=210.54  
 25.5 FT LT. (TO FRONT EXT. WALL)  
 E (OUT)=206.30(15"RCP-E)

STA. 57+42, LT.  
 INSTALL 8" CRUSHED STONE SUBGRADE  
 ON GEOGRID REINFORCEMENT SEE  
 DETAIL SHEET 60.

SCALE: 1"=20'

STA. 56+50.00, LINE 2, LINE 2-C  
 CONST. STD. C.O.W. TYPE 1-A CURB INLET  
 W=5'-4", L=11'-4"  
 INLET TOP=210.20  
 36.5 FT RT. (TO FRONT EXT. WALL)  
 E (IN)=206.00(15"RCP-W)  
 E (IN)=205.20(21"RCP-N)  
 E (OUT)=204.95(24"RCP-S)

LEGEND  
 PAVEMENT, DRIVEWAY AND/OR  
 SIDEWALK REMOVAL

WATER VALVE BOX ADJUSTMENT				
STATION	OFFSET	EXISTING ELEV.	PROPOSED ELEV.	NOTES
56+17	22'L	210.36	210.0 ±	W.V.

KANSAS GAS & ELECTRIC 264-1141  
 KPL GAS SERVICE CO. 263-7511  
 CITY OF WICHITA WATER DEPARTMENT 268-4908  
 SOUTHWESTERN BELL TELEPHONE CO. 1-571-2611  
 WILLIAMS PIPELINE 524-4390

KANSAS DEPARTMENT OF TRANSPORTATION  
**WEBB ROAD**  
**53+50 TO 58+50**  
 PROJECT NO. 87-U-1362-01 SEDGWICK CO.  
**MID-KANSAS ENGINEERING CONSULTANTS, INC.**  
 WICHITA, KANSAS

DESIGNED BY:	GJA	CHECKED BY:	DLH & KJS
DRAWN BY:	DLM	DATE:	SHEET 9 OF 149