

Revised: See At Bottom of this Sheet.

SCALE: 1"=20'

S.W. CORNER 4-27S.-2E.
 1. FOUND 1/2" PIPE IN THIMBLE
 2. @ PROP. IMPROVEMENTS 50+00
 3. 3 NAILS IN P.P
 4. 3 NAILS IN COR. POST
 5. 3 NAILS IN P.P
 49.9 S.W.
 63.25 S.E.
 60.75 N.E.

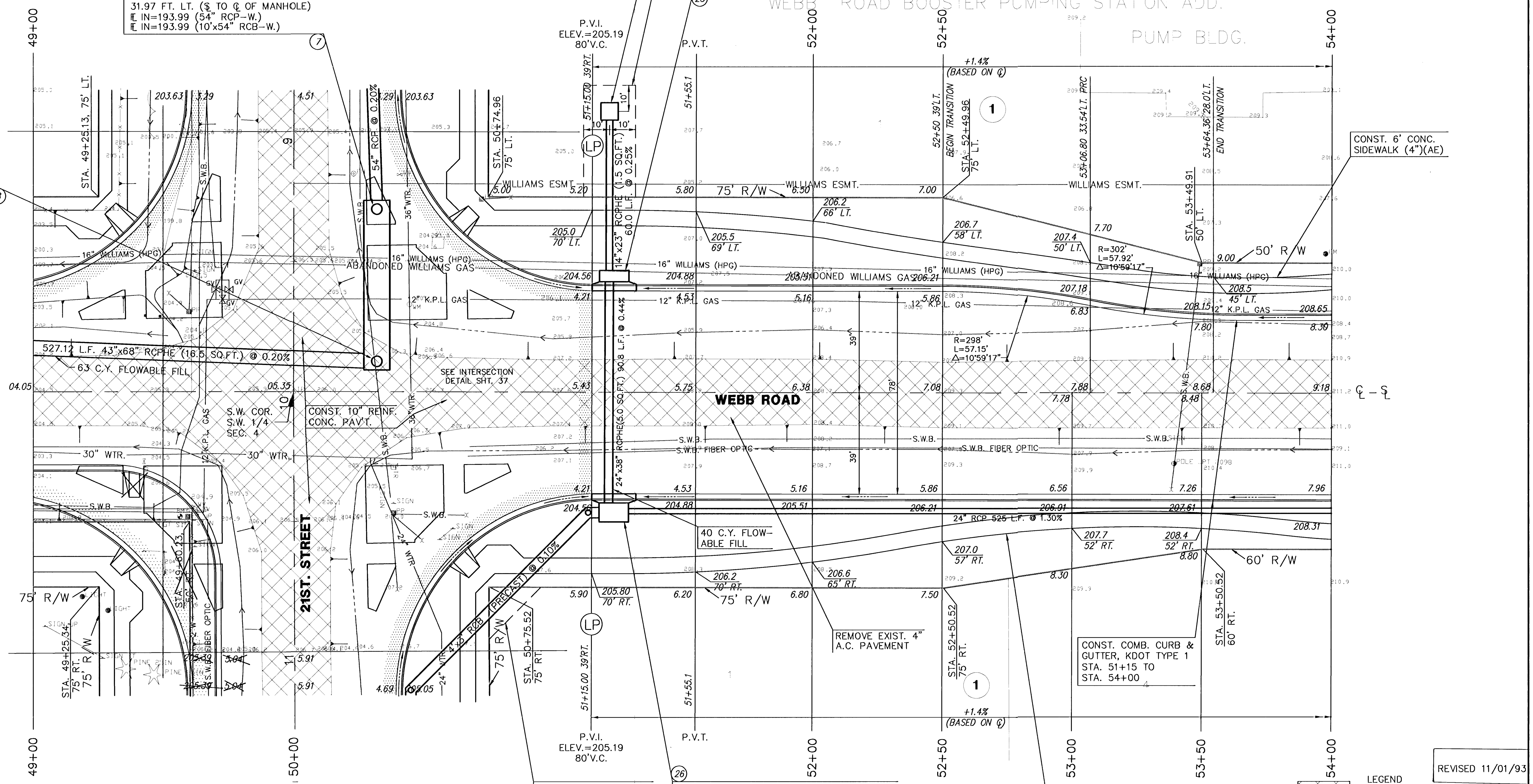
STA. 51+21.61, LINE 2-B
 CONST. 2-STD. C.O.W. DROP INLETS
 DOUBLE 24"x24" (SIDE BY SIDE)
 W=5'-4", L=6'-8"
 INLET TOP=204.0
 107.99 FT. LT. (§ TO @ INLET)
 @ OUT=198.50 (30"x19" RCPHE-E.)(3.0 SQ.FT.)

EXIST. 20' DRNG. ESMT. BY SEPARATE INSTRUMENT

STA. 51+23.50, LINE 2-B
 CONST. STD. C.O.W. TYPE 1-A CURB INLET
 W=4'-4", L=11'-4"
 INLET TOP=203.92
 42.5 FT. LT. (§ TO FRONT EXT. WALL)
 @ IN=198.35 (14"x23" RCPHE-W.)(1.5 SQ.FT.)
 @ OUT=198.25 (24"x38" RCPHE-E.)(5.0 SQ.FT.)

STA. 9+30.00(21ST. ST.), LINE 1
 CONST. STD. TYPE B MANHOLE STACK ON TOP OF SPECIAL 10'x54" RCB
 MANHOLE TOP=204.35
 31.97 FT. LT. (§ TO @ OF MANHOLE)
 @ IN=193.99 (54" RCP-W.)
 @ IN=193.99 (10'x54" RCB-W.)

STA. 9+88.50 (21ST. ST.), LINE 1
 CONST. STD. TYPE B MANHOLE STACK ON TOP OF SPECIAL 10'x54" RCB
 MANHOLE TOP=205.50
 31.97 FT. LT. (§ TO @ OF MANHOLE)
 @ IN=193.87 (10'x54" RCB-W.)
 @ OUT=193.87 (43"x68" RCPHE-S.) (16.5 SQ.FT.)



CONST. 6' CONC. SIDEWALK (4")(AE)

WEBB ROAD

21ST. STREET

TALLGRASS EAST COMM. ADD.

STATION	OFFSET	EXISTING ELEV.	PROPOSED ELEV.	NOTES
49+43	27'R	205.21	203.80	W.V.
49+62	45'R	206.78		R.W.D.W.V.
50+23	84'L			FH
50+40	84'L			RELOCATED BY CITY
50+40	84'L			W.V.
50+45	34'L	204.42	204.95	W.M.

CITY OF WICHITA WATER DEPARTMENT 268-4908
 KANSAS GAS & ELECTRIC (K.G.&E.) 264-1141
 KPL GAS SERVICE CO. 263-7511
 RURAL WATER DISTRICT 832-0213
 SOUTHWESTERN BELL TELEPHONE CO. 1-571-2611
 WILLIAMS PIPELINE 524-4390

BM #2 STANDARD CITY OF WICHITA DISC, WEBB RD. 48' RT., STA. 49+56.5 ELEV.=205.238

LEGEND
 PAVEMENT, DRIVEWAY AND/OR SIDEWALK REMOVAL.

KANSAS DEPARTMENT OF TRANSPORTATION
WEBB ROAD
49+00 TO 54+00
 PROJECT NO. 87-U-1362-01 SEDGWICK CO.
MID-KANSAS ENGINEERING CONSULTANTS, INC.
 WICHITA, KANSAS

DESIGNED BY: GJA	CHECKED BY: DLH & KJS
DRAWN BY: DLM	DATE: _____

SHEET 7 OF 149

REVISED 11/01/93