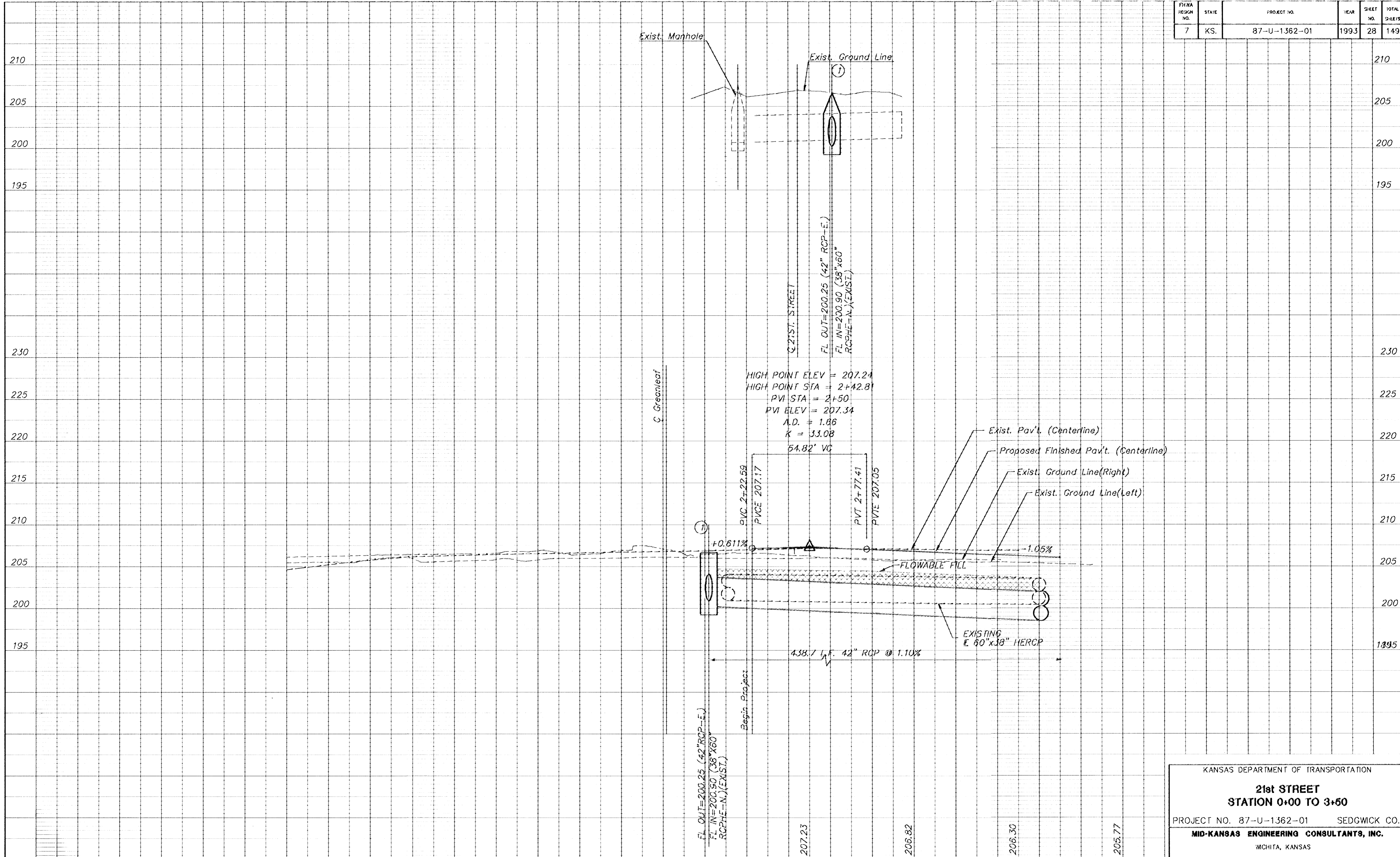


FHWA REGION NO.	STATE	PROJECT NO.	YEAR	SHEET NO.	TOTAL SHEETS
7	KS.	87-U-1362-01	1993	28	149



KANSAS DEPARTMENT OF TRANSPORTATION

21st STREET
STATION 0+00 TO 3+60

PROJECT NO. 87-U-1362-01 SEDGWICK CO.

MID-KANSAS ENGINEERING CONSULTANTS, INC.
 WICHITA, KANSAS

DESIGNED BY: GJA	CHECKED BY: DLH & KJS
DRAWN BY: ALN	DATE: SHEET 28 OF 149