

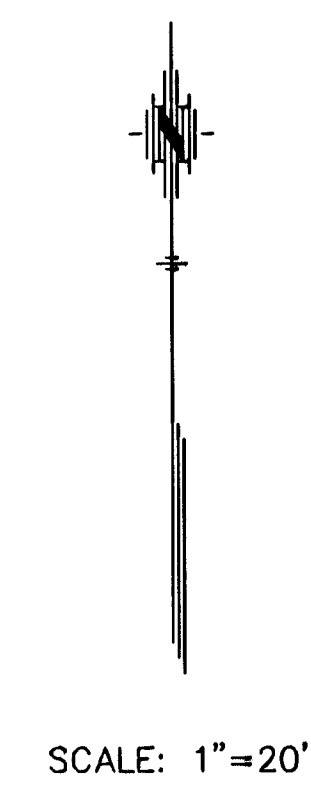
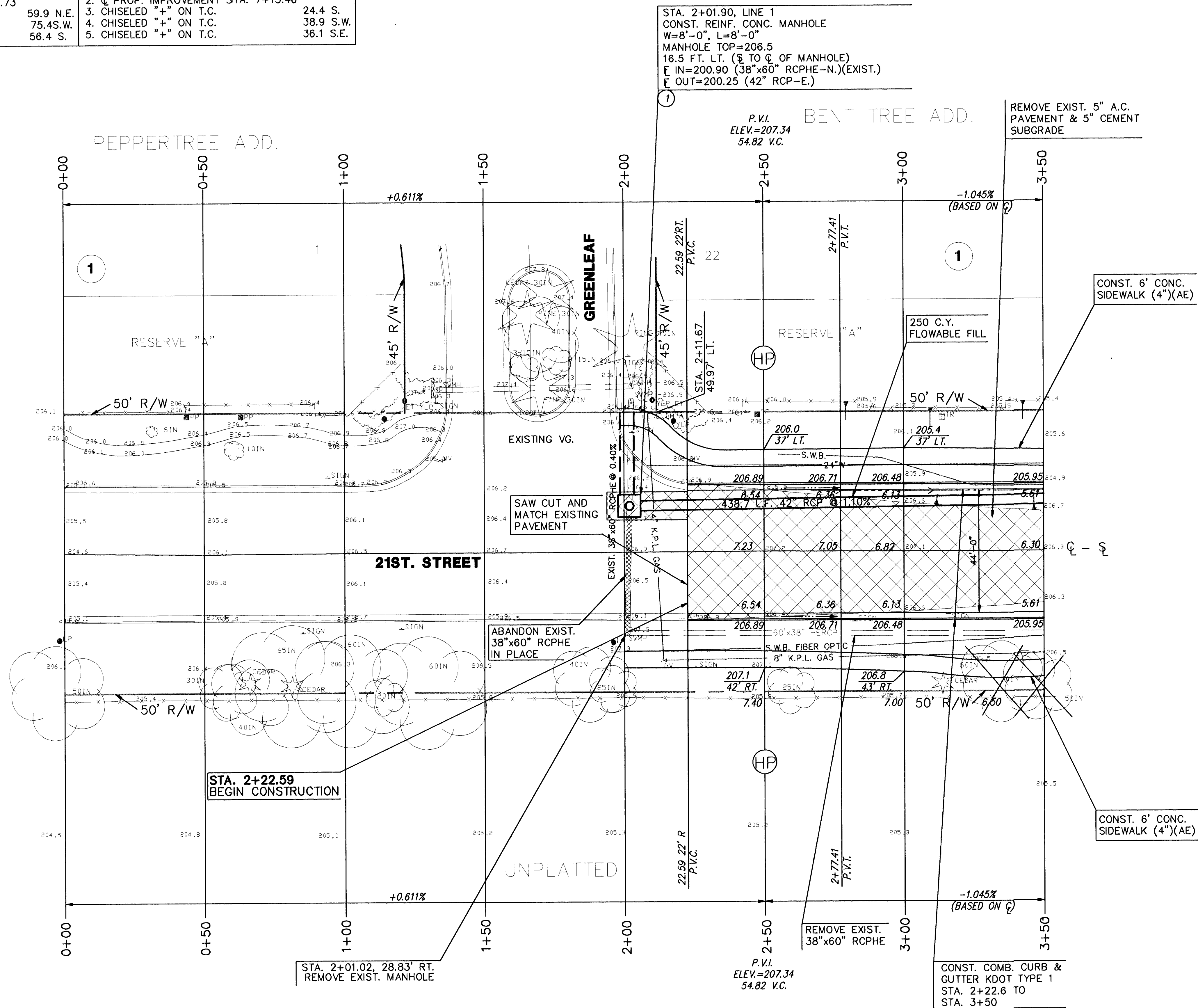
SOUTH 1/4 CORNER 5-27S.-2E.
 1. FOUND 1-1/4" BAR
 2. Q PROP. IMPROVEMENT STA. 16+51.73
 3. NAIL & DISC IN P.P.
 4. 3 NAILS IN L.P.
 5. 3 NAILS IN CORNER POST

P.O.T.
 1. P.K. NAIL ON SOUTH LINE S.E. 1/4 5-27S.-2E.
 2. Q PROP. IMPROVEMENT STA. 7+13.46
 3. CHISELED "+" ON T.C.
 4. CHISELED "+" ON T.C.
 5. CHISELED "+" ON T.C.

24.4 S.
 38.9 S.W.
 36.1 S.E.

59.9 N.E.
 75.4S.W.
 56.4 S.

FHWA REGION NO.	STATE	PROJECT NO.	YEAR	SHEET NO.	TOTAL SHEETS
7	KS.	87-U-1362-01	1993	27	149



LEGEND
 [Hatched Box] PAVEMENT, DRIVEWAY AND/OR SIDEWALK REMOVAL.

KANSAS DEPARTMENT OF TRANSPORTATION

**21ST. STREET NORTH
 0+00 TO 3+50**

PROJECT NO. 87-U-1362-01 SEDGWICK CO.

MID-KANSAS ENGINEERING CONSULTANTS, INC.
 WICHITA, KANSAS

DESIGNED BY: GJA	CHECKED BY: DLH & KJS
DRAWN BY: WNJ	DATE: SHEET 27 OF 149

KANSAS GAS & ELECTRIC (K.G.&E.) 264-1141
 KPL GAS SERVICE CO. 263-7511
 CITY OF WICHITA WATER DEPARTMENT 268-4908
 SOUTHWESTERN BELL TELEPHONE CO. 1-571-2611

B.M. #10 "□" CUT ON SOUTHEAST CORNER OF CURB INLET ON THE
 NORTHEAST CORNER OF 21ST. ST. & GREENLEAF
 51' LT. STA. 2+06.3, ELEV.=206.478