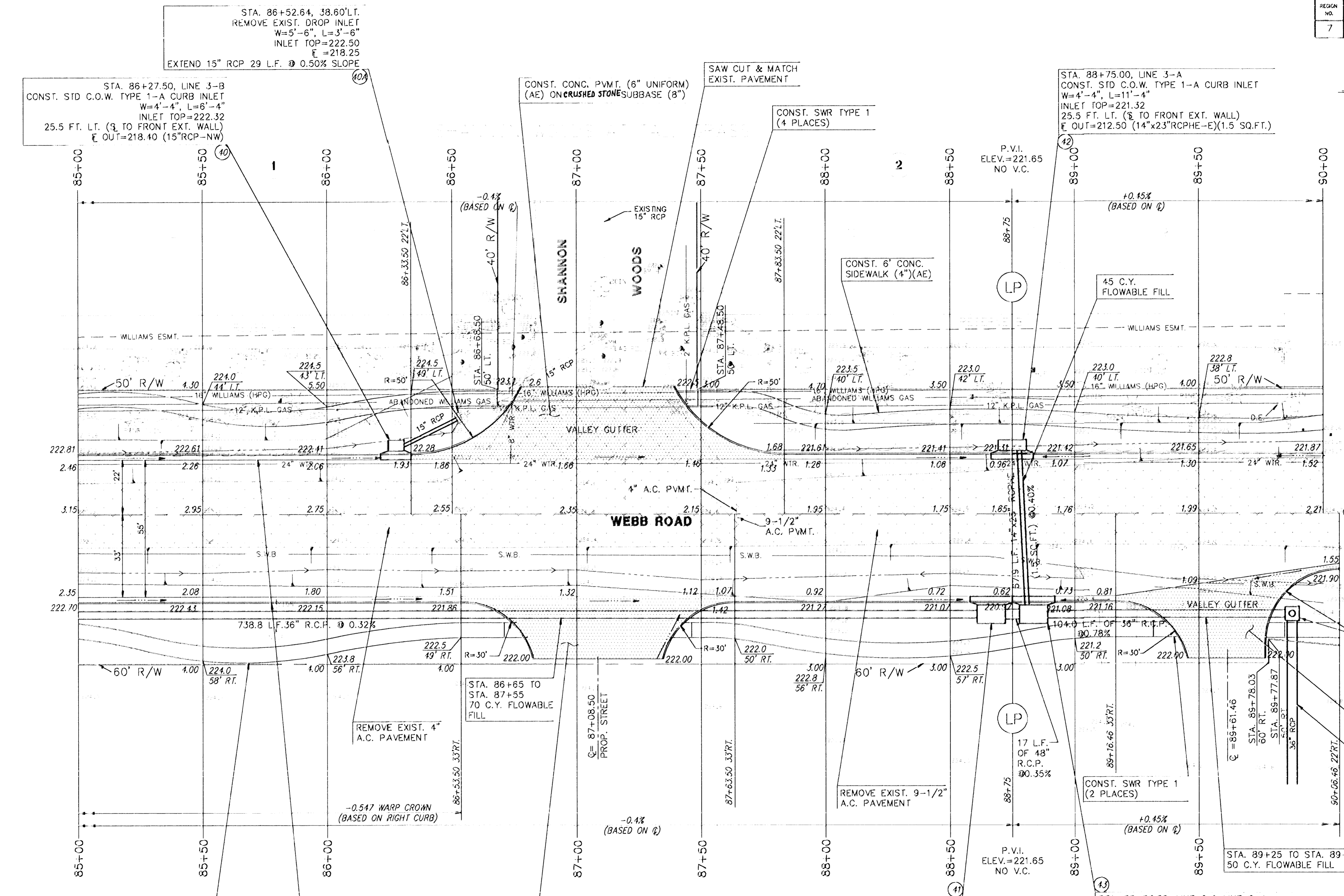


SCALE: 1"=20'



STA. 86+52.64, 38.60'L.T.  
REMOVE EXIST. DROP INLET  
W=5'-6", L=3'-6"  
INLET TOP=222.50  
E=218.25  
EXTEND 15" RCP 29 L.F. @ 0.50% SLOPE

STA. 86+27.50, LINE 3-B  
CONST. STD C.O.W. TYPE 1-A CURB INLET  
W=4'-4", L=6'-4"  
INLET TOP=222.32  
25.5 FT. LT. (3/8 TO FRONT EXT. WALL)  
E OUT=218.40 (15"RCP-NW)

CONST. CONC. PVMT. (6" UNIFORM)  
(AE) ON CRUSHED STONE SUBBASE (8")

CONST. SWR TYPE 1  
(4 PLACES)

STA. 88+75.00, LINE 3-A  
CONST. STD C.O.W. TYPE 1-A CURB INLET  
W=4'-4", L=11'-4"  
INLET TOP=221.32  
25.5 FT. LT. (3/8 TO FRONT EXT. WALL)  
E OUT=212.50 (14"x23"RCPHE-E)(1.5 SQ.FT.)

LEGEND  
PAYMENT, DRIVEWAY AND/OR  
SIDEWALK REMOVAL.

STA. 89+87.50, LINE 3  
CONST. REINF. CONC. MANHOLE  
W=5'-8", L=5'-8"  
MANHOLE TOP=222.00  
40.17 FT. RT. (3/8 TO MANHOLE)  
E IN=211.19 (36"RCP-S)  
E OUT=211.09 (36"RCP-E)

CONST. CONC. PVMT. (6" UNIFORM)  
(AE) ON CRUSHED STONE SUBBASE (8")

SEE SHEETS 46 & 47  
FOR CONSTRUCTION

STA. 89+25 TO STA. 89+87  
50 C.Y. FLOWABLE FILL

STA. 88+66.50, LINE 3  
CONST. STD C.O.W. TYPE 1-A CURB INLET  
W=7'-4", L=11'-4"  
INLET TOP=221.01  
36.5 FT. RT. (3/8 TO FRONT EXT. WALL)  
E IN=213.16 (36"RCP-S)  
E OUT=212.16 (48"RCP-N)

STA. 88+83.50, LINE 3 & LINE 3-A  
CONST. STD C.O.W. TYPE 1-A CURB INLET  
W=7'-4", L=11'-4"  
INLET TOP=221.01  
36.5 FT. RT. (3/8 TO FRONT EXT. WALL)  
E IN=212.23 (14"x23"RCPHE-W)(1.5 SQ.FT.)  
E IN=212.10 (48"RCP-S)  
E OUT=212.00 (36"RCP-N)

CONST. 6" CONC.  
SIDEWALK (4")(AE)

CONST. COMB. CURB &  
GUTTER KDOT TYPE 1  
STA. 85+00 TO  
STA. 90+00

CONST. CONC. PVMT. (6" UNIFORM)  
(AE) ON CRUSHED STONE SUBBASE (8")

KANSAS GAS & ELECTRIC (K.G.&E.) 264-1141  
KPL GAS SERVICE CO. 263-7511  
CITY OF MCHITA WATER DEPARTMENT 268-4908  
SOUTHWESTERN BELL TELEPHONE CO. 1-571-2611  
WILLIAMS PIPELINE 524-4390

B.M. #8 "D" CUT ON NORTH CURB, SHANNON WOODS COURT  
98'L.T. STA. 87+33.5, ELEV.=222.263

WATER VALVE BOX ADJUSTMENTS				
STATION	OFFSET	EXISTING ELEV.	PROPOSED ELEV.	NOTES
86+73	22'L	223.84	221.75	W.V.

KANSAS DEPARTMENT OF TRANSPORTATION

**WEBB ROAD**  
85+00 TO 90+00

PROJECT NO. 87-U-1362-01 SEDGWICK CO.

**MID-KANSAS ENGINEERING CONSULTANTS, INC.**  
MCHITA, KANSAS

DESIGNED BY:	GJA	CHECKED BY:	DLH & KJS
DRAWN BY:	DLM	DATE:	

SHEET 23 OF 149