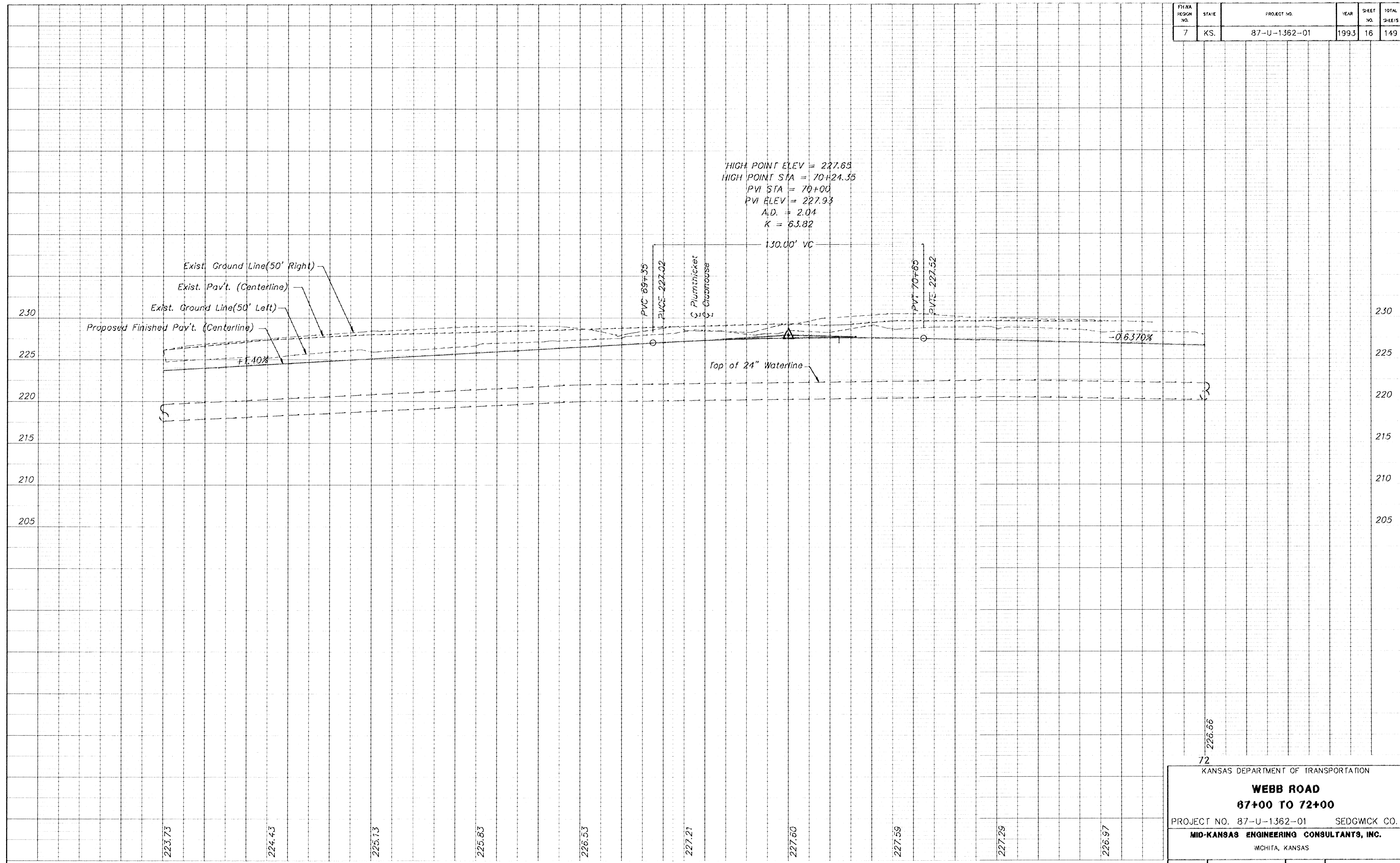


FHWA REGION NO.	STATE	PROJECT NO.	YEAR	SHEET NO.	TOTAL SHEETS
7	KS.	87-U-1362-01	1993	16	149



HIGH POINT ELEV = 227.63  
 HIGH POINT STA = 70+24.35  
 PVI STA = 70+00  
 PVI ELEV = 227.93  
 A.D. = 2.04  
 K = 63.82

130.00' VC

Exist. Ground Line(50' Right)  
 Exist. Pav't. (Centerline)  
 Exist. Ground Line(50' Left)  
 Proposed Finished Pav't. (Centerline)  
 1.40%

Top of 24" Waterline

-0.6370%

72  
226.66

KANSAS DEPARTMENT OF TRANSPORTATION

**WEBB ROAD**  
67+00 TO 72+00

PROJECT NO. 87-U-1362-01 SEDGWICK CO.  
MID-KANSAS ENGINEERING CONSULTANTS, INC.  
WICHITA, KANSAS

DESIGNED BY: GJA	CHECKED BY: DLH & KJS
DRAWN BY: ALN	DATE: 2/92

SHEET 16 OF 149  
9156-78