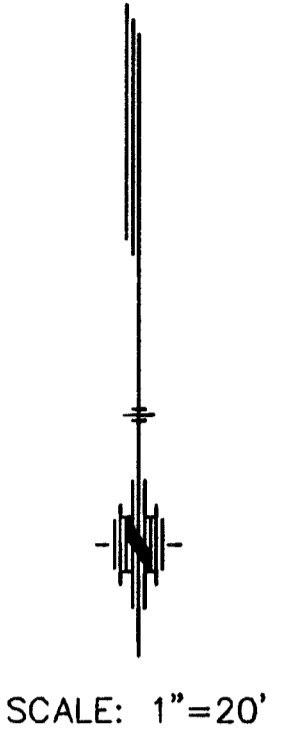


FHWA REGION NO.	STATE	PROJECT NO.	YEAR	SHEET NO.	TOTAL SHEETS
7	KS.	87-U-1362-01	1993	46	149

STA. 5+84.0, LINE 3  
 CONST. TYPE 'B' 5-FT. DIA. MANHOLE  
 OR TYPE 'P' 5-FT. DIA. MANHOLE  
 MANHOLE TOP = 220.7  
 FL IN & OUT = 206.52  
 (RUN 36" RCP THRU MANHOLE, CUT  
 OUT TOP HALF.)

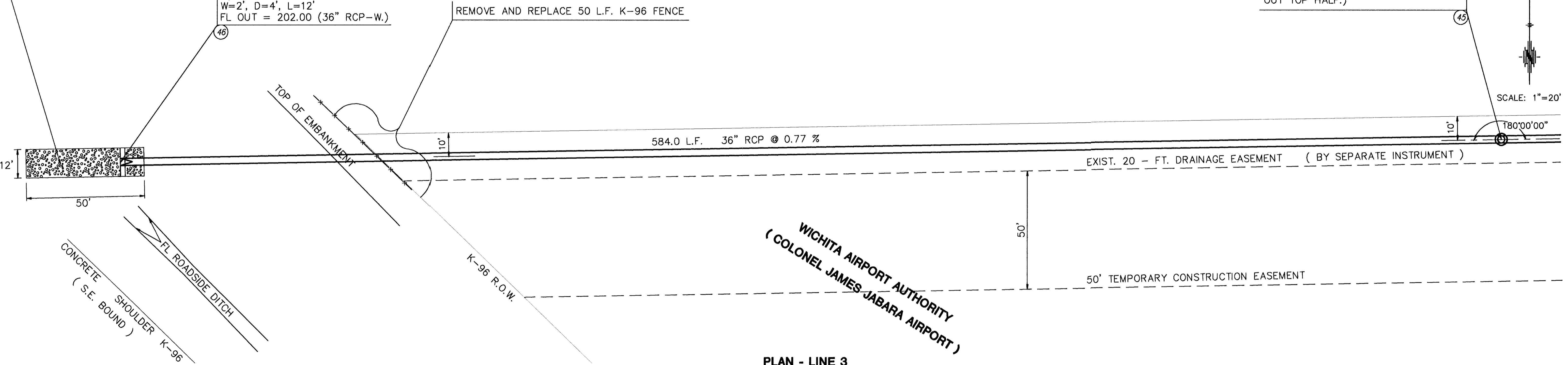


UNPLATTED

STA. 0+00.0, LINE 3  
 INSTALL 20 C.Y. ROCK EMBANKMENT

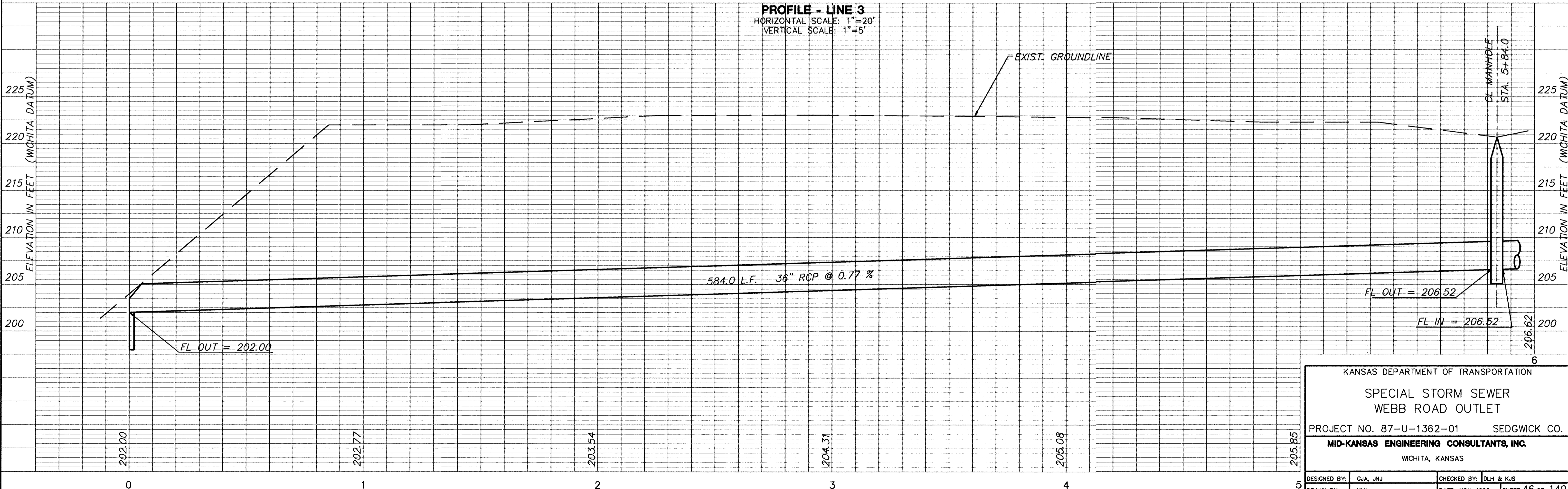
STA. 0+00.0, LINE 3  
 BEGIN 36" RCP STORM SEWER  
 W/END SECTION AND  
 W/CONCRETE TOE WALL  
 W=2', D=4', L=12'  
 FL OUT = 202.00 (36" RCP-W.)

REMOVE AND REPLACE 50 L.F. K-96 FENCE



PLAN - LINE 3

PROFILE - LINE 3  
 HORIZONTAL SCALE: 1"=20'  
 VERTICAL SCALE: 1"=5'



KANSAS DEPARTMENT OF TRANSPORTATION

SPECIAL STORM SEWER  
 WEBB ROAD OUTLET

PROJECT NO. 87-U-1362-01 SEDGWICK CO.

MID-KANSAS ENGINEERING CONSULTANTS, INC.  
 WICHITA, KANSAS

DESIGNED BY: GJA, JNJ	CHECKED BY: DLH & KJS
DRAWN BY: KLH	DATE: NOV. 1993 SHEET 46 OF 149

9156D3AB