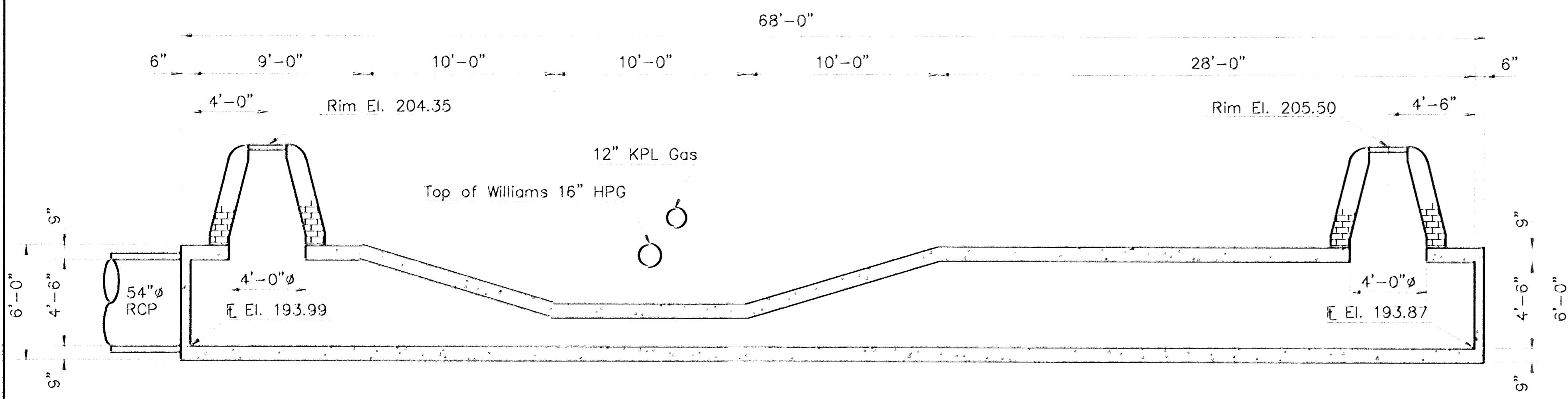
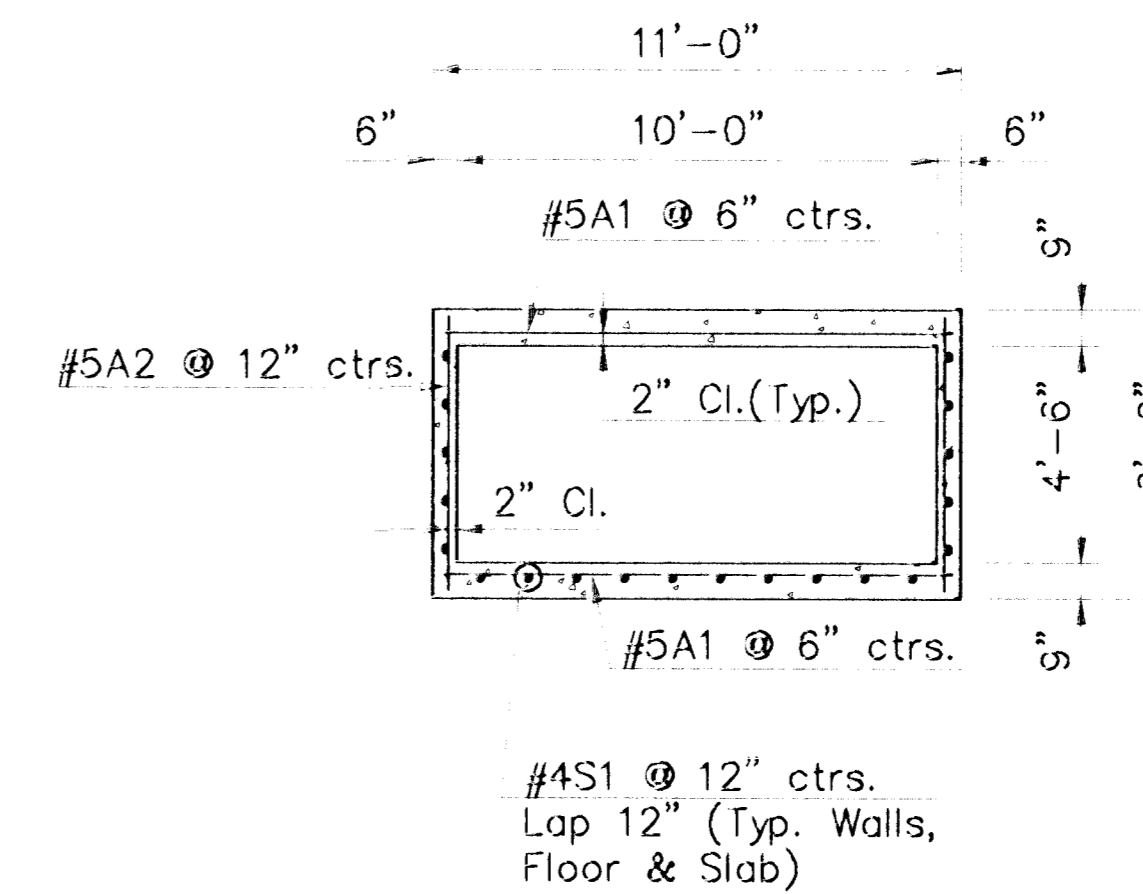


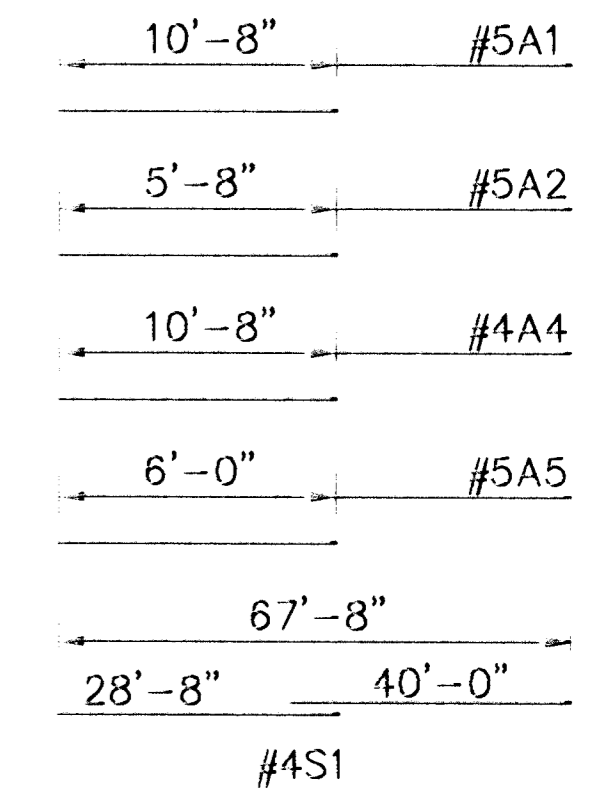
| FHWA REGION NO. | STATE | PROJECT NO. | YEAR | SHEET NO. | TOTAL SHEETS |
|-----------------|-------|--------------|------|-----------|--------------|
| 7 | KS. | 87-U-1362-01 | 1993 | 61 | 149 |



SECTION @ RCB
(Reinforcing not shown for Clarity.)

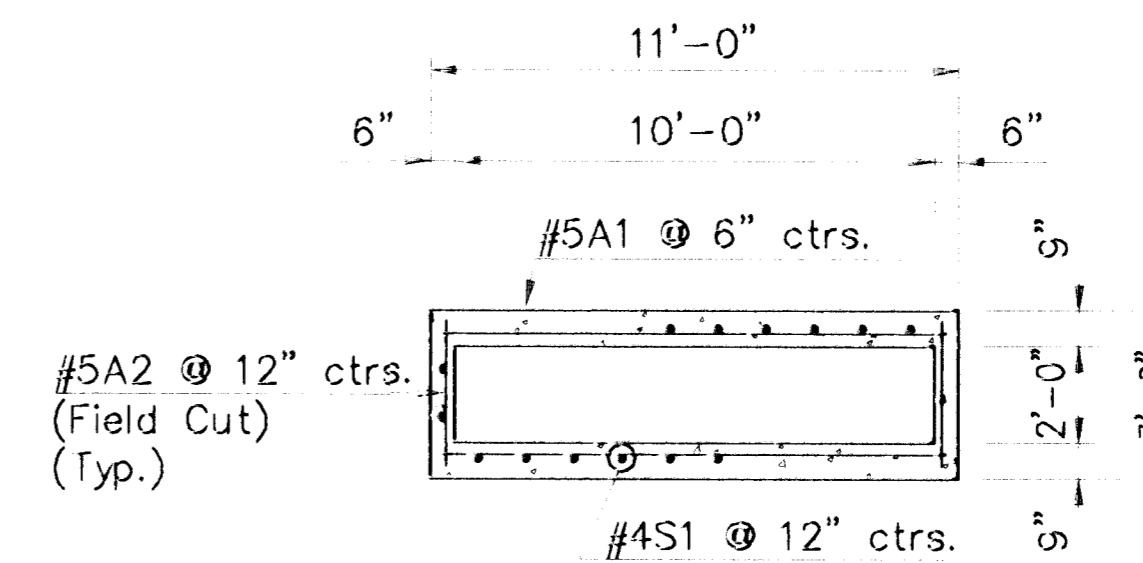


SECTION A

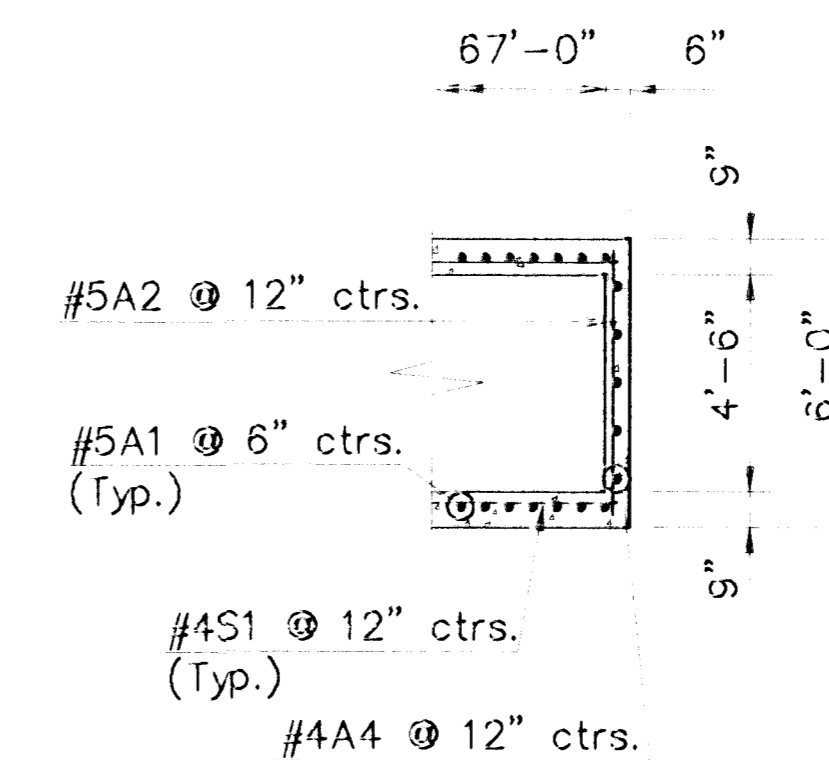


| MARK | No. |
|------|-----|
| #5A1 | 280 |
| #5A2 | 156 |
| #4A4 | 10 |
| #5A5 | 16 |
| #4S1 | 30 |

REINFORCING DETAILS



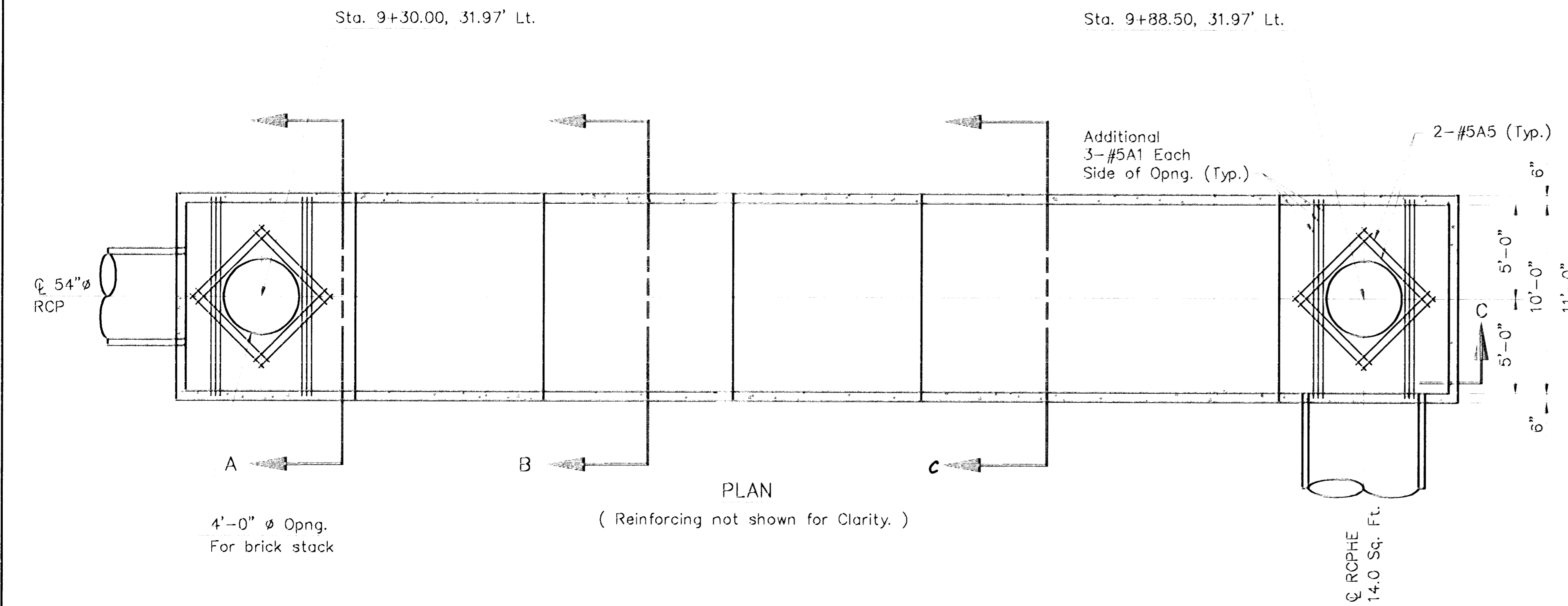
SECTION B



SECTION C

| SUMMARY OF QUANTITIES | |
|-----------------------------------|---------------|
| Reinforced Concrete Box (Special) | 67.0 Lin. Ft. |
| Manholes (Brick) | 2 Each |

| SUMMARY (For Information Only) | | |
|-----------------------------------|-------|----------|
| Class AAA Concrete (AE) | 56.4 | Cu. Yds. |
| Reinforcing Steel (Gr.60) | 5,590 | Lbs. |



PLAN
(Reinforcing not shown for Clarity.)

NOTES :

- The bid item "Reinforced Concrete Box" shall be full compensation for all labor materials, excavation, backfill and equipment necessary to complete the work.
- The two brick stacks shall be paid as "Manhole (Type B)" Each, which shall include full compensation for all labor, materials and equipment necessary to complete the work.
- Bend and cut reinforcing as necessary to clear pipe and manhole openings.

KANSAS DEPARTMENT OF TRANSPORTATION

REINFORCED CONCRETE BOX (SPECIAL) DETAILS

PROJECT NO. 87-U-1362-01 SEDGWICK CO.

MID-KANSAS ENGINEERING CONSULTANTS, INC.
WCHITA, KANSAS

| | |
|---------------------|-----------------------|
| DESIGNED BY: K.J.S. | CHECKED BY: KJS |
| DRAWN BY: K.L.H. | DATE: SHEET 61 OF 149 |

Scale: 1/4"=1' RCB