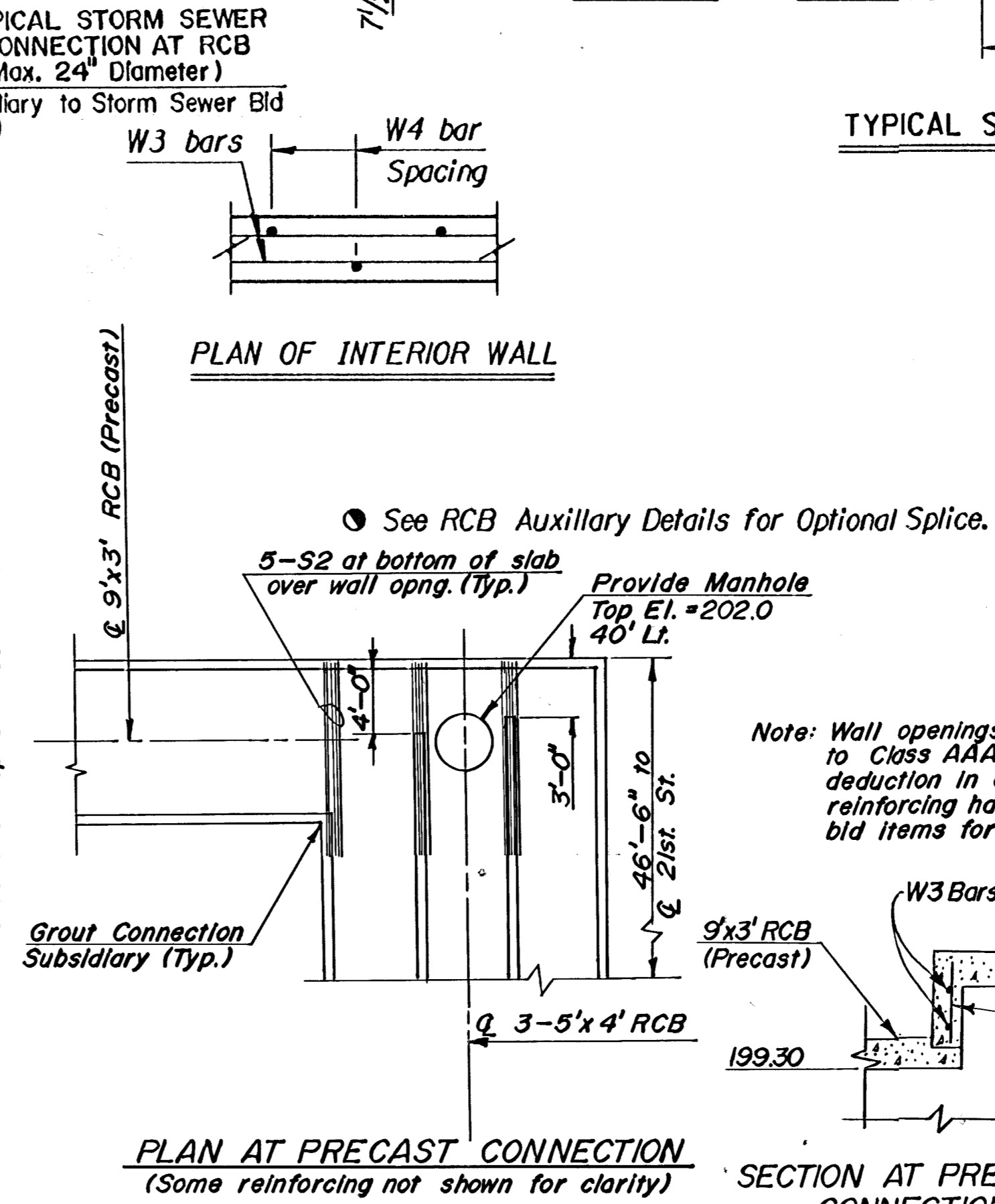
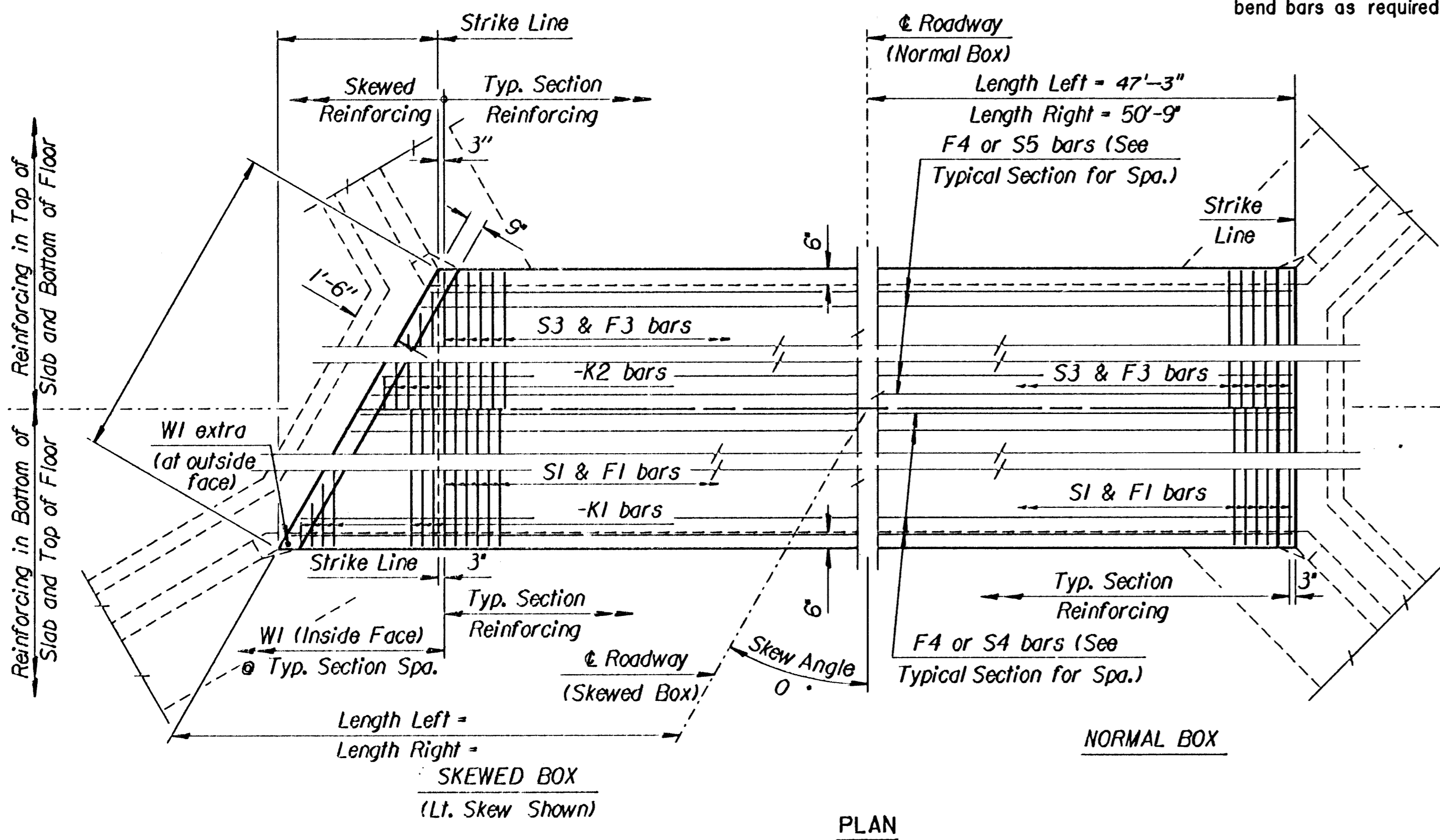


**GENERAL NOTES**

**LOADING:** HS20-44 AASHTO Specifications, 1983 Edition.  
**UNIT STRESSES:** Class AAA Concrete; f'c = 4,000 p.s.i.  
 Reinforcing Steel; fy = 60,000 p.s.i.  
**FILL HEIGHT:** Unless otherwise noted, the Design Fill Height is measured from the riding surface at the culvert and shall include the surfacing.  
**CONCRETE:** Class AAA Concrete shall be used throughout. Bevel all exposed edges with a 1/4 inch triangular moulding. Where Class AAA Concrete (AE) is specified, it shall be placed in the top slab above the Construction Joint.  
**REINFORCING:** All reinforcing shall conform to ASTM A615, Grade 60. All dimensions relative to reinforcing steel shall be to centerline of bar unless otherwise noted.  
**EXCAVATION:** Excavation for culverts less than bridge length shall not be paid for directly but shall be subsidiary to Class AAA Concrete. Excavation for RCB Bridges shall be paid for as Class III Excavation.  
**SEAL COURSE:** A Seal Course may be required by the Engineer. The Seal Course shall be unreinforced Concrete (Commercial Grade) to a minimum depth of 3 inches or as determined by the Engineer. Concrete for the seal course shall be paid for at the unit price of Class AAA Concrete.  
**FOUNDATION STABILIZATION:** Foundation Stabilization may be required as directed by the Engineer. The depth of Foundation Stabilization shall be paid for at the determined Unit Price set for Foundation Stabilization. See Auxiliary Details.  
**QUANTITIES:** The quantities shown in the Culvert Summary include apron and/or soil saver quantities when their construction is required by the plans. Payment for additional quantities that result from including seal course and/or floating apron, as a change in original plans, shall be made at the Unit Price bid for the various items involved. Wingwall quantities shown include all quantities outside the neat lines of the box.  
**GRANULAR BACKFILL (WINGWALLS):** Special backfill procedures may be required at the direction of the Engineer. See Auxiliary Details Sheet.  
**STRIKE LINE:** Wingwalls and that portion of the RCB outside the Strike Line shall be constructed level. Footing for wingwalls shall be constructed with the culvert floor. See wingwall detail sheet.

DATE	BY	CHKD.	DATE	BY	CHKD.

PROJECTS  
 ZFAZL200.21mxc02.dgn  
 25-NOV-1992 08:56  
 View=



**SECTION AT PRECAST CONNECTION**  
 (Some reinforcing not shown for clarity)

Minimum Splice Lengths	
#4	1'-4"
#5	1'-8"
#6	2'-0"

**CULVERT SUMMARY**

Flow Line Elev. Lt.	Flow Line Elev. Rt.	Crown Gr. Elev.	Design Fill Ht.	Skew	Left Wings	Right Wings	Scour Apron	Soil Saver	Granular Backfill	Concrete			Reinf. Steel (Gr. 60)		
										Barrel (Cu.Yds.)	Wings (Cu.Yds.)	Total (Cu.Yds.)	Barrel (Lbs.)	Wings (Lbs.)	Total (Lbs.)
196.30	196.60	203.40	5	0	FLARED	FLARED	YES	NO	NO	94.76	8.96	103.72	12605.2	462.26	13067.5

\* See Bending Diagram

**BAR SCHEDULE S**

F1				F3				F4				S1				S2				S3				S4				S5													
Size	Spa.	No.	Length	Size	Spa.	No.	Length	Size	Spa.	No.	Length	Size	Spa.	No.	Length	Size	Spa.	No.	Length	Size	Spa.	No.	Length	Size	Spa.	No.	Length	Size	Spa.	No.	Length	Size	Spa.	No.	Length						
4	9"	132	16'-10"	4	8 1/2"	140	16'-10"	4	9"	90	34'-0"	4	9"	132	16'-10"	5	3"	15	12'-0"	4	8 1/2"	140	16'-10"	4	36	34'-0"	4	36	34'-0"	4	36	34'-0"	4	36	34'-0"	4	36	34'-0"	4	36	34'-0"
K1				K2				W1				W3				W4				G1				G2																	
-	-	-	*	-	-	-	*	4	9"	286	4'-11"	-	-	-	-	4	52	34'-0"	4	9"	262	4'-11"	5	4	16'-10"	-	-	-	-	-	-	-	-	-	-	-	-				

**SUMMARY OF QUANTITIES**

Class AAA Concrete	103.7	C.Y.
Class AAA Concrete (AE)	0.0	C.Y.
Class III Excavation		C.Y.
Reinforcing Steel (Gr. 60)	13,070	Lbs.
Reinforcing Steel (Epoxy Coated)	0	Lbs.
Foundation Stabilization (Set)	1	C.Y.
Granular Backfill (Wingwalls) (Set)	1	C.Y.

NO. DATE REVISIONS BY APP'D

KANSAS DEPARTMENT OF TRANSPORTATION  
 Sta. 20+50  
 TRIPLE 5' x 4' RCB

Std. No. 3-05-04 SEDGWICK CO.

FHWA APPROVAL 6-5-91 APP'D KENNETH F. TRACY  
 DESIGNED TRACY  
 DESIGN CR. DETAIL CR. QUANTITIES CR. TRACE CR.