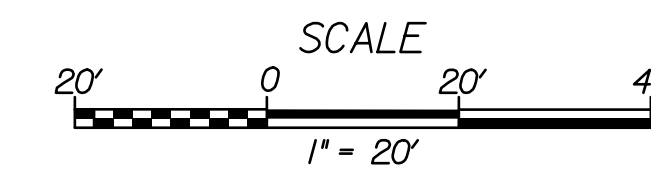


SITE 6 SURVEY CONTROL & DATUM BENCHMARK

Horizontal - Kansas State Plane Coordinates  
(NAD83 Kansas South Zone 1502)

Vertical - BM #220  
N 1,652,962.417  
E 1,663,788.521  
Datum: NAVD88 - Elev. = 1296.004'



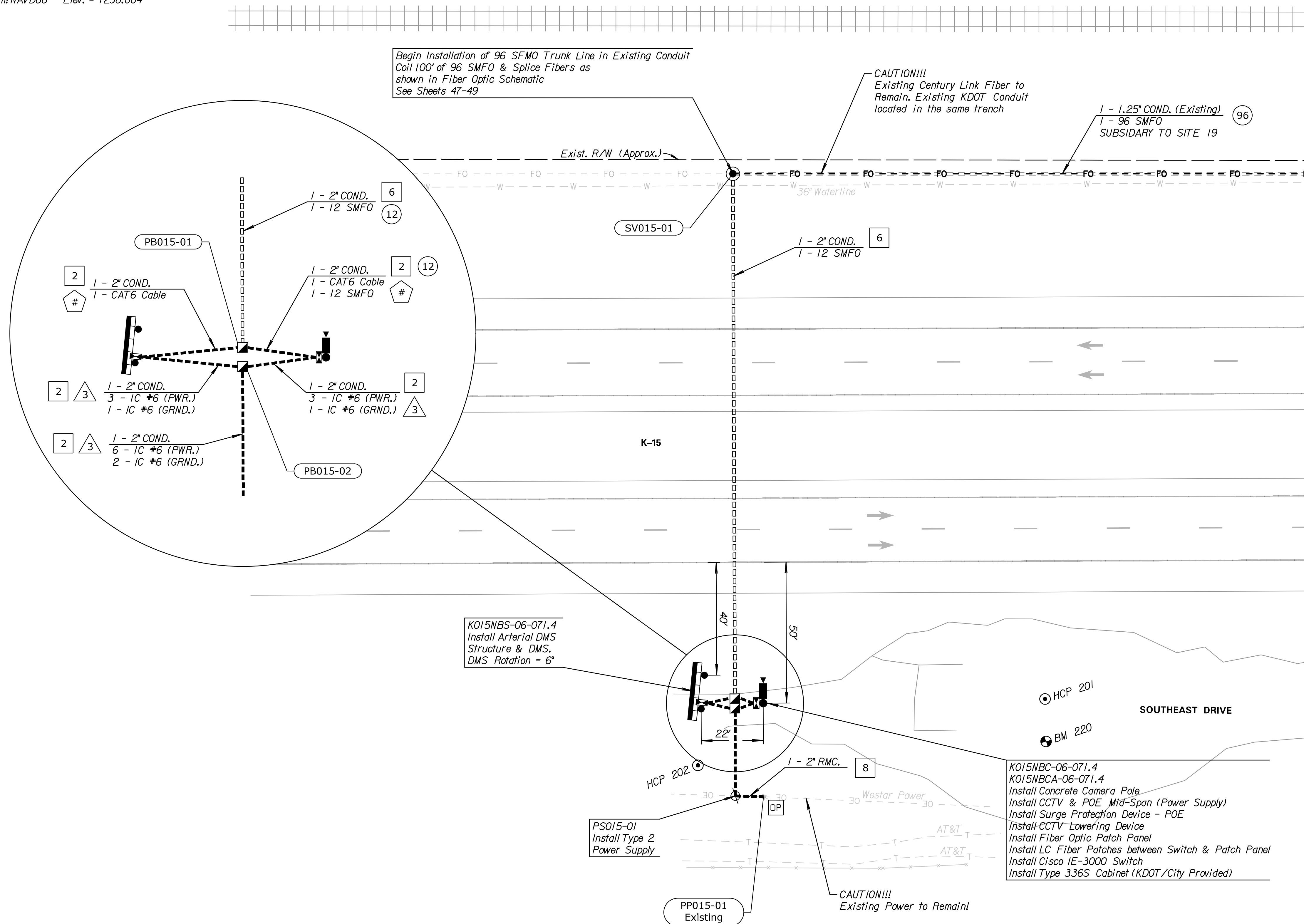
STATE	PROJECT NO.	YEAR	SHEET NO.	TOTAL SHEETS
KANSAS	87 N-0673-01	2017	18	99

NOTE: DEVICE AND CONDUIT SYMBOLY ON PLAN SHEET IS NOT SHOWN TO SCALE FOR PLAN CLARITY. DO NOT SCALE LOCATIONS FROM PLAN SHEET.

GENERAL NOTES

- ALL EQUIPMENT SHALL BE NEW UNLESS SHOWN OTHERWISE ON THE PLANS. EXISTING CONTROLLER CABINET, POWER ENCLOSURE, SERVICE BOX, CONFLICT MONITOR, TRAFFIC SIGNAL CONDUIT AND WIRING TO REMAIN.
- EXISTING FEATURES AND UTILITIES ARE SHOWN FROM AVAILABLE INFORMATION AND SHOULD BE CONSIDERED APPROXIMATE ONLY. IT IS THE RESPONSIBILITY OF THE CONTRACTOR TO VERIFY UTILITIES AND THEIR EXACT LOCATION PRIOR TO CONSTRUCTION.
- POWER SERVICE TO BE INSTALLED BY WESTAR ENERGY. WESTAR TO PROVIDE 120/240V SERVICE. CONTRACTOR TO PAY FOR AND COORDINATE POWER SERVICE INSTALLATION WITH WESTAR ENERGY.
- F&I POWER FROM POWER SUPPLY ASSEMBLY TO ITS DMS & CCTV CABINETS.
- F&I POWER FROM DMS CABINET TO DMS.
- THE COMMUNICATION BETWEEN THE CCTV CABINET AND THE DMS CABINET IS VIA CAT6 CABLE.
- INSTALL DMS SIGNAL CABLE. DMS SUPPLIER TO TERMINATE SIGNAL CABLE AND MAKE FINAL CONNECTIONS. DMS MANUFACTURER WILL PROVIDE SIGNAL CABLE BETWEEN DMS AND CABINET.
- FOR CROSS SECTIONS AT DEVICE LOCATIONS, SEE SHEET 74
- FOR FIBER SCHEMATIC & DETAILS, SEE SHEETS 49-55
- 96 SFMO TRUNK LINE IN EXISTING CONDUIT SHALL BE INCLUDED IN THE SITE 19 BID ITEM. FOR DETAILS, SEE SHEETS 47-49
- ALL CONDUIT SHALL BE BORED UNDER EXISTING PAVEMENT.
- SITE SHALL BE PAID FOR BY THE LUMP SUM. FOR A SUMMARY OF SITE QUANTITIES, SEE SHEET 5

DATE	
BY	
REFERENCES NOTED	
REFERENCES CHECKED	

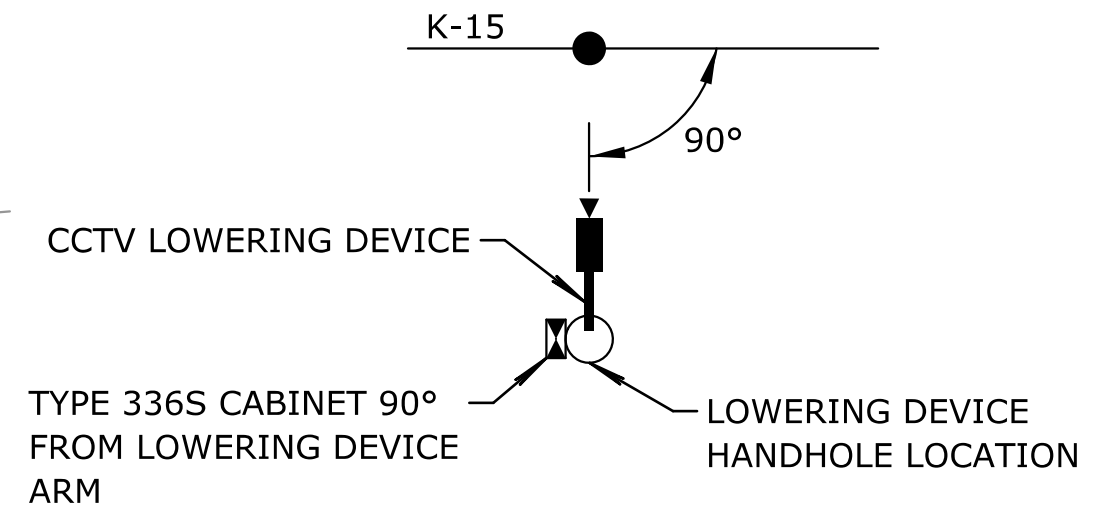


Drawn By : examples  
Plotted : 11/14/2017  
File : c:\transystems\pw\_local\transyscorp-pw\coba\kaid0521528\C-SGN-M01-120.dgn

HCP-201  
Mag Nail  
N 1,652,955.443  
E 1,663,775.171  
Elev. = 1293.497'

HCP-202  
1/2 Rebar W/ CP Cap  
N 1,652,855.344  
E 1,663,850.533  
Elev. = 1291.295'

BID ITEM		
ITEM	UNIT	QUANTITY
INTELLIGENT TRANSPORTATION SYSTEM SITE 6	L.S.	1



CCTV ORIENTATION

THE LOWERING DEVICE HANDHOLE LOCATION SHALL BE ON THE OPPOSITE SIDE OF THE CAMERA POLE THAN THE PTZ DOME CAMERA ALLOWING THE CAMERA TO BE LOWERED WITHOUT STANDING UNDER THE CAMERA. THE CABINET SHALL BE ORIENTED TO NEITHER BLOCK THE HAND HOLE NOR BE LOCATED UNDER THE CAMERA. FOR DETAILS, SEE SHEET 67

KANSAS DEPARTMENT OF TRANSPORTATION  
SITE 6  
K-15 & MIXING YARD CAMERA