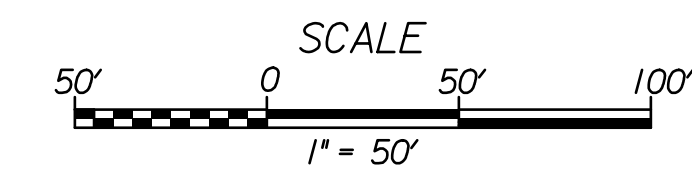
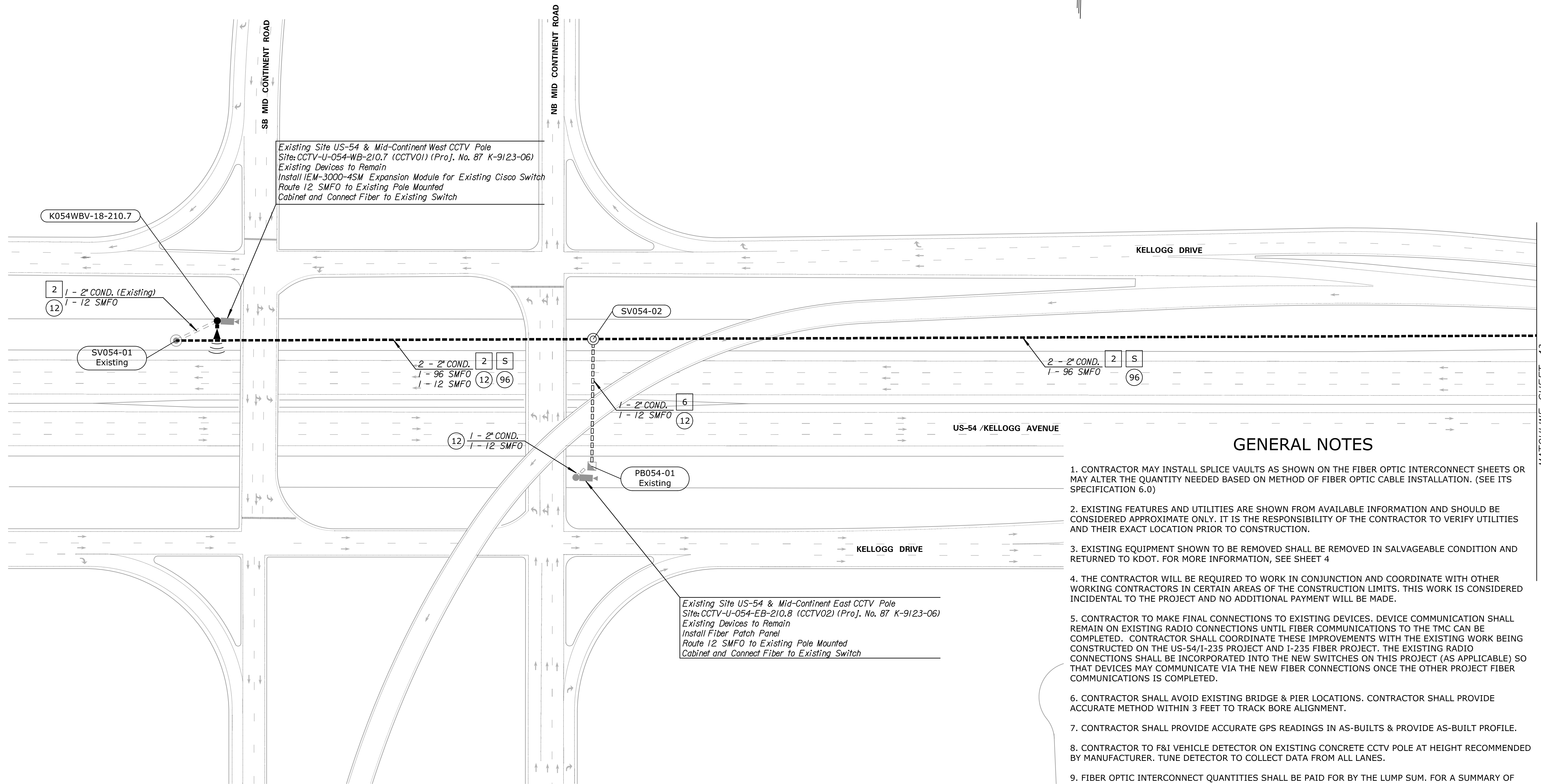


STATE	PROJECT NO.	YEAR	SHEET NO.	TOTAL SHEETS
KANSAS	87 N-0673-01	2017	42	99



NOTE: DEVICE AND CONDUIT SYMOLOGY ON PLAN SHEET IS NOT SHOWN TO SCALE FOR PLAN CLARITY. DO NOT SCALE LOCATIONS FROM PLAN SHEET.

DATE	
BY	
REFERENCES NOTED	
REFERENCES CHECKED	



Existing Site US-54 & Mid-Continent West CCTV Pole
 Site: CCTV-U-054-WB-210.7 (CCTV01) (Proj. No. 87 K-9123-06)
 Existing Devices to Remain
 Install IEM-3000-4SM Expansion Module for Existing Cisco Switch
 Route 12 SMFO to Existing Pole Mounted Cabinet and Connect Fiber to Existing Switch

Existing Site US-54 & Mid-Continent East CCTV Pole
 Site: CCTV-U-054-EB-210.8 (CCTV02) (Proj. No. 87 K-9123-06)
 Existing Devices to Remain
 Install Fiber Patch Panel
 Route 12 SMFO to Existing Pole Mounted Cabinet and Connect Fiber to Existing Switch

GENERAL NOTES

- CONTRACTOR MAY INSTALL SPLICE VAULTS AS SHOWN ON THE FIBER OPTIC INTERCONNECT SHEETS OR MAY ALTER THE QUANTITY NEEDED BASED ON METHOD OF FIBER OPTIC CABLE INSTALLATION. (SEE ITS SPECIFICATION 6.0)
- EXISTING FEATURES AND UTILITIES ARE SHOWN FROM AVAILABLE INFORMATION AND SHOULD BE CONSIDERED APPROXIMATE ONLY. IT IS THE RESPONSIBILITY OF THE CONTRACTOR TO VERIFY UTILITIES AND THEIR EXACT LOCATION PRIOR TO CONSTRUCTION.
- EXISTING EQUIPMENT SHOWN TO BE REMOVED SHALL BE REMOVED IN SALVAGEABLE CONDITION AND RETURNED TO KDOT. FOR MORE INFORMATION, SEE SHEET 4
- THE CONTRACTOR WILL BE REQUIRED TO WORK IN CONJUNCTION AND COORDINATE WITH OTHER WORKING CONTRACTORS IN CERTAIN AREAS OF THE CONSTRUCTION LIMITS. THIS WORK IS CONSIDERED INCIDENTAL TO THE PROJECT AND NO ADDITIONAL PAYMENT WILL BE MADE.
- CONTRACTOR TO MAKE FINAL CONNECTIONS TO EXISTING DEVICES. DEVICE COMMUNICATION SHALL REMAIN ON EXISTING RADIO CONNECTIONS UNTIL FIBER COMMUNICATIONS TO THE TMC CAN BE COMPLETED. CONTRACTOR SHALL COORDINATE THESE IMPROVEMENTS WITH THE EXISTING WORK BEING CONSTRUCTED ON THE US-54/I-235 PROJECT AND I-235 FIBER PROJECT. THE EXISTING RADIO CONNECTIONS SHALL BE INCORPORATED INTO THE NEW SWITCHES ON THIS PROJECT (AS APPLICABLE) SO THAT DEVICES MAY COMMUNICATE VIA THE NEW FIBER CONNECTIONS ONCE THE OTHER PROJECT FIBER COMMUNICATIONS IS COMPLETED.
- CONTRACTOR SHALL AVOID EXISTING BRIDGE & PIER LOCATIONS. CONTRACTOR SHALL PROVIDE ACCURATE METHOD WITHIN 3 FEET TO TRACK BORE ALIGNMENT.
- CONTRACTOR SHALL PROVIDE ACCURATE GPS READINGS IN AS-BUILTS & PROVIDE AS-BUILT PROFILE.
- CONTRACTOR TO F&I VEHICLE DETECTOR ON EXISTING CONCRETE CCTV POLE AT HEIGHT RECOMMENDED BY MANUFACTURER. TUNE DETECTOR TO COLLECT DATA FROM ALL LANES.
- FIBER OPTIC INTERCONNECT QUANTITIES SHALL BE PAID FOR BY THE LUMP SUM. FOR A SUMMARY OF US-54 FIBER OPTIC INTERCONNECT QUANTITIES, SEE SHEET 5

MATCHLINE SHEET 43

Drawn By : examples
 Plotted : 11/14/2017
 File : c:\transystems\pw_local\transyscorp-pw\coba\kaid0521528\C-SGN-M01-121.dgn

BID ITEM		
ITEM	UNIT	QUANTITY
INTELLIGENT TRANSPORTATION SYSTEM SITE 18	L.S.	1

KANSAS DEPARTMENT OF TRANSPORTATION
 SITE 18
 US-54 FIBER OPTIC PLAN
 SHEET 1 OF 4