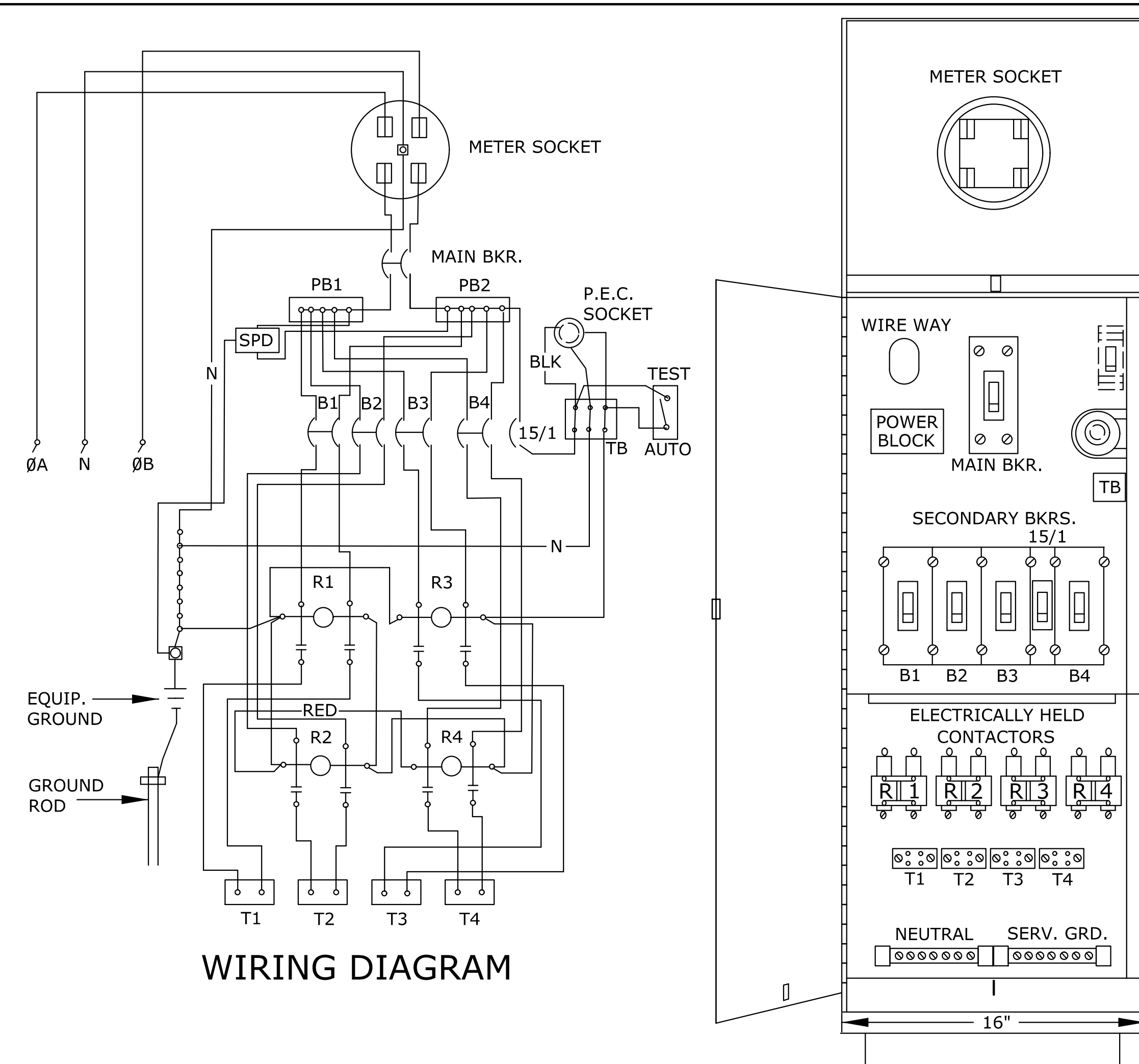


STATE	PROJECT NO.	YEAR	SHEET NO.	TOTAL SHEETS
KANSAS	87 N-0673-01	2017	64	99



WIRING DIAGRAM

FRONT VIEW

NOTES:

THE ENCLOSURE CABINET SHALL BE CONSTRUCTED OF 5052 ALLOY ALUMINUM 0.125" THICK. THE CABINET SHALL BE OF CLEAN CUT DESIGN HAVING NO SHARP EDGES, CORNERS OR PROJECTIONS AND NEMA 3R CONSTRUCTION.

THE ENCLOSURE SHALL INCREASE IN SIZE WITH THE NUMBER OF CIRCUITS.

THE CUSTOMER DOOR SHALL BE HINGED THE FULL LENGTH OF THE DOOR AND HAVE SUITABLE MEANS OF HOLDING THE DOOR IN THE FULLY OPEN POSITION. PADLOCK BRACKET SHALL EXTEND THROUGH DOOR FOR SECURITY.

THE DEAD FRONT DOOR SHALL BE HINGED AND HAVE 3/4 TURN CLIPS OR OTHER SUITABLE MEANS OF LOCKING.

SERVICE ENTRANCE IN BACK OF ENCLOSURE SHALL HAVE A HINGED OR A LIFT OFF COVER WITH PAD LOCK PROVISIONS.

THE SECONDARY BREAKER FOR THE PHOTO-CELL CIRCUIT SHALL BE 277 VOLT, 15 AMP SINGLE POLE.

THE WIRING FROM PB1 AND PB2 TO T1 THROUGH T4 SHALL BE NO. 6 A.W.G. THW.

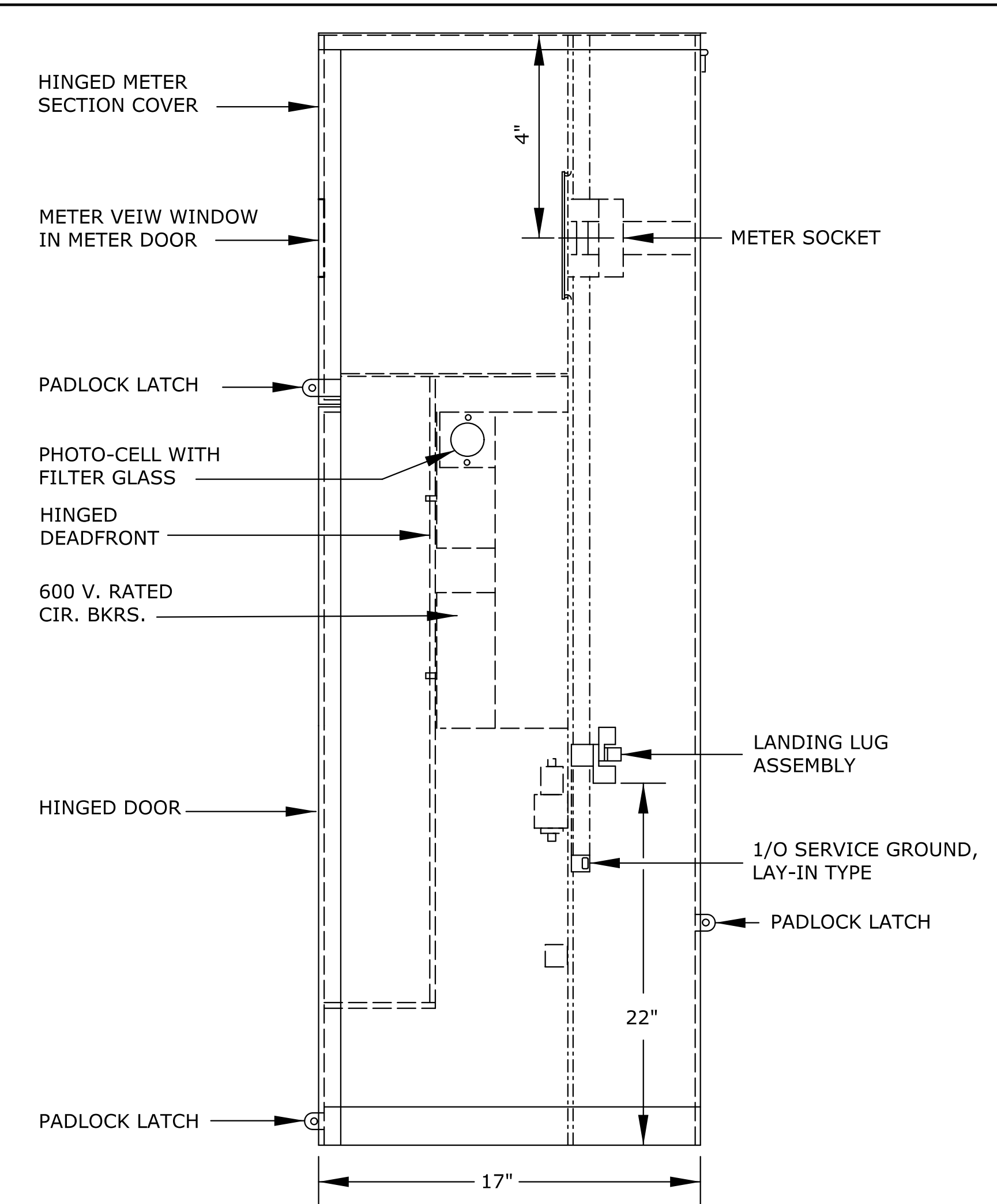
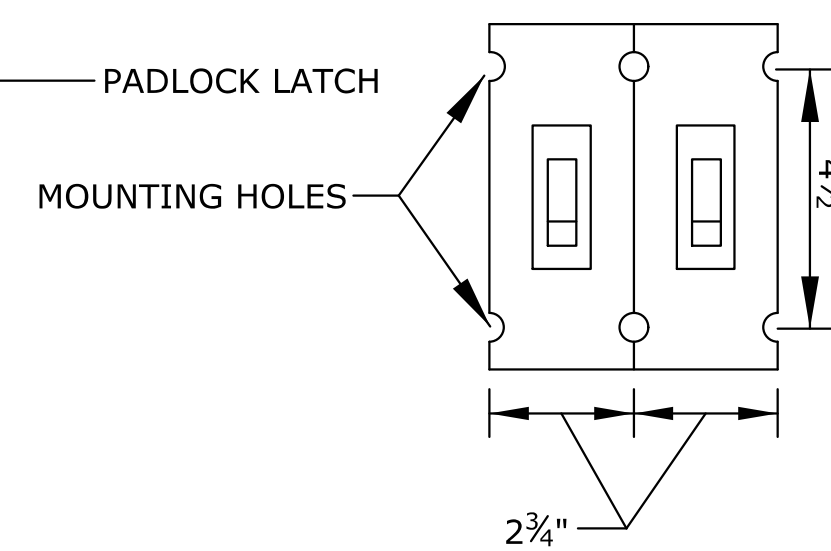
THE WIRING FOR THE LOAD AND LINE SIDE OF THE MAIN BREAKER SHALL BE THE SAME SIZE WITH THE WIRE.

THE WIRING FOR THE PHOTO ELECTRIC CONTROL CIRCUIT SHALL BE NO. 12 A.W.G. THW.

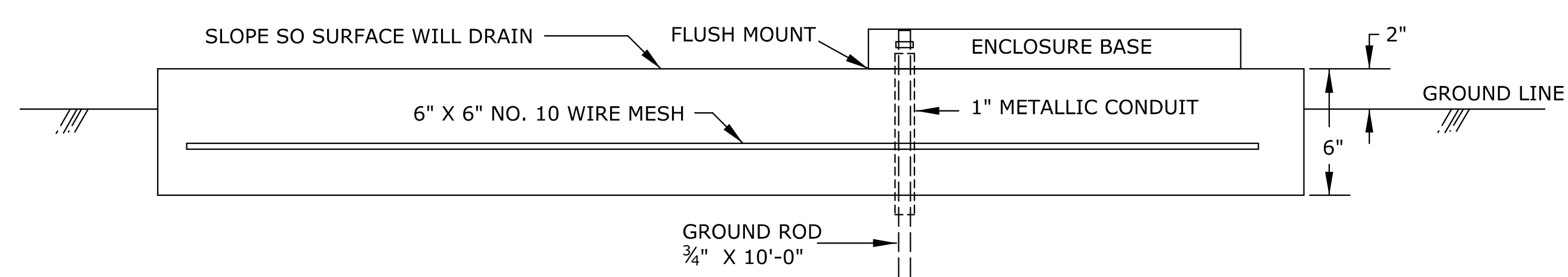
ALL WIRING AND WIRING METHODS SHALL COMPLY WITH THE MOST CURRENT NATIONAL ELECTRIC CODE STANDARDS. ANY CHANGES TO THESE STANDARDS SHALL BE APPROVED BY THE AUTHORITY HAVING JURISDICTION.

PROVIDE NATURAL ALUMINUM FINISH.

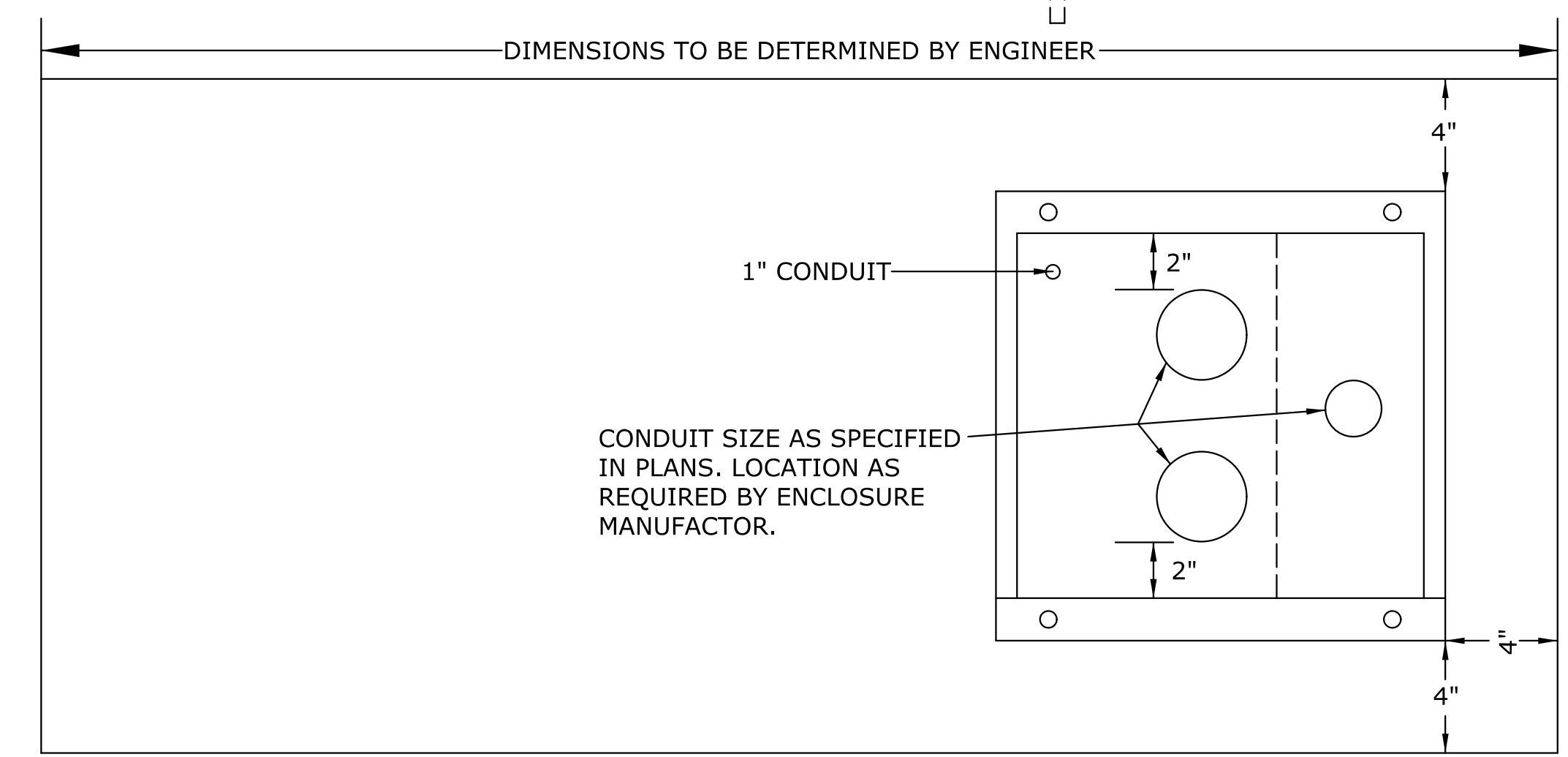
TYPICAL BREAKER DETAILS (2 POLE)



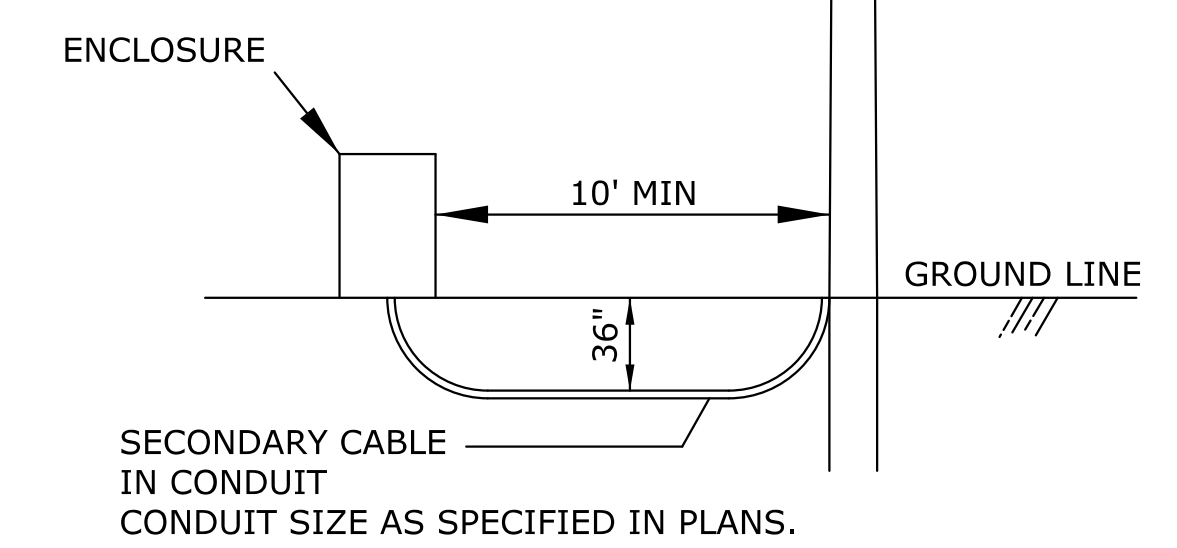
SIDE VIEW



NOTE: GROUND ROD SHALL EXTEND 2 INCHES ABOVE THE CONCRETE PAD INSIDE OF ENCLOSURE BASE.



TOP VIEW



POWER ARRANGEMENT

NOTE: POWER ARRANGEMENT SHALL MEET THE LOCAL UTILITY COMPANY SPECIFICATIONS.

NOTE: THE DUCT FOR SECONDARY CABLE SHALL EXTEND 1" PAST THE END OF THE CONDUIT BEND.

NOTE: ALL CONDUIT TO EXTEND 1" MIN. ABOVE CONCRETE SURFACE.

PAD DIMENSIONS SHALL BE ADJUSTED ACCORDINGLY FOR THE WIDTH OF THE ENCLOSURE TO BE INSTALLED.

10/29/2014 ADDED PADLOCK AND NEMA 3R REQUIREMENTS
2/28/2014 SPD ADDED TO PROTECT LOAD SIDE CONDUCTORS

2	1/12/12	Add SEE PLAN SHEET, Chg'd TopView/Pwer Argm	C.E.	B.D.G.
1	8/20/08	Chg'd Mech. Held Contactors to Elec. Held	V.H.	C.A.L.
NO.	DATE	REVISIONS	BY	APP'D

KANSAS DEPARTMENT OF TRANSPORTATION
TYPICAL ENCLOSURE DETAILS

ITS-DIID	VERSION DATE: 05-29-17
DESIGNED	C.E. DETAILED
DESIGN CK.	B.D.G. DETAIL CK.
APP'D	BY
TRACED	BY
QUANTITIES	BY
QUAN. CK.	BY
TRACE CK.	BY

Plotted : 14-NOV-2017 10:55
 Drawn By : examples
 File : ITS-D11D.dgn