

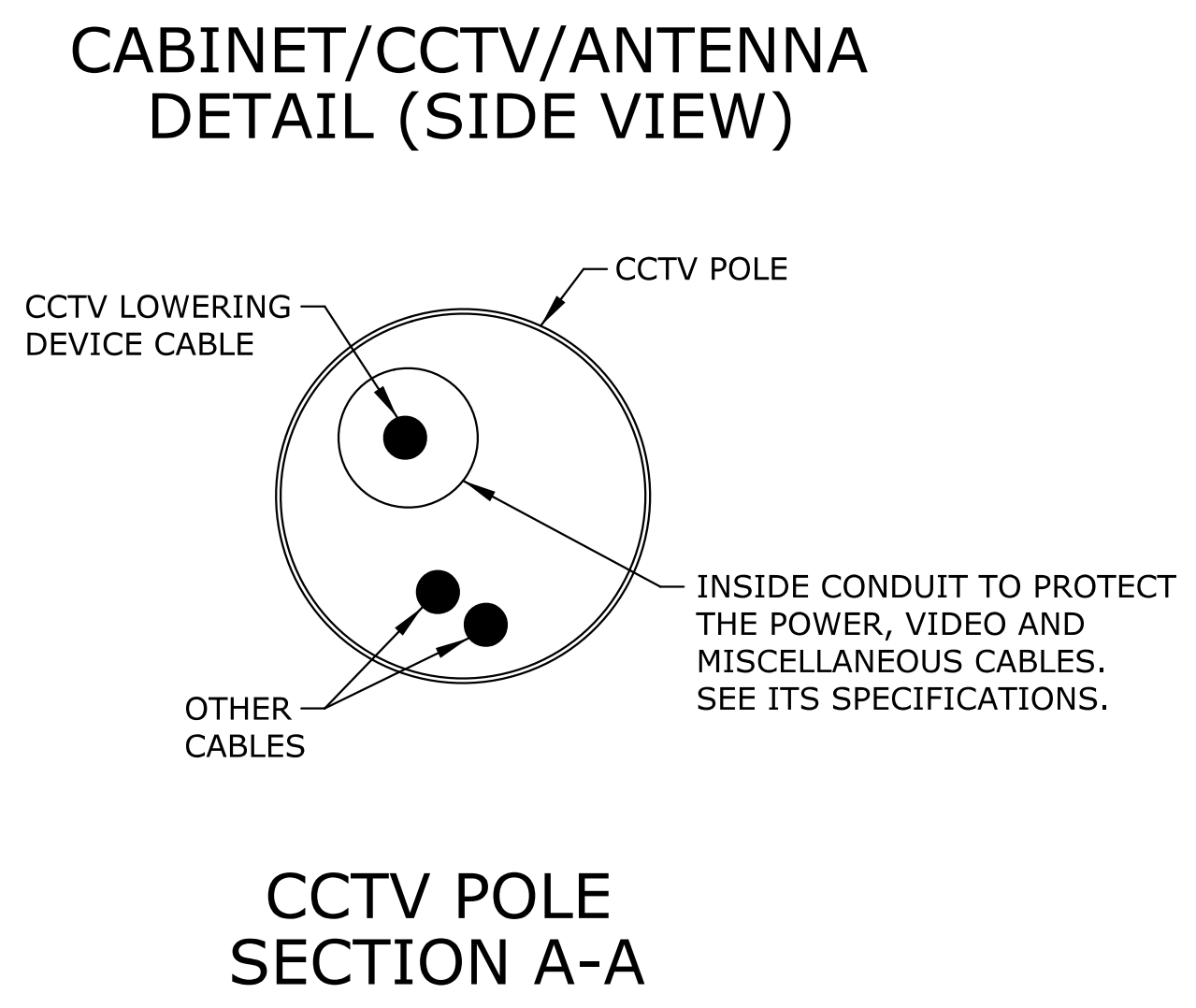
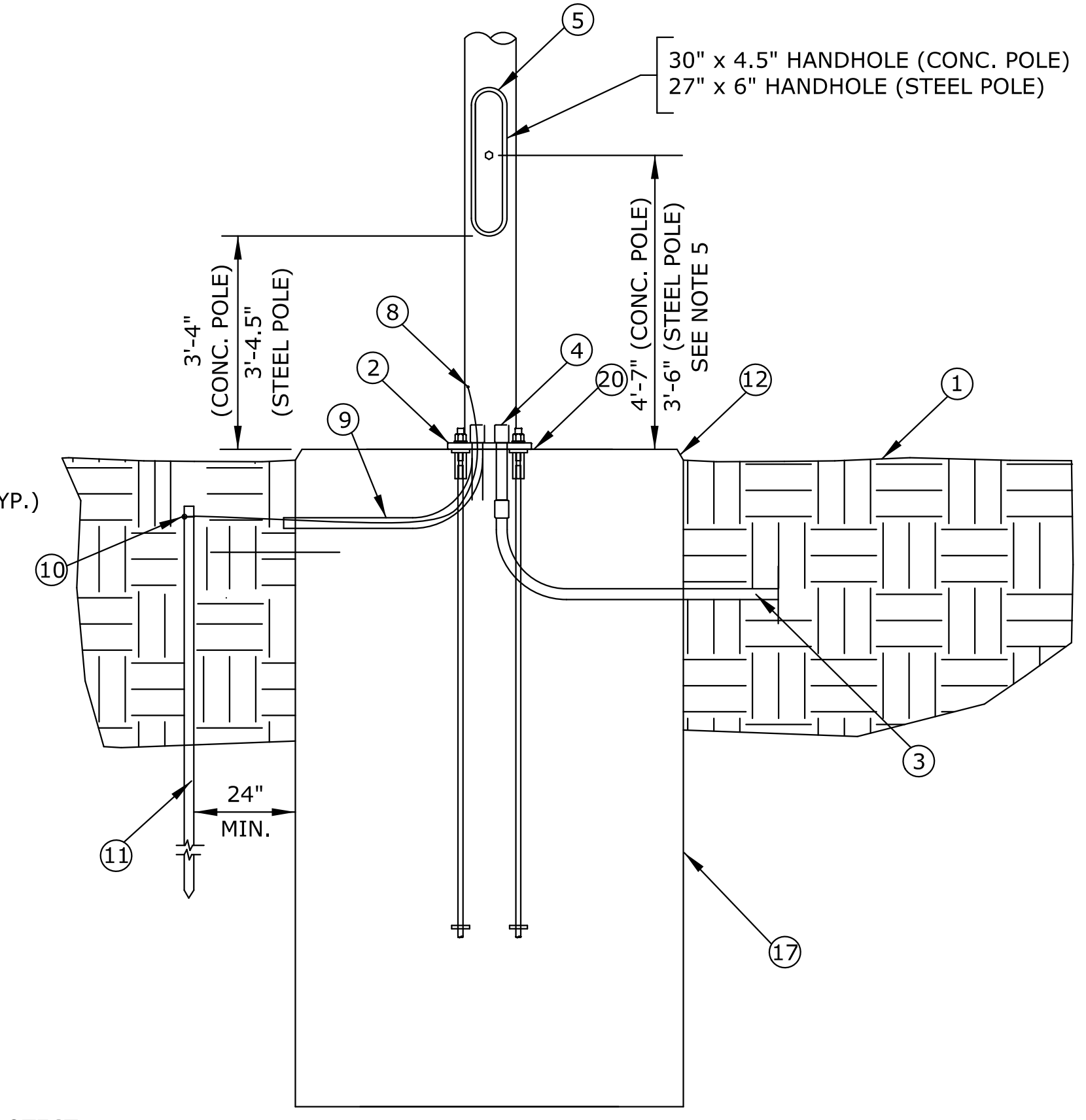
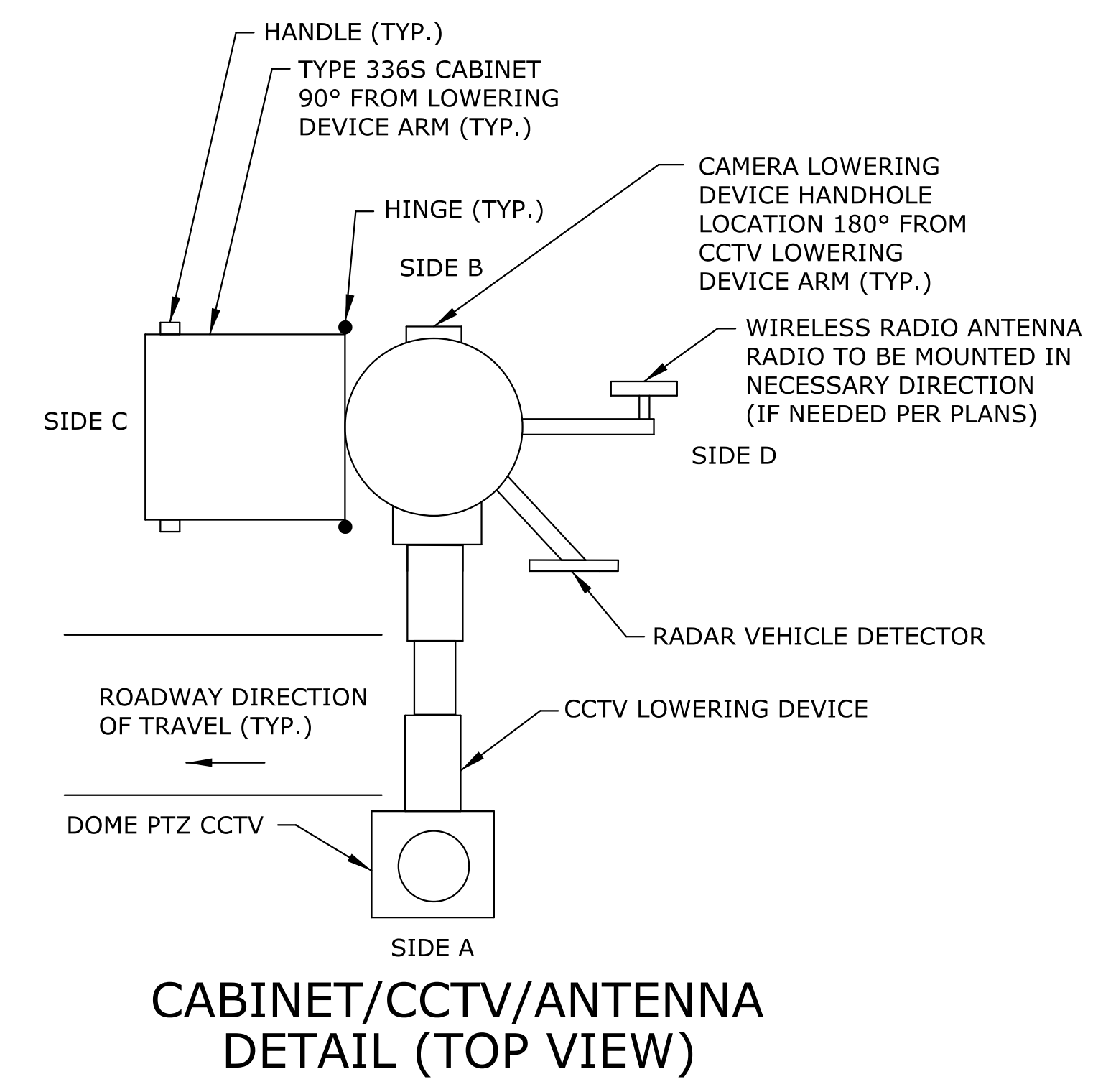
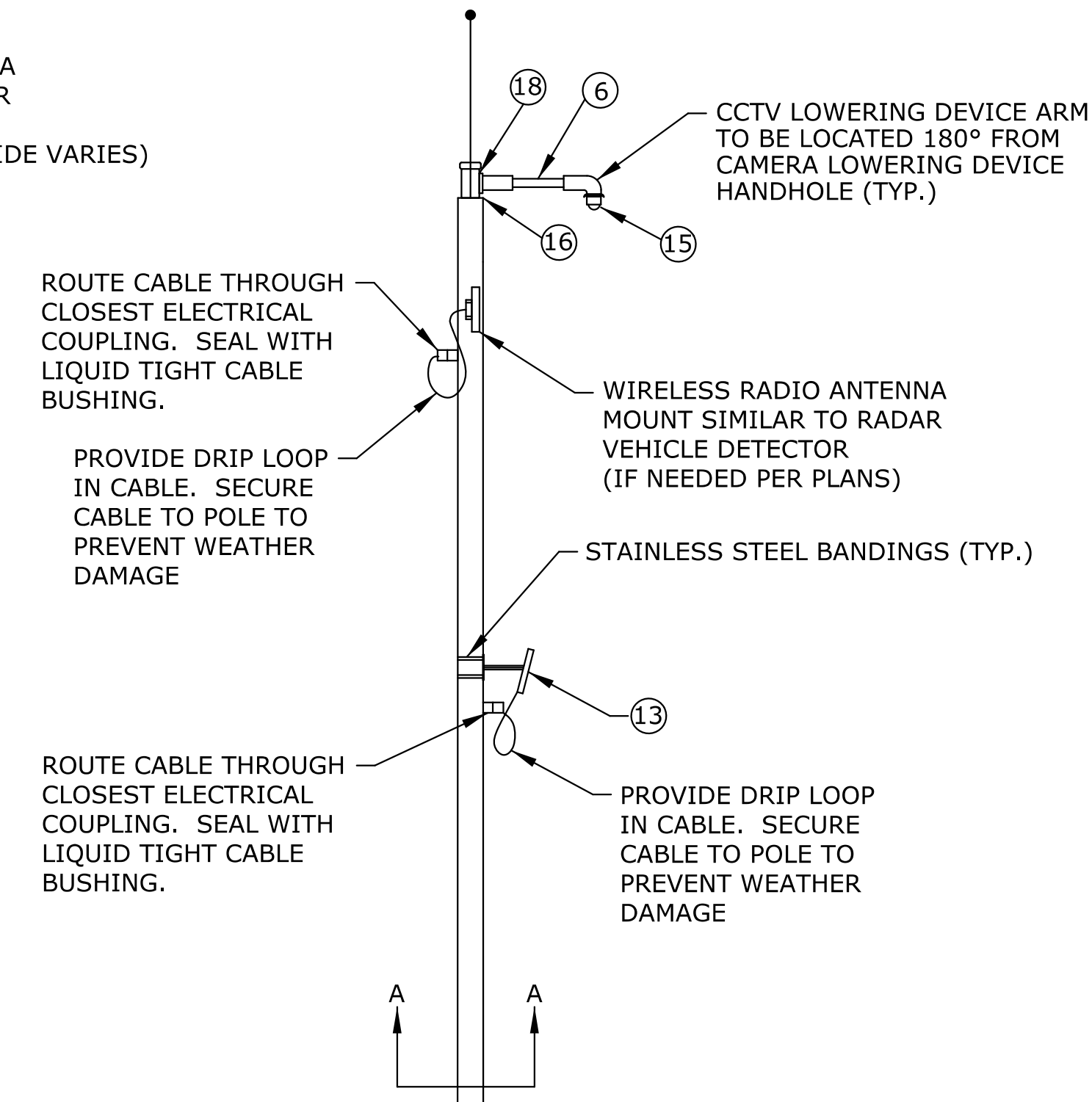
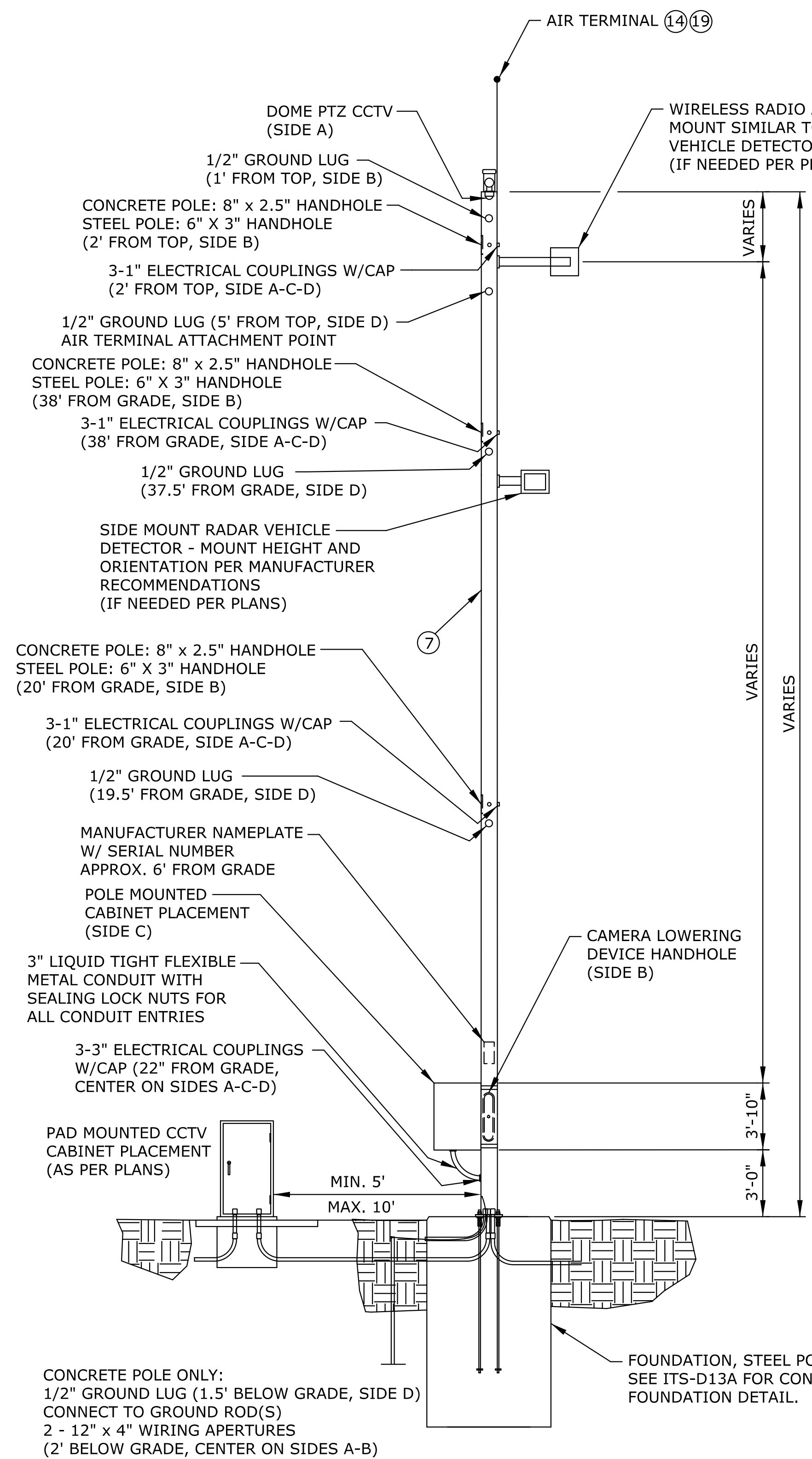
| STATE | PROJECT NO. | YEAR | SHEET NO. | TOTAL SHEETS |
|--------|--------------|------|-----------|--------------|
| KANSAS | 87 N-0673-01 | 2017 | 67 | 99 |

NOTES:

- ① FINISHED GRADE - SLOPE AWAY FROM POLE OR FOUNDATION.
- ② STEEL POLE: CONCRETE FOUNDATION, BASE PLATE LAYOUT AND ROD CIRCLE TO BE AS SHOWN ON STRUCTURAL DETAILS.
- ③ SEE PLANS FOR CONDUIT SIZE AND QUANTITY.
- ④ STEEL POLE: CONDUIT END BELL. CONDUIT SHALL PROJECT A MINIMUM OF 2 IN AND A MAXIMUM OF 4 IN ABOVE BOTTOM OF BASE PLATE.
- ⑤ HAND HOLES SHALL HAVE A HINGED COVER. DIMENSIONS ARE AS NOTED.
- ⑥ PROVIDE AND INSTALL CCTV DOME CAMERA HOUSING AND LOWERING DEVICE AS CALLED FOR ON PLANS AND THE EQUIPMENT SPECIFICATIONS.
- ⑦ CCTV POLE. HEIGHT AS INDICATED ON PLANS.
- ⑧ STEEL POLE: GROUNDING LUG, CONNECT GROUNDING CONDUCTOR TO POLE AND BUSHINGS. CLEAN GALVANIZATION FROM GROUND LUG AREA.
- ⑨ PROVIDE A MINIMUM NO. 2 COPPER GROUNDING CONDUCTOR FROM POLE TO GROUNDING ROD(S).
- ⑩ CONNECTION TO GROUNDING ROD(S) SHALL BE EXOTHERMIC.
- ⑪ PROVIDE 3/4 IN X 10 FT SOLID COPPER GROUNDING ROD(S). REFER TO EQUIPMENT SPECIFICATIONS FOR ADDITIONAL REQUIREMENTS.
- ⑫ STEEL POLE: FOUNDATION HEIGHT ABOVE FINISHED GRADE SHOULD BE 6 TO 8 IN.
- ⑬ PROVIDE AND INSTALL RADAR VEHICLE DETECTOR UNIT AS CALLED FOR IN THE PLANS. THE DETECTOR UNIT SHALL BE BANDED TO THE STRUCTURE.
- ⑭ PROVIDE AND INSTALL AIR TERMINAL AND ATTACH TO POLE GROUND WIRE (IF REQUIRED). AIR TERMINAL SHALL BE A MINIMUM OF 5 FT LENGTH ABOVE TOP OF POLE AND 5 FT LENGTH ATTACHED TO POLE (TOTAL LENGTH OF 10 FT) AND SHALL BE LOCATED AND SIZED TO ADHERE TO THE 150 FT RADIUS ROLLING SPHERE MODEL AS DESCRIBED IN NFPA 780.
- ⑮ PROVIDE AND INSTALL DRIP SHIELD ACCORDING TO THE SPECIFICATIONS.
- ⑯ REMOVABLE POLE CAP SECURED WITH STAINLESS STEEL BOLTS. BOND METAL POLE CAP AND CCTV MOUNTING FRAME TO THE LIGHTNING PROTECTION SYSTEM USING A NO. 6 COPPER BONDING CONDUCTOR.
- ⑰ STEEL POLE: SEE STRUCTURAL DETAILS FOR FOUNDATION DIMENSIONS.
- ⑱ CONTRACTOR TO PROVIDE CABLE STRAIN RELIEF DEVICE IF NOT PROVIDED BY LOWERING DEVICE SUPPLIER.
- ⑲ PROVIDE A NO. 2 COPPER GROUNDING CONDUCTOR FROM AIR TERMINAL TO GROUNDING LUG AT BASE OF POLE IF POLE THICKNESS IS LESS THAN 3/16 IN OR NOT METAL PER NFPA 780.
- ⑳ STEEL POLE: INSTALL 18 GAUGE WIRE MESH AROUND POLE BASE, IF GAP EXISTS BETWEEN POLE AND BASE. SECURELY ATTACH TO POLE AND EMBED IN CONCRETE.

GENERAL NOTES:

1. DESIGN SPECIFICATIONS: AASHTO STANDARD SPECIFICATIONS FOR STRUCTURAL SUPPORTS FOR HIGHWAY SIGNS, LUMINARIES, AND TRAFFIC SIGNALS; CURRENT EDITION.
2. CCTV CAMERA DETAIL APPLIES TO BOTH CONCRETE AND METAL POLES.
3. THE EXACT LOCATION OF ALL EQUIPMENT SHALL BE VERIFIED IN THE FIELD WITH THE ENGINEER PRIOR TO INSTALLATION.
4. POLE DIMENSIONS NOT SHOWN SHALL BE AS DETERMINED BY THE MANUFACTURER. CONTRACTOR SHALL OBTAIN APPROVED SUBMITTALS PRIOR TO PURCHASE OR FABRICATION. SHOP DRAWINGS SHALL BE SEALED BY A PROFESSIONAL ENGINEER LICENSED IN THE STATE OF KANSAS, AND SHALL BE APPROVED IN WRITING BY THE ENGINEER PRIOR TO ORDERING MATERIALS.
5. WHERE APPLICABLE, CCTV CAMERA POLE FOUNDATION SHALL BE LOCATED AT LEAST 7 FT AWAY FROM AND BEHIND GUARDRAIL.
6. CAMERA LOWERING DEVICE HANDHOLE IS TO BE INSTALLED 180° FROM THE CCTV LOWERING DEVICE ARM. POLE MOUNTED CABINET IS TO BE INSTALLED 90° FROM THE CCTV LOWERING DEVICE ARM (TYP.).
7. SEE STEEL POLE FOUNDATION DETAIL FOR ANCHOR ROD FASTENER ASSEMBLY.



Plotted : 14-NOV-2017 10:55
 Drawn By : examples
 File : ITS-D13.dgn

| KANSAS DEPARTMENT OF TRANSPORTATION | | | |
|---|----------|------------------------|-----------|
| CCTV CAMERA POLE DETAIL CONCRETE AND STEEL | | | |
| ITS-D13 | | VERSION DATE: 05-29-17 | |
| APP'D | DESIGNED | QUANTITIES | TRACED |
| | DETAIL | QUAN. CK. | TRACE CK. |