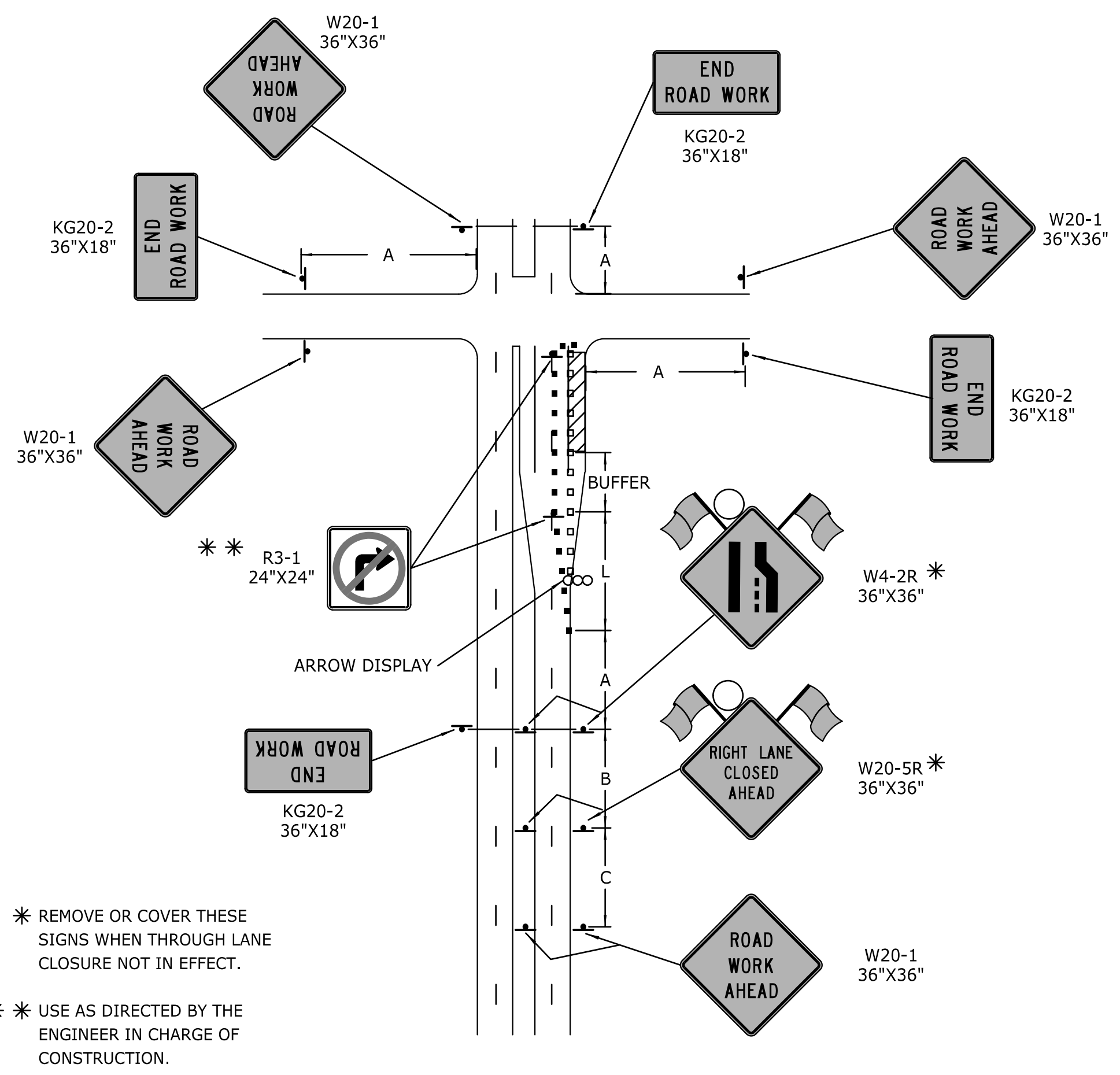


STATE	PROJECT NO.	YEAR	SHEET NO.	TOTAL SHEETS
KANSAS	87 N-0673-01	2017	97	99

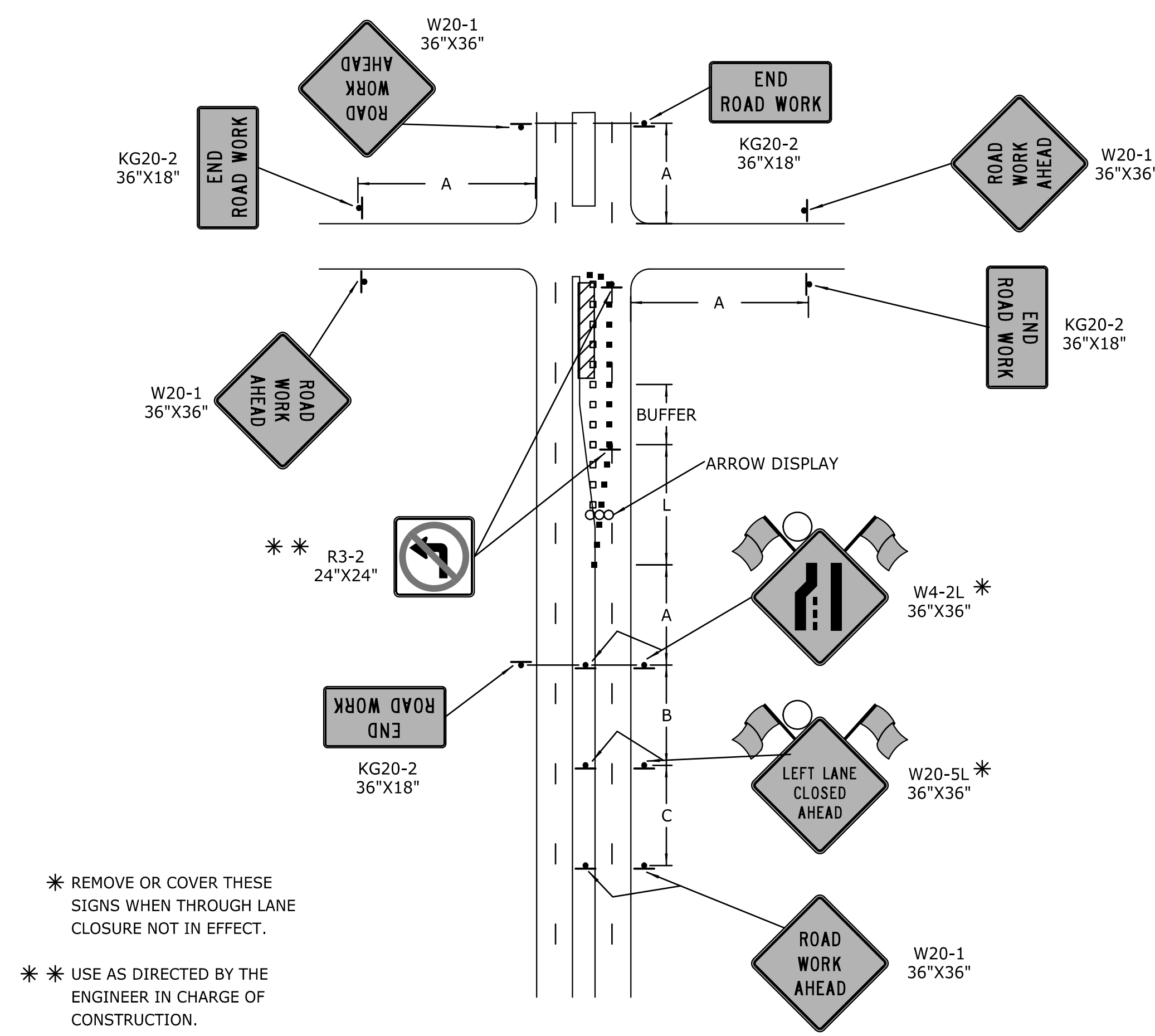
DATE	BY

Drawn By : examples
 Plotted : 11/14/2017
 File : c:\transystems\pw_local\transyscorp-pw\ccbank\d0521528\C-TCP-M01-501.dgn



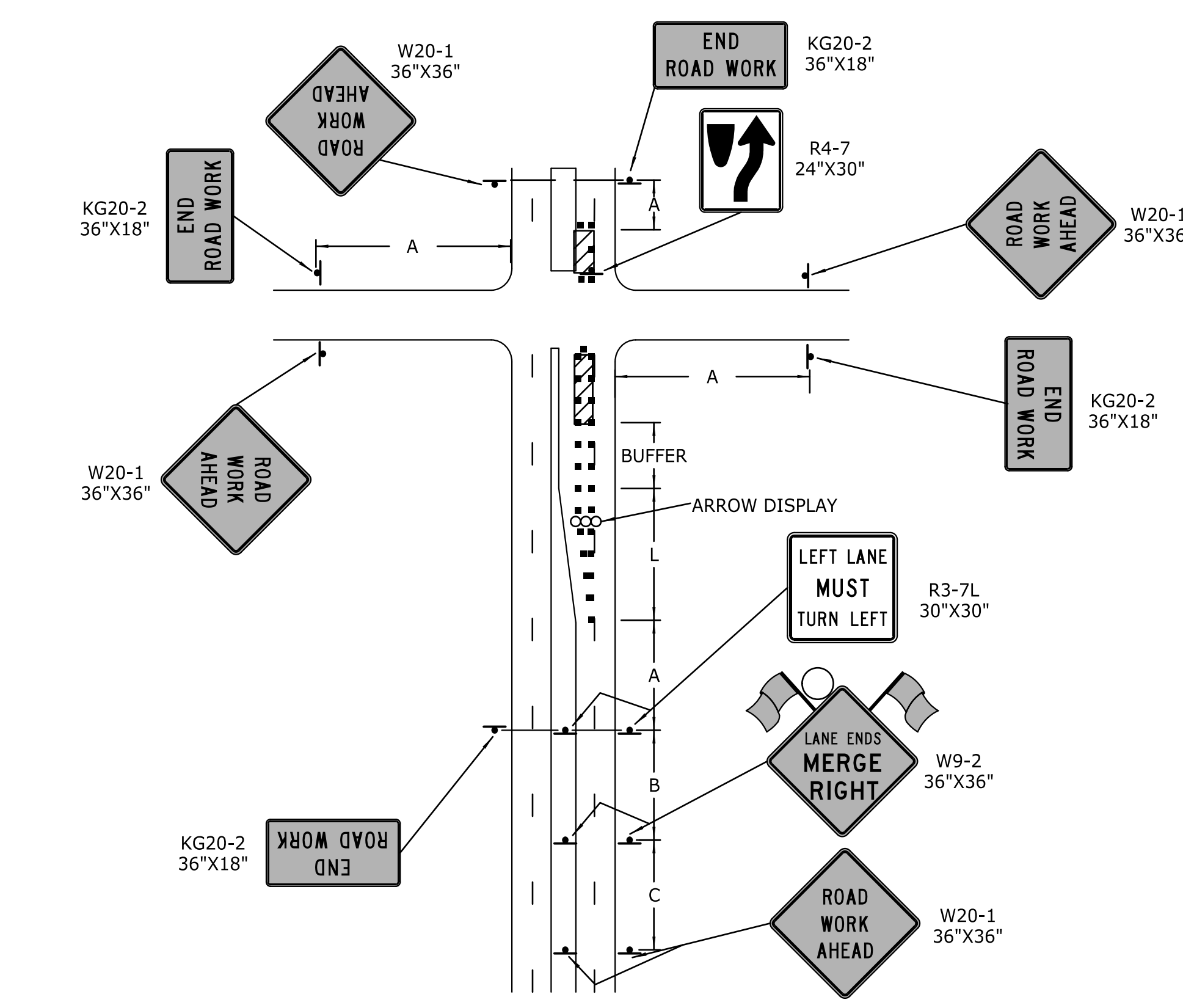
* REMOVE OR COVER THESE SIGNS WHEN THROUGH LANE CLOSURE NOT IN EFFECT.
 ** USE AS DIRECTED BY THE ENGINEER IN CHARGE OF CONSTRUCTION.

RIGHT-TURN LANE CLOSURE ON DIVIDED ROADWAY

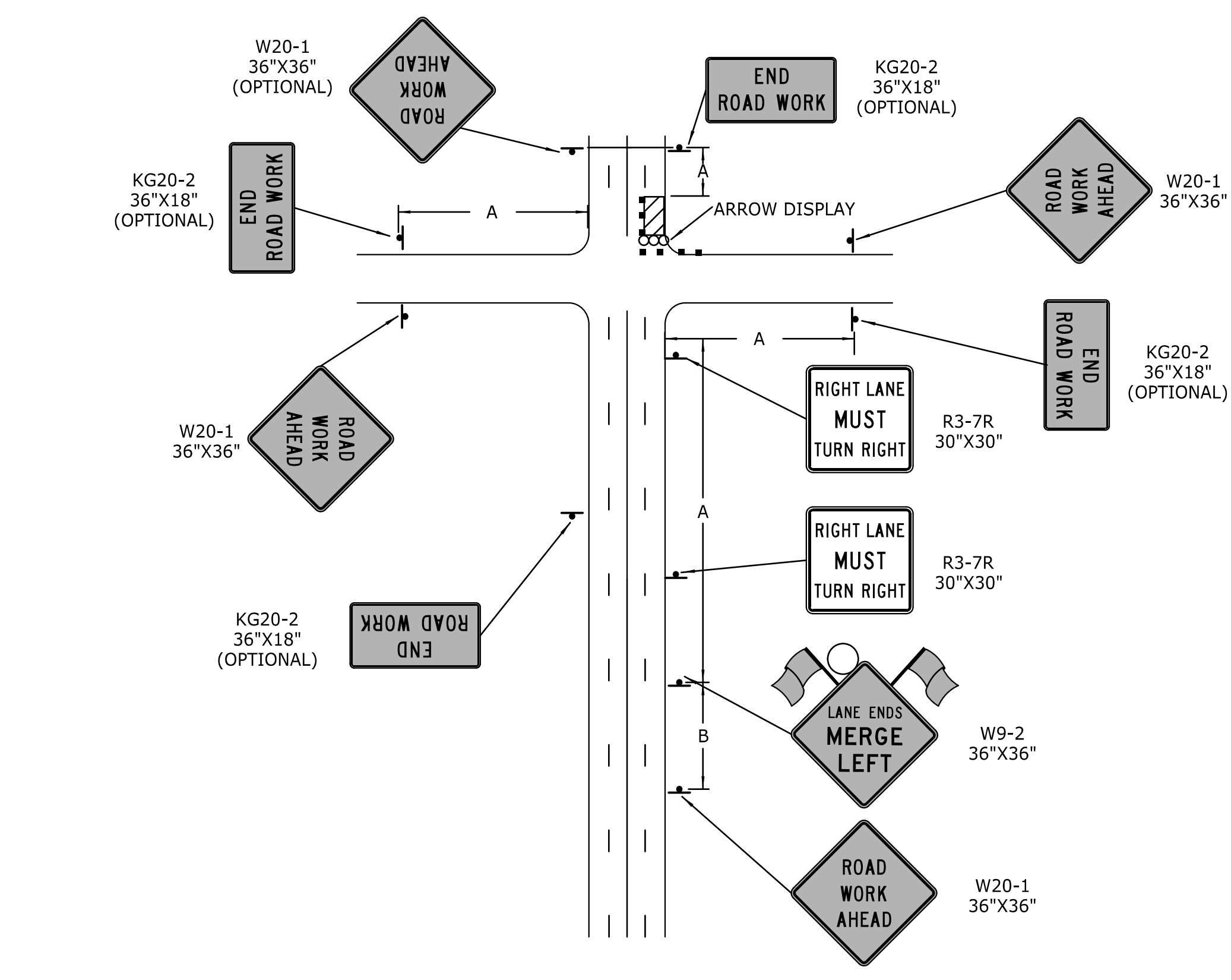


* REMOVE OR COVER THESE SIGNS WHEN THROUGH LANE CLOSURE NOT IN EFFECT.
 ** USE AS DIRECTED BY THE ENGINEER IN CHARGE OF CONSTRUCTION.

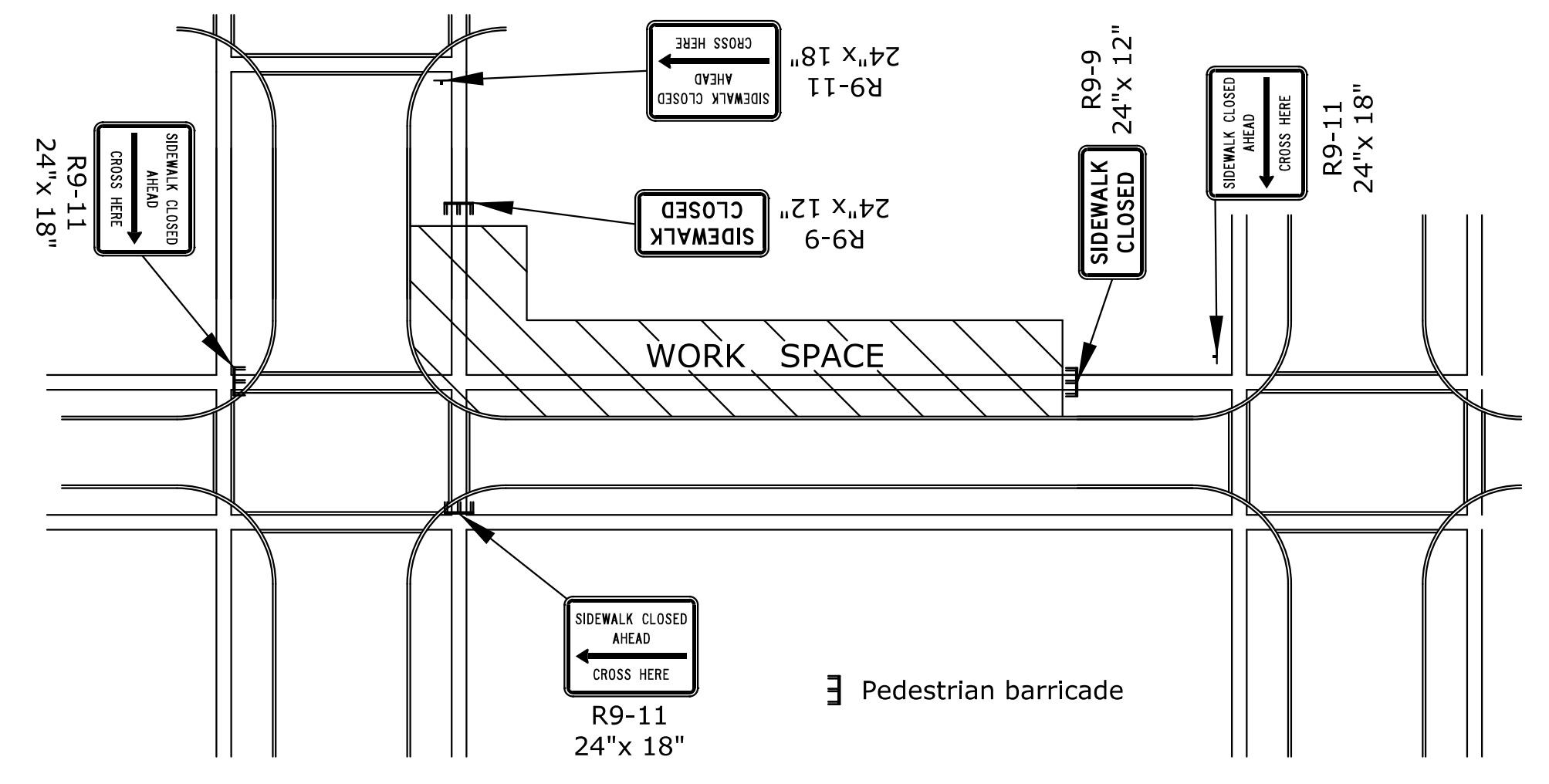
LEFT-TURN LANE CLOSURE ON DIVIDED ROADWAY



LANE CLOSURE ADJACENT TO LEFT-TURN BAY (ON DIVIDED ROADWAY)



RIGHT-HAND LANE CLOSURE ON FAR SIDE OF AN INTERSECTION



TYPICAL SIGNING FOR SIDEWALK CLOSED WITH OPPOSITE SIDEWALK AVAILABLE

NOTES:

- ALL TRAFFIC CONTROL DEVICES SHALL CONFORM TO THE MANUAL ON UNIFORM TRAFFIC CONTROL DEVICES (MUTCD), LATEST EDITION.
- THE CONTRACTOR IS RESPONSIBLE FOR AVOIDING ANY AND ALL UTILITIES WHEN SETTING SIGN POSTS AND SHALL COORDINATE ACTIVITIES WITH ANY AND ALL UTILITY COMPANIES WHETHER THEIR FACILITY IS SHOWN ON THE PLANS OR NOT.
- THE CONTRACTOR SHALL BE RESPONSIBLE FOR MAINTAINING, POSITIONING, CLEANING AND/OR REPLACING ALL TRAFFIC CONTROL DEVICES ON AN AROUND-THE-CLOCK BASIS, WHETHER OR NOT WORK IS ACTIVELY BEING PURSUED. ANY DEFICIENCIES NOTED SHALL BE CORRECTED BY THE CONTRACTOR IMMEDIATELY.
- TRAFFIC CONTROL DEVICES NOT IN USE OR NOT APPLICABLE SHALL EITHER BE COVERED OR REMOVED FROM THE WORK AREA.
- FLASHING ARROW PANELS SHALL BE USED FOR ALL LANE CLOSURES ON MULTI-LANE STREETS BUT SHOULD NOT BE USED IN LIEU OF PROPER TRAFFIC CONTROL SIGNS, BARRICADES AND CHANNELIZATION DEVICES. PREFERRED PLACEMENT OF THE ARROW PANEL IS AS CLOSE TO THE BEGINNING OF THE TAPER AS POSSIBLE.
- WORK VEHICLES AND EQUIPMENT SHALL BE LOCATED WITH ADEQUATE CLEARANCE FROM THE TRAVELWAY SO THAT SIGHT DISTANCES ARE NOT RESTRICTED FOR DRIVERS OR PEDESTRIANS.
- THE CONTRACTOR SHALL BE RESPONSIBLE FOR KEEPING ALL TRAFFIC LANES FREE OF MUD AND OTHER CONSTRUCTION DEBRIS.
- SIGN SIZES SHOWN ARE MINIMUM SIZES. LARGER SIGNS MAY BE USED.

LEGEND

- ▬ CHANNELIZING DEVICE
- ▬ CHANNELIZING DEVICE DURING PERIODS WHEN ADJACENT LANE CLOSURE NOT REQUIRED
- ∞ ARROW DISPLAY
- ⬇️ TRAFFIC CONTROL SIGN
- # OMIT SIGNS SHOWN IN MEDIAN ON UNDIVIDED ROADWAYS

KANSAS DEPARTMENT OF TRANSPORTATION
 TRAFFIC CONTROL INTERSECTION