

SUMMARY OF TRAFFIC CONTROL DEVICES EACH PER DAY

MULTI. NO.	CONSTRUCTION SIGNS (EACH)		
	0-9.25	9.26-16.25	16.26 & OVER
W20-1		8	
W20-2		3	
W20-3		4	
W20-4		3	
R2-1	5		
R3-1	4		
R3-2	5		
R4-1	5		
R5-1	6		
R5-1a	5		
R6-1	9		
R2-5a	5		
R11-2		6	
R11-4		6	
W6-3		4	
G20-2		10	
M4-9L	3		
M4-10L	3		
SPECIAL SIGN			
A	2		
B	2		
C	5		
W1-8			
TOTAL	59	44	

Concrete Safety Barrier (Type I) (Temp) 40 Sections

DELINEATORS & CHANNELIZING DEVICES (EACH)					
CONSTRUCTION BARRICADES		REFLECTORIZED		OBJECT MARKERS	
TYPE I or II	TYPE III	DRUMS	CONES	TYPE II	VERTICAL PANELS
	4' TO 8'	9' TO 14'			SINGLE BACK TO BACK
10*	55		350		

* For use as directed by the Engineer

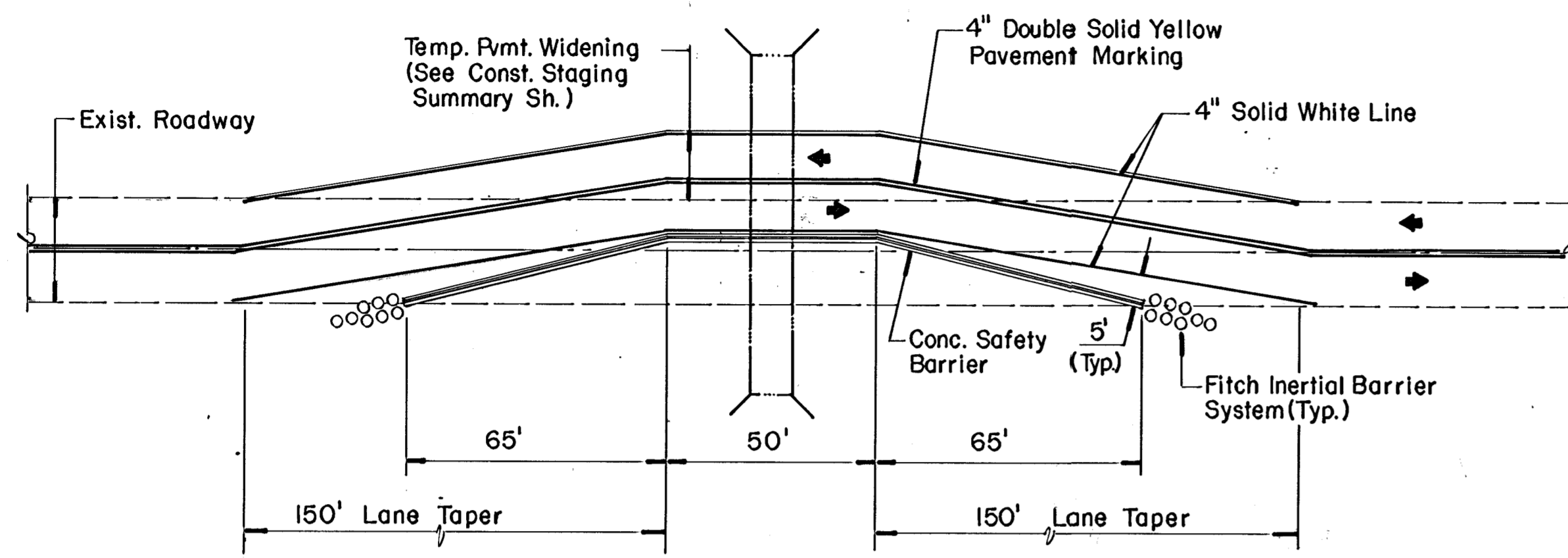
LIGHTING DEVICES (EACH)	
CONSTRUCTION WARNING LIGHT (TYPE B-HIGH INTENSITY)	55
ADVANCE WARNING FLASHING OR SEQUENCING ARROW PANELS	

Allow 6" Spacing between modules and 1' minimum between the modules and the end of the concrete barrier.

The Bid Item "Inertial Barrier System" shall include the original installation and any required relocations. (Include Modules as shown.)

Additional replacement modules shall be paid for at the unit price bid for EACH for the size and quantity shown in the Recap of Quantities (that are installed). The replacement modules shall be available to replace modules damaged while in use on the site, as directed by the Engineer. Modules not used during the course of the Project shall become the property of the City of Wichita. Any modules damaged by the Contractor during relocation of the Inertial Barrier System shall be replaced at the Contractor's expense.

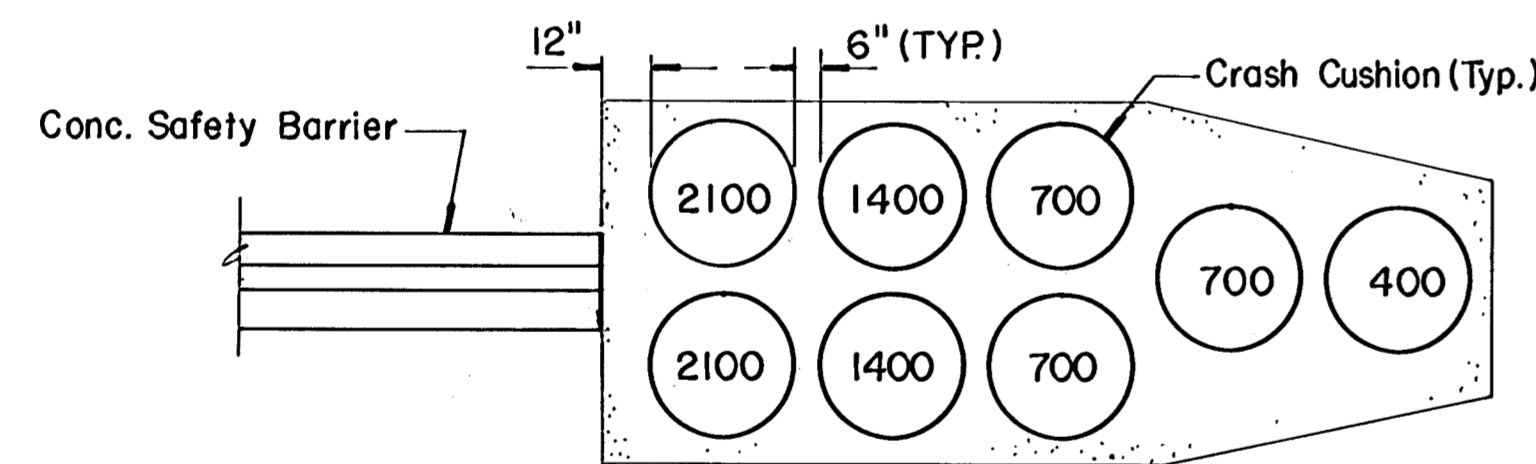
* Shall be paid at the invoice price plus any freight and handling costs. No percentage additive will be added to the material.



TYPICAL PLAN FOR RCB REMOVAL AND CONSTRUCTION

NOTE: USE W 20-7a SIGNS AND FLAGGERS AS REQUIRED THROUGHOUT PROJECT.

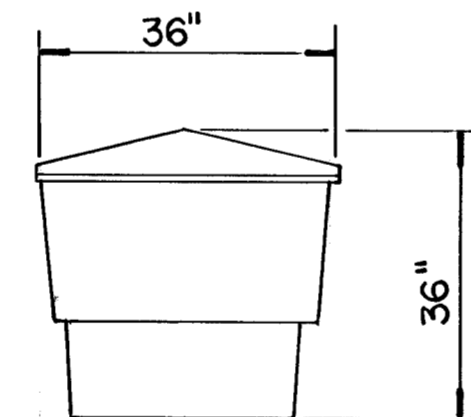
RECAPITULATION OF QUANTITIES		
ITEM	QUANTITY	UNIT
CONSTRUCTION SIGNS (0 TO 9.25 SQ. FT.)	10,178	EACH PER DAY
CONSTRUCTION SIGNS (9.26 TO 16.25 SQ. FT.)	7590	EACH PER DAY
CONSTRUCTION SIGNS (16.26 SQ. FT. AND OVER)		EACH PER DAY
CONSTRUCTION BARRICADES (TYPE I OR II)	1725	EACH PER DAY
CONSTRUCTION BARRICADES (TYPE III - 4 TO 8 LIN. FT.)	9488	EACH PER DAY
CONSTRUCTION BARRICADES (TYPE III - 9 TO 14 LIN. FT.)		EACH PER DAY
CONSTRUCTION WARNING LIGHT (TYPE "B" HIGH INTENSITY)	9488	EACH PER DAY
REFLECTORIZED DRUM	60,375	EACH PER DAY
ADVANCE WARNING FLASHING OR SEQUENCING ARROW PANEL		EACH PER DAY
REFLECTORIZED TEMPORARY PAVEMENT MARKING		
4" BROKEN LANE MARKING (PAINT OR TAPE)		PER STA./LINE
4" SOLID LANE MARKING (PAINT OR TAPE)		PER STA./LINE
4" BROKEN LANE MARKING (TYPE I)		PER STA./LINE
4" SOLID LANE MARKING (TYPE I)		PER STA./LINE
4" BROKEN LANE MARKING (TYPE II)		PER STA./LINE
4" SOLID LANE MARKING (TYPE II)	205	PER STA./LINE
TEMPORARY STRIPING (BIT. RESURFACING PROJECTS)		PER LINE/MILE
EXISTING PAVEMENT MARKING REMOVAL		LIN. FT.
TUBULAR MARKERS		EACH PER DAY
VERTICAL PANELS (SINGLE TYPE)		EACH PER DAY
VERTICAL PANELS (BACK TO BACK TYPE)		EACH PER DAY
OBJECT MARKERS		EACH PER DAY
CONCRETE SAFETY BARRIER (TEMP)		LIN. FT.
INERTIAL BARRIER SYSTEM	4	EACH
MODULE F 200		EACH
MODULE F 400	2	EACH
MODULE F 700	3	EACH
MODULE F 1400	2	EACH
MODULE F 2100	2	EACH
TRAFFIC CONTROL		LUMP SUM
TEMPORARY TRAFFIC SIGNAL INSTALLATION		LUMP SUM
CONCRETE SAFETY BARRIER (TYPE I) (TEMP)	6900	SECTIONS PER DAY



Notes:

- Numbers indicate pounds of dry sand in each Crash Cushion
- Place modules and Safety Barrier on 4" temporary asphalt surface where necessary.

TYPICAL FITCH INERTIAL BARRIER SYSTEM



TYPICAL CRASH CUSHION

NO.	DATE	REVISIONS	BY	APP'D
3	7-10-89	REVISED BID ITEMS	PR	AFT
2	12-19-88	Removed ref. to paint or tape	P.R.	A.F.T.
1	6-10-87	Added bid item	R.T.	A.F.T.

KANSAS DEPARTMENT OF TRANSPORTATION

TRAFFIC CONTROL PLAN AND SUMMARY OF DEVICES

STD NO. 751

1-5-79

DESIGNED	DATE	APP'D
DESIGN CR.	DETAIL CR.	QUAN. CR.
		TRACE CR.