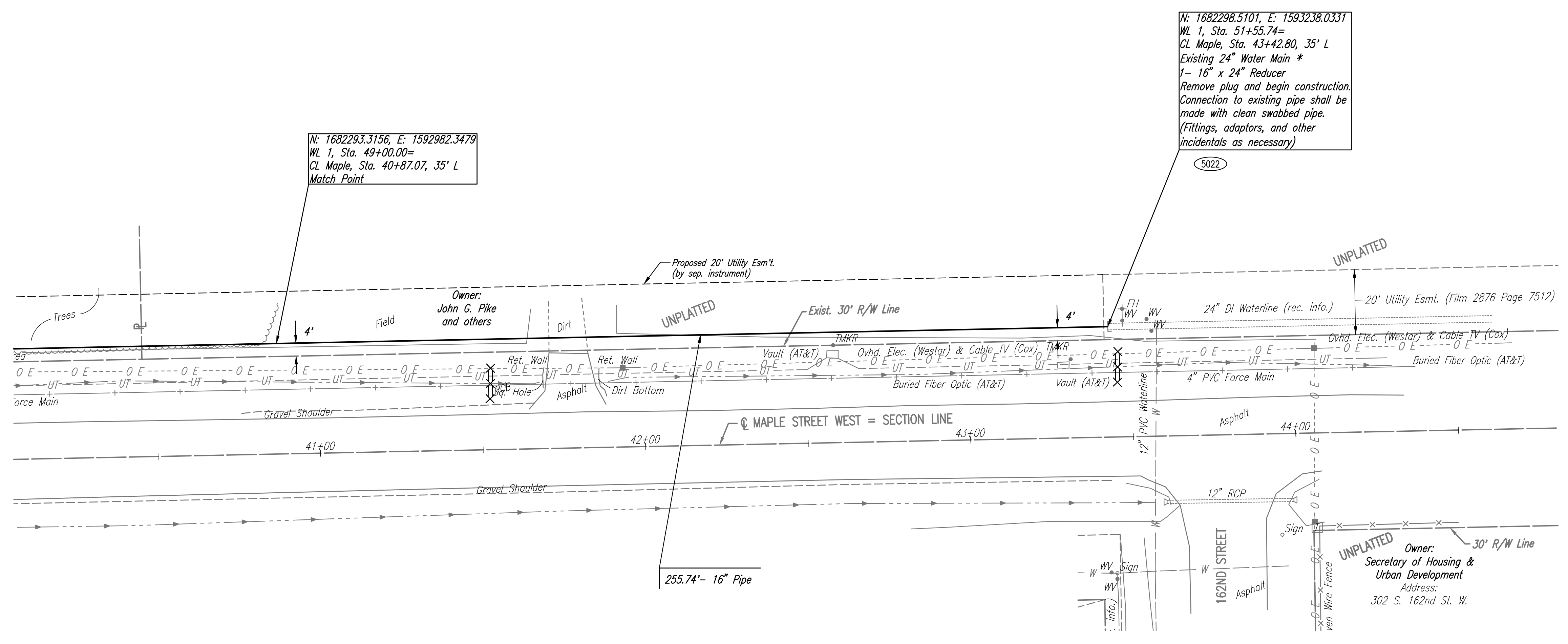
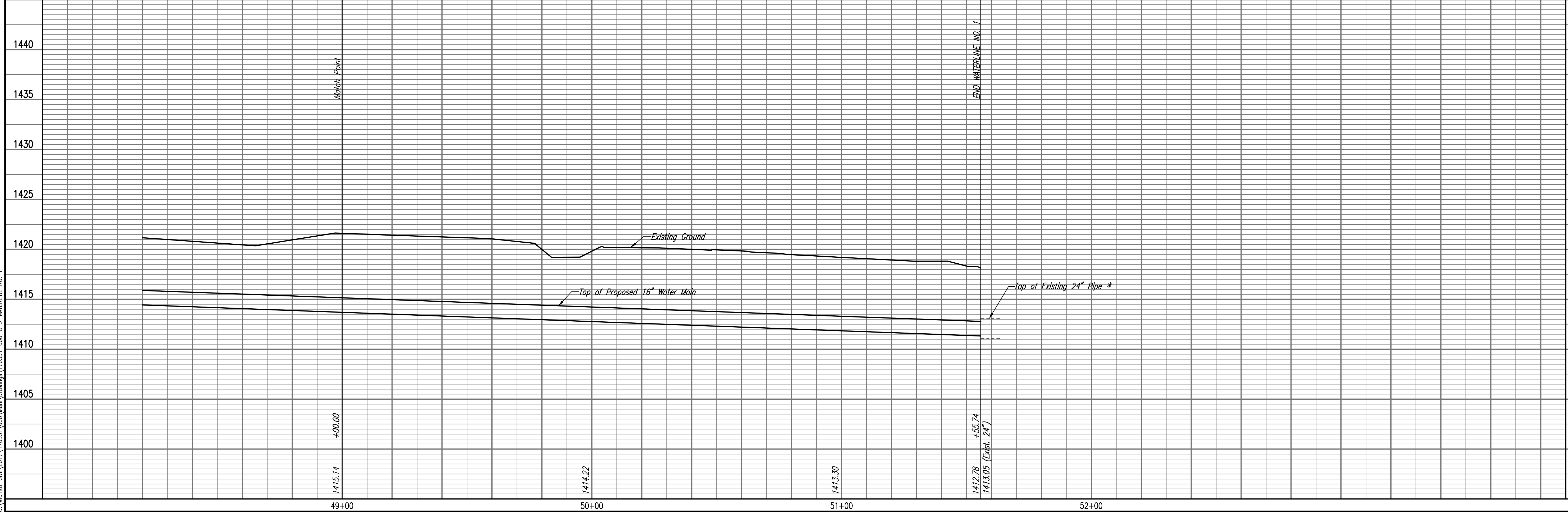


PLAN	CHECKED	DATE
	CHECKED	

PROFILE	CHECKED	DATE
	CHECKED	

Saved: 02-01-2018 9:57:13 AM by CSI  
 Plot Scale: 1" = 10'-0" (Horizontal) 1" = 10'-0" (Vertical)  
 U:\Projects\Civil\2017\70531\Drawings\170531-000-015-WATERLINE NO. 1

Unless noted otherwise, elevations shown are top of pipe



N: 1682298.5101, E: 1593238.0331  
 WL 1, Sta. 51+55.74=  
 CL Maple, Sta. 43+42.80, 35' L  
 Existing 24" Water Main \*  
 1- 16" x 24" Reducer  
 Remove plug and begin construction.  
 Connection to existing pipe shall be  
 made with clean swabbed pipe.  
 (Fittings, adaptors, and other  
 incidentals as necessary)

N: 1682293.3156, E: 1592982.3479  
 WL 1, Sta. 49+00.00=  
 CL Maple, Sta. 40+87.07, 35' L  
 Match Point

SCALE:  
 PLAN: LAT. & LONG. 0 20 40  
 PROFILE: HORIZ. SAME AS ABOVE  
 VERT. 0 5  
 (5000) - SEE SHEET NO. 3 FOR WATERLINE COORDINATES (TYP.)  
 ○—○ = SILT FENCE BARRIER  
 X—X—X = DITCH CHECKS

\* PRIOR TO BEGINNING CONSTRUCTION, THE CONTRACTOR SHALL EXCAVATE THE EXISTING 24" WATERLINE AT STATION 51+55.74 TO VERIFY PIPE SIZE, TYPE, FITTINGS, AND HORIZONTAL AND VERTICAL LOCATION. THE CONTRACTOR SHALL REPORT HIS FINDINGS TO THE ENGINEER SO THAT ANY NECESSARY PLAN MODIFICATIONS CAN BE MADE. ANY ADDITIONAL LABOR OR MATERIALS NECESSARY TO COMPLETE THE CONNECTION SHALL BE CONSIDERED SUBSIDIARY TO THE PROJECT.



WATERLINE NO. 1

16" WATERLINE ALONG MAPLE FROM 162ND TO 167TH STREET WEST AND 167TH STREET WEST FROM MAPLE TO APOLLO  
**WATERLINE NO. 1**  
 GARY JANZEN, P.E. - CITY ENGINEER  
 CITY OF WICHITA PROJECT NO. 448-90818  
 DESIGNED BY: JAG, TBK  
 DRAWN BY: CSL, KTD  
 JOB NO.: 35-170531-000-0042  
 DATE: August 2017  
**PEC**  
 PROFESSIONAL ENGINEERING CONSULTANTS, P.A.  
 303 SOUTH TOPEKA WICHITA, KS 67202  
 316-262-2691 www.pec1.com