

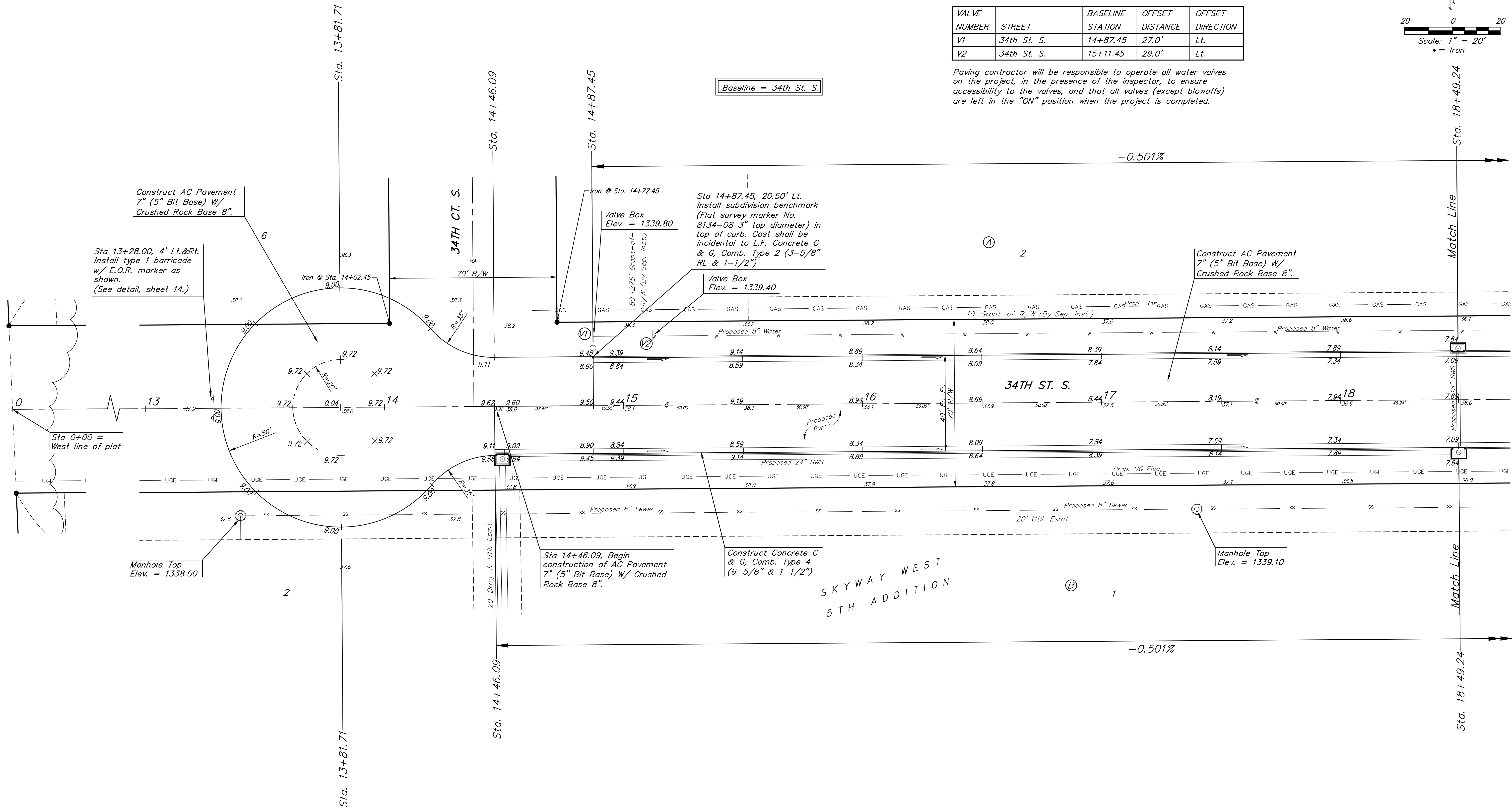
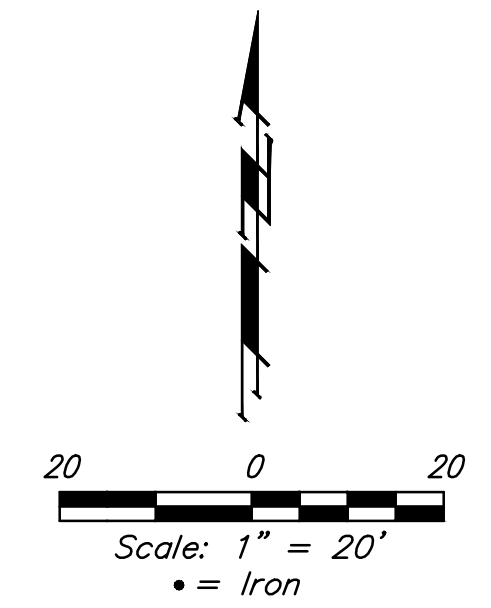
**BENCHMARK:**  
 BM #1: WEST OF INTERSECTION OF  
 MAIZE ROAD & 31ST STREET SOUTH,  
 CITY OF WICHITA BENCHMARK DISK,  
 SOUTHEAST CORNER OF HUBGUARD OF  
 R.C.B.C., 330.9' WEST & 16.8' SOUTH  
 OF THE NE COR., NE1/4, SEC. 7, TWP.  
 28-S, R-1-W. ELEV. = 1331.90  
 NAVD88

Subdivision Bench Marks		
Street & Station	Location Description	Elevation
34th St. S. 14+87.45, 20.25' Lt.	Adjacent to Fire Hydrant at E. End of E. Curb Return of 34th St. S. & 34th Ct. S.	

**WATER VALVE LOCATION TABLE**

VALVE NUMBER	STREET	BASELINE STATION	OFFSET DISTANCE	OFFSET DIRECTION
V1	34th St. S.	14+87.45	27.0'	Lt.
V2	34th St. S.	15+11.45	29.0'	Lt.

Paving contractor will be responsible to operate all water valves on the project, in the presence of the inspector, to ensure accessibility to the valves, and that all valves (except blowoffs) are left in the "ON" position when the project is completed.



SKYWAY WEST 5TH ADD. - PH 1  
**34TH ST. S.**  
 STA. 13+81.71 TO STA. 18+49.24  
 Baughman Company, P.A.  
 ENGINEERING, PLANNING, LANDSCAPE ARCHITECTURE  
 DESIGN, CONSTRUCTION ADMINISTRATION  
 1515 W. WILSON ST. STE. 200, WICHITA, KS 67202  
 (316) 261-1100  
 www.baughman.com  
 Date: 11/18/18  
 Drawn: TMS  
 Approved: [Signature]  
 Title: [Title]