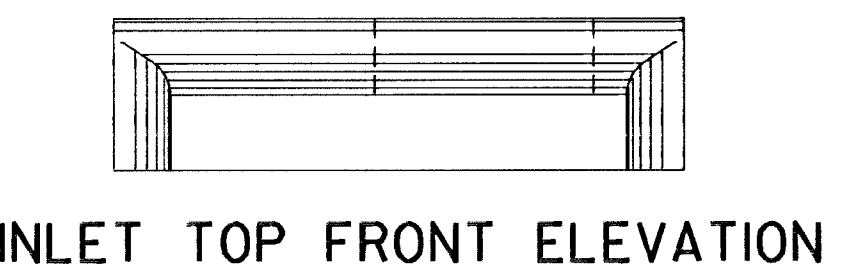
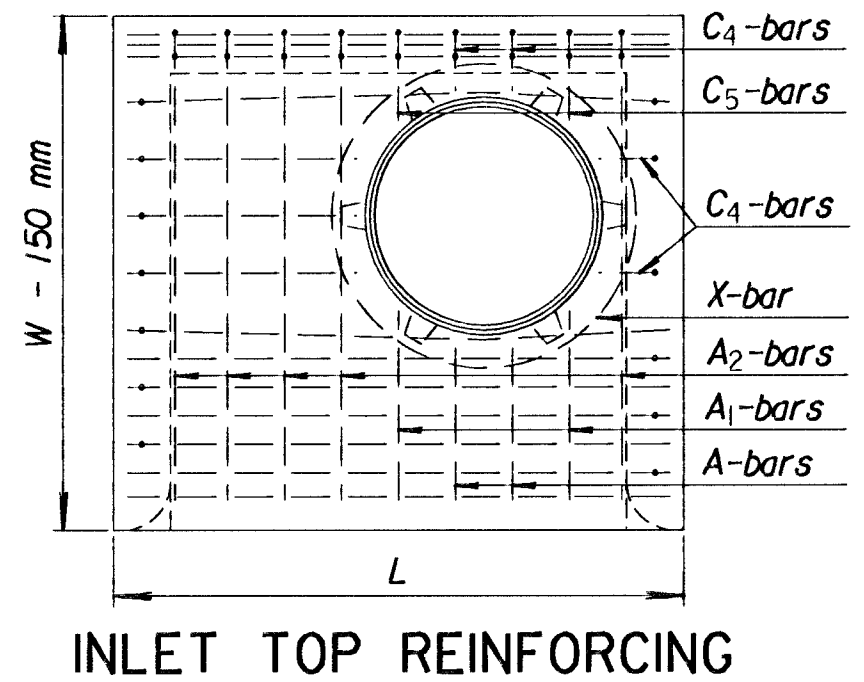
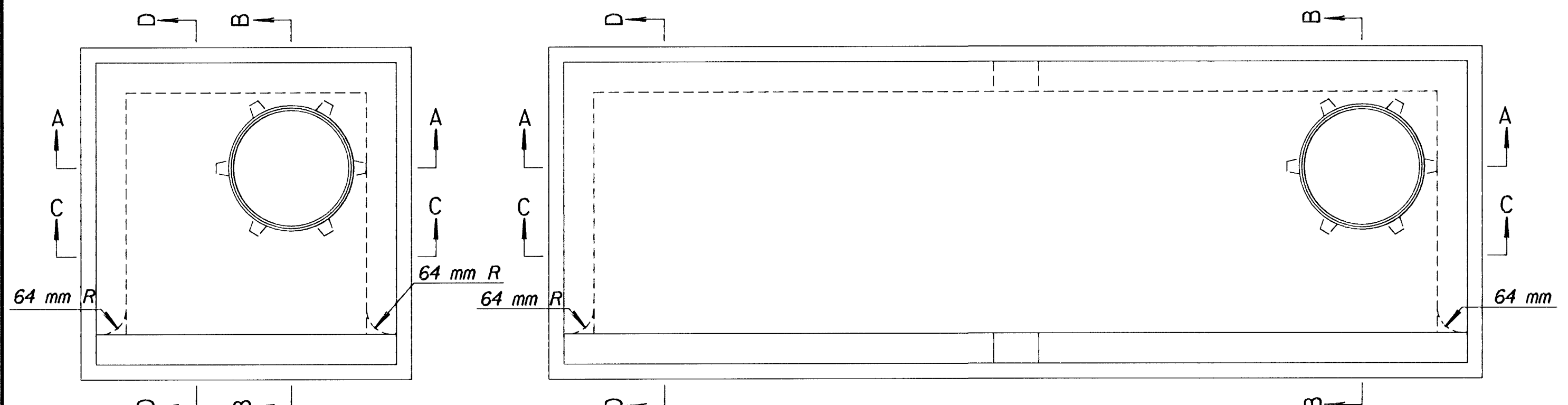


FHWA REGION NO.	STATE	PROJECT NO.	YEAR	SHEET NO.	TOTAL SHEETS
7	KANSAS	87 N-0092-01	1999	22	75



**GENERAL NOTES**

Use Class A Concrete throughout. All exposed edges shall be finished with an edging tool. Manhole opening and steps, where used shall be placed to afford easy access to top of shaped invert. All castings shall be grey iron and shall comply with the KDOT Standard Specifications. When so ordered by the Engineer, the top of the manhole shall be sloped slightly to approximately fit the ground line or other conditions.

Dimensions and masses of cast iron as shown on this sheet are minimum. Larger dimensions and/or masses of cast iron may be used. The mass of castings includes no allowance for fillets and overruns. Steps shall be installed in all storm sewer inlets when specified in the plans when "H" is equal to or greater than 1.8 m. Steps shall comply with the KDOT Standard Specification.

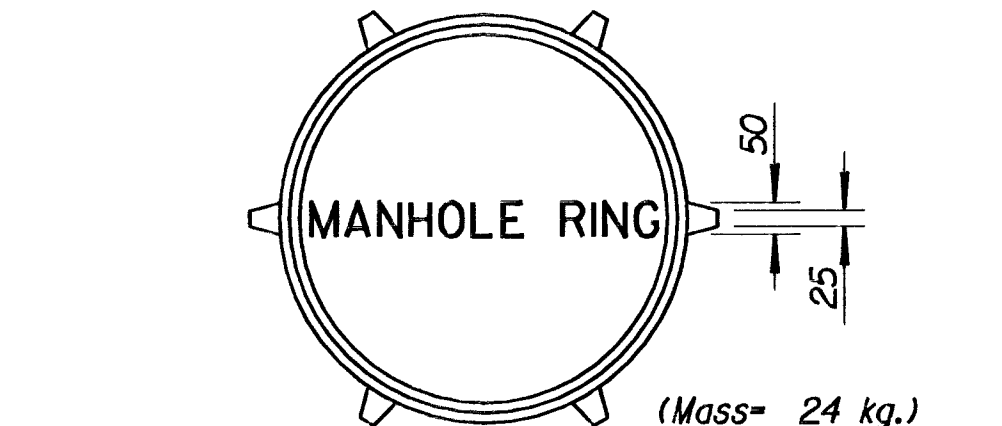
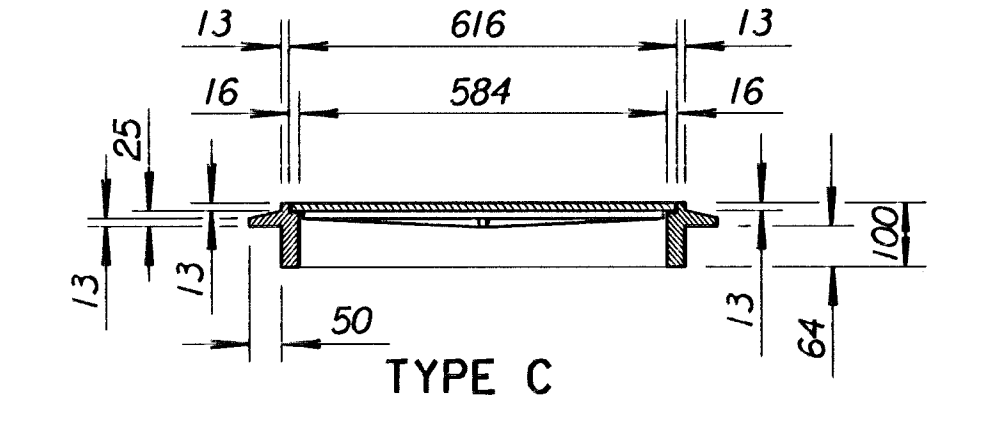
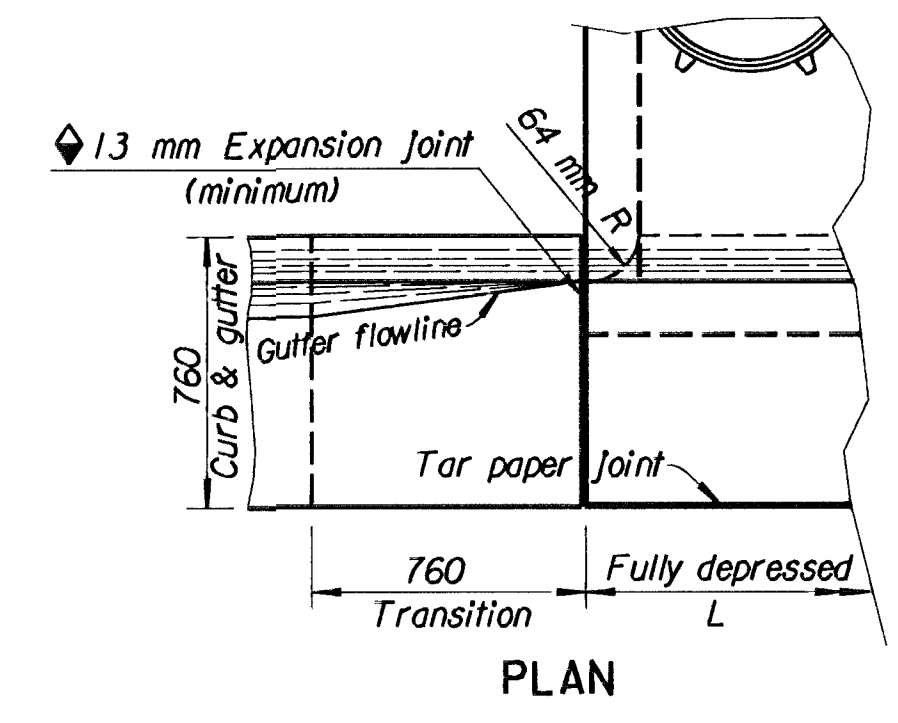
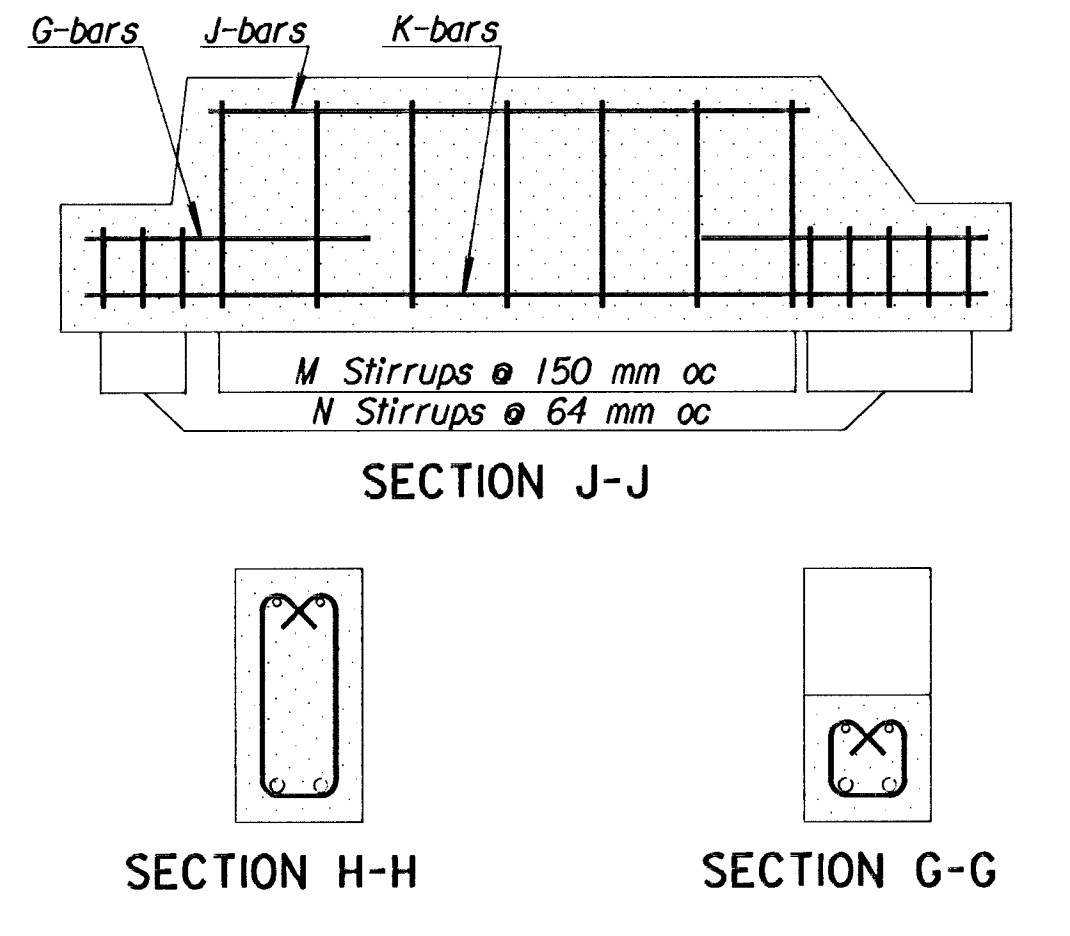
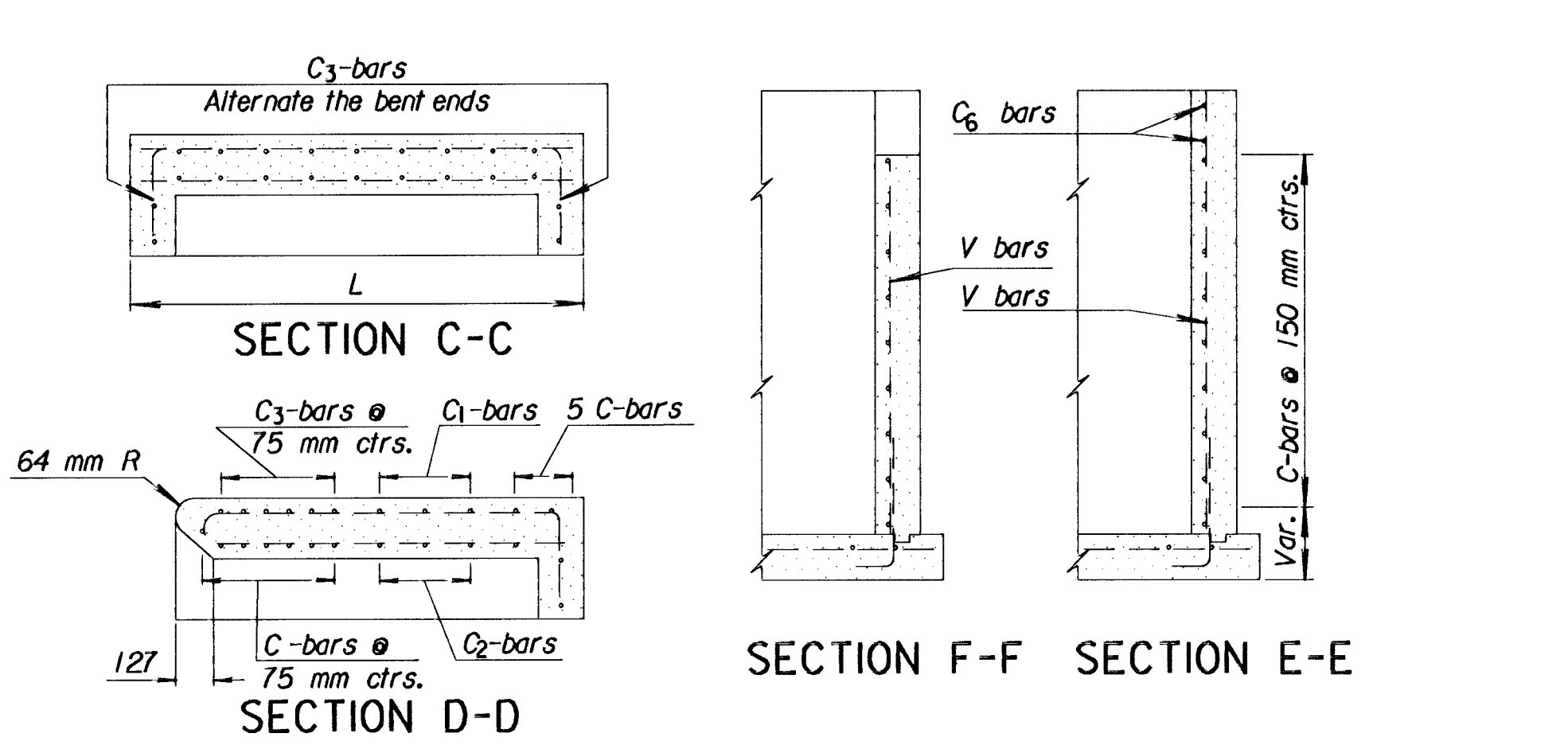
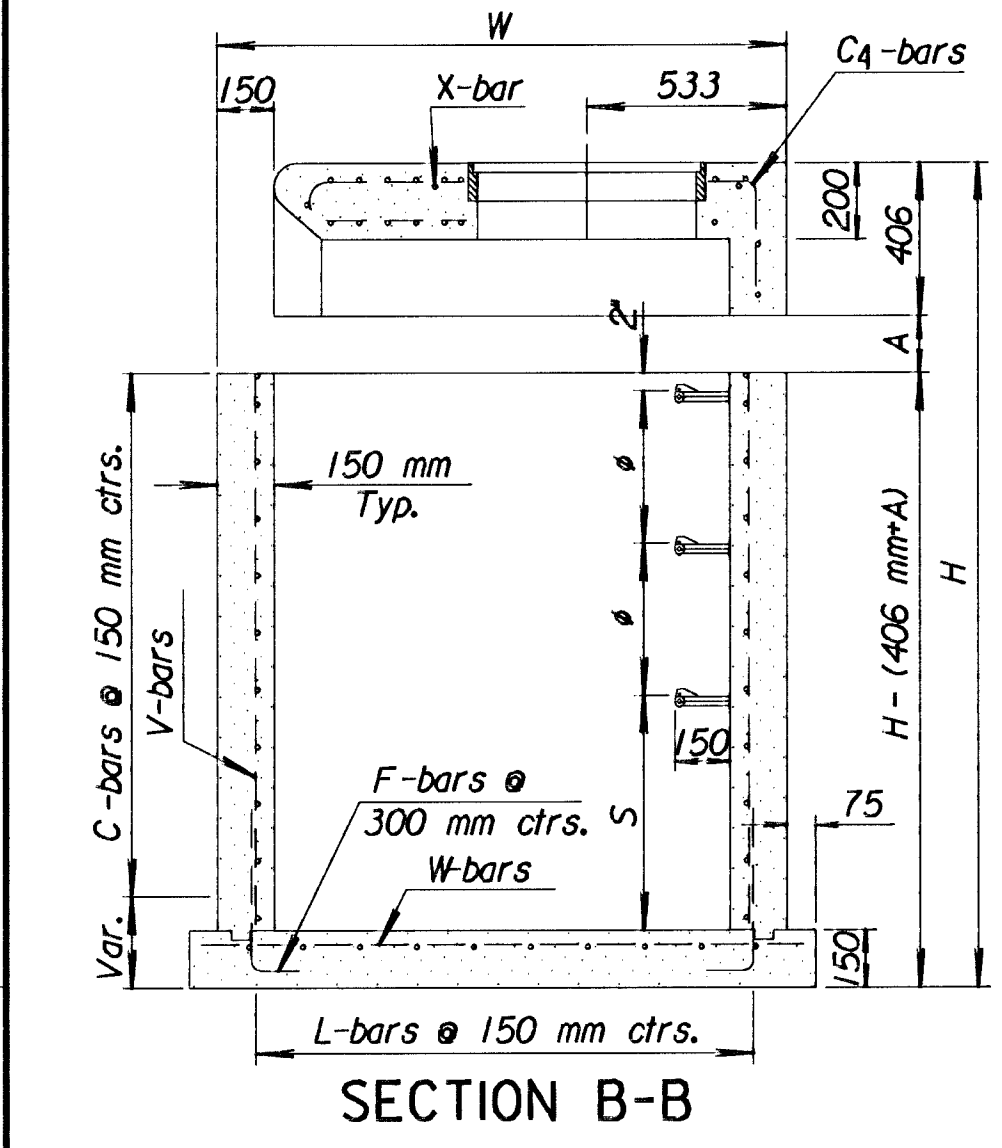
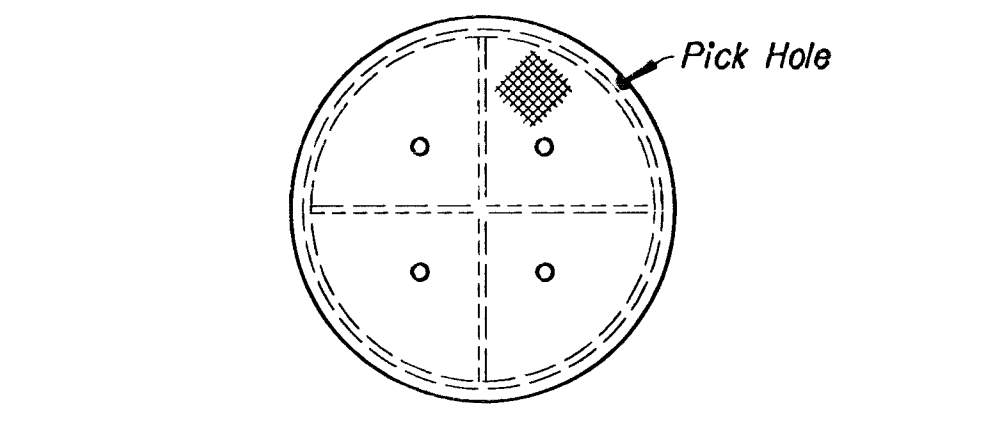
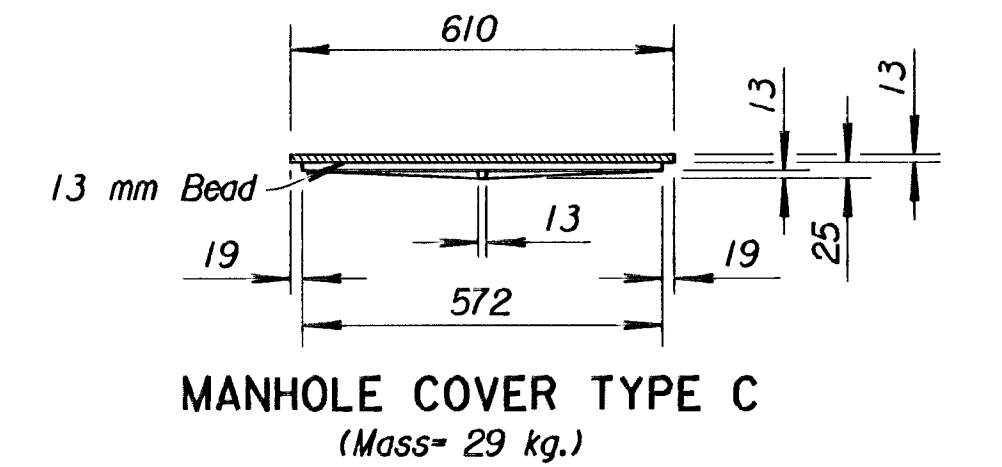
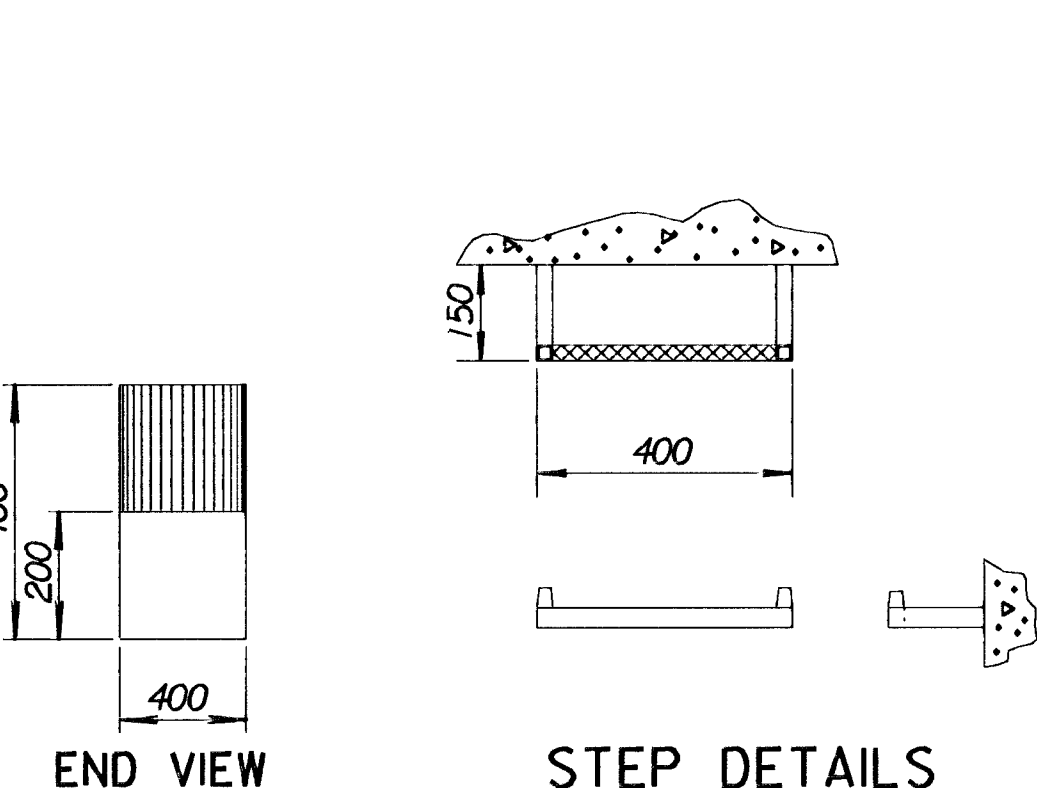
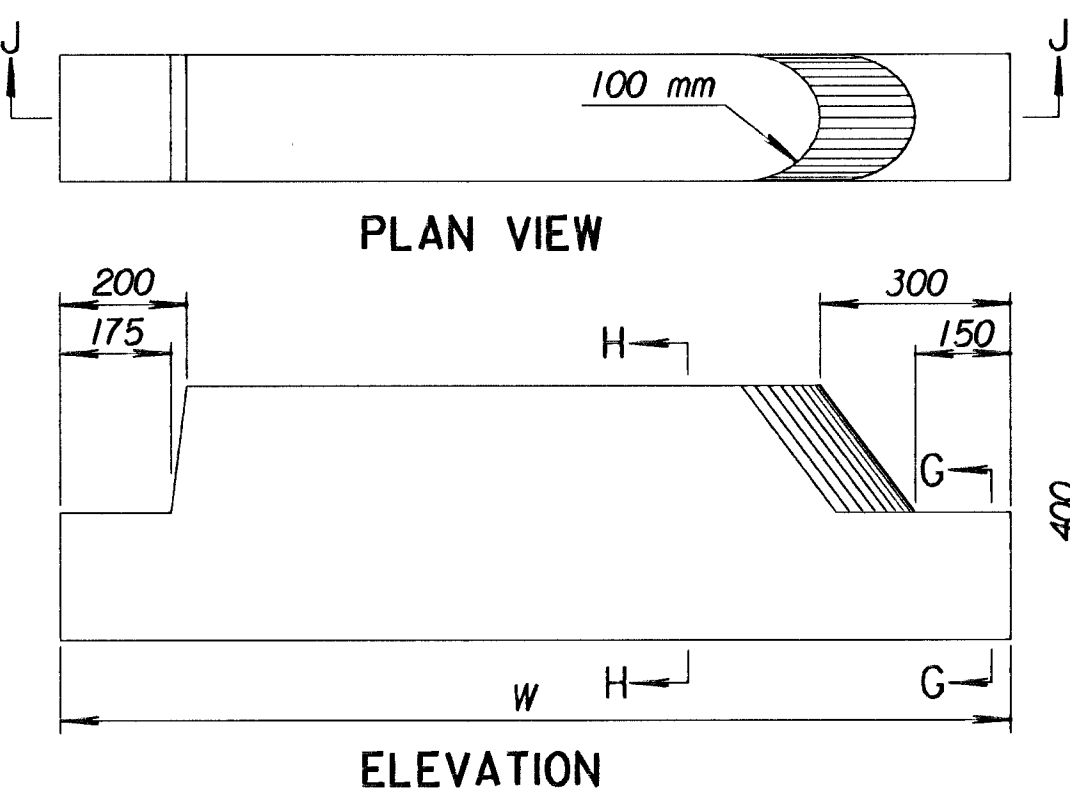
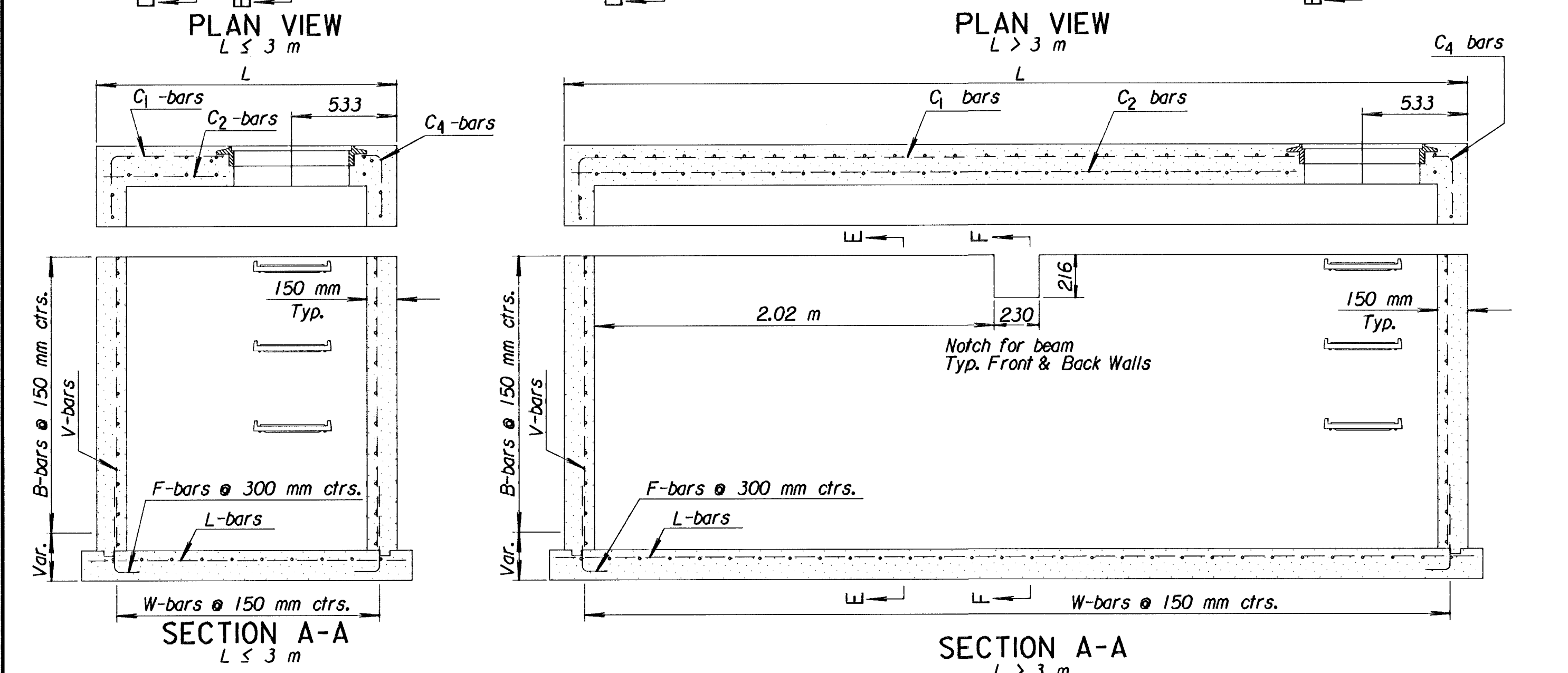
No reduction in pay length of curb, gutter, or curb & gutter will be made through the inlet area. Curb and gutter sections shall be shaped as shown where required by the installation of curb inlets. This work shall be subsidiary to other bid items.

For additional notes and details on Light Type Cast Iron Manhole Cover and Ring Type C and Cast Iron Steps, see Standard Drawing RD730 SI "Reinforced Concrete Manhole".

All reinforcing steel shall be #13 at 150 mm centers except where noted. Minimum clear distance to reinforcement shall be 38 mm.

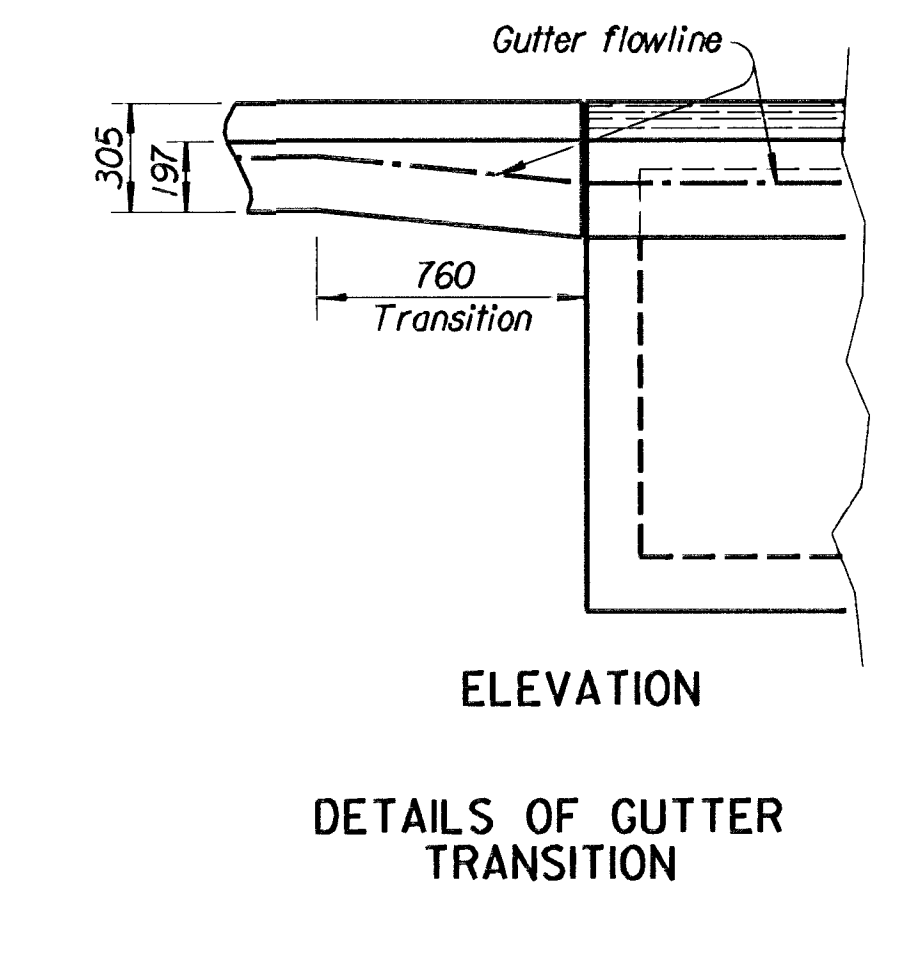
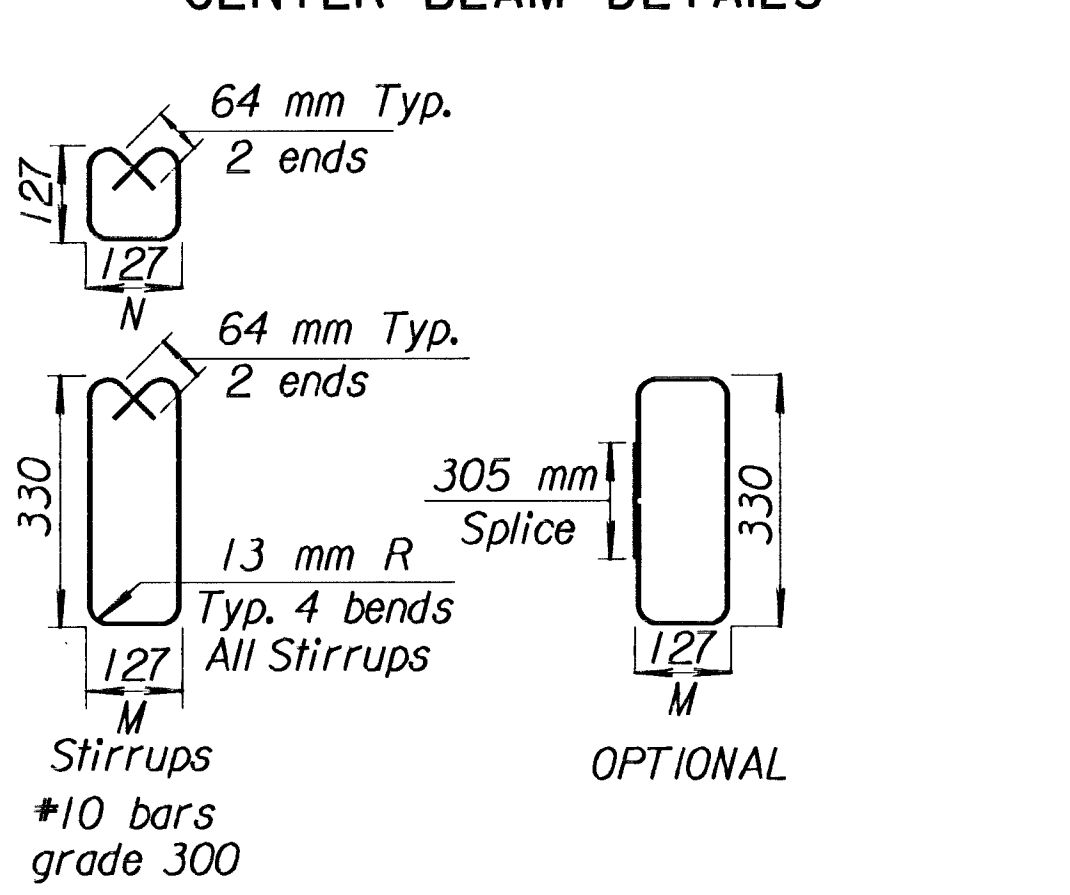
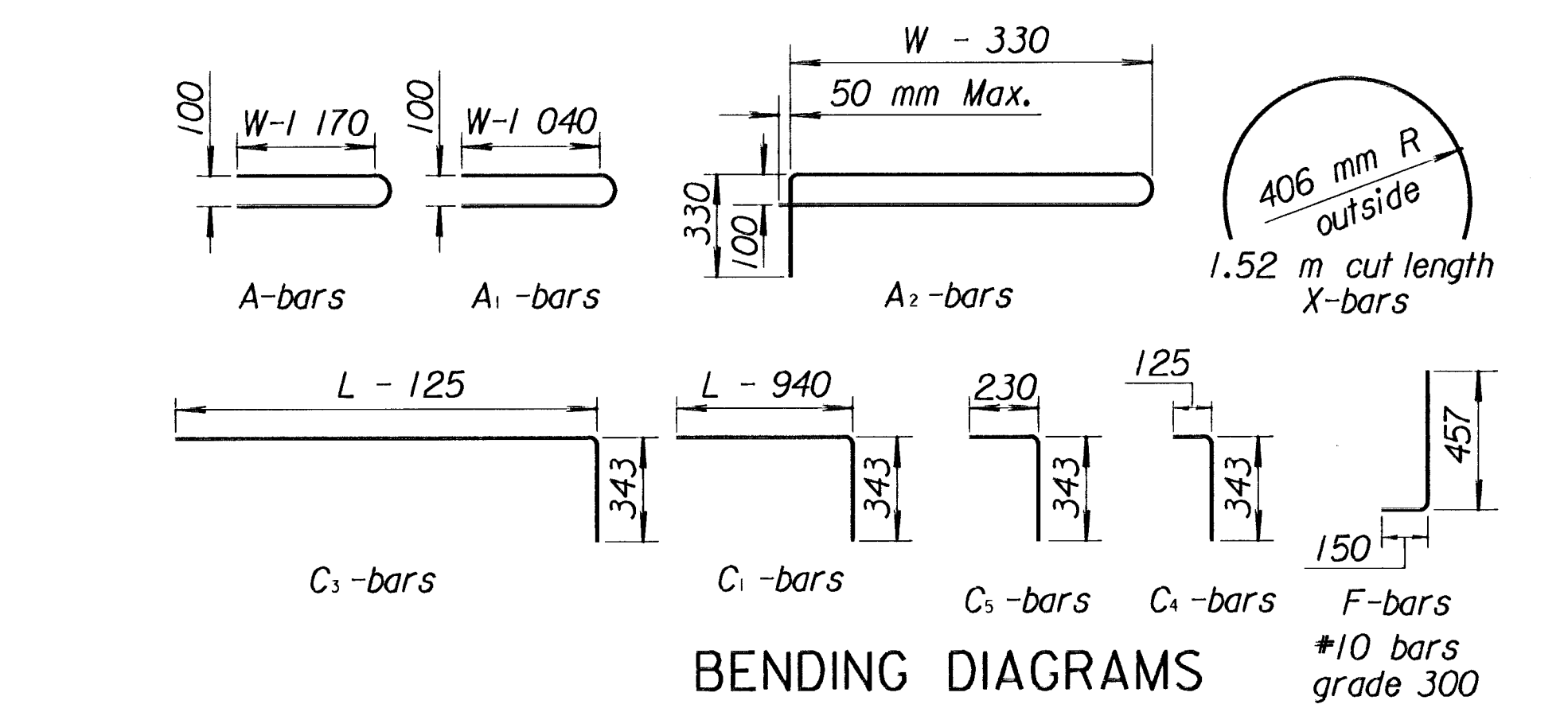
Floor of inlet shall be shaped as shown in various "Examples" on Reinforced Concrete Manhole Standard Drawing RD730 SI. Concrete used for shaping shall be unreinforced Class "A" Concrete or concrete pavement mix.

The Contractor shall determine pipe locations in the field prior to ordering Type 22 Precast Inlets to insure proper positioning of pipe openings.



\* LIGHT TYPE  
MANHOLE COVER & RING  
\* Rings with four equally spaced lugs will be permitted.

Notes:  
 \* Steps shall be uniformly spaced. Spacing shall be 300 mm minimum and 420 mm maximum.  
 \*A\* Adjustment space, 150 mm maximum. (Contractor's option, 25 mm to 150 mm) Allows top to be adjusted to finished curb height, or slope top as may be required.  
 \*S\* maximum = 686 mm + 1/2 x ID of outlet pipe.



3					
2					
1	12-15-97	Revised step spacing		R.J.S.	J.O.B.
NO.	DATE	REVISIONS		BY	APP'D

KANSAS DEPARTMENT OF TRANSPORTATION

**TYPE 22  
PRECAST INLETS**

RD752 SI

FHWA APPROVAL	2-2-98	APP'D. James O. Brewer
DESIGNED	QUANTITIES	TRACED Remboldt
DESIGN CK.	DETAIL CK.	TRACE CK. Seltz

Drawn By: J. Olson  
File: 1827\RD752