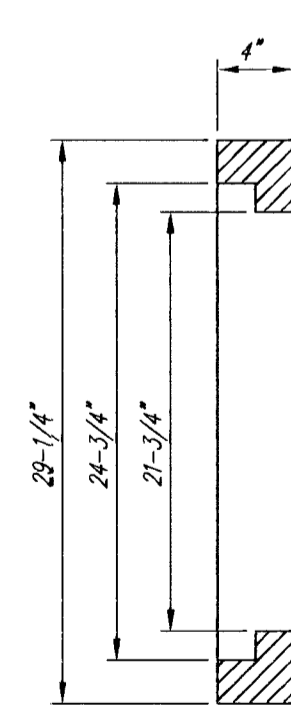
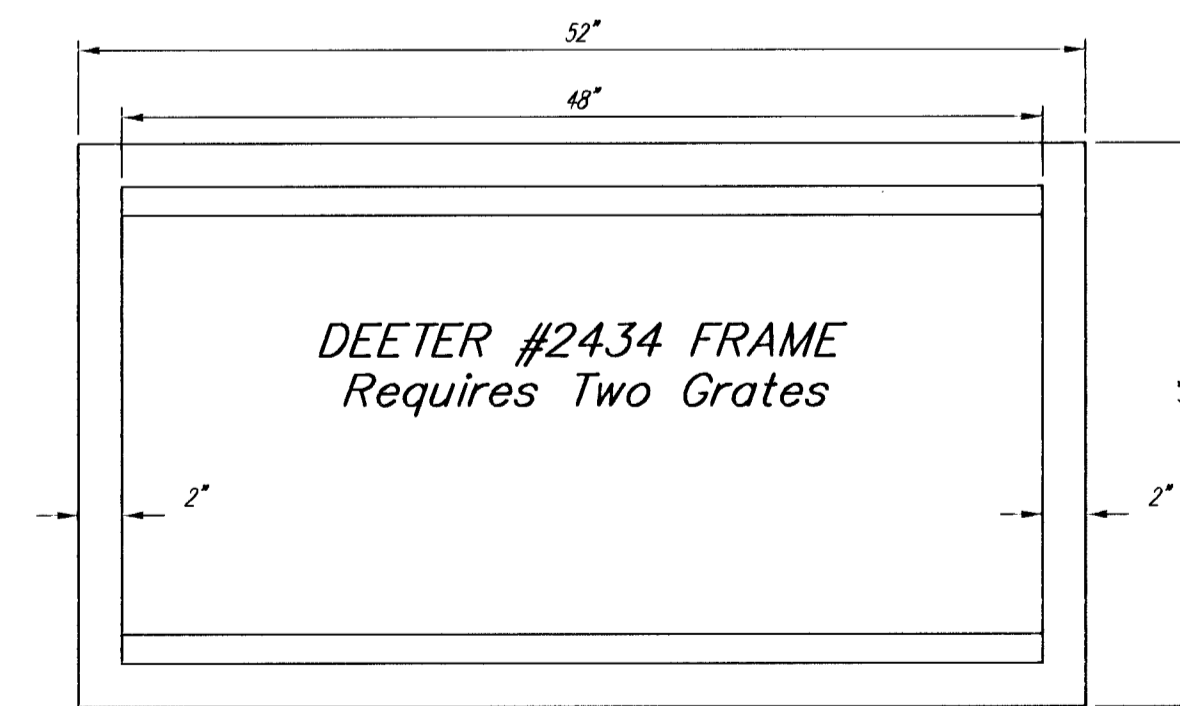


DEETER #2433 GRATE

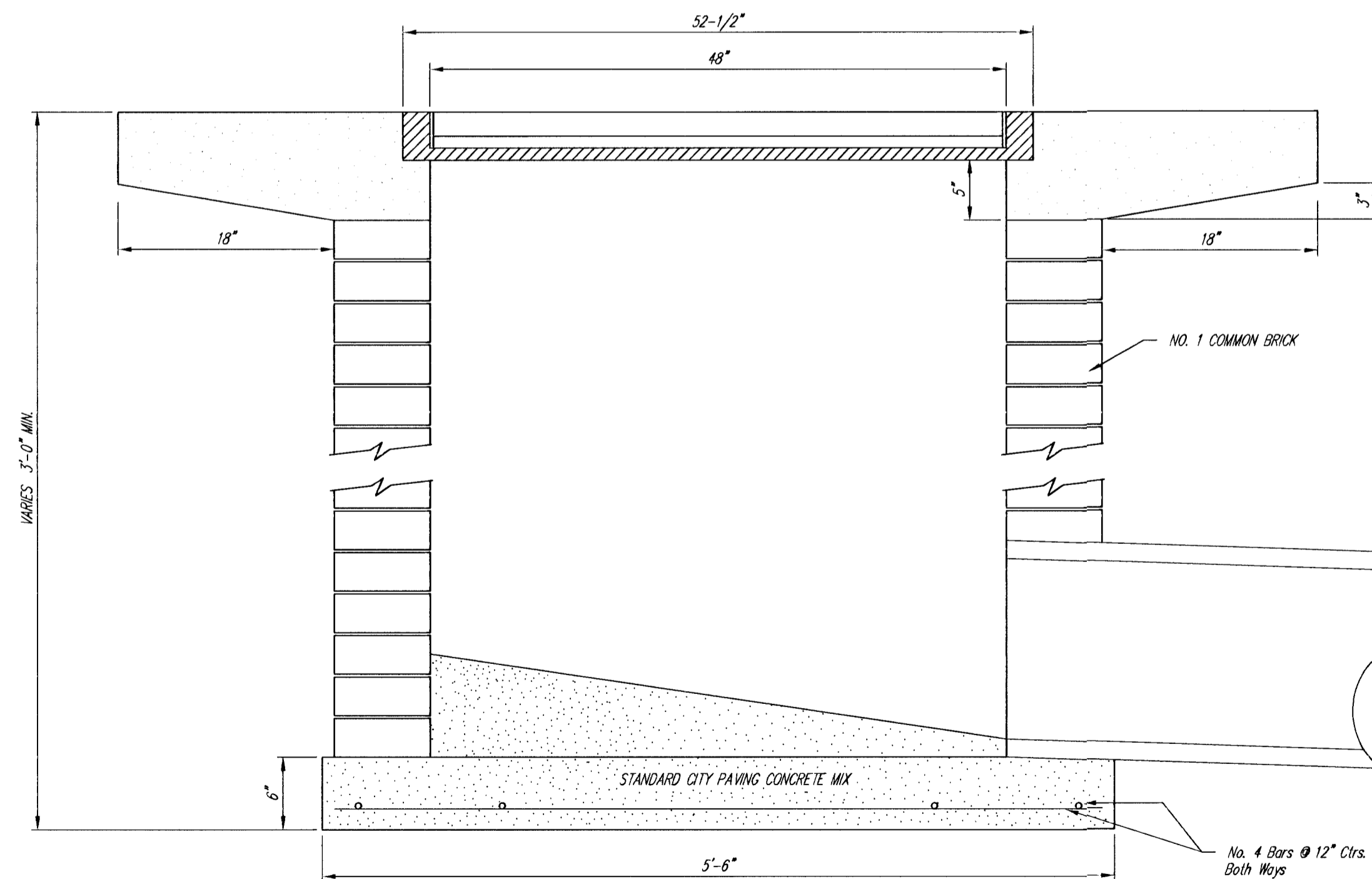
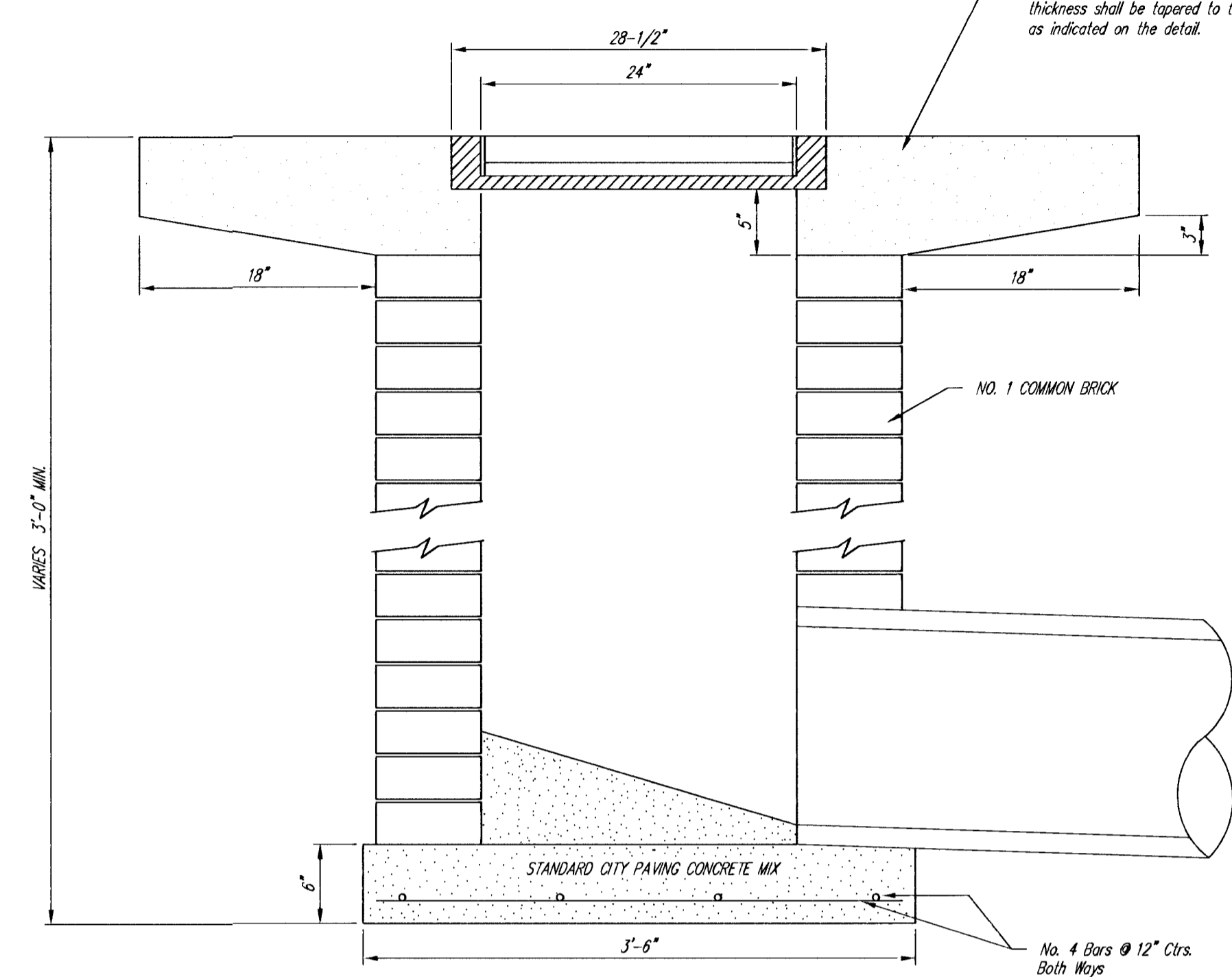
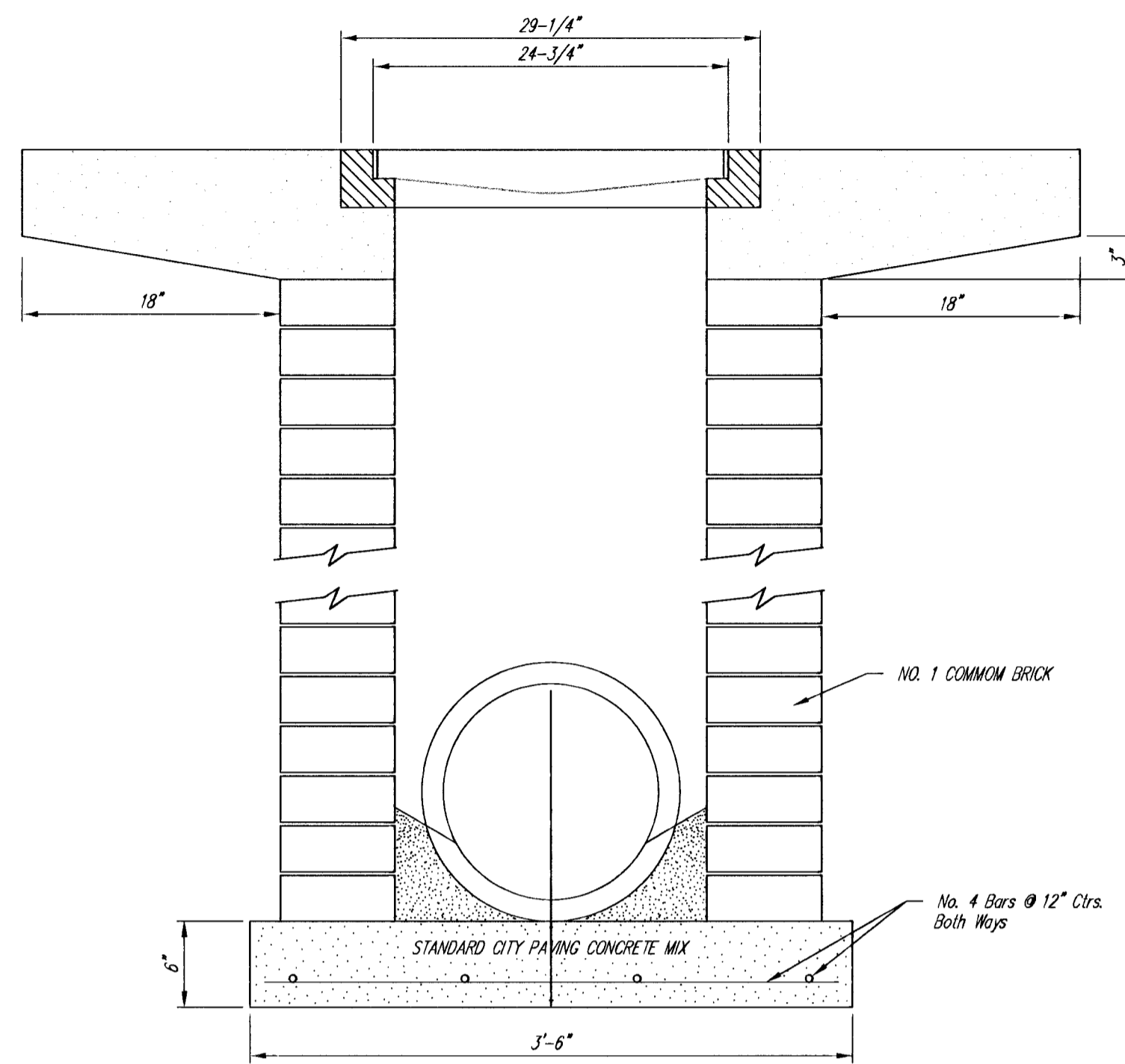
24" x 24" Frame and Grate Detail

NOTE: Grates shall be imprinted on the top surface with "CITY OF WICHITA" using letters at least 1" in height. Other marking methods may be approved by the engineer.



DEETER #2434 FRAME
Requires Two Grates

Double 24" x 24" Frame Detail



THE CITY OF WICHITA

CITY ENGINEER'S OFFICE
CITY HALL - SEVENTH FLOOR
428 NORTH MAIN STREET
WICHITA, KANSAS 67202
(316) 268-4501
(316) 268-4114 FAX

DROP INLET 2' X 2 1/2' X 4'	
M. E. LINDEBAK P.E. - CITY ENGINEER	
PROJECT NUMBER 87 N-0092-01	INDEX CODE XXXXXX
DATE MAR 96	SHEET 22A OF 75

\\Julie\DKC\182\gropjnit.dwg Fri Jan 21 10:28:44 2000 JULIE