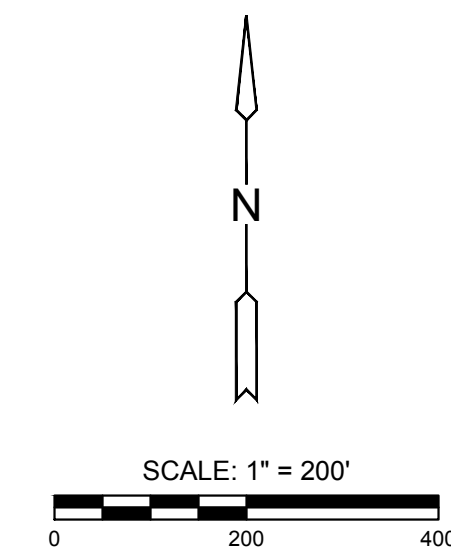
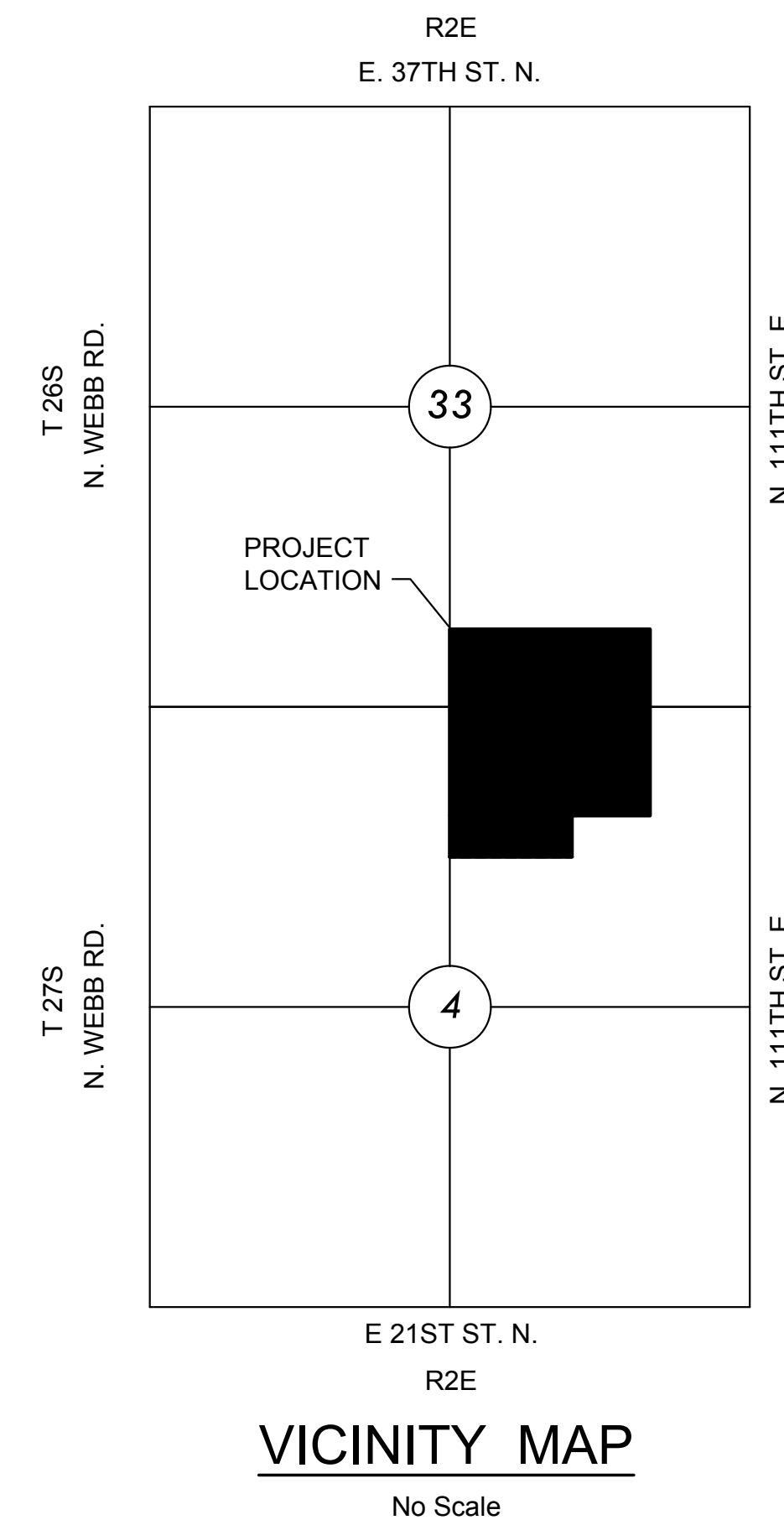
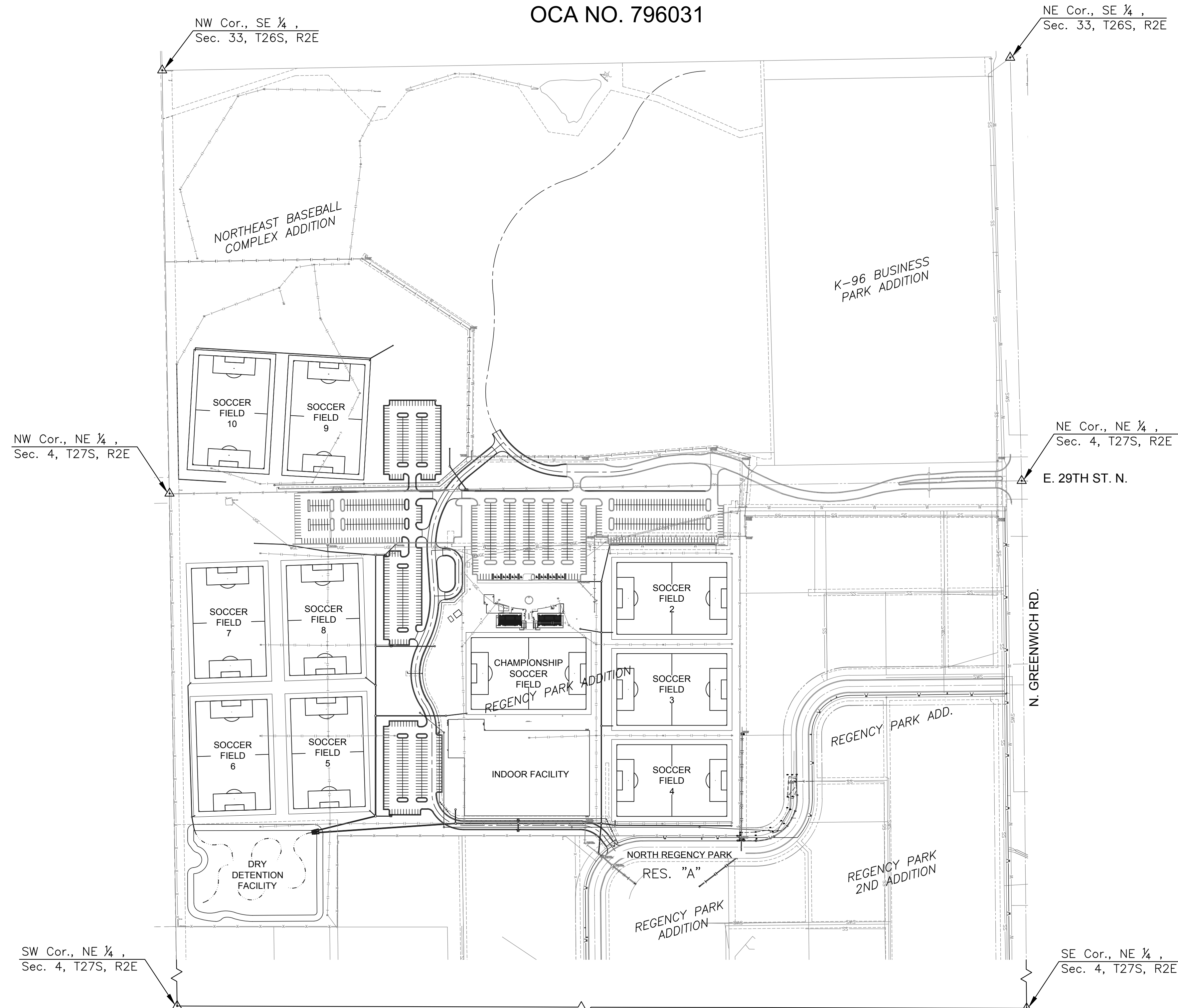


SITE PLANS FOR
STRYKER SPORTS
PHASE 5 - SPORTS FIELD LIGHTING

PROJECT NO. 472-85380
 AN ADDITION TO THE CITY OF WICHITA, SEDGWICK COUNTY, KANSAS
 GARY JANZEN, P.E. - CITY ENGINEER

OCA NO. 796031

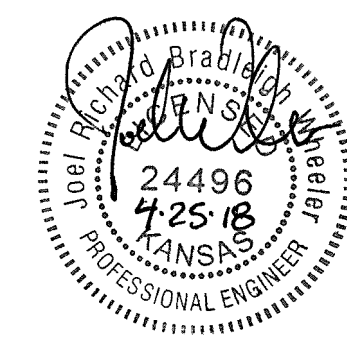


SHEET LIST

SHEET NO.	DESCRIPTION
CV-1	COVERSHEET
01	ELECTRICAL COVERSHEET
02	ELECTRICAL SITE PLAN - AREA A
03	ELECTRICAL SITE PLAN - AREA B
04	ELECTRICAL SITE PLAN - AREA C
05	ELECTRICAL SITE PLAN - AREA D
06	ELECTRICAL DETAILS
07	ELECTRICAL SCHEDULES



PHASE 5 - SPORTS FIELD LIGHTING
STRYKER SPORTS
 WICHITA, KANSAS



©2018 MKEC Engineering All Rights Reserved www.mkec.com
 These drawings and their contents, including, but not limited to, all concepts, designs, & ideas are the exclusive property of MKEC Engineering (MKEC), and may not be used or reproduced in any way without the express consent of MKEC.

COVERSHEET

PROJECT NO.	1701010567	
DATE	04-25-18	
SCALE	AS NOTED	
DESIGNED	DRAWN	CHECKED
CNG	ECW	JRBW

NO.	REVISION	DATE
0	ISSUE FOR CONSTRUCTION	04-25-18

SHEET NO.

CV-1

J:\PROJECTS\2017\1701010567_COW_STRYKER_170567 CAD\SH1510 BLOG MEPS\SPORTS LIGHTING PACKAGE\CV-1 - COVERSHEET.DWG