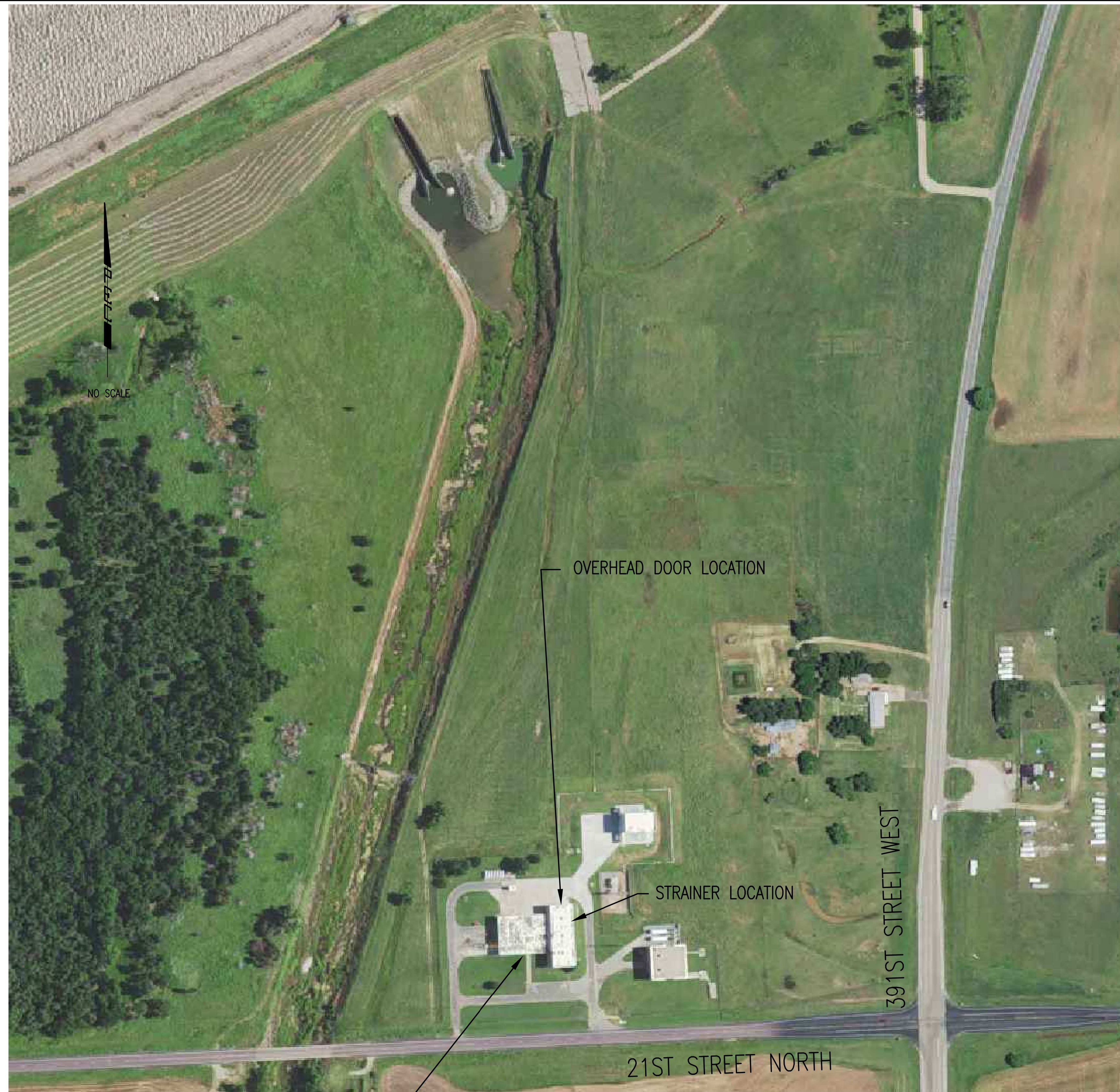


GENERAL NOTES

1. THE CONTRACTOR SHALL CONTAIN HIS OPERATIONS TO PERMIT TRAFFIC THROUGH AND ACROSS CONSTRUCTION AT EXISTING ROADWAYS AT ALL TIMES. THE CONTRACTOR SHALL ERECT WARNING SIGNS, FLASHING LIGHTS AND BARRICADES IN COMPLIANCE WITH THE MANUAL ON UNIFORM TRAFFIC CONTROL DEVICES TO ENSURE SAFETY.
2. AT LEAST 72 HOURS PRIOR TO BEGINNING WORK, THE CONTRACTOR SHALL CONTACT THE FOLLOWING PERSONNEL TO ADVISE THEM OF THE INTENDED WORK AND OF HIS SCHEDULE:
 MIKE JACOBS ERIC MEYER
 316-269-4760 316-540-3574
 MJacobs@wichita.gov EMeyer@wichita.gov
3. EACH BIDDER SHALL VISIT THE PROJECT SITE PRIOR TO SUBMITTING THE PROPOSAL FOR THIS WORK SO THAT HE WILL BE FULLY INFORMED OF THE EXISTING FIELD CONDITIONS AND THE OBSTACLES WHICH MIGHT BE ENCOUNTERED. UPON AWARD OF THE CONTRACT THE CONTRACTOR WILL NOT BE GRANTED ANY ADDITIONAL COMPENSATION WITH REGARDS TO TIME AND MONEY FOR EXISTING CONDITIONS THAT MAY HAVE BEEN EVALUATED DURING ANY INSPECTION OF THE SITE.
4. ALL CONSTRUCTION AND MATERIALS SHALL COMPLY WITH THE CITY OF WICHITA SPECIFICATIONS AND STANDARDS UNLESS OTHERWISE NOTED.
5. THE CONTRACTOR SHALL OBTAIN ALL LOCAL, COUNTY, STATE AND FEDERAL PERMITS AS REQUIRED.
6. RUBBLE FROM THE REMOVAL OF MISCELLANEOUS STRUCTURES INCLUDING ANY TREES SHALL BE REMOVED BY THE CONTRACTOR. THESE SITES SHALL BE APPROVED BY THE ENGINEER AS TO SUITABILITY, APPEARANCE, AND SITE LOCATION. ALL DISPOSAL SITES MUST BE APPROVED BY THE KANSAS DEPARTMENT OF HEALTH AND ENVIRONMENT. MATERIAL EITHER STOCKPILED OR DISPOSED OF IN A FLOOD PLAIN WILL REQUIRE A KANSAS STATE BOARD OF AGRICULTURE PERMIT. ANY MATERIAL DUMPED IN WATERS OF THE UNITED STATES OR WETLANDS IS SUBJECT TO U.S. CORPS OF ENGINEERS PERMITTING REGULATIONS. ANY MATERIAL BURIED OR STOCKPILED BEYOND APPROVED CONSTRUCTION LIMITS MAY REQUIRE ARCHAEOLOGICAL INVESTIGATIONS UNLESS BURIED IN A PREVIOUSLY APPROVED DISPOSAL LOCATION.
7. THE CONTRACTOR SHALL VERIFY HORIZONTAL AND VERTICAL LOCATION, TYPE, SIZE AND CLASS OF EXISTING WATERLINES PRIOR TO MAKING CONNECTIONS. EXISTING WATERLINE LOCATIONS AS SHOWN ON THE PLANS ARE APPROXIMATE. CONTRACTOR SHALL MAKE ADJUSTMENTS AS REQUIRED AND APPROVED BY THE ENGINEER. PROVISION AND INSTALLATION OF PIPE ADAPTORS, SHORT SECTIONS OF PIPE, AND COUPLERS SHALL BE SUBSIDIARY TO OTHER PAY ITEMS OF WORK.
8. THE CONTRACTOR SHALL CONTAIN HIS OPERATIONS AS TO NOT INTERRUPT PLANT OPERATIONS OR THE ACCESS OF PLANT DELIVERY VEHICLES.
9. THE CONTRACTOR SHALL COORDINATE ALL PLANT TIE-INS, SHUT DOWNS, PROCESS REMOVAL, AND PROCESS START UP WITH PUMP STATION PERSONNEL. THESE WORK ACTIVITIES SHALL BE COMPLETED ONLY WITHIN THE WINDOW OF TIME ALLOCATED FOR THE PROCEDURE BY THE PUMP STATION PERSONNEL.
10. ALL ELEVATIONS SHOWN ARE BASED ON NAVD 88 DATUM.
11. THE CONTRACTOR SHALL NOT START WORK ON THE PROJECT UNTIL THE PROJECT INSPECTOR IS ASSIGNED AND IS PRESENT ON THE SITE. ANY WORK DONE WITHOUT INSPECTION WILL BE REQUIRED TO BE UNCOVERED FOR INSPECTION AT THE CONTRACTORS EXPENSE.
12. THE CONTRACTOR SHALL CLEAN THE SITE UPON COMPLETION OF THE WORK. ANY NEW ITEMS REQUIRING PAINTING SHALL BE SUFFICIENTLY CLEANED AND PREPARED PRIOR TO PAINTING.
13. THE CONTRACTOR SHALL BE RESPONSIBLE FOR THE HANDLING AND DISPOSAL OF ALL REMOVED EQUIPMENT AND MATERIALS.

CONSTRUCTION SEQUENCE

1. NO WORK SHALL BEGIN UNTIL STRAINERS AND ASSOCIATED EQUIPMENT AND PIPING HAS ARRIVED ON SITE. CONTRACTOR SHALL BE RESPONSIBLE FOR STORING STRAINERS AND PIPING PRIOR TO INSTALLATION IN ACCORDANCE WITH MANUFACTURERS RECOMMENDATIONS. STRAINERS WILL NOT BE STORED INSIDE THE PUMP STATION PRIOR TO COMMISSIONING.
2. CONTRACTOR TO FIELD VERIFY ITEMS NOTED ON THE DRAWINGS PRIOR TO PREPARING SUBMITTALS. ANY DISCREPANCIES BETWEEN THE DRAWINGS OR SPECIFICATIONS AND THE FIELD MEASUREMENTS SHOULD BE NOTED TO THE ENGINEER PRIOR TO PREPARING SUBMITTALS.
3. MODIFICATIONS SHALL BE MADE TO THE EXISTING OVERHEAD CRANE STOP. REPLACE WITH A NEW STOP THAT ALLOWS THE CRANE MORE REACH. THIS WORK SHALL BE PERFORMED PRIOR TO STRAINER AND PIPING REMOVAL AND REPLACEMENT.
4. THE STRAINERS SHALL BE TESTED AND PUT INTO OPERATION ONE AT A TIME TO MINIMIZE IMPACT TO THE PUMP STATION OPERATIONS. PIPING TO AND FROM THE STRAINERS SHALL BE ISOLATED PRIOR TO STARTING WORK USING EXISTING BUTTERFLY VALVES. ONLY ITEMS ASSOCIATED WITH THE SPECIFIC STRAINER BEING INSTALLED AT THAT TIME SHALL BE DEMOLISHED.
5. BUTTERFLY VALVES ON ST-2 AND ST-3 INLET PIPING SHALL BE REPLACED IN A MANNER THAT MINIMIZES IMPACT TO THE PUMP STATION OPERATIONS. CONTRACTOR TO COORDINATE THE TIME OF THESE VALVE REPLACEMENTS WITH PUMP STATION PERSONNEL. WORK SHALL BE PERFORMED WHEN WATER PRODUCTION IS MINIMAL.
6. CONTRACTOR SHALL SUBMIT A DETAILED CONSTRUCTION SEQUENCE TO THE ENGINEER FOR APPROVAL PRIOR TO STARTING ANY WORK AT THE PUMP STATION SITE.



Served 02-07-2018 5:54:14 PM by GJM
 Plot Scale 1:1 02-08-2018 8:32:10 AM by GJM
 U:\Wichita-Civil\2016\160316\006\W...DWG\Drawings\160316-006 C1 Key Map and General Notes

PUMP STATION/ADMINISTRATION BUILDING

No.	Revision	By	Date
CITY OF WICHITA, KANSAS			
KEY MAP AND GENERAL NOTES			
CHENEY PUMP STATION STRAINER REPLACEMENT			
		PROFESSIONAL ENGINEERING CONSULTANTS, P.A. 303 SOUTH TOPEKA WICHITA, KS 67202 316-262-2691 www.pec1.com	
Designed by	SCU, NDF	Job No.	160316-006-0042
Drawn by	GM	Date	FEBRUARY 2018
			Sht. C1 of 8