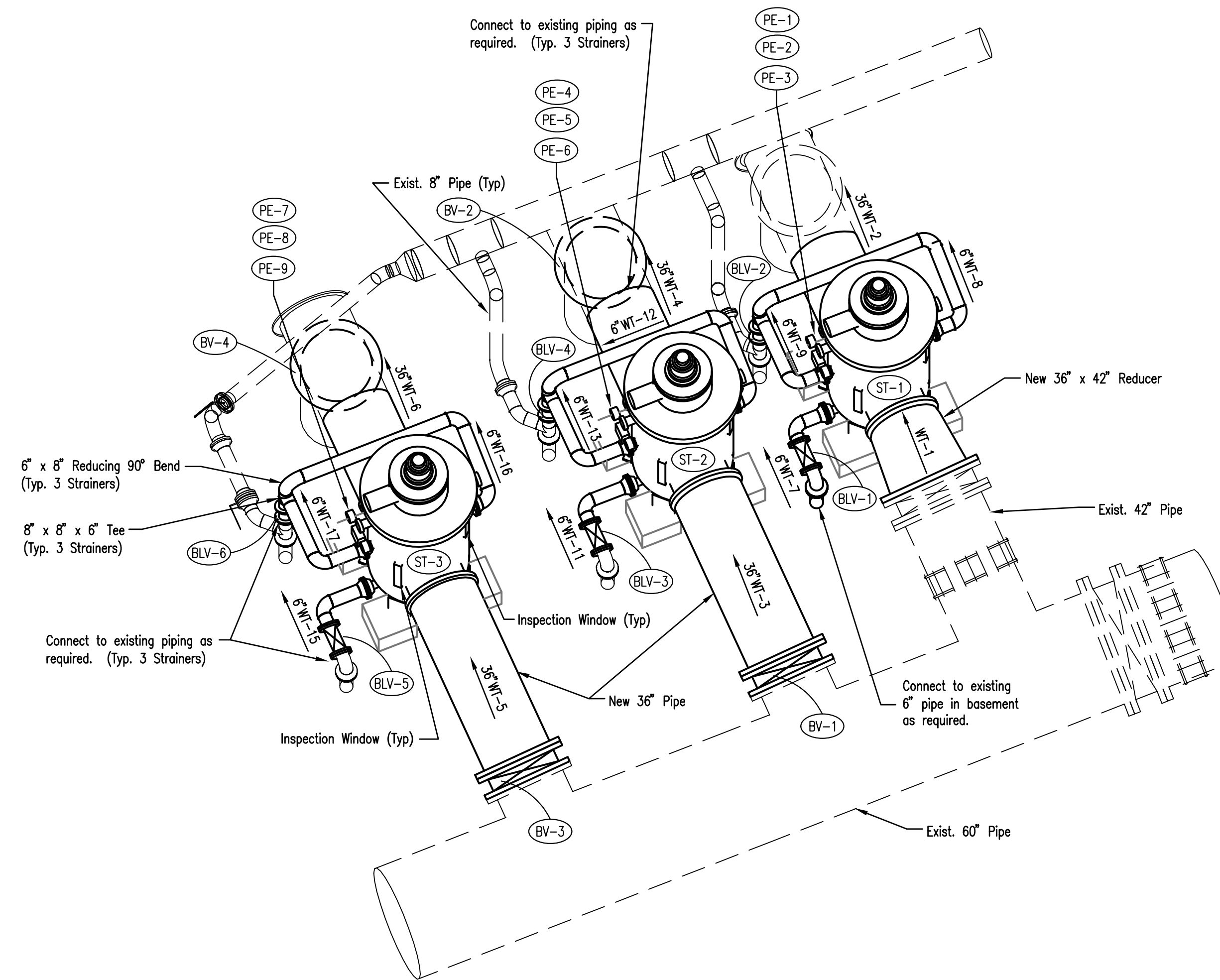
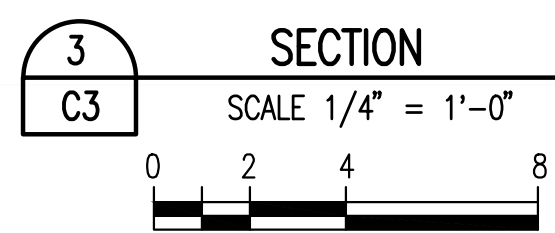
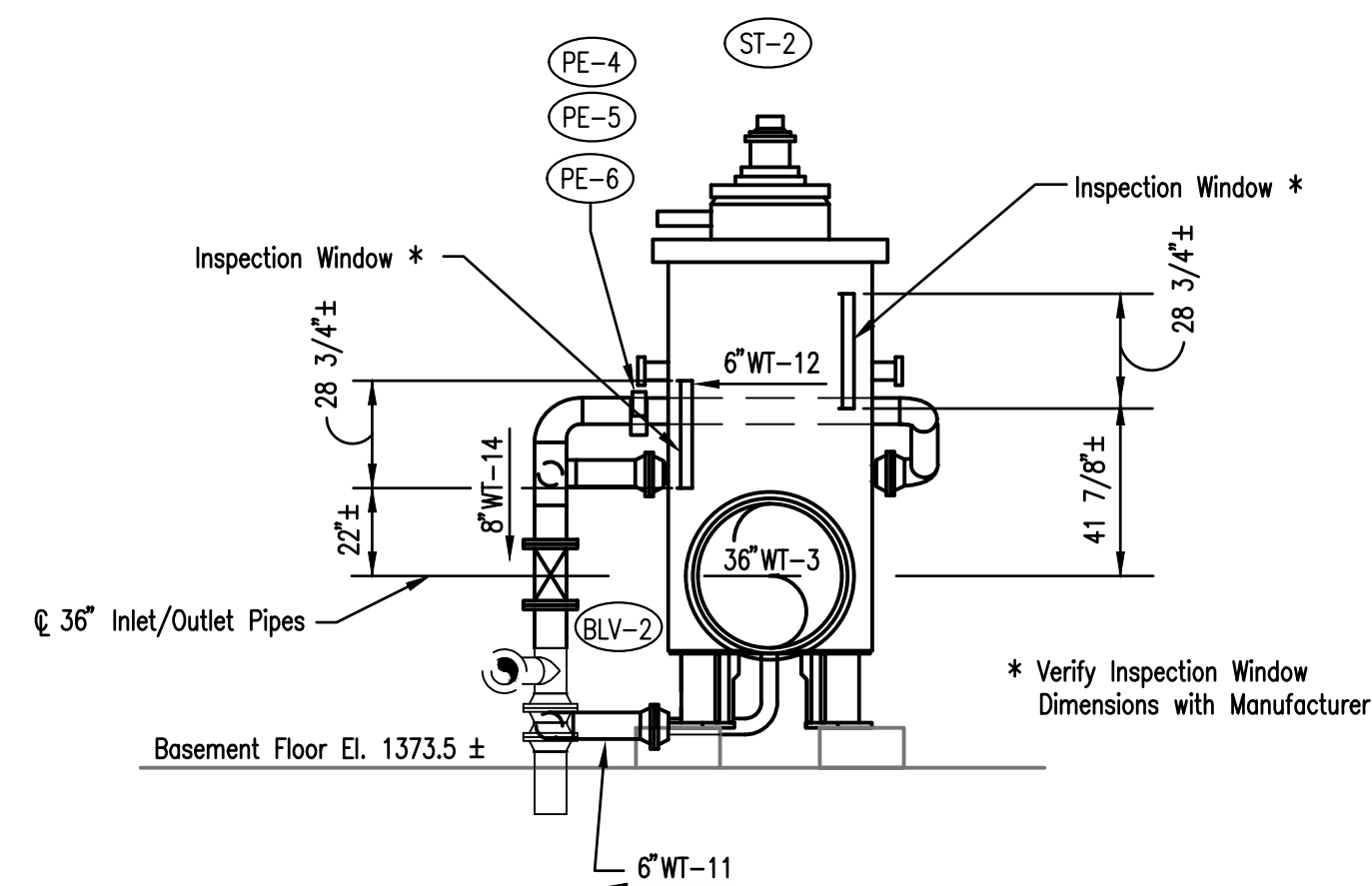
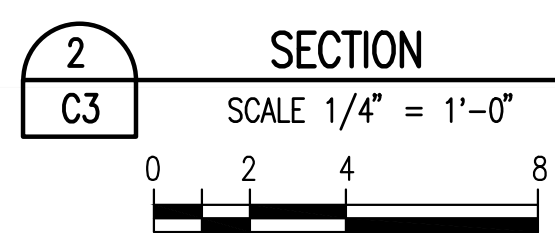
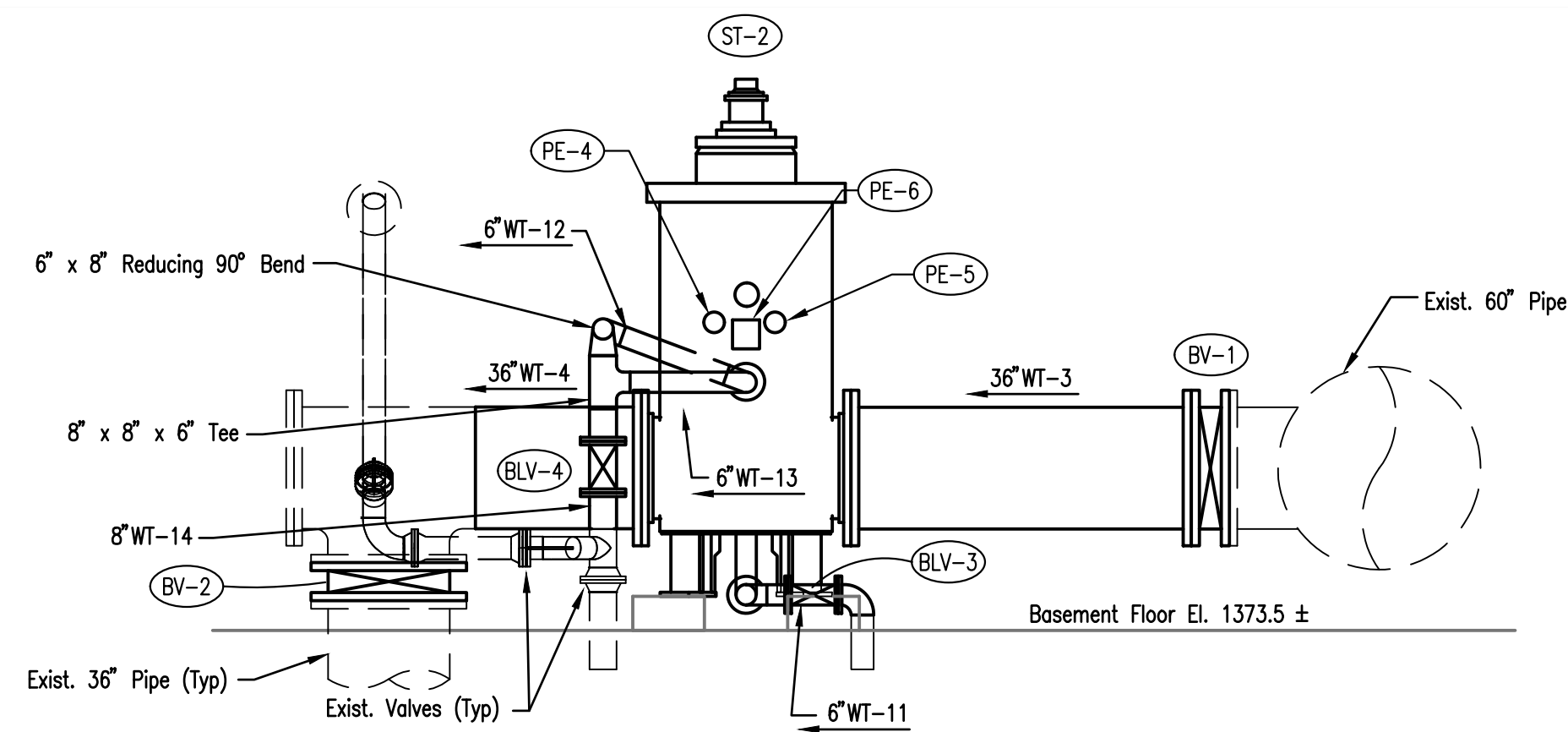
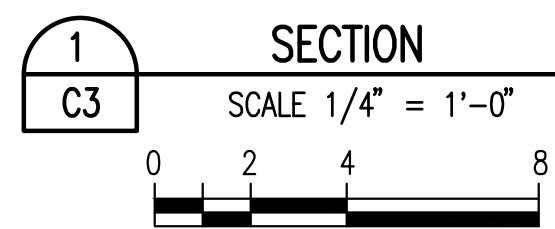


Existing Concrete Pad for Strainers. Field verify Size and Elevation of Pads so New Strainer Centerline matches Centerline of Existing Pipes. Maintain 4" clearance between edge of concrete pad and bearing plate. Patch exposed existing holes as required with non-shrink grout. (Typ. 3 Strainers)



STRAINER IMPROVEMENT PLAN

NOT TO SCALE

CRANE STOP MODIFICATION NOTE (TYP. 2 LOCATIONS):

1. Remove existing crane stop and replace with a W6x20. Install 1/2" from wall face. Weld to runway cap channel with 1/4" fillet weld all-around. Height of W6x20 to match existing stop plus 2".
2. Verify that the end truck wheel stops more than 1" from end of runway rail.



CRANE MODIFICATION DETAIL

NOT TO SCALE

| | | | | | |
|----------|---|---|---------------|---------|--------------|
| | No. | | Revision | By | Date |
| | CITY OF WICHITA, KANSAS | | | | |
| | STRAINER REPLACEMENT PLAN AND SECTIONS AND CRANE MODIFICATION DETAIL | | | | |
| | CHENEY PUMP STATION STRAINER REPLACEMENT | | | | |
| | | PROFESSIONAL ENGINEERING CONSULTANTS, P.A. 303 SOUTH TOPEKA WICHITA, KS 67202 316-262-2891 www.pec1.com | | | Sht. C3 of 8 |
| | | Designed by | SCU, NDF | Job No. | |
| Drawn by | GM | Date | FEBRUARY 2018 | | |