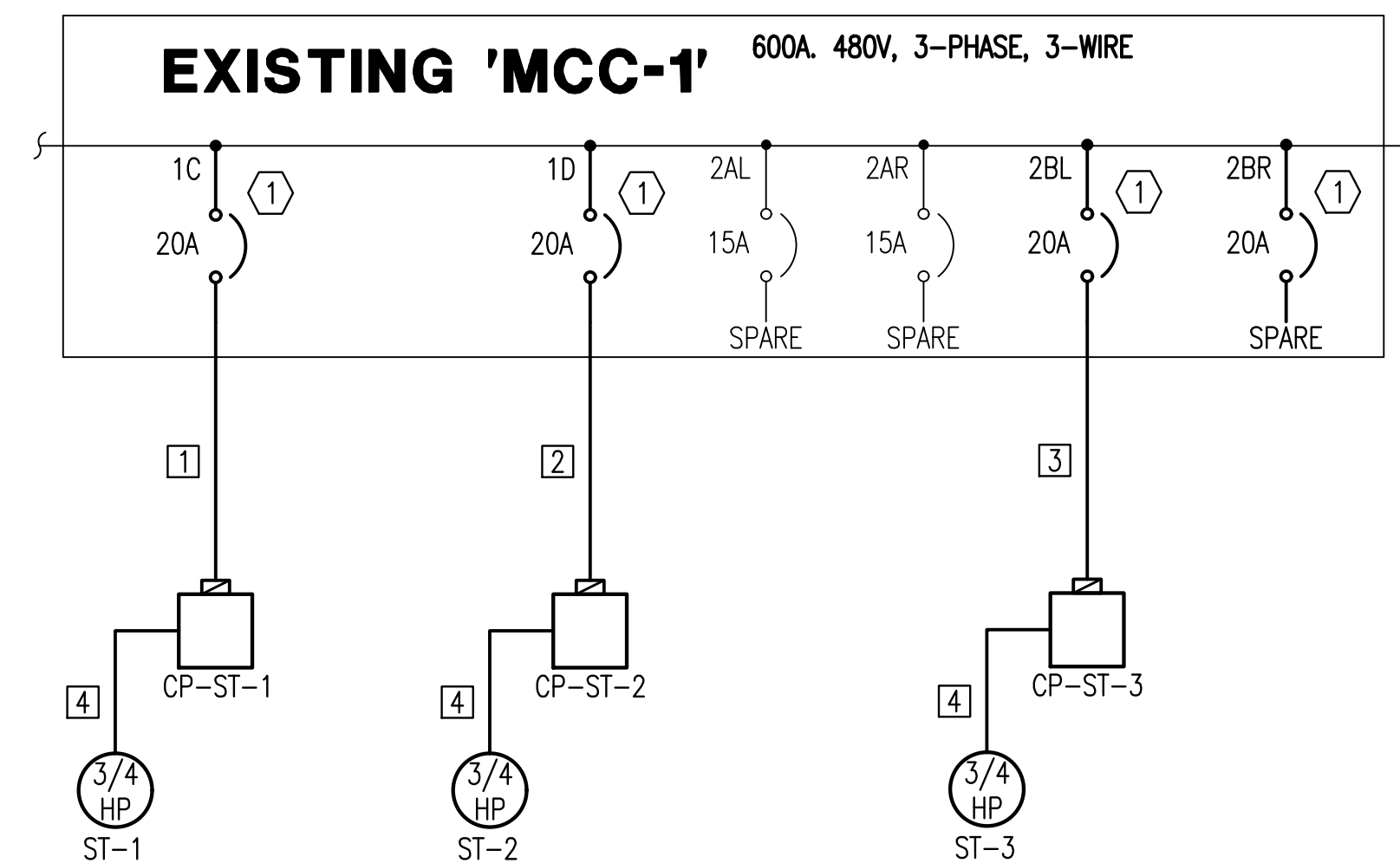


GENERAL ONE-LINE DIAGRAM NOTES:

1. UNLESS OTHERWISE NOTED, ALL CIRCUIT BREAKERS AND/OR SWITCHES ARE THREE POLE.
2. ALL ELECTRICAL EQUIPMENT AND WIRING SHOWN IN A LIGHT LINE, IS EXISTING TO REMAIN.
3. ALL ELECTRICAL EQUIPMENT AND WIRING SHOWN IN A DARK LINE, IS NEW WORK UNDER THIS CONTRACT.
4. ALL ELECTRICAL EQUIPMENT AND WIRING SHOWN IN A DARK DASHED LINE, IS TO BE REMOVED UNDER THIS CONTRACT.

1 ELECTRICAL PARTIAL ONE-LINE DIAGRAM - DEMOLITION
NOT TO SCALE

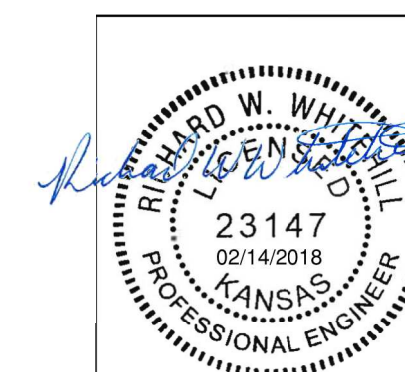


KEYED NOTES:

- ① PROVIDE NEW BUCKETS TO MATCH EXISTING GE 6000 LINE CONTROL CENTER.

DESIG.		EQUIPMENT SERVED		CONDUCTORS		GROUND SIZE PER SET	
				SETS	NO.	SIZE	
1	CP-ST-1	1	4	#12 AWG CU	#12	3/4"	
2	CP-ST-2	1	4	#12 AWG CU	#12	3/4"	
3	CP-ST-3	1	4	#12 AWG CU	#12	3/4"	
4	ST-1, ST-2 & ST-3	1	4	#12 AWG CU	#12	3/4"	

2 ELECTRICAL PARTIAL ONE-LINE DIAGRAM - PROPOSED
NOT TO SCALE



No.	Revision	By	Date
CITY OF WICHITA, KANSAS			
ELECTRICAL ONE-LINE DIAGRAM			
CHENEY PUMP STATION STRAINER REPLACEMENT			
PEC		PROFESSIONAL ENGINEERING CONSULTANTS, P.A. 303 SOUTH TOPEKA WICHITA, KS 67202 316-262-2691 www.pec1.com	
Designed by	ABP	Job No. 160316-006-0042	Sht. E2 of 8
Drawn by	RWW	Date FEBRUARY 2018	