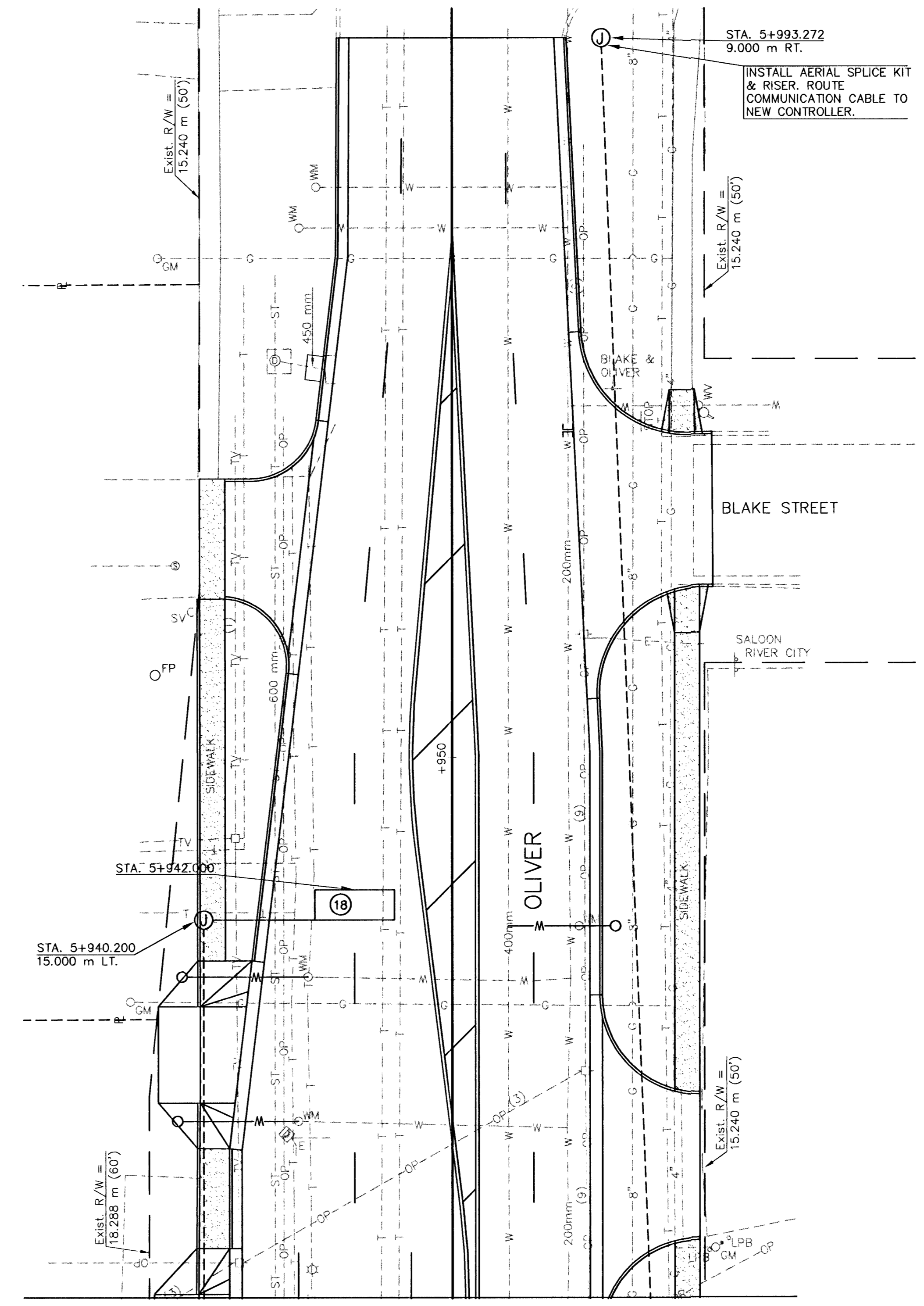
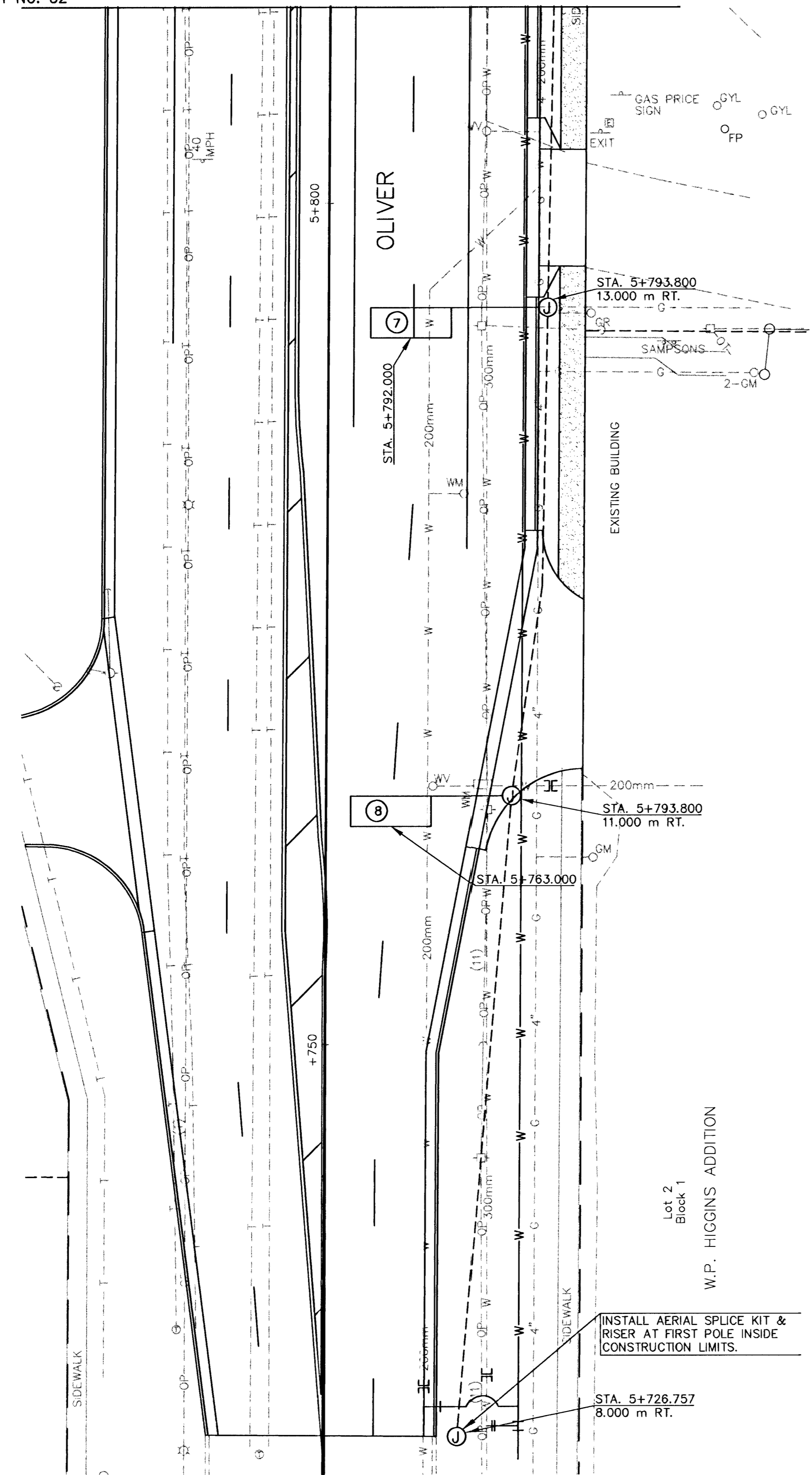
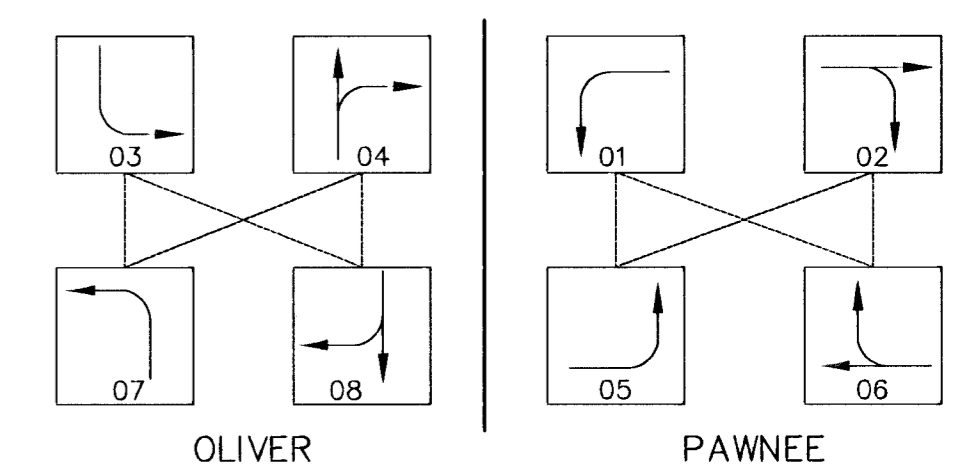
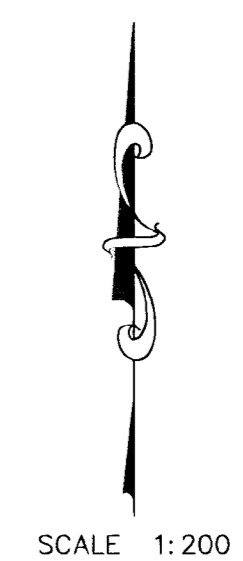


FHWA REGION NO.	STATE	PROJECT NO.	YEAR	SHEET NO.	TOTAL SHEETS
7	KANSAS	87 N-0092-01	1999	33	75

MATCH LINE 1
SEE SHEET NO. 32



MATCH LINE 2
SEE SHEET NO. 32



SIGNAL PHASING

- GENERAL NOTES:
- CONTRACTOR SHALL REMOVE AND DELIVER SIGNALS, SIGNAL POLES, CONTROLLER, AND MANHOLE COVERS TO CENTRAL MAINTENANCE FACILITY AT 1801 S. McLEAN. CONTRACTOR SHALL NOTIFY TRAFFIC ENGINEERING DEPARTMENT TWO WEEKS PRIOR TO START OF CONSTRUCTION.
 - TEMPORARY SIGNALS WILL BE PROVIDED BY CONTRACTOR. SEE SHEET NO. 51.
 - CONDUITS TO BE BORED OR JACKED UNDER EXISTING PAVEMENT INCLUDING SIDEWALKS, DRIVEWAYS, ETC. UNLESS OTHERWISE NOTED.

TRAFFIC SIGNAL PLAN	
	PROJ. NO. 97-1827
	DATE JULY 1999
KAW VALLEY ENGINEERING ENGINEERS AND LAND SURVEYORS 2319 NORTH JACKSON P.O. BOX 1304 JUNCTION CITY, KANSAS 66441 (785)762-3040 FAX (785)762-7744 E-MAIL jckve@jc.net	DESIGNER SM
	DRAWN BY JO
	CHECKED BY CFN
	1827TRFC SHEET 33 OF 75