

J:\PROJECTS\2017\10\1047_BOULEVER ASSOCIATES_WATERFRONT_TRANSITIONAL CARE FACILITY_17447_CAD\SH51505 CIVIL\SW617447_PPD TITLE.DWG
 PLOTTED: Tuesday, January 30, 2018 @ 08:44AM

GENERAL NOTES

- THE CONTRACTOR SHALL COMPLY WITH ALL APPLICABLE SAFETY REGULATIONS. ALL CONSTRUCTION SHALL BE COMPLETED FOLLOWING CURRENT CITY STANDARD SPECIFICATIONS AND SPECIAL PROVISIONS.
- CONTRACTOR WILL BE REQUIRED TO PROVIDE NOTICE TO UTILITY COMPANIES A MINIMUM OF SEVENTY-TWO (72) HOURS PRIOR TO ANY EXCAVATION, AS FOLLOWS:
 KANSAS ONE-CALL 687-2470
 THE CONTRACTOR MUST NOTIFY THE FOLLOWING IN CASE OF AN EMERGENCY:
 AT&T 1-800-246-8464
 BLACK HILLS ENERGY (GAS) 1-800-694-8989
 CITY OF WICHITA WATER & SEWER 1-316-219-8921
 CITY OF WICHITA STORMWATER 1-316-268-4090
 CITY OF WICHITA TRAFFIC 1-316-268-4034
 COX COMMUNICATIONS 1-888-249-3530
 KANSAS GAS SERVICE 1-888-482-4950
 WESTAR ENERGY 1-800-544-4857
- UTILITY SERVICE LINES, POLES, ETC. ARE TO BE ADJUSTED AS NECESSARY BY OTHERS PRIOR TO CONSTRUCTION UNLESS THE PLANS SPECIFICALLY CALL FOR THEIR ADJUSTMENT BY THE CONTRACTOR OR UNLESS THE PLANS SPECIFICALLY IDENTIFY A UTILITY TO BE ADJUSTED BY ITS OWNER DURING CONSTRUCTION. EXISTING UTILITIES AND THEIR LOCATION, AS SHOWN ON THE PLANS, REPRESENT THE BEST INFORMATION OBTAINABLE FOR DESIGN. THE CONTRACTOR WILL BE REQUIRED TO WORK AROUND EXISTING UTILITIES WITHIN THE RIGHT-OF-WAY WHICH DO NOT CONFLICT WITH PROPOSED CONSTRUCTION.
- RUBBLE FROM THE REMOVAL OF MISCELLANEOUS STRUCTURES AND EXCESS EXCAVATION WHICH IS TO BE WASTED SHALL BE DISPOSED OF ON SITES TO BE PROVIDED BY THE CONTRACTOR. THESE SITES SHALL BE APPROVED BY THE ENGINEER AS TO SUITABILITY, APPEARANCE AND SITE LOCATION. LOCATIONS, IN THE OPINION OF THE ENGINEER, THAT WILL LEAVE AN UNSIGHTLY APPEARANCE WILL NOT BE APPROVED. ALL DISPOSAL SITES MUST BE APPROVED BY THE KANSAS DEPARTMENT OF HEALTH AND ENVIRONMENT. MATERIAL EITHER STOCKPILED OR DISPOSED OF IN A FLOOD PLAIN WILL REQUIRE A KANSAS STATE BOARD OF AGRICULTURE PERMIT. ANY MATERIAL DUMPED IN WATERS OF THE UNITED STATES OR WETLANDS IS SUBJECT TO U.S. CORPS OF ENGINEERS PERMITTING REGULATIONS. ANY MATERIAL BURIED OR STOCKPILED BEYOND APPROVED CONSTRUCTION LIMITS WILL REQUIRE ADDITIONAL ARCHAEOLOGICAL INVESTIGATIONS UNLESS BURIED IN A PREVIOUSLY APPROVED BORROW LOCATION.
- TREES AND SHRUBS IN PUBLIC RIGHT-OF-WAY WHICH ARE IN DIRECT CONFLICT WITH PROPOSED NEW CONSTRUCTION SHALL BE REMOVED BY THE CONTRACTOR WITH THE CITY ENGINEER'S APPROVAL. TREES AND SHRUBS WHICH ARE NOT IN DIRECT CONFLICT WITH PROPOSED NEW CONSTRUCTION SHALL BE SAVED AND PROTECTED FROM DAMAGE.
- THE CONTRACTOR SHALL GIVE ALL PROPERTY OWNERS AND/OR TENANTS OF DEVELOPED PROPERTY ABUTTING THE CONSTRUCTION OF THIS PROJECT A MINIMUM OF TEN (10) DAYS NOTICE PRIOR TO START OF CONSTRUCTION.
- THE CONTRACTOR SHALL BE RESPONSIBLE FOR PRESERVING PROPERTY IRONS. THE CONTRACTOR WILL BE REQUIRED TO RE-ESTABLISH ANY PROPERTY IRONS WHICH ARE DAMAGED OR DESTROYED BY HIS CONSTRUCTION OPERATIONS. SUCH IRONS SHALL BE RE-ESTABLISHED BY A LICENSED LAND SURVEYOR IN ACCORDANCE WITH STATE LAWS.
- THE ENGINEERING DIVISION SHALL FIELD LOCATE WATER VALVES ONE TIME DURING CONSTRUCTION WHEN REQUESTED BY THE CONTRACTOR. IT SHALL BE THE CONTRACTOR'S RESPONSIBILITY TO PRESERVE SUCH FIELD LOCATIONS DURING THE CONSTRUCTION PROCESS. WATER VALVES, VALVE BOXES OR FIRE HYDRANTS DAMAGED DURING CONSTRUCTION SHALL BE REPAIRED BY CONTRACTOR AT HIS OWN EXPENSE. VALVE BOXES AND WATER METERS WITHIN THE PROJECT LIMITS SHALL BE ADJUSTED TO MATCH FIELD GRADES BY THE CONTRACTOR.
- THE CONTRACTOR SHALL NOTIFY THE CONSULTANT ENGINEER AND TOM MASON AT 316-268-4574 WITH THE CITY OF WICHITA WITH THE ANTICIPATED CONSTRUCTION START DATE AND NOTIFY THEM OF PROJECT COMPLETION. STAKING AND INSPECTION FOR THIS PROJECT WILL BE THE RESPONSIBILITY OF THE CONTRACTOR.
- IF TRAFFIC WILL BE IMPACTED BY CONSTRUCTION, A TRAFFIC CONTROL PLAN MUST BE SUBMITTED AND APPROVED BY THE CITY TRAFFIC ENGINEER, BRIAN COON AT traffic@wichita.gov BEFORE CONSTRUCTION CAN BEGIN. THE CONTRACTOR SHALL BE RESPONSIBLE FOR ALL TRAFFIC CONTROL MEASURES TO FACILITATE CONSTRUCTION. ALL CONSTRUCTION ZONE MARKINGS AND SIGNAGE SHALL CONFORM TO THE LATEST VERSION OF THE MANUAL ON UNIFORM TRAFFIC CONTROL DEVICES (MUTCD) AS PUBLISHED BY THE US DEPT. OF TRANSPORTATION, FEDERAL HIGHWAY ADMINISTRATION. ALL COSTS ASSOCIATED WITH CONSTRUCTION MARKINGS AND SIGNAGE SHALL BE THE CONTRACTOR'S RESPONSIBILITY.
- ALL ELEVATIONS SHOWN ARE NAVD 88.
- ALL AREAS DISTURBED DURING CONSTRUCTION THAT WILL NOT BE UNDER PROPOSED PAVEMENT SHALL BE RESTORED TO MATCH EXISTING CONDITIONS.
- ANY SIDEWALK, DRIVE APPROACH, OR STREET PAVEMENT REMOVED TO CONSTRUCT PROJECT MUST HAVE A PAVEMENT CUT PERMIT AND BE REPLACED BY CITY CONTRACTOR. PERMITS CAN BE OBTAINED BY CALLING 316-268-4501 OR 316-268-4480.
- CITY MAINTENANCE OF STORM SEWER ENDS AT THE LAST STRUCTURE IN THE EASEMENT OR RIGHT-OF-WAY.
- FOLLOW THE LINK BELOW FOR CONSTRUCTION DETAILS ON SPECIFIC CITY OF WICHITA STANDARD DETAILS: <http://www.wichita.gov/PWU/Pages/Regulations.aspx>
- CONTRACTOR SHALL LIMIT THE EXTENT OF TRENCH OPEN OVERNIGHT AND WEEKENDS TO LESS THAN 50 FEET.
- EXISTING UTILITIES AND THEIR LOCATION, AS SHOWN ON THE PLANS REPRESENT THE BEST INFORMATION OBTAINABLE FOR DESIGN. LOCATION INFORMATION HAS BEEN OBTAINED FROM THE VARIOUS COMPANIES AND IS EITHER FROM COMPANY UTILITY DRAWINGS OR COMPANY PROVIDED FIELD LOCATIONS. THE PLAN LOCATIONS SHOWN ARE NOT GUARANTEED. ADDITIONAL EXISTING UTILITIES MAY ALSO BE ENCOUNTERED.
- A PORTION OF EXCESS EXCAVATED MATERIAL SHALL BE MOUNDED AROUND MANHOLES WHICH EXTEND MORE THAN ONE (1) FOOT ABOVE THE EXISTING GROUND. SUCH MOUND SHALL BE CONSTRUCTED WITH NEW DEVELOPMENT A SIX (6) FOOT DIAMETER FLAT TOP WITH 4 TO 1 SIDE SLOPES DOWN TO THE ORIGINAL GROUND. THE ELEVATION OF THE FLAT TOP OF THE MOUND SHALL BE 0.4 FOOT BELOW THE TOP OF THE MANHOLE.
- GEOTECHNICAL REPORT AVAILABLE UPON REQUEST.
- CONTRACTOR SHALL PROVIDE POSITIVE DRAINAGE AWAY FROM ALL MANHOLE COVERS.
- THE INSPECTING FIRM SHALL SUBMIT TO THE CITY STORMWATER MAINTENANCE DIVISION A DIGITAL COPY OF THE CCTV INSPECTION OF THE CONDUITS AND STRUCTURES FOLLOWING CONSTRUCTION. THE DIGITAL FILE FORMATION SHALL BE COMPATIBLE WITH THE CITY INPUT TEMPLATE. A COPY OF THE TEMPLATE IS AVAILABLE UPON REQUEST AT 316-268-4090.
- WORK DONE UNDER THIS PROJECT IS SUBJECT TO THE CITY OF WICHITA REQUIREMENTS FOR "CONSTRUCTION OF INFRASTRUCTURE IMPROVEMENTS BY PRIVATE CONTRACT". THE CONTRACTOR SHALL BE FAMILIAR AND COMPLY WITH ALL OF THE REQUIREMENTS, INCLUDING BONDING, INSPECTION, TESTING, NOTIFICATION, PROVIDING AS-BUILT DRAWINGS, PAYING FOR ALL NECESSARY CONNECTIONS, AND/OR STREET REPAIR FEES AND PROVIDING PIPE MATERIAL AND OTHER CERTIFICATIONS.
- DEVELOPER FOR THIS PROJECT IS:
 EAST WICHITA SNF, LLC
 1623 BLAKE ST., SUITE 300
 DENVER, CO, 80202
 ANDREW SHEARER
 (303) 893-0250

PRIVATE STORM WATER SEWER

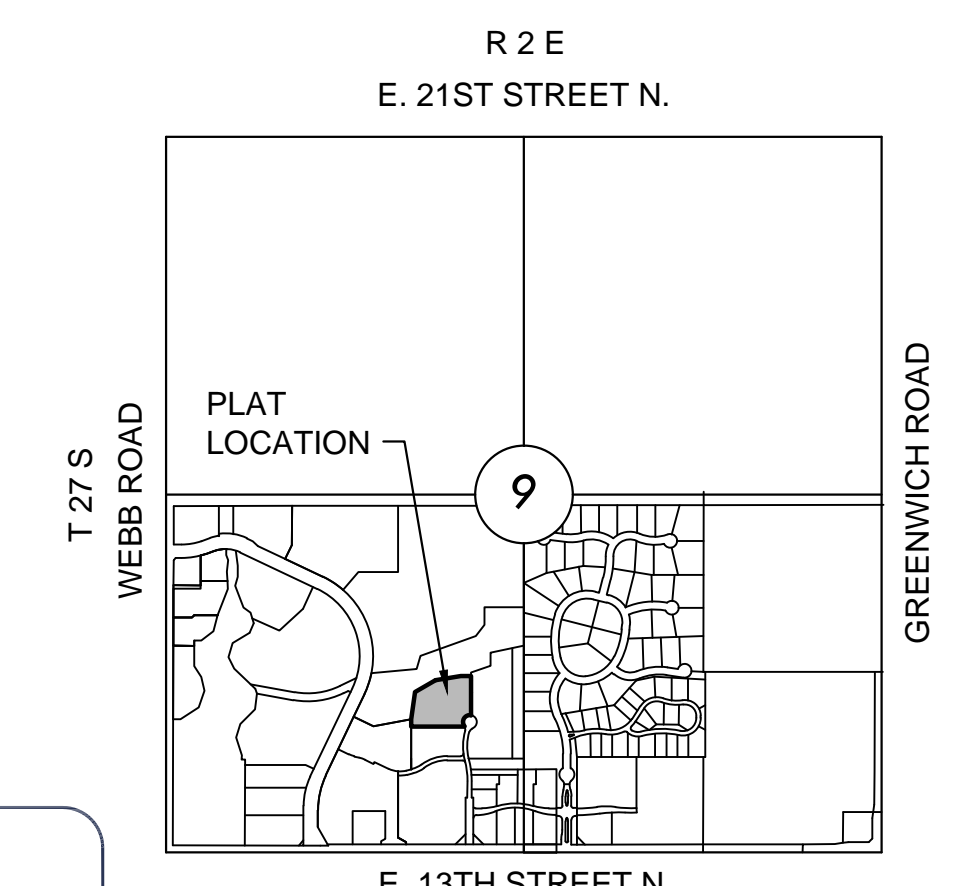
TO SERVE

SKILLED NURSING FACILITY

1550 N LINDBERG CIRCLE
 WICHITA, KS 67206

THE CITY OF WICHITA, KANSAS
 GARY JANZEN, P.E. - CITY ENGINEER

PROJECT NO.
 0497PPD (133119)



VICINITY MAP
 No Scale

AS BUILTS
 Contractor: McCullough Excavation
 Inspector: Matt Perez
 Date: 4-13-18

KEMILLER
 ENGINEERING PA
 117 E. Lewis,
 Wichita, KS 67202 (316)264-0242

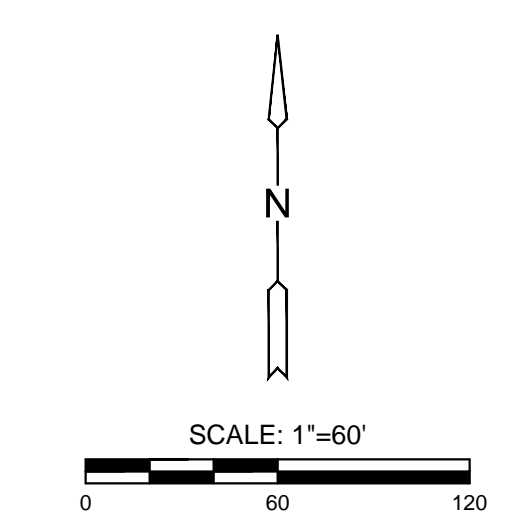
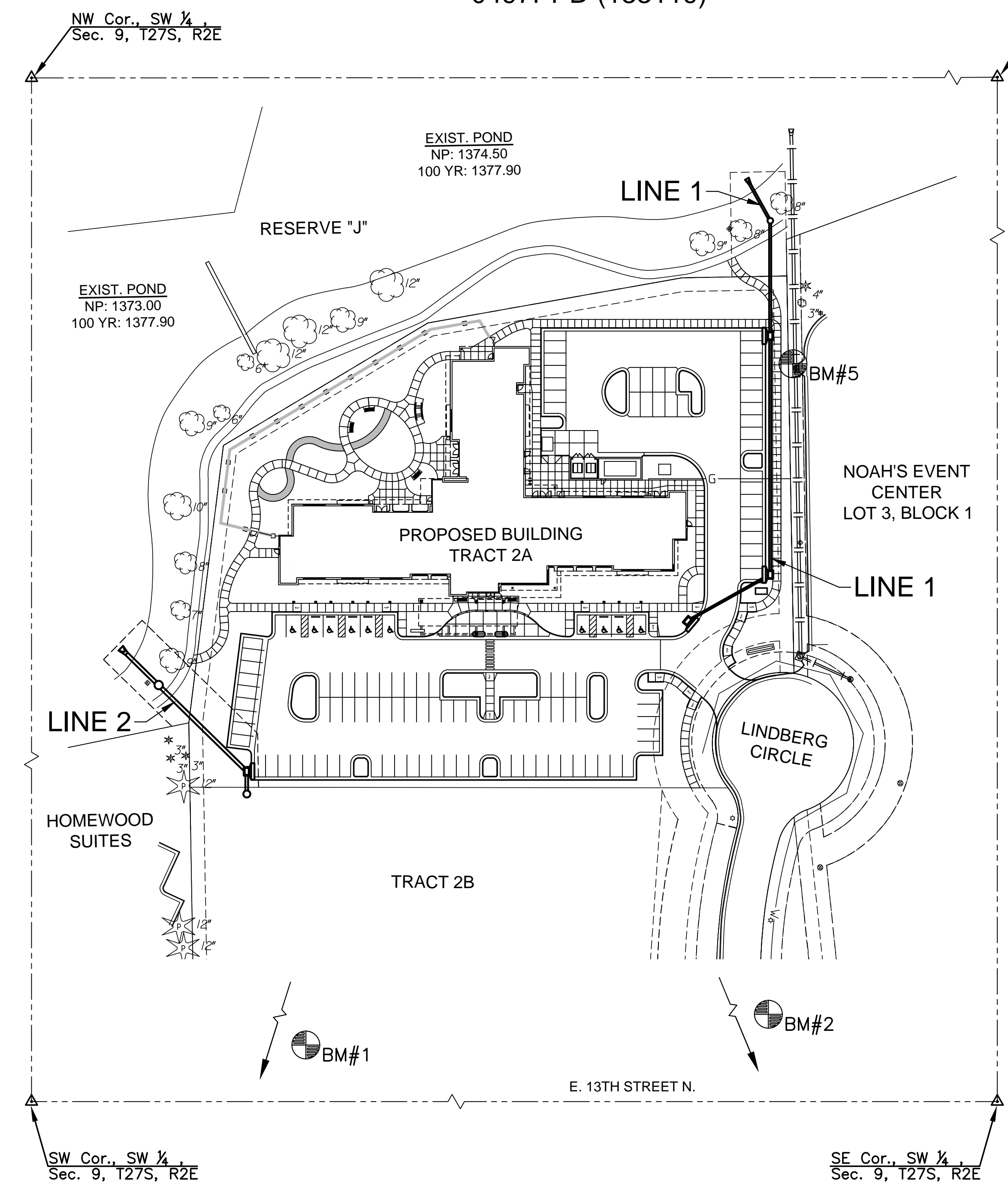
BENCHMARKS

- BM#1** CHISELED SQUARE ON TOP OF NORTH CURB OF 14TH STREET, 12' EAST OF SOUTHWEST CORNER SITE. ELEV.=1381.38 NGVD 29
- BM#2** CHISELED SQUARE ON TOP OF EAST CURB OF LINDBERG ON APPROXIMATE CENTER OF STREET, SOUTH SIDE OF HANDICAP RAMP. ELEV.=1384.60 NGVD 29
- BM#5** CHISELED SQUARE ON NORTHWEST CORNER OF CURB INLET 150' +/- SOUTHWEST OF NOAH'S EVENT CENTER. ELEV.=1380.45 NGVD 29

INDEX TO DRAWINGS

| SHEET NO. | DESCRIPTION |
|-----------|-------------|
| 01 | TITLE SHEET |
| 02 | SWS LINE 1 |
| 03 | SWS LINE 2 |
| 04-05 | DETAILS |
| 06 | PLAT |

SEE GENERAL NOTE #16 FOR CITY OF WICHITA STANDARD BMP LINK



LEGEND

- EXISTING SEWER
- === PROPOSED SEWER

LEGAL DESCRIPTION "TRACT 2A"

A TRACT OF LAND LYING IN A PORTION OF LOT 2, BLOCK 1, THE WATERFRONT SIXTH ADDITION, AN ADDITION TO WICHITA SEDGWICK COUNTY, KANSAS; SAID TRACT BEING MORE PARTICULARLY DESCRIBED AS FOLLOWS:

PROPOSED IMPERVIOUS=2.24 AC.
 PROPOSED PERVIOUS=1.11AC.
 WQ_v= "IN LIEU OF" FEE
 CP_v=0.42 AC-FT

Stormwater Certification:
 New Development

These construction plans were prepared in accordance with the current Stormwater Management Regulations as set forth in the City of Wichita's Stormwater Management Ordinance 16.32 and the policies/guidelines presented in the Wichita/Sedgwick County Stormwater Manual.

Disturbed Area=3.35 AC
 Water Quality Treatment: "IN-LIEU OF" FEE
 Downstream Channel Protection: 0.42 AC-FT
 Detention: SEE BELOW.
 DETENTION AND CHANNEL PROTECTION ARE ACCOUNTED FOR IN BEECH LAKE PONDS.

APPROVED AS NOTED
 BY WICHITA PUBLIC WORKS ENGINEERING
 AND STORMWATER DIVISION

Engineering: *Johanna Kellman 1-18-18*
 Storm Water: *Joe Heibel PE 1-19-18*

NOTE TO CONTRACTORS

Inspection and testing for this project is to be provided by a Licensed Consulting Engineering Firm under contract with the Owner/Developer. Said inspection to be in accordance with the City of Wichita standard construction engineering practices and certified by a Licensed Professional Engineer in the state of Kansas. No work shall be performed by the Contractor without such inspection, nor shall any work be commenced without written authorization by the City Engineer. All Construction and Materials shall comply with the current City of Wichita Specifications and Standards and Special Provisions. (on file and available at Wichita.gov).

An approved copy of these plans signed by City staff are required on-site.



PRIVATE STORM WATER SEWER PLAN FOR
SKILLED NURSING FACILITY
 WATERFRONT SIXTH ADDITION - TRACT 2A

©2018
 MKEC Engineering
 All Rights Reserved
 www.mkec.com

These drawings and their contents, including, but not limited to, all concepts, designs, & ideas are the exclusive property of MKEC Engineering (MKEC), and may not be used or reproduced in any way without the express consent of MKEC.

PPD TITLE SHEET

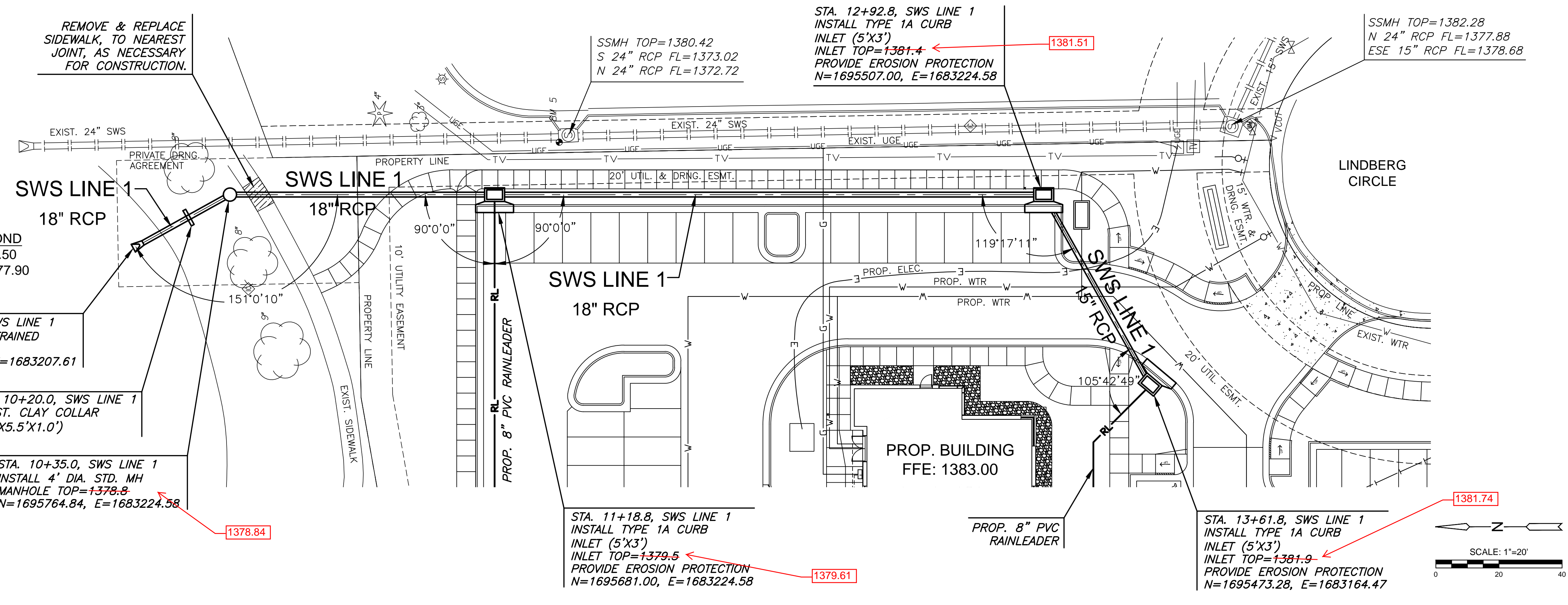
| | | |
|-------------|-----------|---------|
| PROJECT NO. | 0497PPD | |
| DATE | DEC. 2017 | |
| SCALE | 1"=60' | |
| DESIGNED | DRAWN | CHECKED |
| SPE | MKB | SPE |
| NO. | REVISION | DATE |
| | | |
| SHEET NO. | | |
| 01 OF 06 | | |

J:\PROJECTS\2017\10101047 - BOULDER ASSOCIATES WATERFRONT TRANSITIONAL CARE FACILITY - 17447 CAD\SH1505 CIVIL\SW1517447 SWS LINE 1.DWG
 PLOTTED: Tuesday, January 30, 2018 @ 09:59AM

AS BUILTS

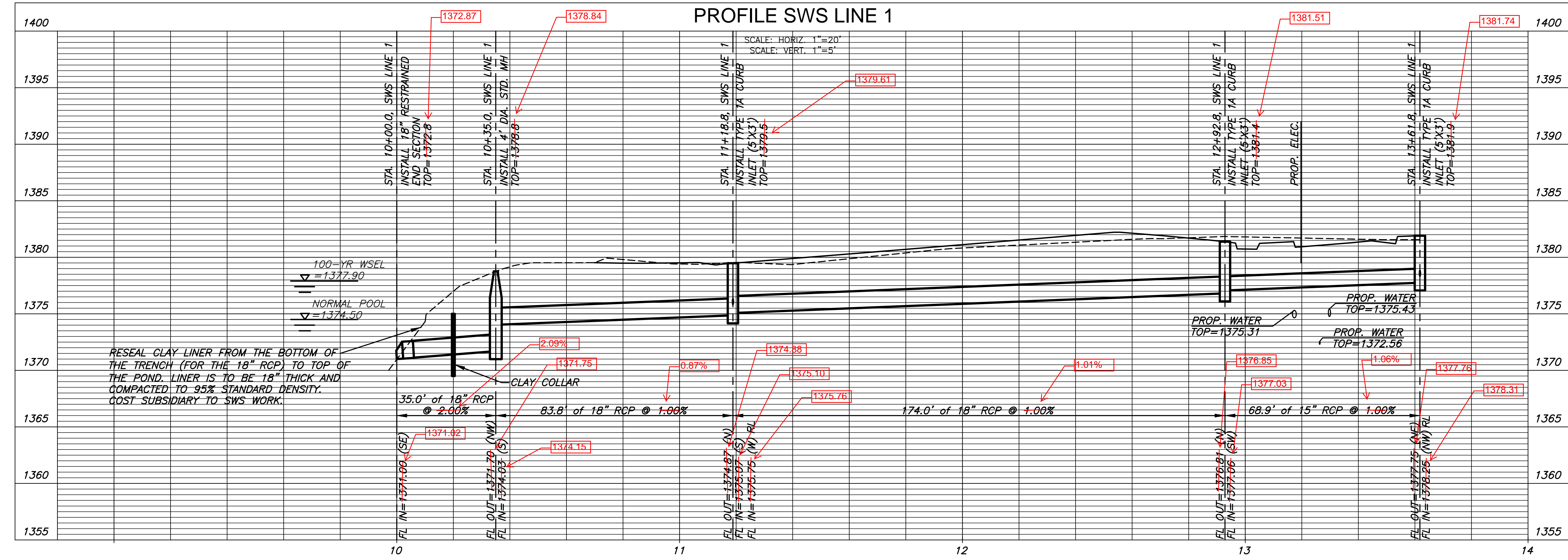
Contractor: McCullough Excavation
 Inspector: Matt Perez
 Date: 4-13-18

KEMILLER
 ENGINEERING PA
 117 E. Lewis,
 Wichita, KS 67202
 (316) 261-8342



- NOTE:**
- CONTRACTOR TO VERIFY THE DEPTH AND LOCATION OF EXISTING UTILITIES PRIOR TO CONSTRUCTION.
 - ANY IRRIGATION LINES, HEADS, CONTROL BOXES, ETC ENCOUNTERED DURING CONSTRUCTION SHALL BE REESTABLISHED WHEN PROJECT IS COMPLETE. COORDINATE WITH LAWN SPRINKLER SERVICES. CONTACT ANDY VEATCH (316-303-1200).
 - SWS LINE 1 SHOULD BE OWNED AND MAINTAINED PRIVATELY.

PLAN SWS LINE 1
PROFILE SWS LINE 1

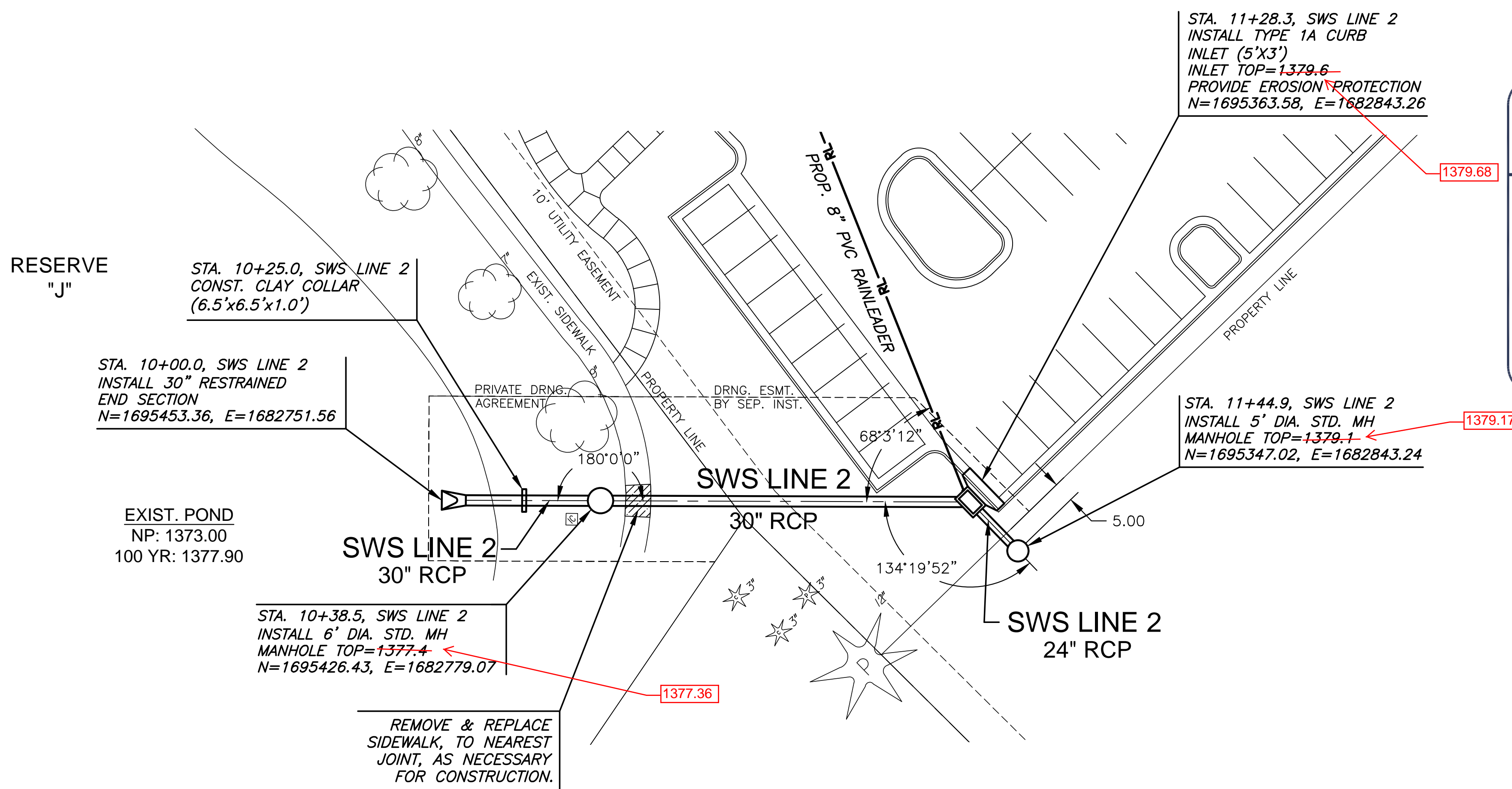


STORM WATER SEWER PLAN FOR
SKILLED NURSING FACILITY
 WATERFRONT SIXTH ADDITION - TRACT 2A

©2018
 MKEC Engineering
 All Rights Reserved
 www.mkec.com
 These drawings and their contents, including, but not limited to, all concepts, designs, & ideas are the exclusive property of MKEC Engineering (MKEC), and may not be used or reproduced in any way without the express consent of MKEC.

| | |
|--------------------|-----------|
| SWS LINE 1 | |
| PROJECT NO. | 0497PPD |
| DATE | DEC. 2017 |
| SCALE | 1"=20' |
| DESIGNED | DRAWN |
| SPE | MKB |
| CHECKED | SPE |
| NO. | REVISION |
| SHEET NO. 02 OF 06 | |

J:\PROJECTS\2017\10\10447_BOUQUER ASSOCIATES WATERFRONT TRANSITIONAL CARE FACILITY_17447_CAD\SH1505 CIVIL\SW817447_SWS LINE 2.DWG
 PLOTTED: Tuesday, January 30, 2018 @ 09:09AM

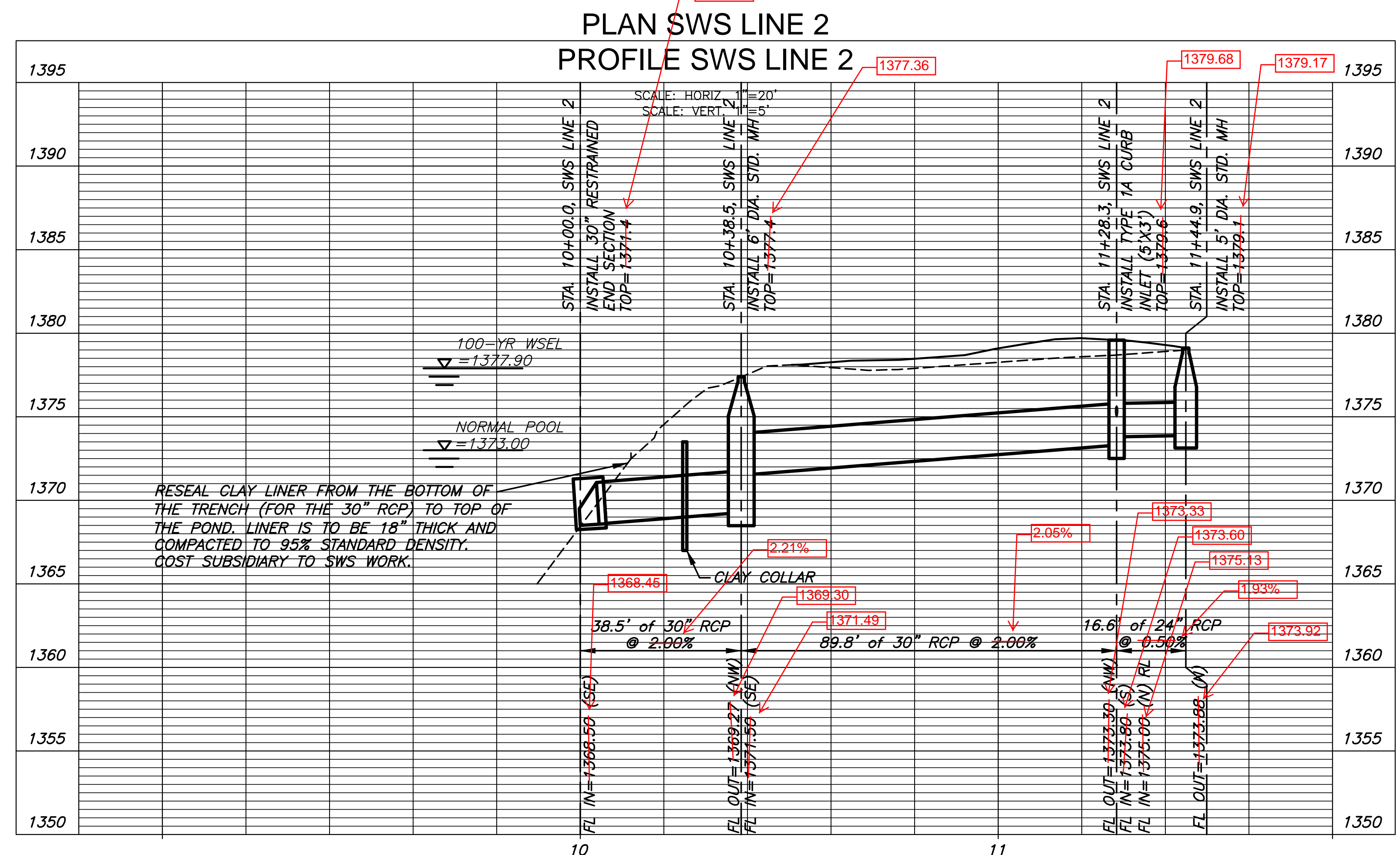


- NOTE:**
- CONTRACTOR TO VERIFY THE DEPTH AND LOCATION OF EXISTING UTILITIES PRIOR TO CONSTRUCTION.
 - ANY IRRIGATION LINES, HEADS, CONTROL BOXES, ETC ENCOUNTERED DURING CONSTRUCTION SHALL BE REESTABLISHED WHEN PROJECT IS COMPLETE. COORDINATE WITH LAWN SPRINKLER SERVICES. CONTACT ANDY VEATCH (316-303-1200).

AS BUILTS

Contractor: McCullough Excavation
 Inspector: Matt Perez
 Date: 4-13-18

117 E. Lewis,
 Wichita, KS 67202 (316)264-0242

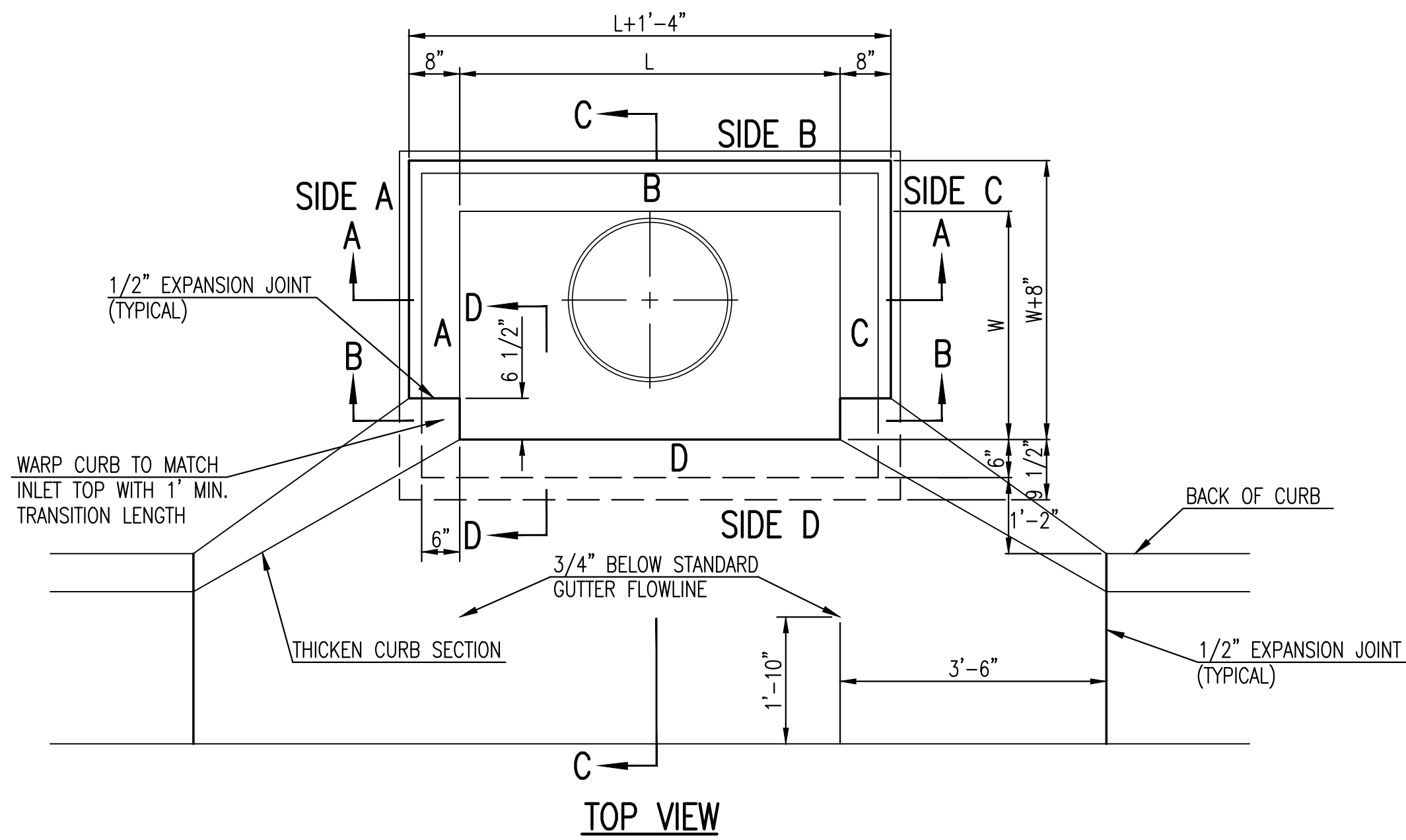


STORM WATER SEWER PLAN FOR
SKILLED NURSING FACILITY
 WATERFRONT SIXTH ADDITION - TRACT 2A

©2018 MKEC Engineering All Rights Reserved
 www.mkec.com
 These drawings and their contents, including, but not limited to, all concepts, designs, & ideas are the exclusive property of MKEC Engineering (MKEC), and may not be used or reproduced in any way without the express consent of MKEC.

| SWS LINE 2 | | |
|--------------------|-----------|---------|
| PROJECT NO. | 0497PPD | |
| DATE | DEC. 2017 | |
| SCALE | 1"=20' | |
| DESIGNED | DRAWN | CHECKED |
| SPE | MKB | SPE |
| NO. | REVISION | DATE |
| SHEET NO. 03 OF 06 | | |

J:\Projects\2017\1701010447_Boulder Associates_Waterfront_Transitional_Care_Facility\17447_CAD\SHITS\05_Civil\Sw\SW-103-Type 1A Inlet (5 and 10).dwg



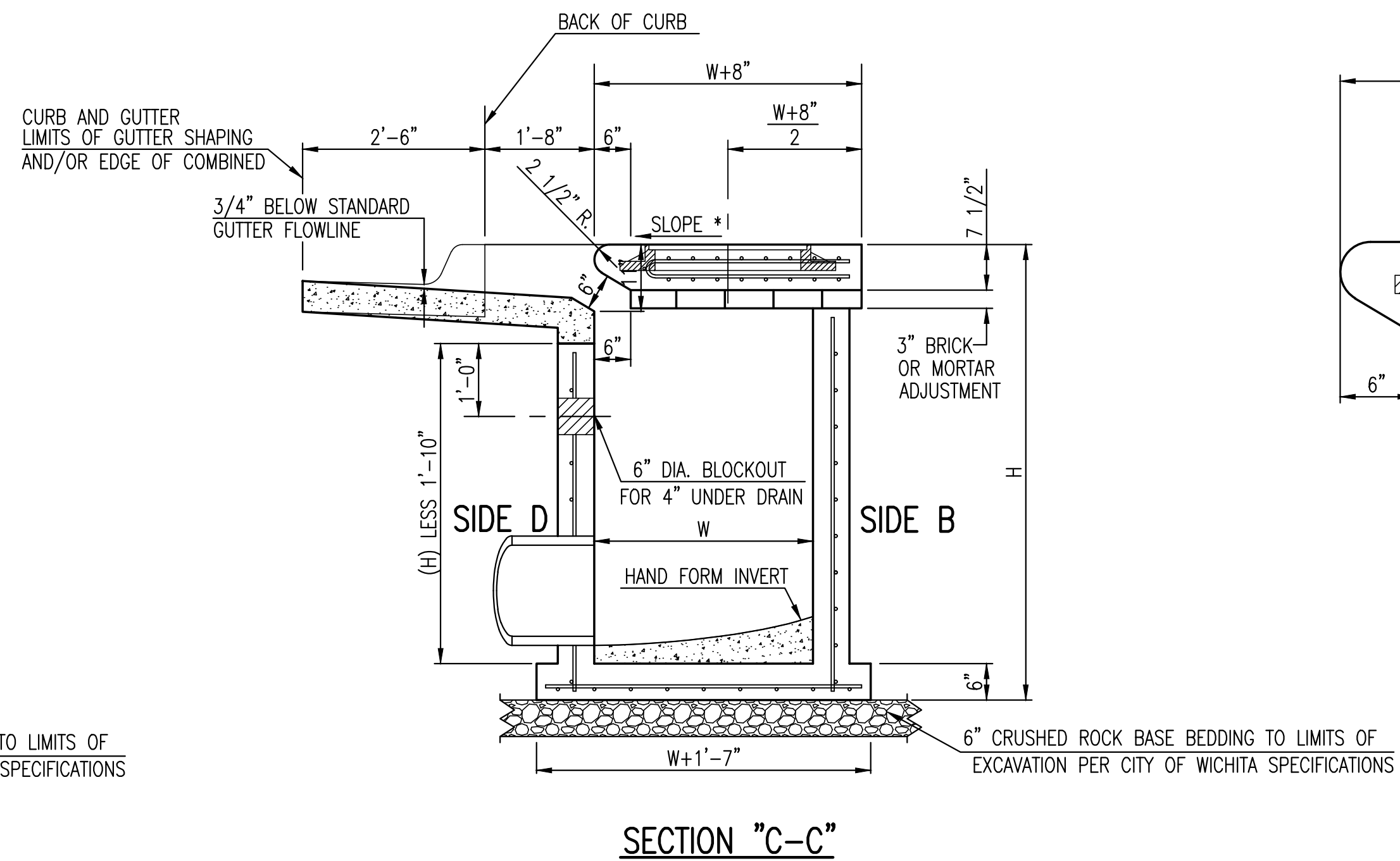
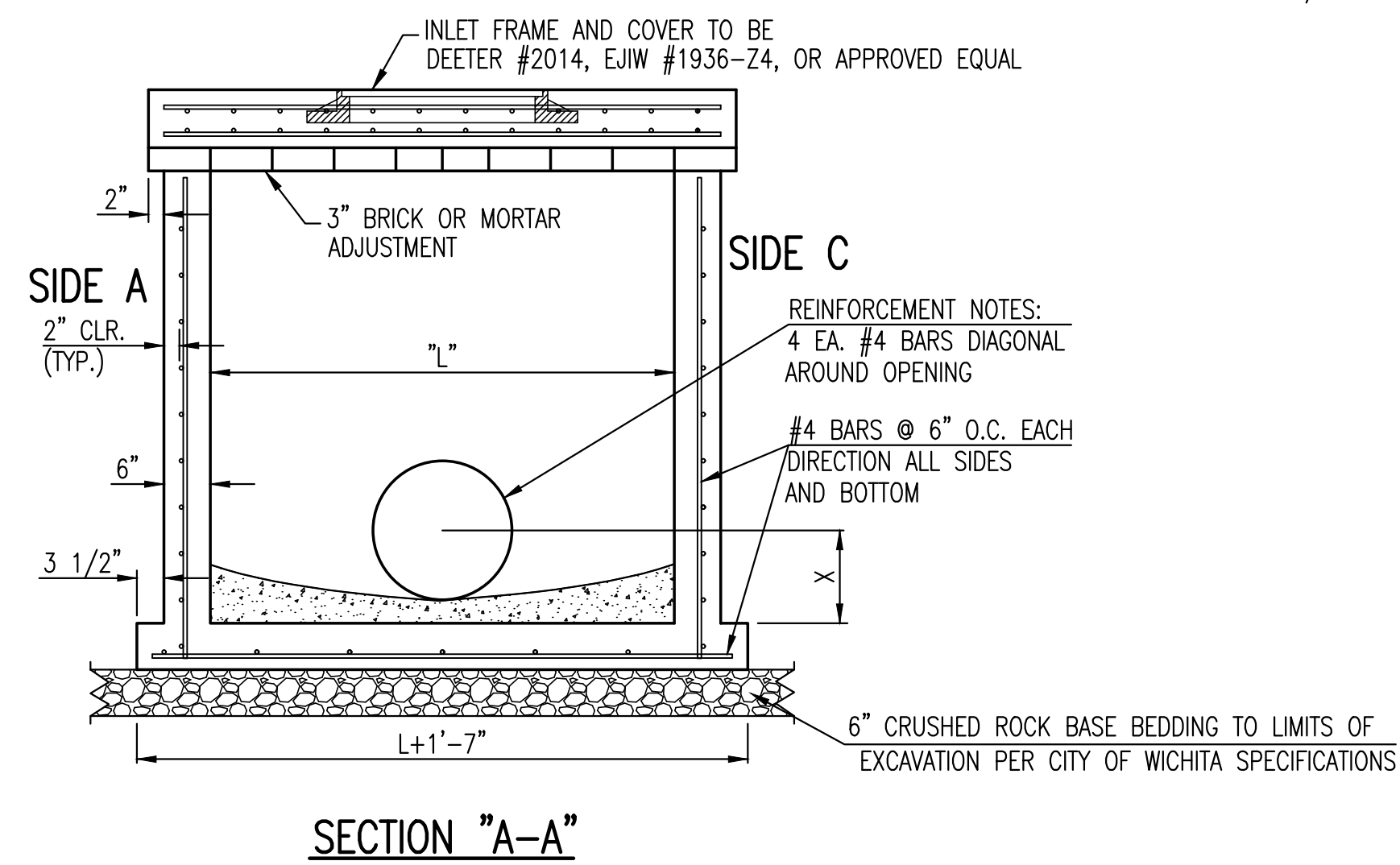
| BAR SCHEDULE | | |
|---------------|---------|---------|
| INLET OPENING | B1 BARS | SPACING |
| 5'-0" | #4 | 4" |
| 10'-0" | #6 | 3.5" |

| PRECAST CURB INLET WIDTHS | | | | |
|---------------------------|-------------------|---------|--------|---------------|
| W | PRE-CAST TOP SIZE | | | PIPE DIA.** |
| | WIDTH | LENGTH | TOP | |
| 3'-0" | W+8" | L+1'-4" | 7 1/2" | 21" & SMALLER |
| 4'-0" | W+8" | L+1'-4" | 7 1/2" | 24" & 30" |
| 5'-0" | W+8" | L+1'-4" | 7 1/2" | 36" & 42" |
| 6'-0" | W+8" | L+1'-4" | 7 1/2" | 48" & 54" |
| 7'-0" | W+8" | L+1'-4" | 7 1/2" | 60" & 66" |

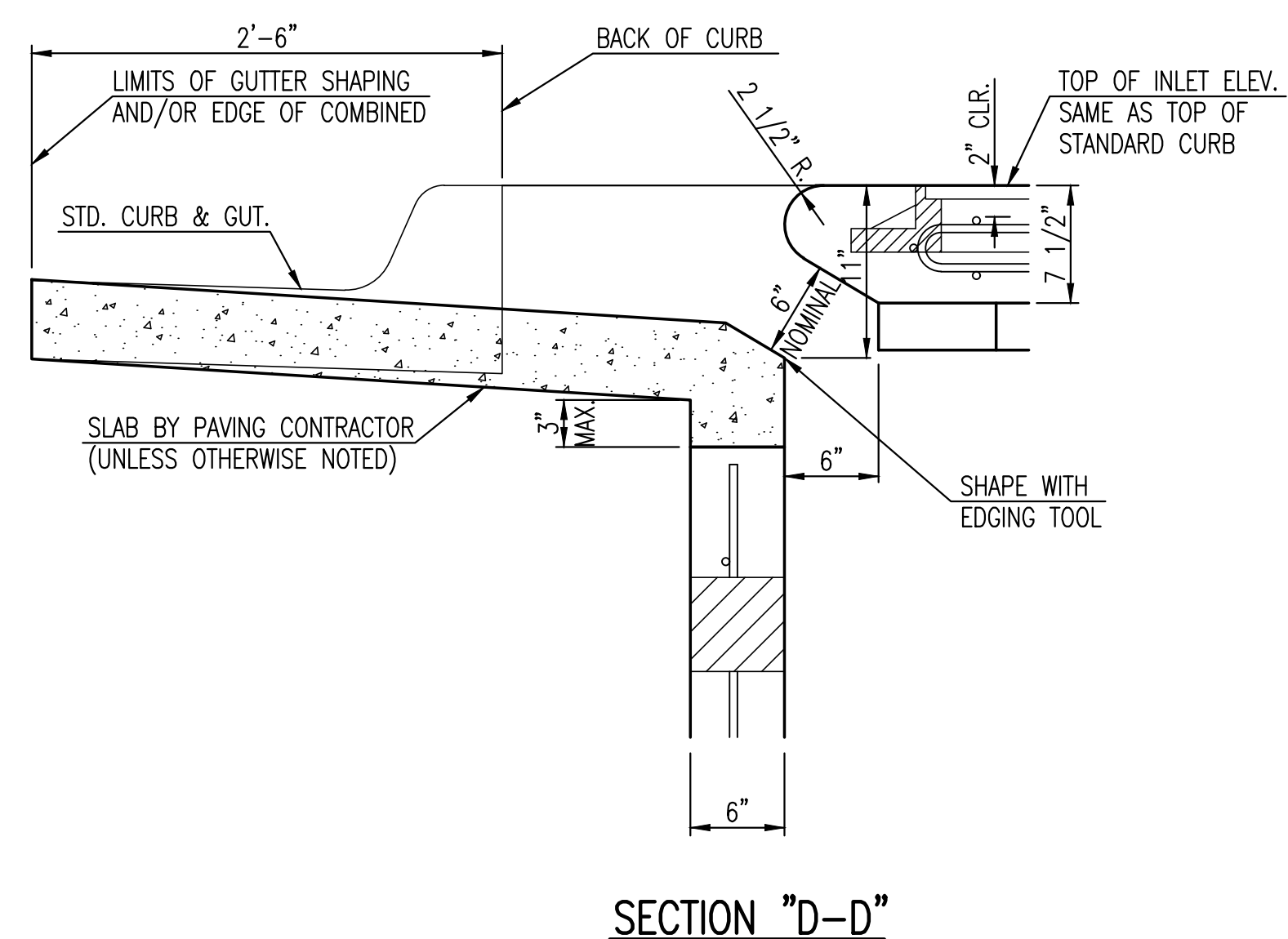
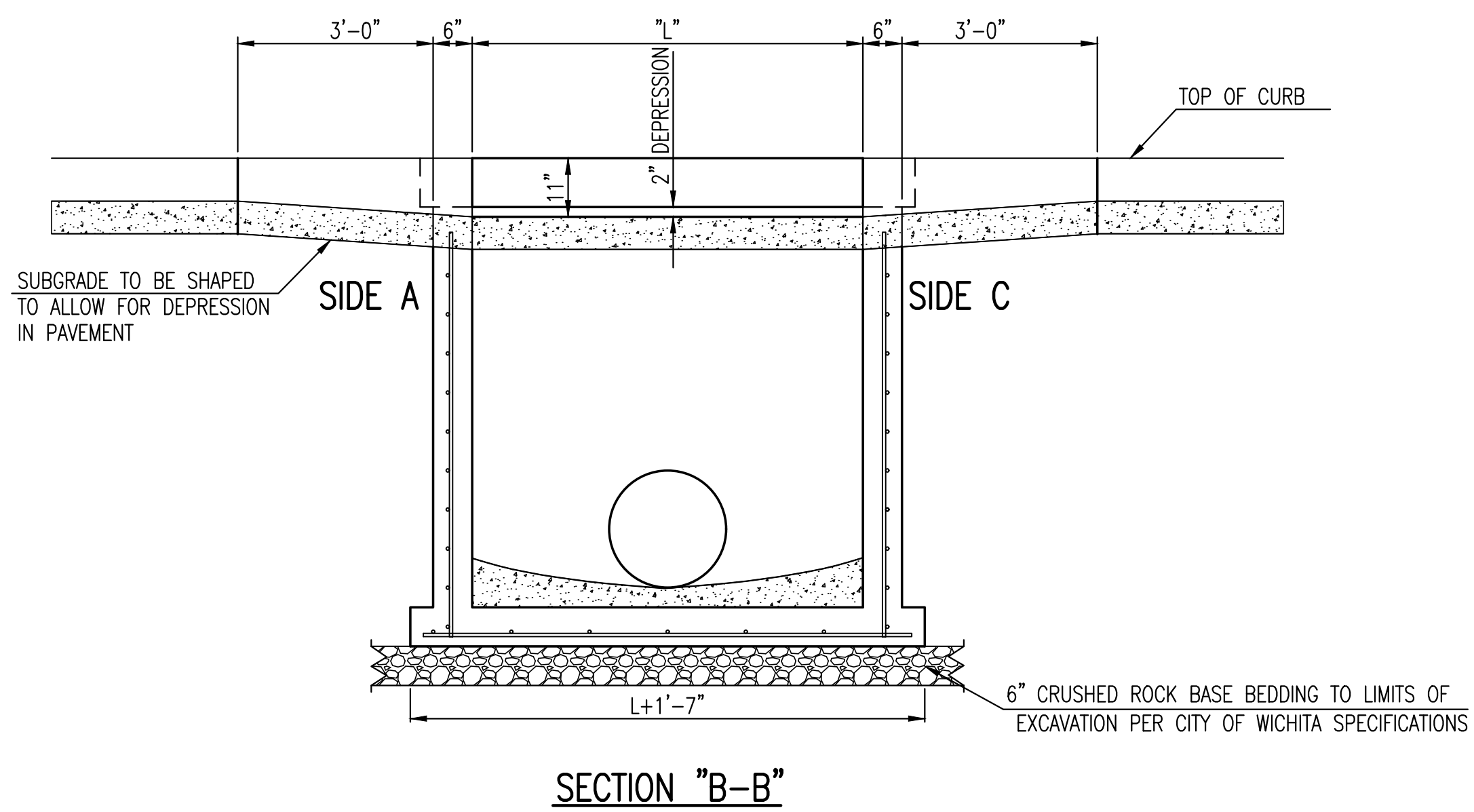
** FOR PIPES PERPENDICULAR TO INLET WALL


GENERAL NOTES

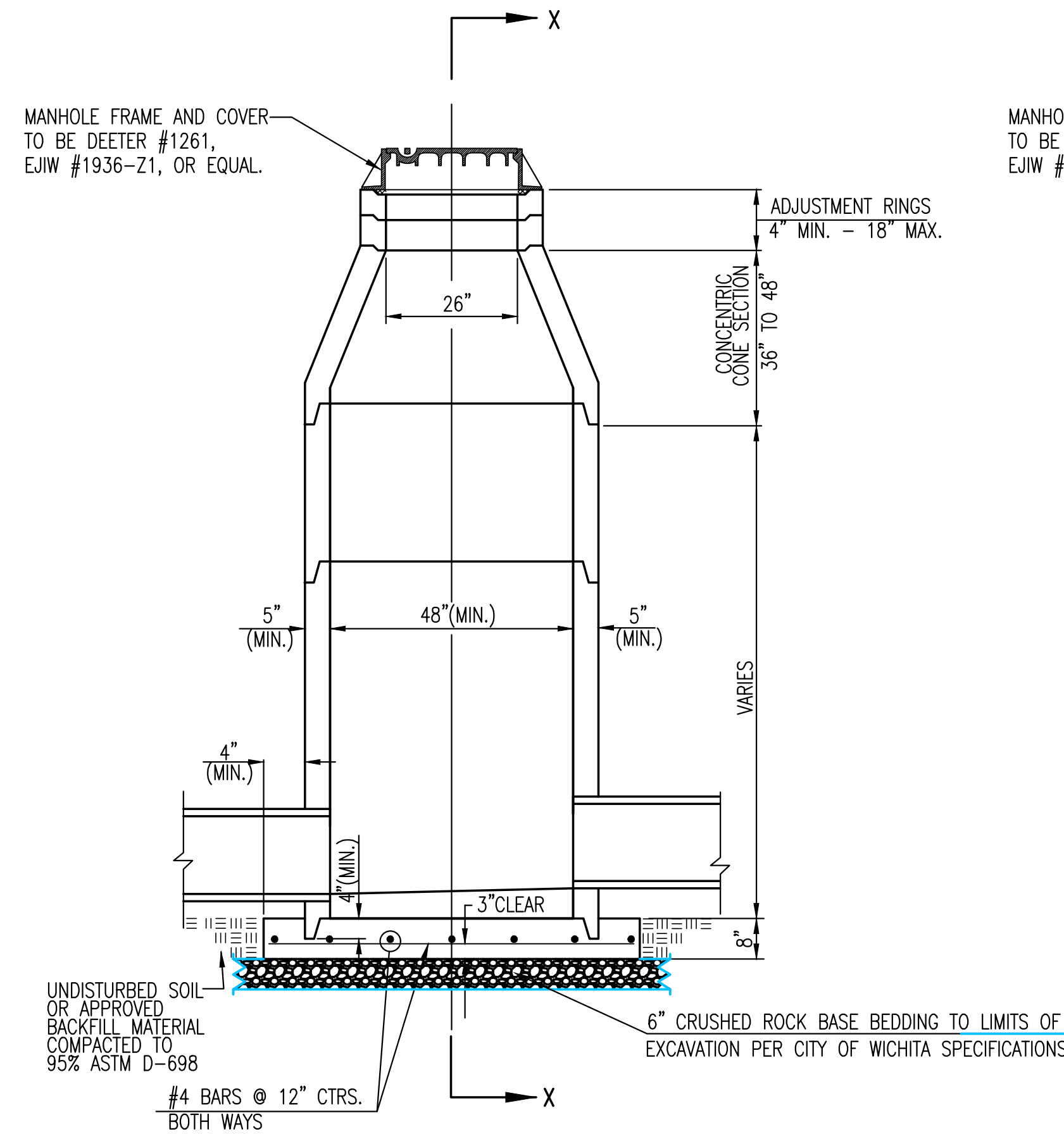
1. CONCRETE TOPS TO BE INSTALLED ON THIN MORTAR CUSHION TO INSURE FULL SUPPORT ALONG BRICK. CONCRETE TOPS MAY BE CAST IN PLACE OR PRECAST. CONCRETE USED FOR INLET CONSTRUCTION SHALL CONFORM TO CITY OF WICHITA SPECIFICATIONS FOR CONCRETE PAVEMENT MIX.
2. CONTRACTOR SHALL HAVE THE OPTION OF CONSTRUCTING 8" BRICK MASONRY WALLS BETWEEN THE CONCRETE INLET BASE AND TOP OF THIS INLET WHEN W=5'-0" AND H=7'-0" OR LESS.
3. INLET INVERT SHALL BE SHAPED WITH 8 SACK SAND MIX CONCRETE TO CREATE FLOW CHANNELS AND TO INCREASE HYDRAULIC EFFICIENCY SUCH THAT THE INLET WILL BE SELF CLEANING BETWEEN ALL INLET AND/OR OUTLET PIPES.
4. THE ENDS OF ALL PIPES INSTALLED IN INLETS SHALL BE CUT OFF FLUSH WITH THE INSIDE FACE OF THE INLET WALL.
5. INLET FRAME AND COVER TO BE DEETER #2014, EJIW #1936-Z4, OR APPROVED EQUAL, SEE SW-303.
6. CONTRACTOR SHALL REMOVE LIFTING HOOKS AFTER INSTALLATION. RECESSES IN INLET WALL SHALL BE GROUDED FLUSH TO THE INLET WALL WITH HYDRAULIC CEMENT AFTER THE INLET IS IN PLACE. LIFTING HOLES THRU THE INLET WALL WILL NOT BE ACCEPTED.



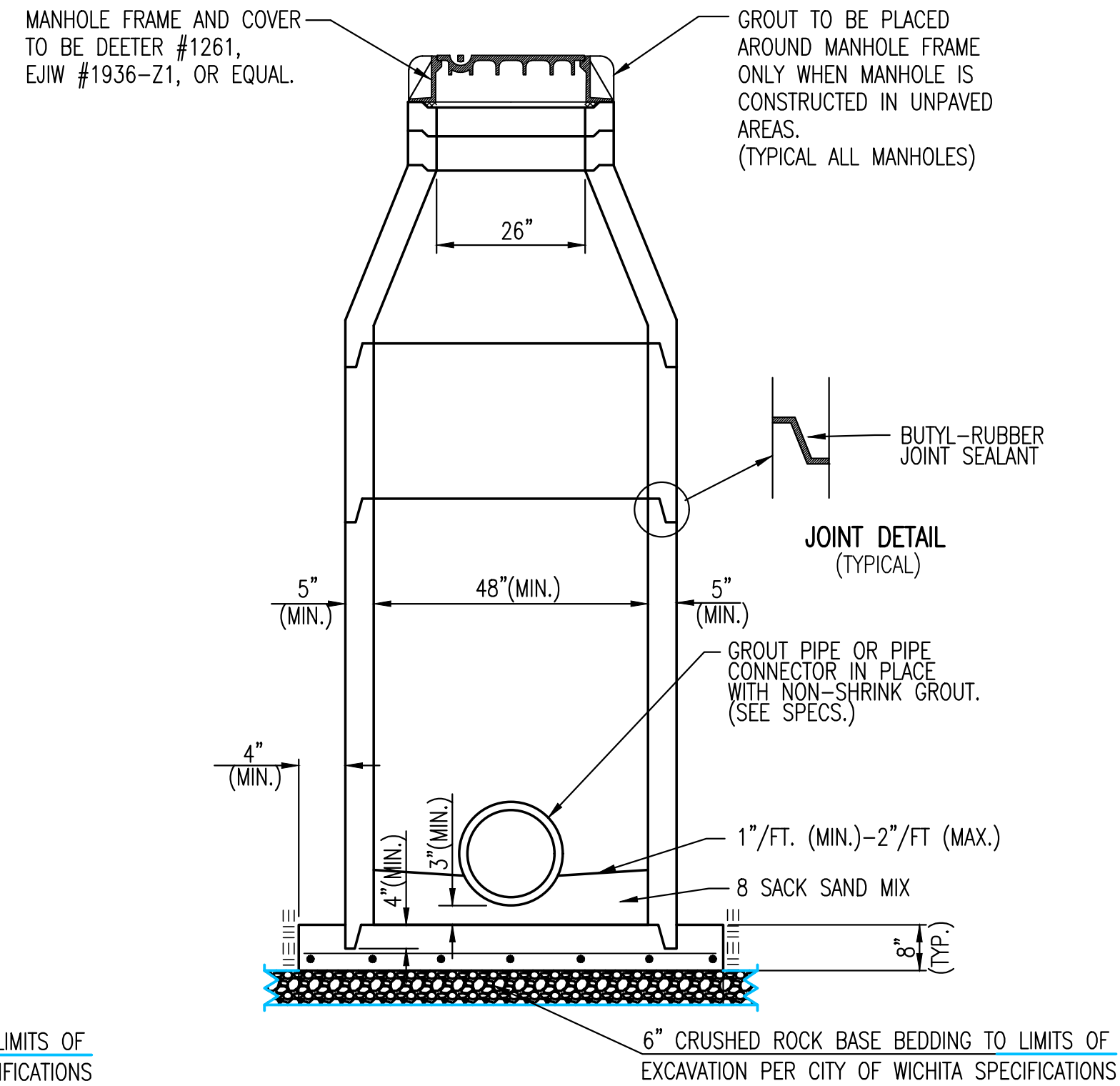
NOTES:
* SLOPE OF INLET TOP TO MATCH SIDEWALK OR PARKING SLOPES WITHIN LIMITS INDICATED.



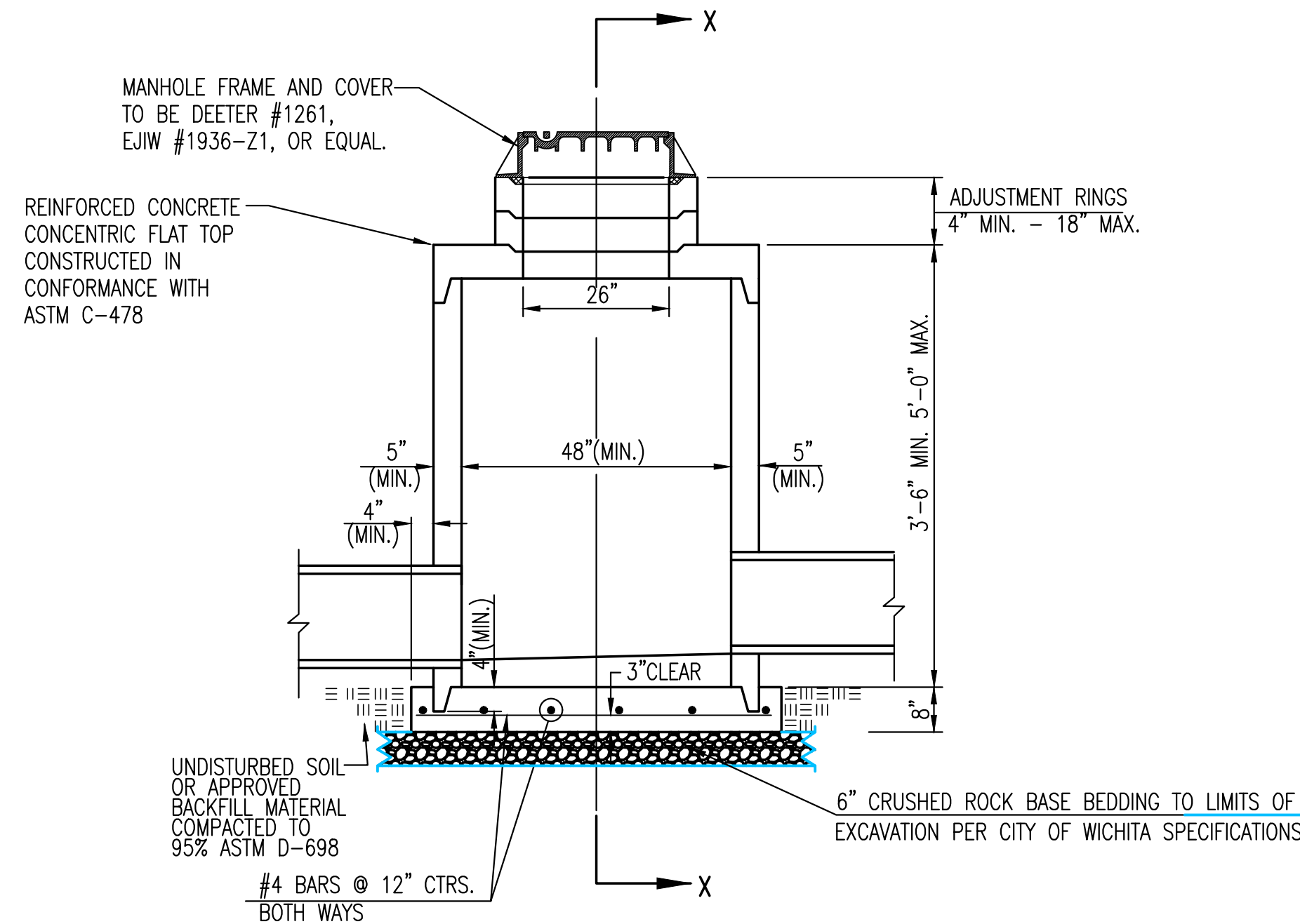
| | | | |
|--|------------|--|----------|
| REVISION MAY 2017 | | UPDATED SET BACK DIMENSION ON TOP VIEW | |
|  | | | |
| STANDARD TYPE 1A CURB INLET 5'-0" OR 10'-0" OPENING | | | |
| CITY ENGINEER GARY JANZEN, P.E. | | | |
| PROJECT NUMBER | OCA NUMBER | DATE | |
| 0497PPD | 133119 | DEC. 2017 | |
| CITY ENGINEER'S OFFICE | | | SHEET |
| CITY HALL - SEVENTH FLOOR 455 NORTH MAIN STREET WICHITA, KANSAS 67202-1620 (316) 268-4501 | | | 04 OF 06 |



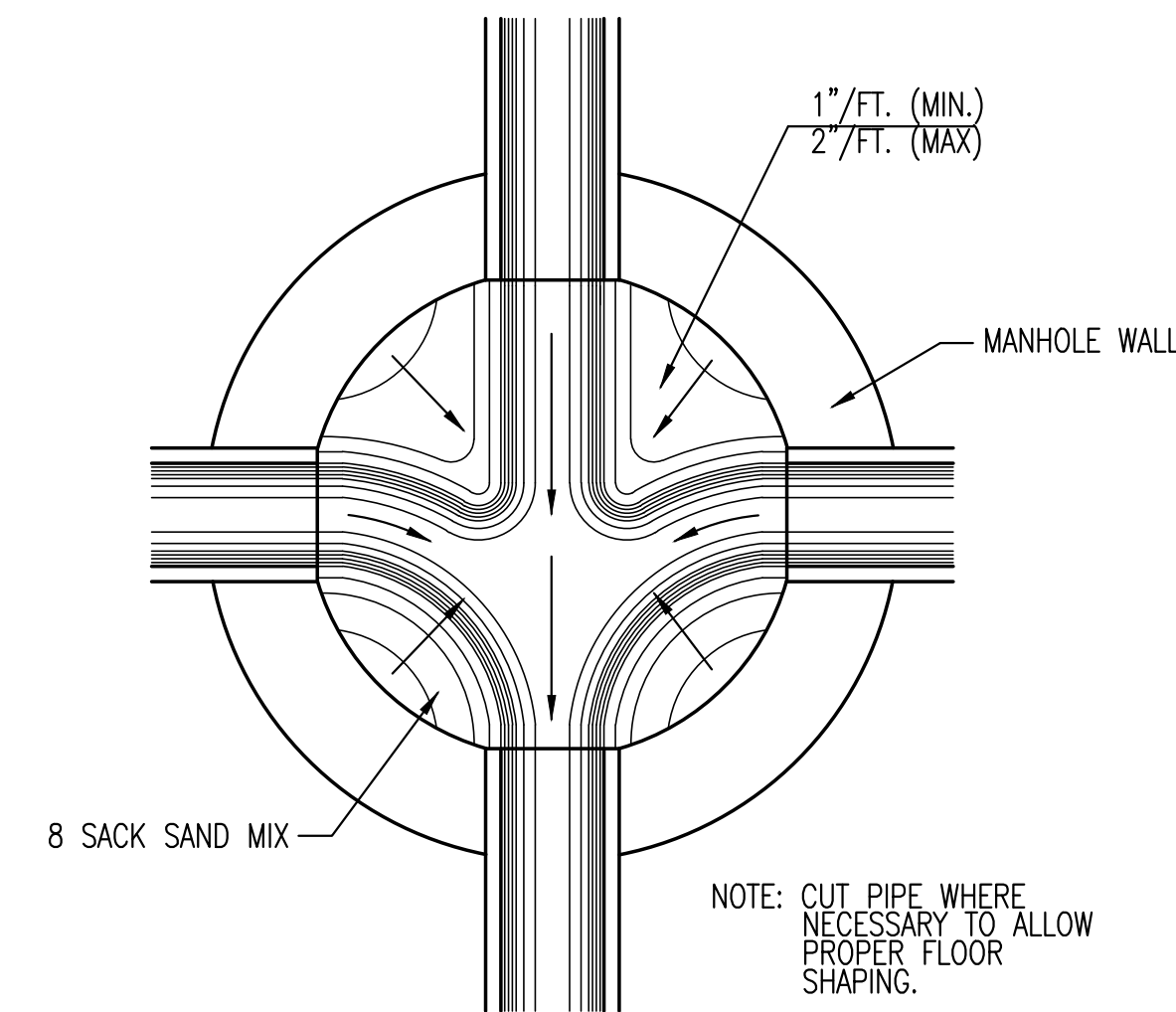
PRECAST STANDARD MANHOLE TYPE "A"



SECTION X-X (TYPICAL)



PRECAST SHALLOW MANHOLE TYPE "B"



TYPICAL MANHOLE FLOOR SHAPING

GENERAL NOTES

- IF, IN THE OPINION OF THE ENGINEER, THE MANHOLE SUBGRADE APPEARS UNSTABLE, THE CONTRACTOR WILL HAVE THE OPTION TO COMPACT SUBGRADE AS SHOWN OR INCREASE THE THICKNESS OF THE MANHOLE BASE AS DIRECTED BY THE ENGINEER.
- STEEL REINFORCING WILL BE REQUIRED IN ALL MANHOLE BASES.
- ALL MANHOLE CONSTRUCTION SHALL BE WATER TIGHT.
- TOP OF MANHOLE FLOOR SLAB SHALL BE AT LEAST 3 INCHES BELOW THE FLOW LINE OF THE OUTLET PIPE TO INSURE SUFFICIENT MINIMUM THICKNESS OF SHAPED INVERT.
- ALL PRECAST CONCRETE MANHOLE SECTIONS SHALL CONFORM TO THE LATEST REVISION OF ASTM C-478 AS MODIFIED BY THE SPECIFICATIONS.
- CONCRETE USED FOR MANHOLE CONSTRUCTION SHALL CONFORM TO CITY OF WICHITA SPECIFICATIONS FOR CONCRETE PAVEMENT MIX.
- PRECAST MANHOLES SHALL BE SET AT LEAST 4 INCHES INTO MANHOLE BASE.
- MANHOLES WITH PIPE SIZES 24" AND LARGER SHALL HAVE 5 FOOT INSIDE DIAMETER (MIN.)
- MANHOLES WITH PRECAST BASES MAY BE USED AT THE CONTRACTORS OPTION. THESE MANHOLES SHALL HAVE AN 8" MINIMUM BASE THICKNESS AND SHALL BE PLACED ON AN 8" MIN. CRUSHED ROCK BASE. PIPES SHALL BE ENCASED WITH CRUSHED ROCK TO AT LEAST 3 FEET FROM THE MANHOLE WALL.
- CONTRACTOR SHALL REMOVE LIFTING HOOKS AFTER INSTALLATION. RECESSES IN MANHOLE WALL SHALL BE GROUTED FLUSH TO THE MANHOLE WALL WITH HYDRAULIC CEMENT AFTER THE MANHOLE IS IN PLACE. LIFTING HOLES THRU THE MANHOLE WALL WILL NOT BE ACCEPTED.
- THE ENDS OF ALL PIPES IN MANHOLES SHALL BE CUT OFF FLUSH WITH THE INSIDE FACE OF THE MANHOLE WALL.
- MANHOLE INVERT SHALL BE SHAPED WITH 8 SACK SAND MIX CONCRETE TO CREATE FLOW CHANNELS AND TO INCREASE HYDRAULIC EFFICIENCY SUCH THAT THE MANHOLE WILL BE SELF CLEANING BETWEEN ALL INLET AND/OR OUTLET PIPES.
- MANHOLE FRAME AND COVER TO BE DEETER #1261, EJIW #1936-Z1, OR APPROVED EQUAL, SEE SW-303.
- FOR FLAT GRATED INLET APPLICATION, GRATE TO BE DEETER #1933, EJIW #1205 MDI, OR APPROVED EQUAL.
- FOR BEEHIVE GRATE APPLICATION, GRATE TO BE DEETER #4495, EJIW #120545, OR APPROVED EQUAL.

REVISED: MARCH 2015

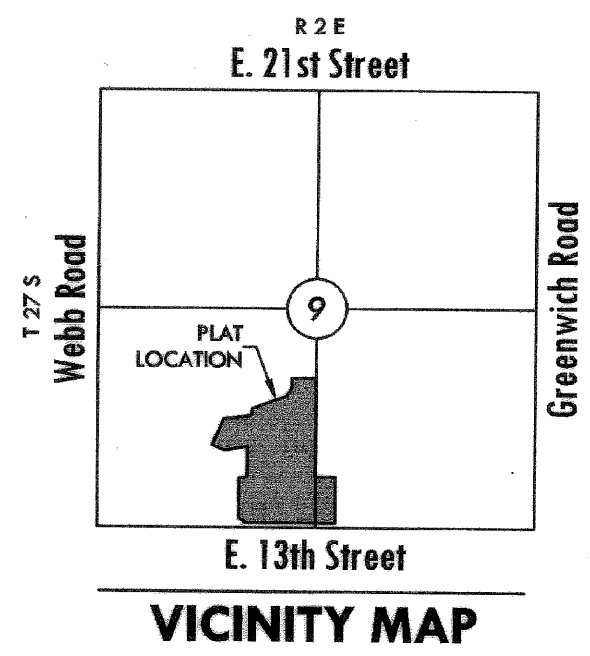
CITY OF WICHITA
PUBLIC WORKS & UTILITIES
ENGINEERING DIVISION

| | | |
|--|------------|-----------|
| <p>PRECAST CONCRETE MANHOLE (STORM SEWER)</p> <p>CITY ENGINEER GARY JANZEN, P.E.</p> | | |
| PROJECT NUMBER | OCA NUMBER | DATE |
| 0497PPD | 133119 | DEC. 2017 |
| CITY ENGINEER'S OFFICE | | SHEET |
| CITY HALL - SEVENTH FLOOR 455 NORTH MAIN STREET WICHITA, KANSAS 67202-1620 (316) 268-4501 | | 05 OF 06 |

FINAL PLAT

THE WATERFRONT SIXTH ADDITION

AN ADDITION TO WICHITA, SEDGWICK COUNTY, KANSAS



BENCH MARK

□ Square cut on SW. corner of signal light pole base at NE. corner of Webb Rd. and 13th St.
Datum BM Elev.=1373.345 (NGVD 29)

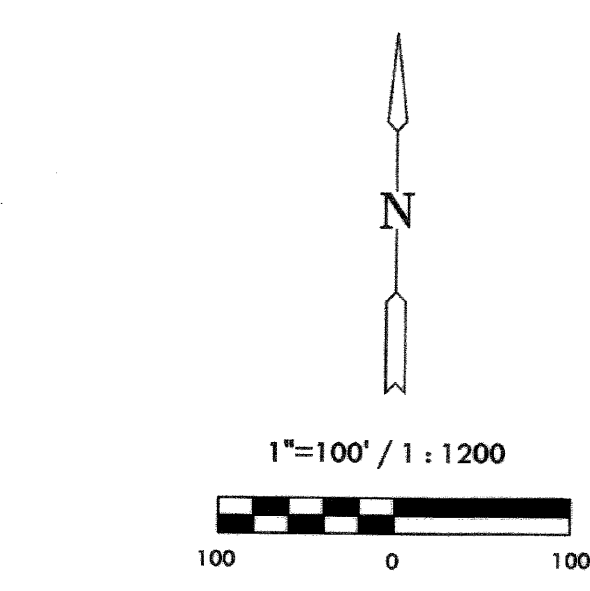
| MINIMUM PAD ELEVATION LOWEST BUILDING OPENING | | |
|--|-------|----------------------|
| LOT | BLOCK | ELEVATION NGVD 29 |
| 2 | 1 | 1380.5 |
| N. 550.53' of 3 | 1 | 1380.5 |
| S. 265.0' of 3 | 1 | 1386.1 |
| N. 270.0' of 4 | 1 | 1386.1 |

| STREET CENTERLINE TABLE | | |
|-------------------------|---------|-------------|
| LINE | LENGTH | BEARING |
| L1 | 526.69' | N00°59'11"W |
| L2 | 67.65' | N15°25'33"E |
| L3 | 141.50' | S89°00'49"W |
| L4 | 45.00' | S75°42'05"W |

| STREET CENTERLINE CURVE TABLE | | | |
|-------------------------------|---------|---------|-----------|
| CURVE | LENGTH | RADIUS | DELTA |
| C1 | 156.40' | 600.00' | 14°56'06" |
| C2 | 218.84' | 400.00' | 31°20'50" |
| C3 | 193.87' | 300.00' | 37°01'32" |
| C4 | 82.78' | 200.00' | 23°42'48" |
| C5 | 64.31' | 215.00' | 17°08'21" |

NOTES

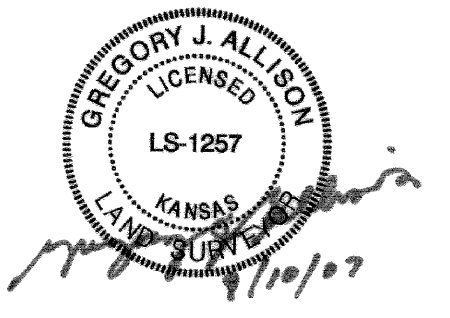
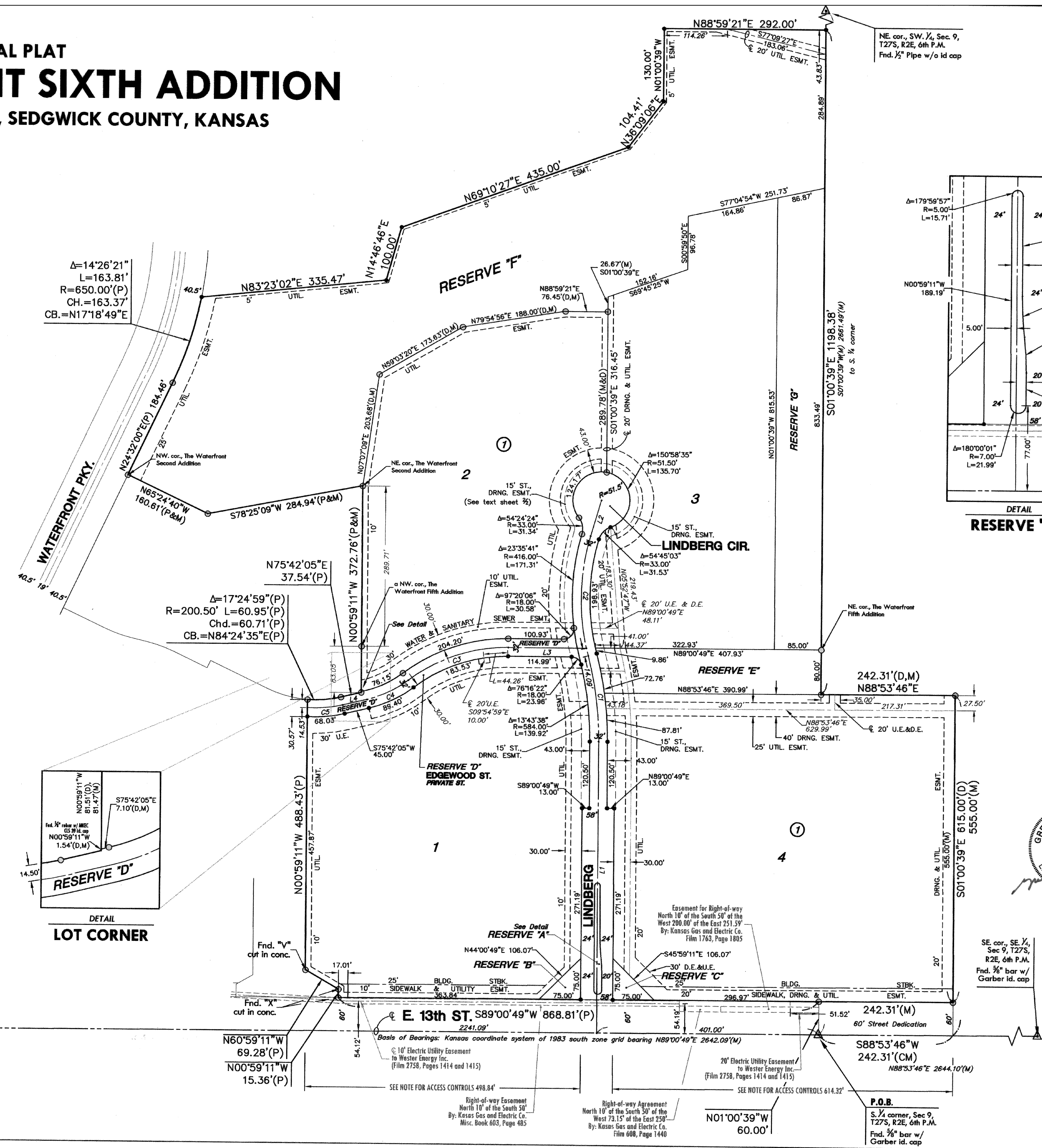
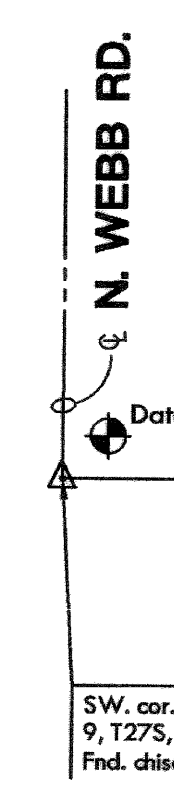
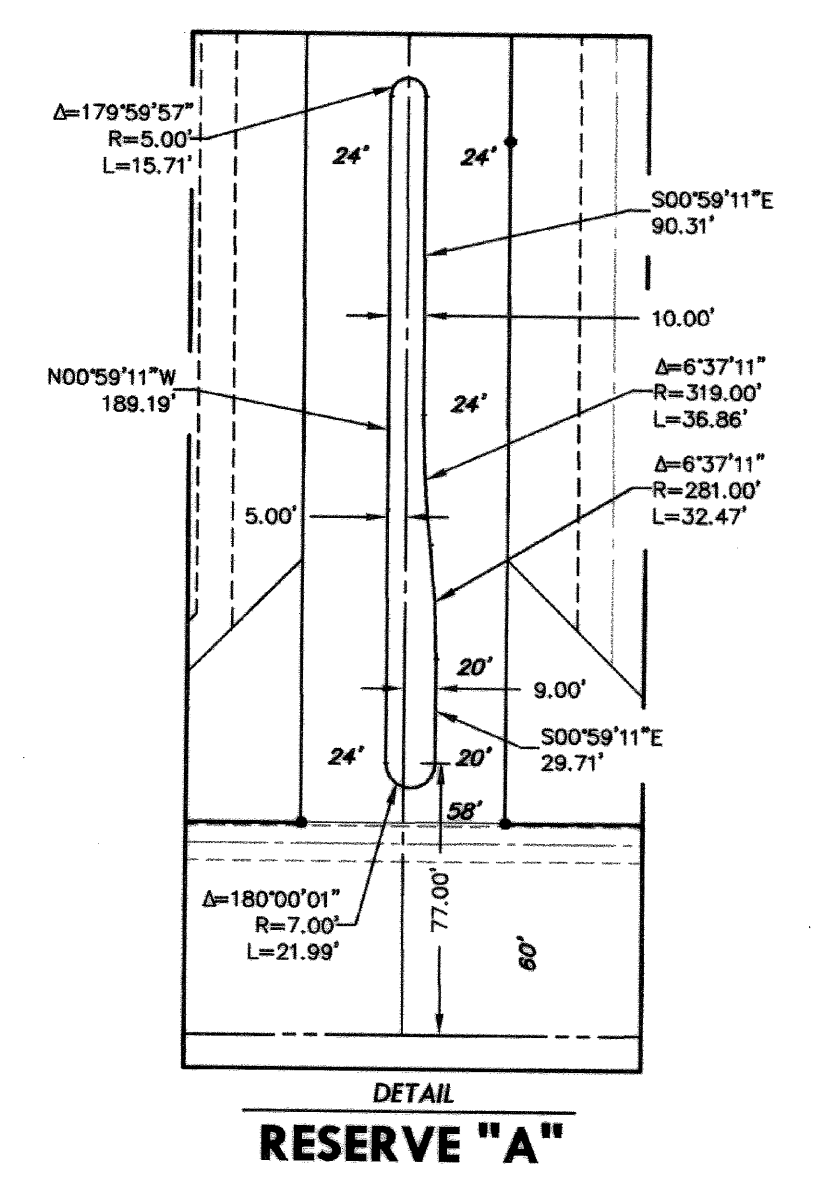
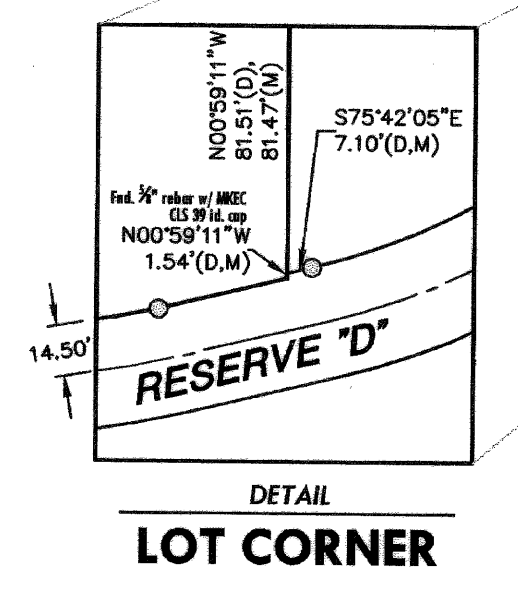
- Access Controls:**
13th Street - Access points for Block 1 shall be placed accordingly. The minimum distance between full turning movement drives shall be 400'. The minimum distance between a right-in/right-out drive and either another right-in/right-out drive or a full movement drive shall be 200'.
- Street Drainage Easements:**
Along Lindberg Street and Lindberg Circle where there is 32' of right-of-way a 15' street drainage easement is provided abutting and adjoining the 32' right-of-way as indicated.



Basis of Bearing: Kansas coordinate system of 1983 south zone grid bearing of N89°00'49"E along the S. line of SW. 1/4, Sec. 9, T27S, R2E, 6th P.M.

LEGEND

- Date of Survey: July, 2006
- △ = Section corner Monument Found
 - = Found 3/8" Rebar w/ MKEC CLS 39 id. cap
 - = Set 3/8" Rebar w/ MKEC CLS 39 id. cap
 - (M) = Measured
 - (CM) = Calculated from measured
 - (P) = Platted
 - (D) = Described or Record Dimension



PRIVATE STORM WATER SEWER PLAN FOR
SKILLED NURSING FACILITY
WATERFRONT SIXTH ADDITION - TRACT 2A

©2018 MKEC Engineering All Rights Reserved
www.mkec.com
These drawings and their contents, including, but not limited to, all concepts, designs, & ideas are the exclusive property of MKEC Engineering (MKEC), and may not be used or reproduced in any way without the express consent of MKEC.

**FINAL PLAT
(WATERFRONT 6TH)**

| | | |
|-------------|-----------|---------|
| PROJECT NO. | 0497PPD | |
| DATE | DEC. 2017 | |
| SCALE | AS SHOWN | |
| DESIGNED | DRAWN | CHECKED |
| SPE | MKB | SPE |

| | | |
|-----|----------|------|
| NO. | REVISION | DATE |
| | | |

MKEC
ENGINEERING
CONSULTANTS, INC.
411 N. WEBB ROAD
WICHITA, K.S. 67206
316-684-9600

J:\PROJECTS\2017\101010447_BOLDER ASSOCIATES WATERFRONT TRANSITIONAL CARE FACILITY_17447_CAD\SHOTS\CIVIL\SW\6TH_FINAL_PLAT_17447.DWG (WATERFRONT 6TH) - PPD.DWG PLOTTED: Tuesday, January 30, 2018 @ 08:11AM