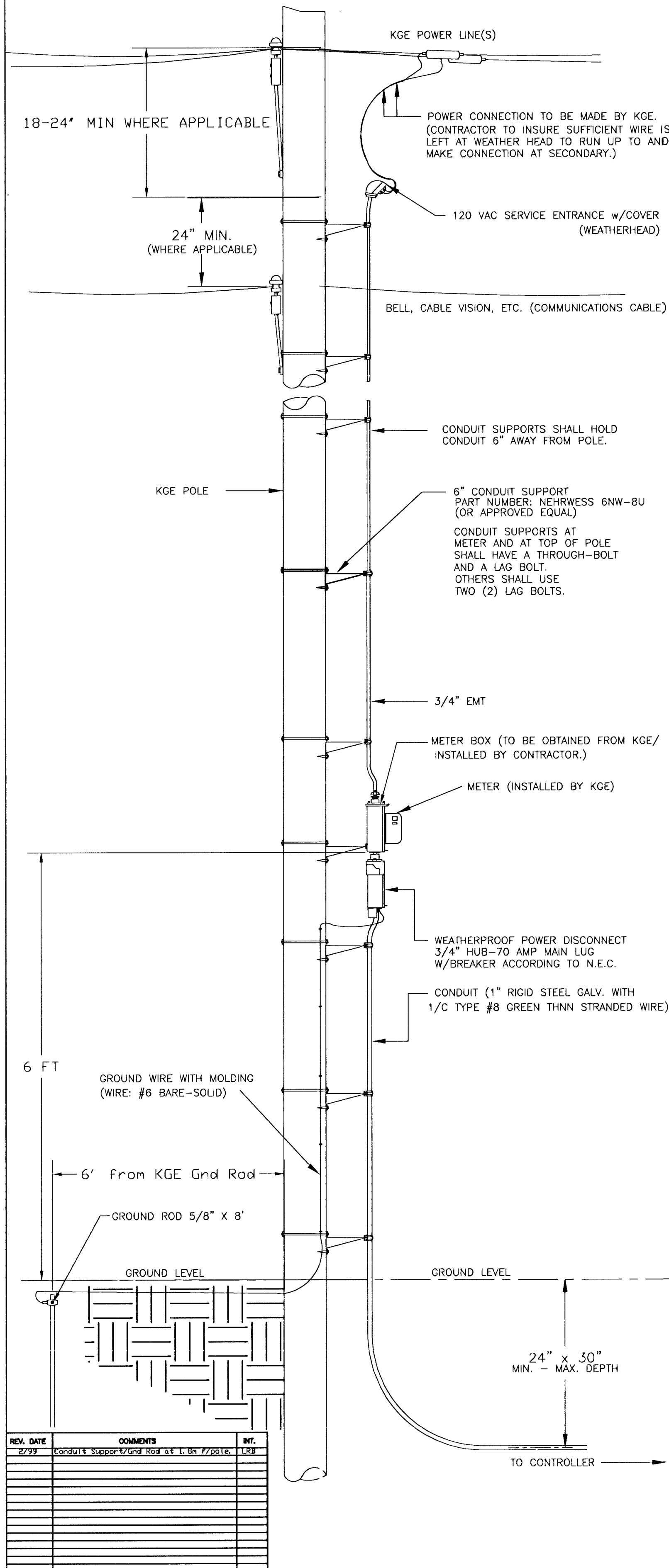
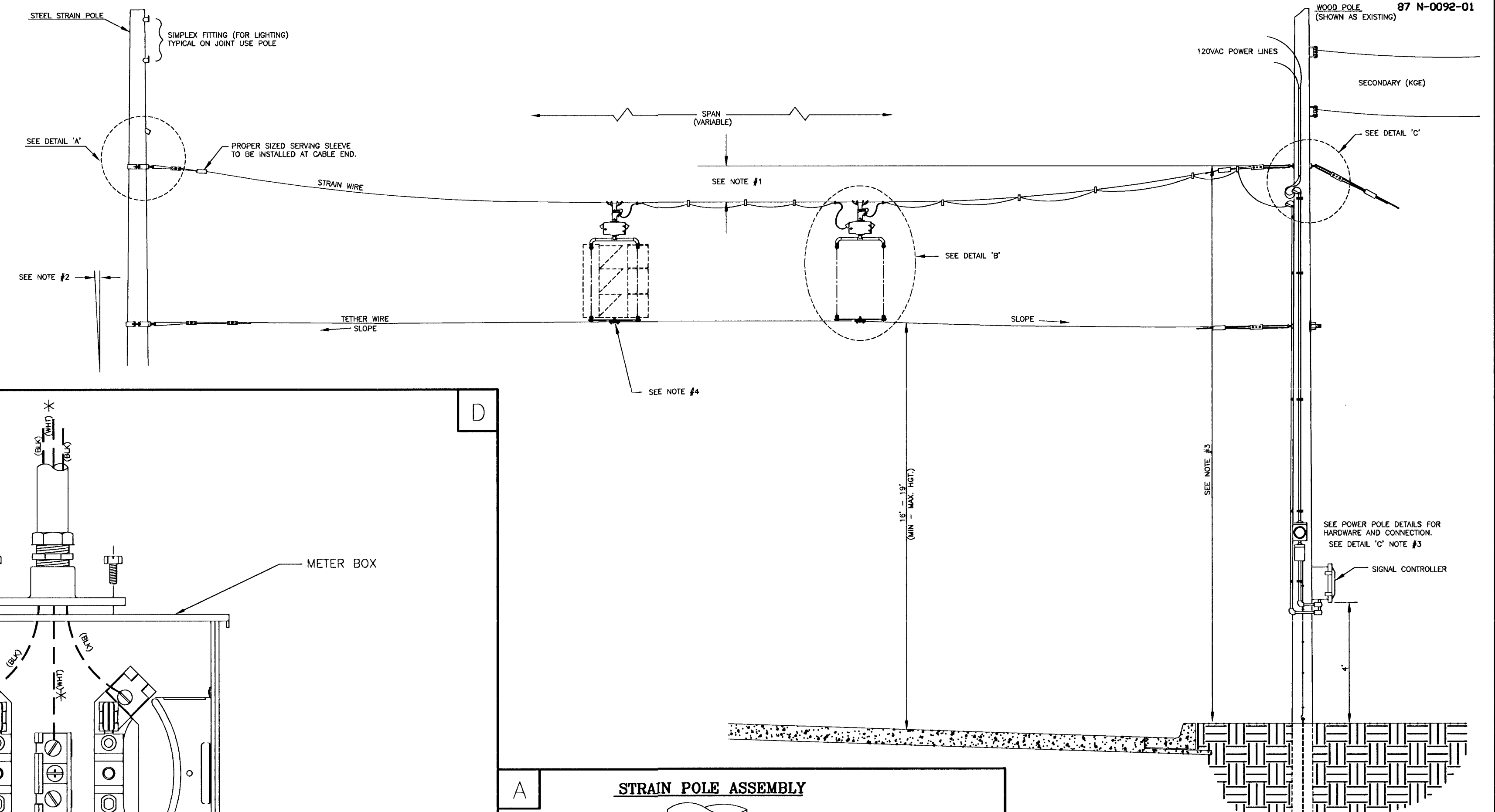


POWER POLE DETAILS



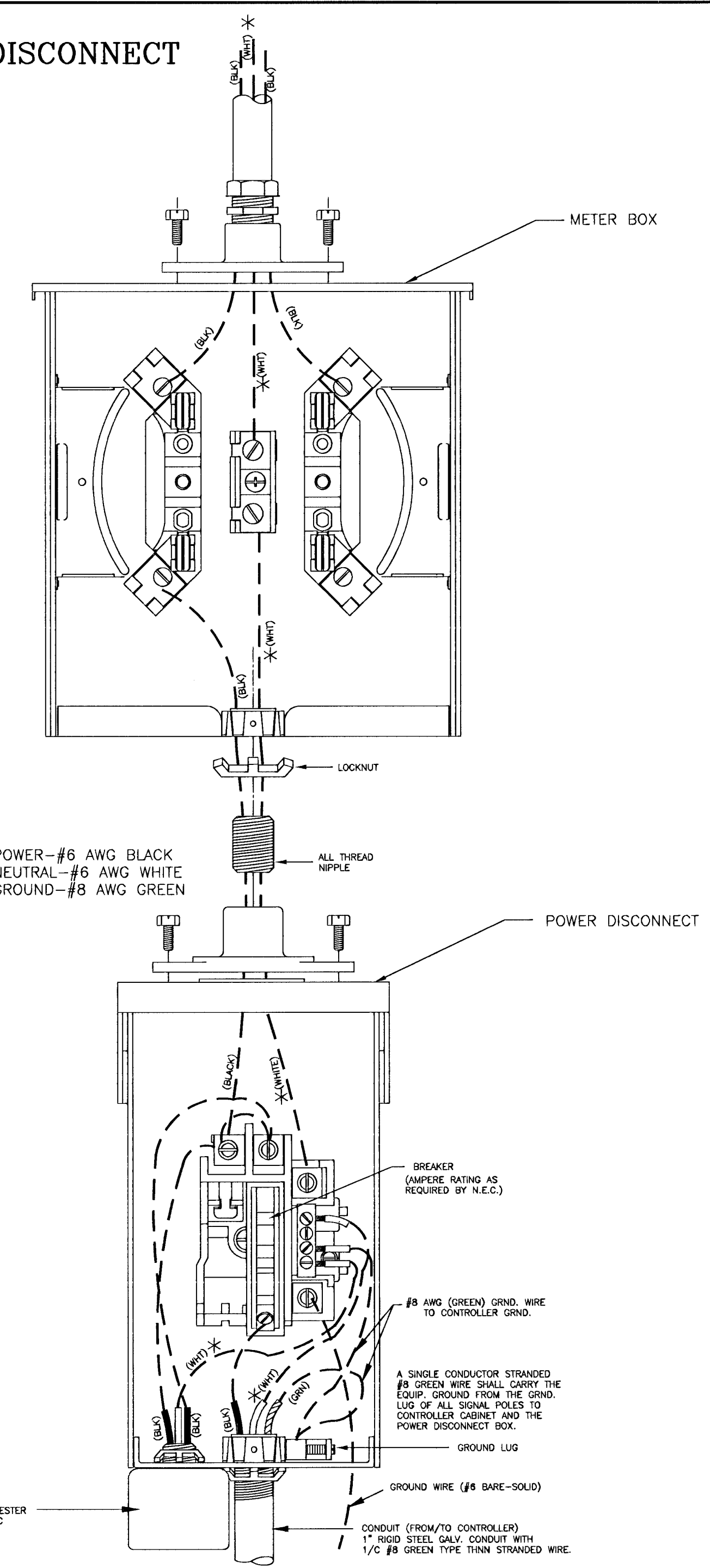
SPANWIRE ASSEMBLY DETAILS

1. MAX. SAG = 5% OF SPAN.
2. STANDARD BACKRAKE = 1.5'
3. HEIGHT OF STRAIN WIRE HOOK-UP TO BE DETERMINED BY FIELD ENGINEER. TRAFFIC SIGNAL CABLE TO BE SECURED TO STRAIN (SPAN) WIRE WEATHERABLE NYLON CABLE HANGERS (12" CTR.) DETAIL 'B'
4. TETHER CLAMP TO BE DESIGNED TO RELEASE UNDER 'HIGH WIND LOAD' TO PERMIT SIGNAL 'FREE SWING'.

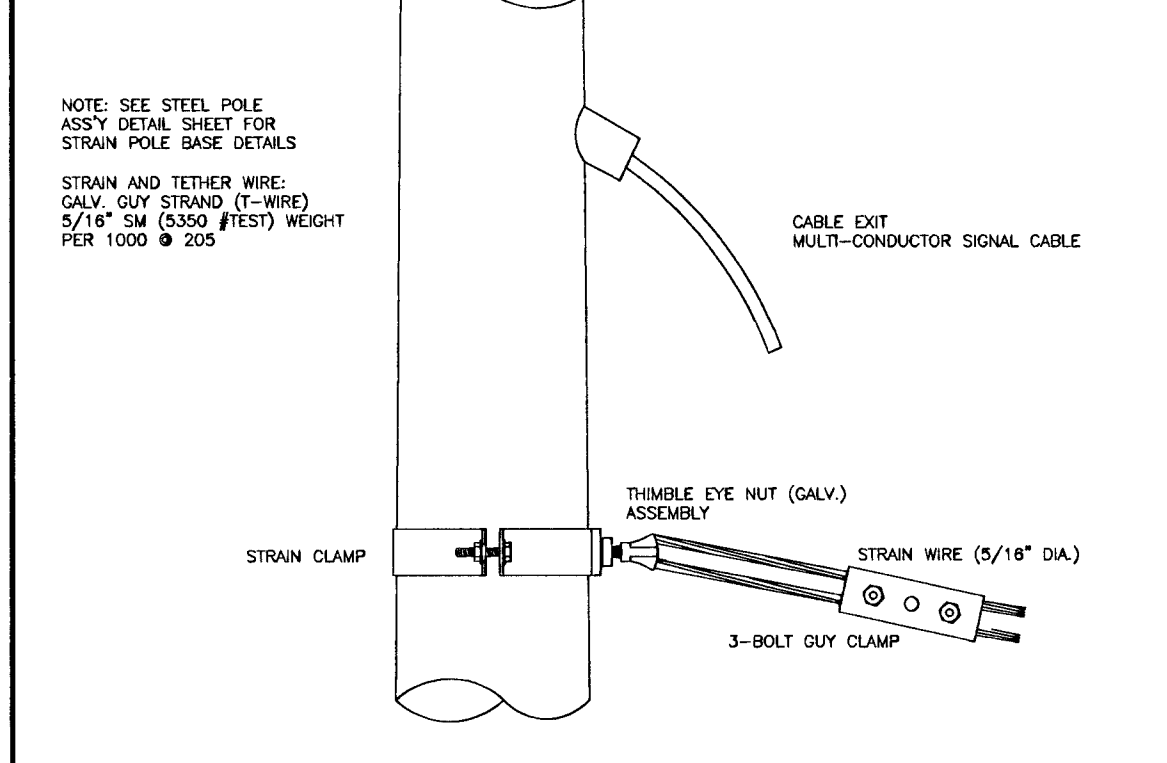


METER BOX & POWER DISCONNECT DETAILS

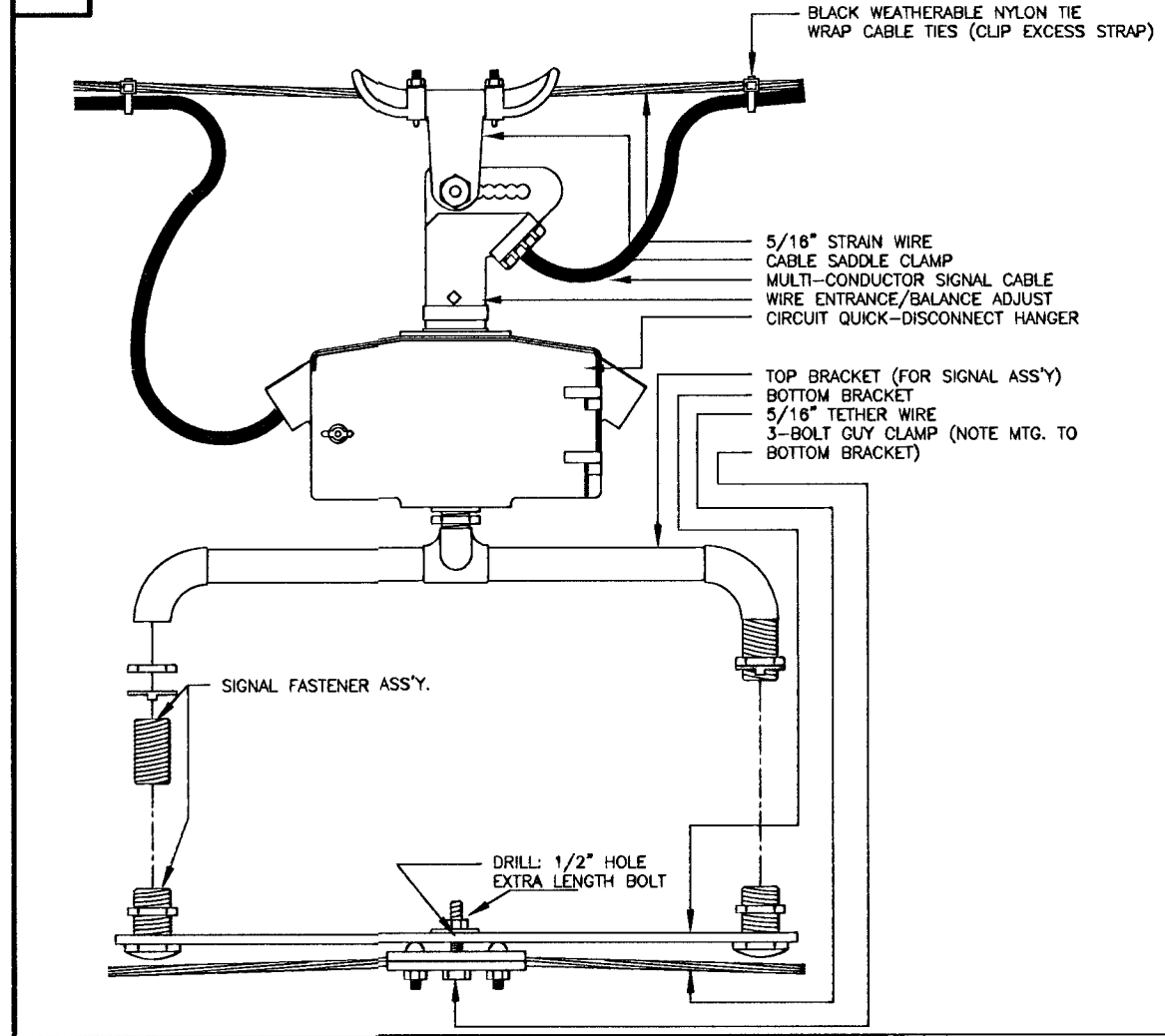
NOTE:
* TO BE MARKED WITH WHITE TAPE



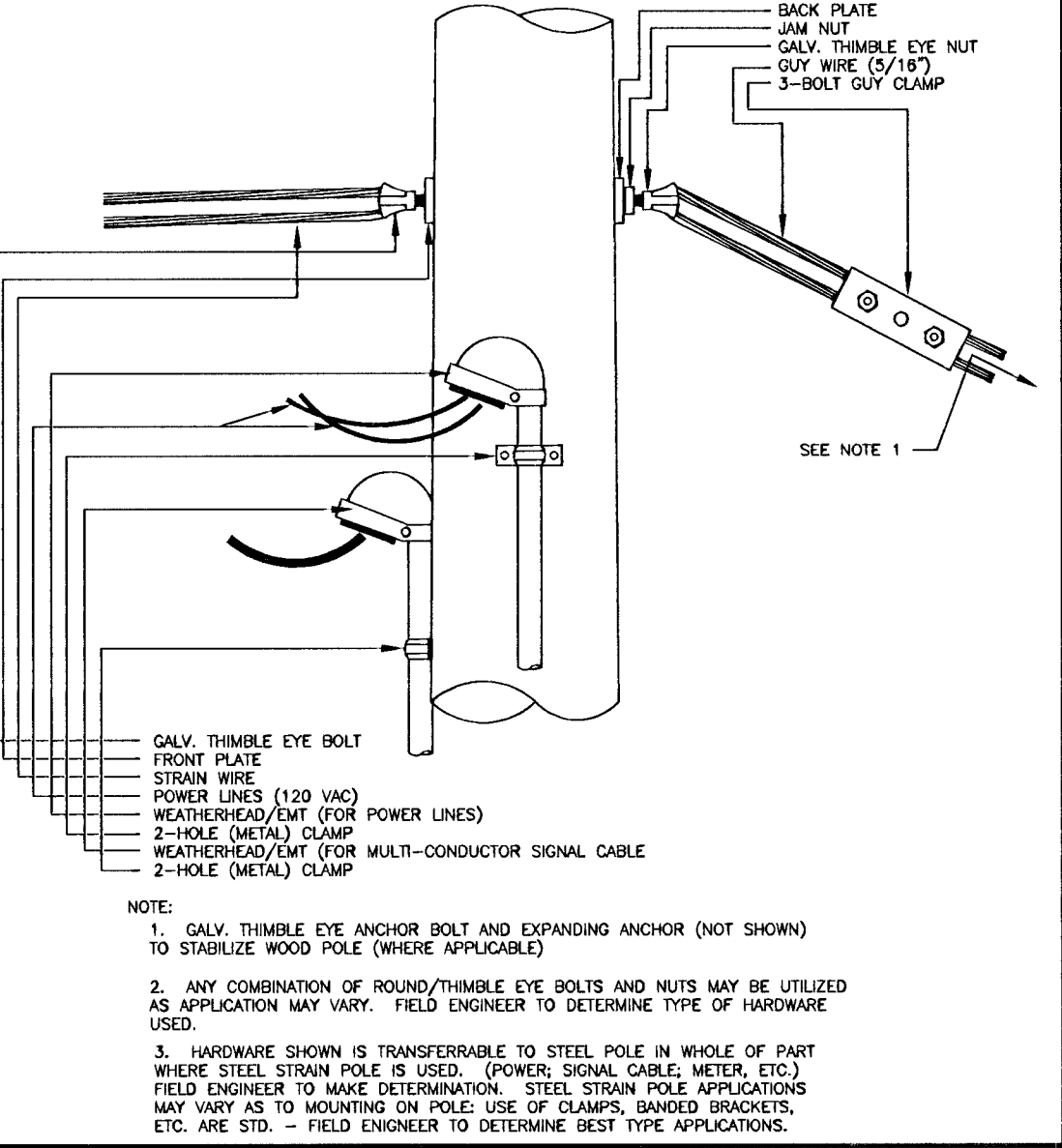
A STRAIN POLE ASSEMBLY



B SIGNAL BRACKET ASSEMBLY DETAILS



C WOOD POLE ASSEMBLY DETAILS KGE POLE EXCLUDED



PROJECT DESCRIPTION	
POWER POLE AND SPAN POLE ASSEMBLY DETAILS	
PROJECT NUMBER	INDEX NUMBER
472-83097	710212
DRAWN BY: T.M.	REVISED BY: L.B.
DATE: FEB. 98	DATE: 2/28/99
CITY OF WICHITA DEPARTMENT OF PUBLIC WORKS	
DIVISION OF TRAFFIC ENGINEERING	
RANDALL W. HOSKINS, P.E. TRAFFIC ENGINEER	SHEET 39 OF 75