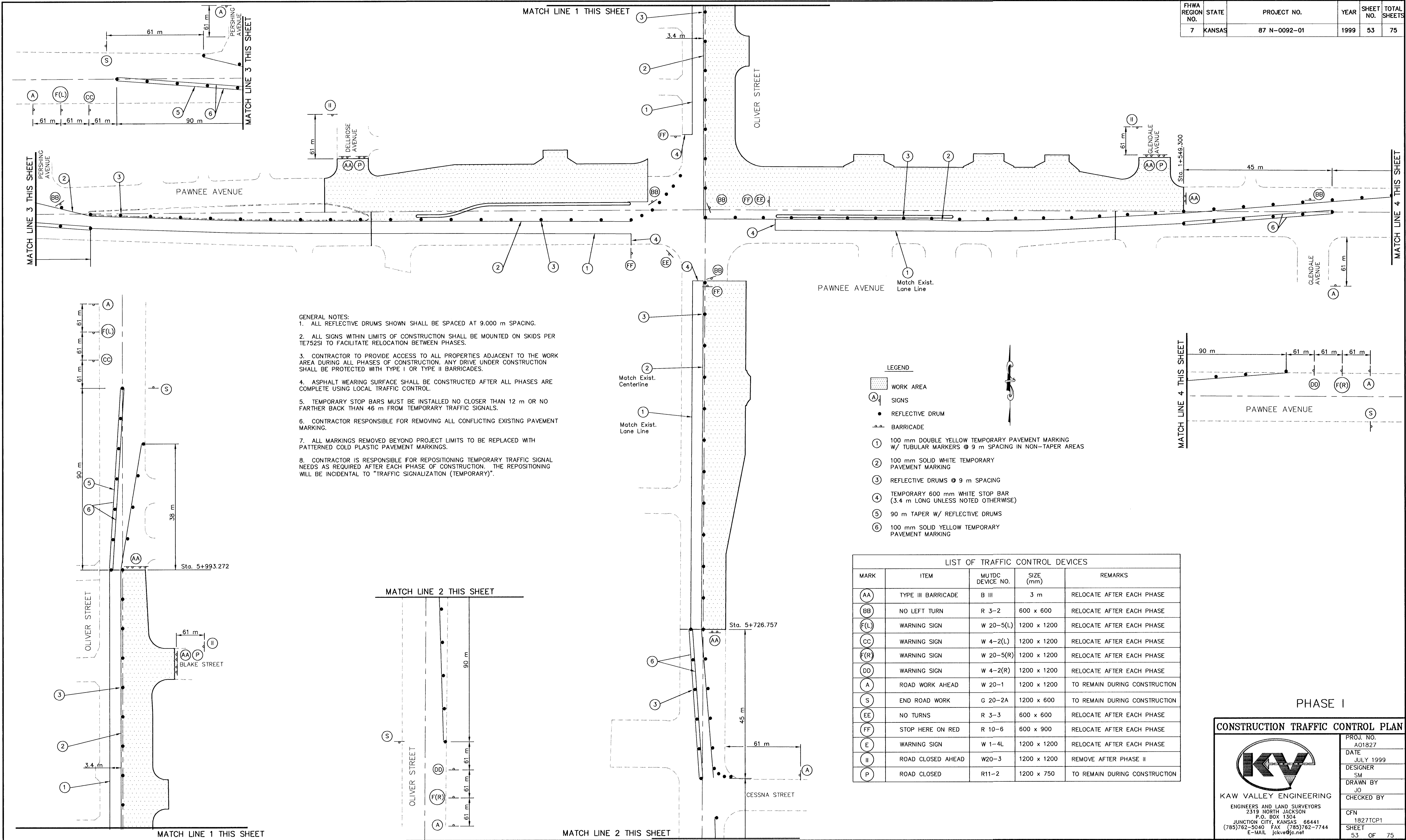


FHWA REGION NO.	STATE	PROJECT NO.	YEAR	SHEET NO.	TOTAL SHEETS
7	KANSAS	87 N-0092-01	1999	53	75



- GENERAL NOTES:**
1. ALL REFLECTIVE DRUMS SHOWN SHALL BE SPACED AT 9.000 m SPACING.
 2. ALL SIGNS WITHIN LIMITS OF CONSTRUCTION SHALL BE MOUNTED ON SKIDS PER TE752SI TO FACILITATE RELOCATION BETWEEN PHASES.
 3. CONTRACTOR TO PROVIDE ACCESS TO ALL PROPERTIES ADJACENT TO THE WORK AREA DURING ALL PHASES OF CONSTRUCTION. ANY DRIVE UNDER CONSTRUCTION SHALL BE PROTECTED WITH TYPE I OR TYPE II BARRICADES.
 4. ASPHALT WEARING SURFACE SHALL BE CONSTRUCTED AFTER ALL PHASES ARE COMPLETE USING LOCAL TRAFFIC CONTROL.
 5. TEMPORARY STOP BARS MUST BE INSTALLED NO CLOSER THAN 12 m OR NO FARTHER BACK THAN 46 m FROM TEMPORARY TRAFFIC SIGNALS.
 6. CONTRACTOR RESPONSIBLE FOR REMOVING ALL CONFLICTING EXISTING PAVEMENT MARKING.
 7. ALL MARKINGS REMOVED BEYOND PROJECT LIMITS TO BE REPLACED WITH PATTERNED COLD PLASTIC PAVEMENT MARKINGS.
 8. CONTRACTOR IS RESPONSIBLE FOR REPOSITIONING TEMPORARY TRAFFIC SIGNAL NEEDS AS REQUIRED AFTER EACH PHASE OF CONSTRUCTION. THE REPOSITIONING WILL BE INCIDENTAL TO "TRAFFIC SIGNALIZATION (TEMPORARY)".

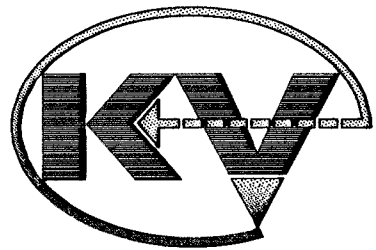
- LEGEND**
- WORK AREA
 - SIGNS
 - REFLECTIVE DRUM
 - BARRICADE
 - 1 100 mm DOUBLE YELLOW TEMPORARY PAVEMENT MARKING W/ TUBULAR MARKERS @ 9 m SPACING IN NON-TAPER AREAS
 - 2 100 mm SOLID WHITE TEMPORARY PAVEMENT MARKING
 - 3 REFLECTIVE DRUMS @ 9 m SPACING
 - 4 TEMPORARY 600 mm WHITE STOP BAR (3.4 m LONG UNLESS NOTED OTHERWISE)
 - 5 90 m TAPER W/ REFLECTIVE DRUMS
 - 6 100 mm SOLID YELLOW TEMPORARY PAVEMENT MARKING

LIST OF TRAFFIC CONTROL DEVICES

MARK	ITEM	MUTDC DEVICE NO.	SIZE (mm)	REMARKS
AA	TYPE III BARRICADE	B III	3 m	RELOCATE AFTER EACH PHASE
BB	NO LEFT TURN	R 3-2	600 x 600	RELOCATE AFTER EACH PHASE
F(L)	WARNING SIGN	W 20-5(L)	1200 x 1200	RELOCATE AFTER EACH PHASE
CC	WARNING SIGN	W 4-2(L)	1200 x 1200	RELOCATE AFTER EACH PHASE
F(R)	WARNING SIGN	W 20-5(R)	1200 x 1200	RELOCATE AFTER EACH PHASE
DD	WARNING SIGN	W 4-2(R)	1200 x 1200	RELOCATE AFTER EACH PHASE
A	ROAD WORK AHEAD	W 20-1	1200 x 1200	TO REMAIN DURING CONSTRUCTION
S	END ROAD WORK	G 20-2A	1200 x 600	TO REMAIN DURING CONSTRUCTION
EE	NO TURNS	R 3-3	600 x 600	RELOCATE AFTER EACH PHASE
FF	STOP HERE ON RED	R 10-6	600 x 900	RELOCATE AFTER EACH PHASE
E	WARNING SIGN	W 1-4L	1200 x 1200	RELOCATE AFTER EACH PHASE
II	ROAD CLOSED AHEAD	W20-3	1200 x 1200	REMOVE AFTER PHASE II
P	ROAD CLOSED	R11-2	1200 x 750	TO REMAIN DURING CONSTRUCTION

PHASE I

CONSTRUCTION TRAFFIC CONTROL PLAN



KAW VALLEY ENGINEERING
ENGINEERS AND LAND SURVEYORS
2319 NORTH JACKSON
P.O. BOX 1304
JUNCTION CITY, KANSAS 66441
(785)762-5040 FAX (785)762-7744
E-MAIL: jkve@jv.net

PROJ. NO.
AO1827

DATE
JULY 1999

DESIGNER
SM

DRAWN BY
JO

CHECKED BY

CFN
1827TCP1

SHEET
53 OF 75

\\ju11e\dw5\1827\1827tcp1.dwg Wed May 31 08:13:45 2000 JULIE