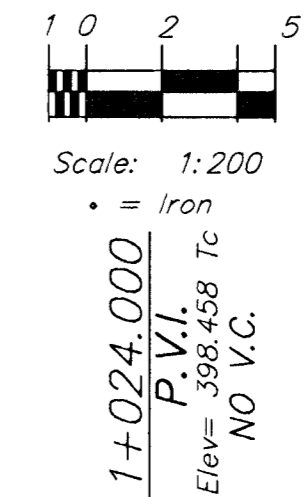


**BENCHMARKS**

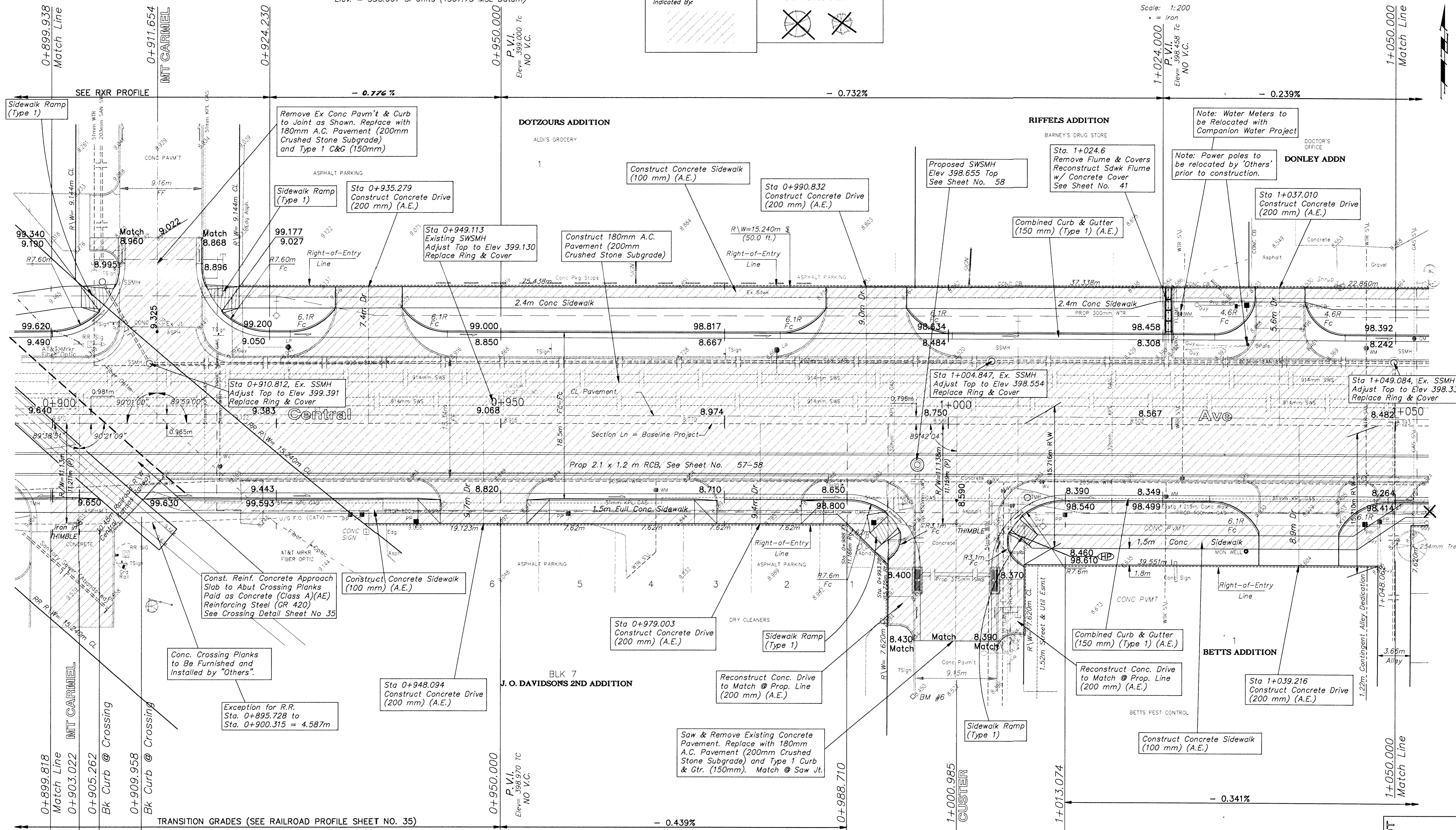
BM #6 - "□" Top of Curb @ 31.09m South and 4.72m West of the Centerline of both Custer and Central.  
Elev. = 398.607 SI Units (1307.75 MSL Datum)

**NOTE:**  
Pavement, Driveways, Sidewalks, Etc. To Be Removed Are Indicated By:

**NOTE:**  
Trees / Shrubs to be removed are marked thus:



FHWA REGION NO.	STATE	PROJECT NO.	FISCAL YEAR	SHEET NO.	TOTAL SHEETS
7	KANSAS	87N-0094-01	1998	18	202



**NOTE:**  
Water meters, Gas meters, Utility poles, and Electrical junction pedestals, boxes, etc. are to be REMOVED and RELOCATED as necessary by the respective utility company/owner PRIOR TO CONSTRUCTION of this project.

DESIGN STAFF	DRAWN	APPROVED	DATE	SCALE
SONNY	SONNY	JFB	NOV 98	NOTED

PROJECT NUMBER: 472 - 82906  
 CAPITAL IMPROVEMENT PROJECT  
**CENTRAL AVENUE**  
 Sta 0+899.818 to Sta 1+050.000

**BAUGHMAN COMPANY P. A.**  
 ENGINEERING, SURVEYING, & PLANNING  
 316-282-7271 • 316 ELLIS • WICHITA, KANSAS 67211