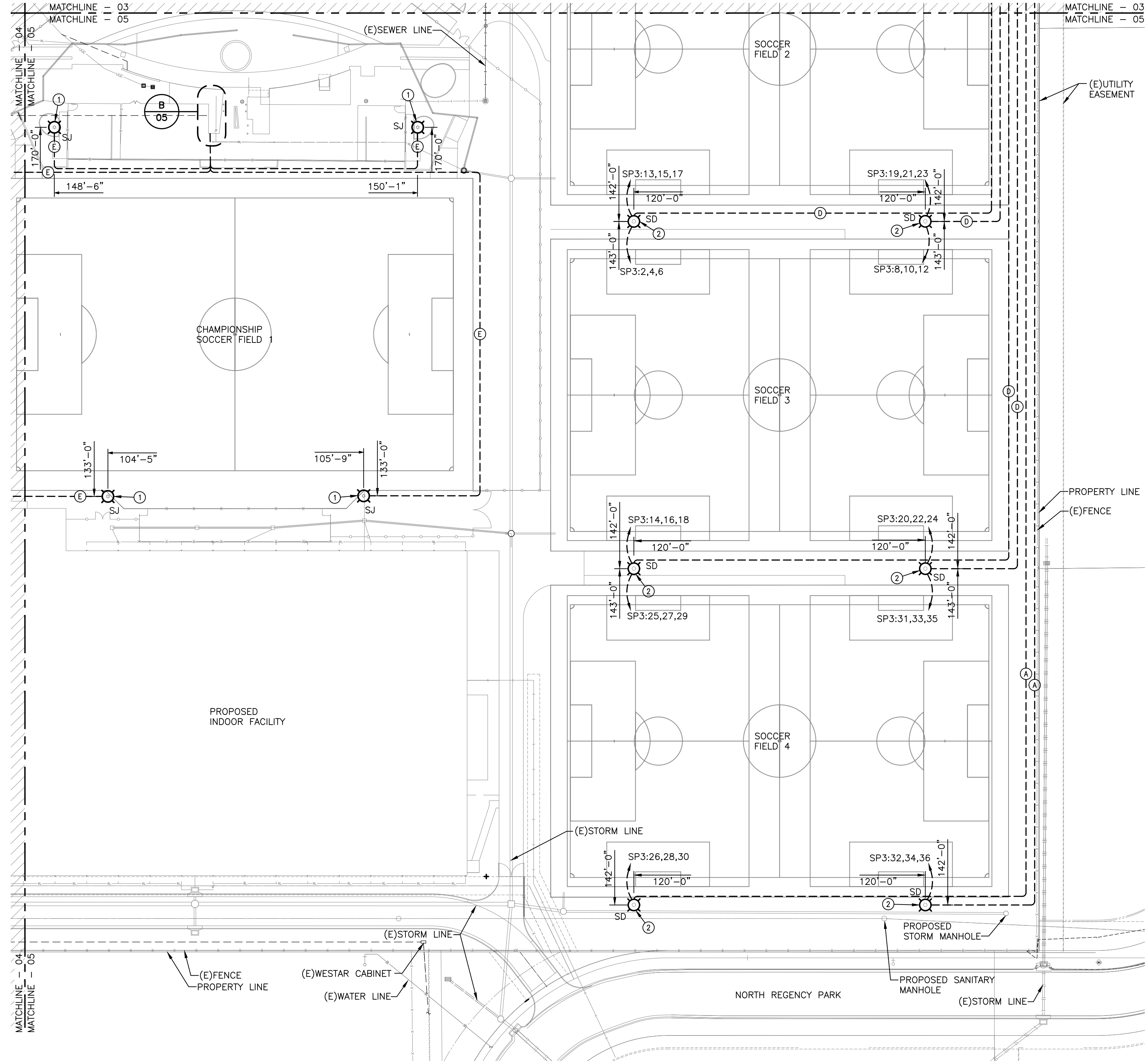


J:\PROJECTS\2017\1010567_COW_STRYKER_170567_CAD\SHS10_BLOG_MEP\SPORTS LIGHTING PACKAGE\170567_04-01-18_ELECTRICAL SPORTS LIGHTING PLAN.DWG
 PLOTTED: Wednesday, April 25, 2018 @ 03:39PM



A ELECTRICAL SITE PLAN - AREA D
SCALE: 1" = 50'-0"

FIXTURE LEGEND	
	SPORTS LIGHTING
HATCH LEGEND	
	AREA NOT COVERED ON THIS SHEET.

- GENERAL NOTES**
- EXISTING CONDITIONS SHOWN ON THE DRAWINGS WERE TAKEN FROM ORIGINAL DOCUMENTS AND FIELD OBSERVATIONS. THIS CONTRACTOR SHALL BE RESPONSIBLE FOR VERIFICATION OF EXISTING CONDITIONS. E.C. SHALL VISIT THE JOBSITE PRIOR TO BID AND VERIFY ALL EXISTING CONDITIONS.
 - UPON COMPLETION OF PROJECT, E.C. SHALL PROVIDE A FULL TYPED AND UPDATED PANEL DIRECTORY FOR EACH PANELBOARD AFFECTED BY THE SCOPE OF THIS PROJECT.
 - FEEDER ROUTING INDICATED ON THE DRAWINGS DOES NOT INDICATE NEC CODE REQUIRED PULL BOXES. E.C. SHALL BE RESPONSIBLE FOR LOCATING AND INSTALLING REQUIRED PULL BOXES FOR EACH FEEDER.
 - PROVIDE AND INSTALL 12"x12"x12" TIER 22 IN-GRADE OPEN BOTTOM QUARTZITE BOX OR EQUAL ADJACENT TO ALL SPORTS LIGHTING POLES ON FIELDS 2-TO-4. ROUTE CONDUCTORS THROUGH BOXES PRIOR TO ENTERING POLE BASE.

- KEYED NOTES**
- REPLACE EXISTING SPORTS LIGHTS ON EXISTING POLE WITH NEW LED FIXTURE. EXISTING MUSCO POLE AND BASE SHALL REMAIN. REPLACE EXISTING BALL ASTS AND EXISTING CONDUIT BOX WITH NEW DRIVERS IN NEW BOX PER SPECIFICATIONS.
 - PROVIDE AND INSTALL SPORTS LIGHTING BASE, POLE, FIXTURES, DRIVERS, ETC. PER SPECIFICATIONS.
 - REPLACE EXISTING LIGHTING CONTROL CABINET WITH NEW CONTROL CABINET FOR SPORTS LIGHTING CONTROL. RE-USE CONDUCTORS AS FEASIBLE. SEE SPECIFICATIONS FOR ADDITIONAL INFORMATION.
 - SEE SCHEDULE SHEET ON SHEET 07 FOR WORK TO BE DONE.
 - ROUTE NEW CONDUCTORS IN EXISTING 1" CONDUIT OVERHEAD IN ELECTRICAL ROOM.
 - ROUTE NEW CONDUCTORS IN EXISTING 1" CONDUIT UNDERGROUND FROM NEW LIGHTING CONTROL CABINET.
 - COORDINATE ALL WORK IN THIS ROOM WITH STADIUM IMPROVEMENT PACKAGE TO ENSURE THAT ONCE ROOF IS LOWERED, WORKING CLEARANCE REQUIREMENTS IN STADIUM IMPROVEMENT PACKAGE ARE MET.

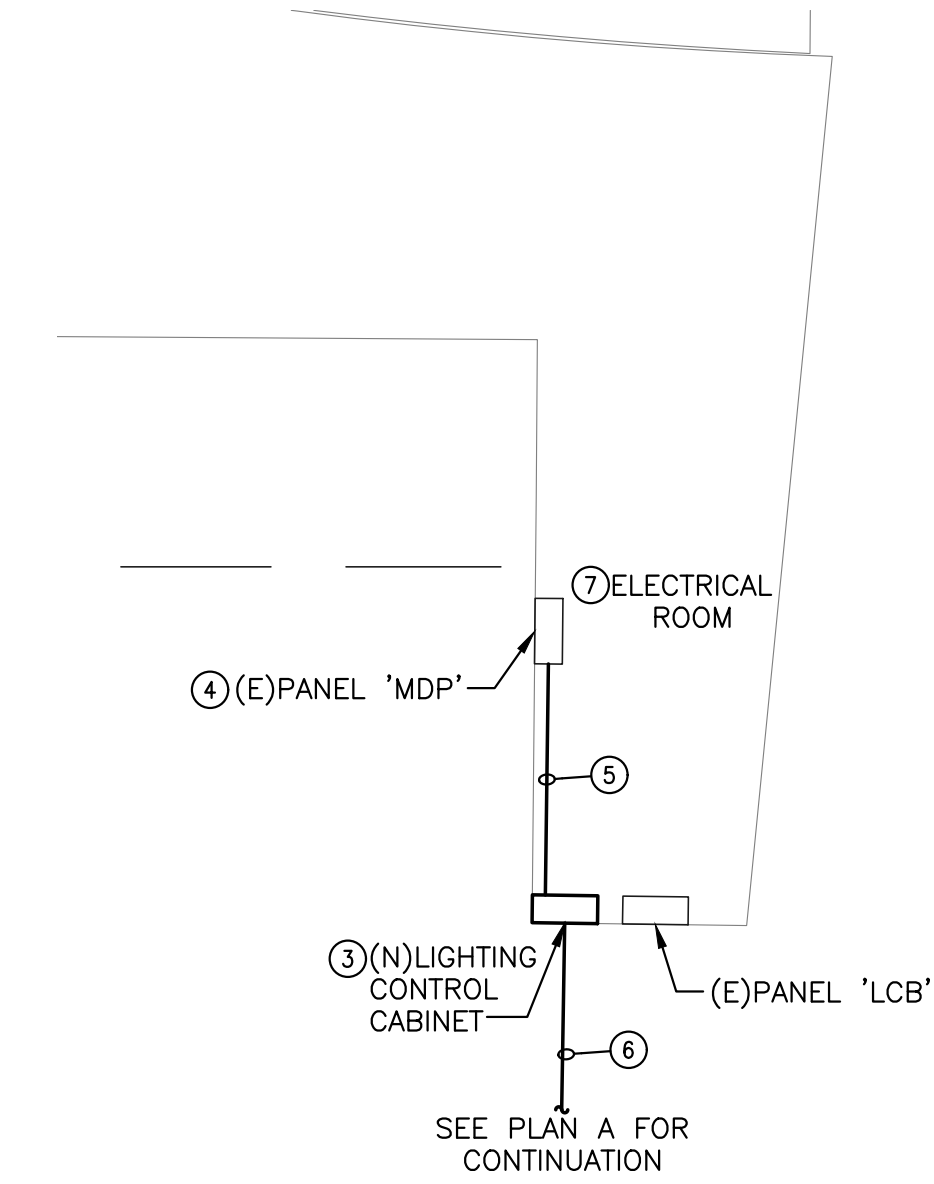
FEEDER SCHEDULE

(A)	PROVIDE (3)-#10, (1)-#10 GND IN EXISTING 1" CONDUIT FOR SPORTS LIGHTING POWER.
(D)	PROVIDE (3)-#10, (1)-#10 GND IN EACH EXISTING 1" CONDUIT FOR SPORTS LIGHTING POWER. (2) CONDUITS PER POLE.
(E)	PROVIDE (2)-#4, (1)-#10 GND IN EXISTING 1" CONDUIT FOR LIGHTING.

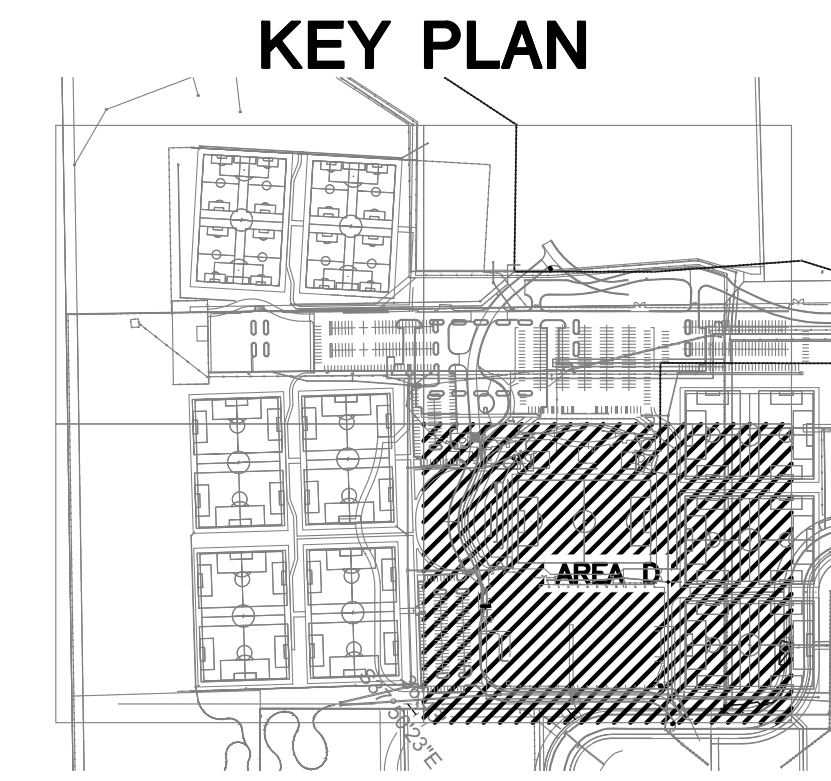
CONSTRUCTION SEQUENCE

THE CONTRACTOR SHALL COORDINATE ALL INSTALLATIONS WITH NATIONAL BUILDERS, MULTICON, MKEC, AND THE CITY TO ENSURE PROPER ACCESS TO ALL LOCATIONS IS PROVIDED AND OTHER TRADES ARE NOT AFFECTED BY THIS WORK. ANY DAMAGE TO THE CURB, SUBGRADE, DRAINAGE UTILITIES, AND GRADING CAUSED DURING THE INSTALLATION OF THE SPORTS LIGHTING SHALL BE CORRECTED TO THE SATISFACTION OF MKEC AND THE CITY PRIOR TO COMPLETION OF THE PROJECT. REFERENCE ALL AVAILABLE GRADING DRAWINGS, GEOTECHNICAL REPORTS, AND CONSTRUCTION PACKAGES FOR ADDITIONAL INFORMATION THAT MAY AFFECT YOUR BID SUCH AS GRADE CHANGES, CONSTRUCTION SEQUENCE OF THE FIELDS, ERECTION OF THE INDOOR FACILITY AND STADIUM IMPROVEMENTS, ETC. THE CONTRACTOR SHALL SUBMIT IN WRITING WITH THEIR BID CONFIRMATION THAT THE INSTALLATION OF ALL SYSTEMS REQUIRED FOR A FULLY OPERATIONAL SPORTS LIGHTING PACKAGE FOR EACH FIELD CAN BE CONSTRUCTED WHILE MAINTAINING A 3'-0" CLEARANCE FROM THE EDGE OF ANY PLAYING FIELD. ANY CRANES USED SHALL BE A TRACK TYPE TO BETTER DISTRIBUTE THE WEIGHT OVER A LARGER AREA.

DRIVER REQUIREMENTS:
DRIVERS FOR ALL NEW SPORTS LIGHTING SHALL BE CAPABLE OF OPERATING WITHIN A VOLTAGE RANGE OF 347V-480V. IF DRIVERS ARE NOT CAPABLE OF OPERATING WITHIN THIS RANGE THE MANUFACTURER MUST INCLUDE IN THEIR BID PRICE ANY INCREASE IN CONDUCTOR SIZE TO DECREASE VOLTAGE DROP SO IT IS WITHIN THE RANGE OF THE PROVIDED DRIVER.



B ENLARGED ELECTRICAL ROOM
SCALE: 1/8" = 1'-0"



PHASE 5 - SPORTS FIELD LIGHTING
STRYKER SPORTS
 WICHITA, KANSAS



©2018 MKEC Engineering All Rights Reserved www.mkec.com
 These drawings and their contents, including, but not limited to, all concepts, designs, & ideas are the exclusive property of MKEC Engineering (MKEC), and may not be used or reproduced in any way without the express consent of MKEC.

ELECTRICAL SITE PLAN - AREA D

PROJECT NO.	1701010567	
DATE	04-25-18	
SCALE	1"=50'-0"	
DESIGNED	CNG	
DRAWN	ECW	
CHECKED	JRBW	
ISSUED FOR CONST.	04-25-18	
NO.	REVISION	DATE
SHEET NO. 05		