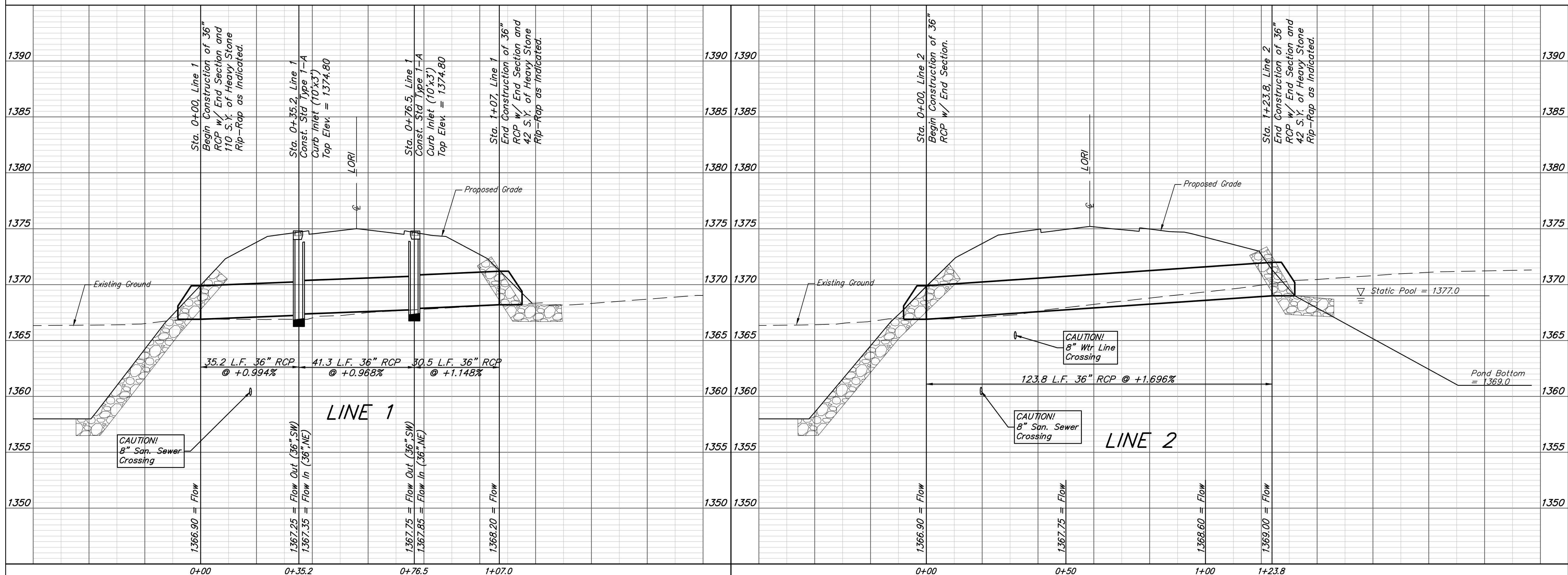
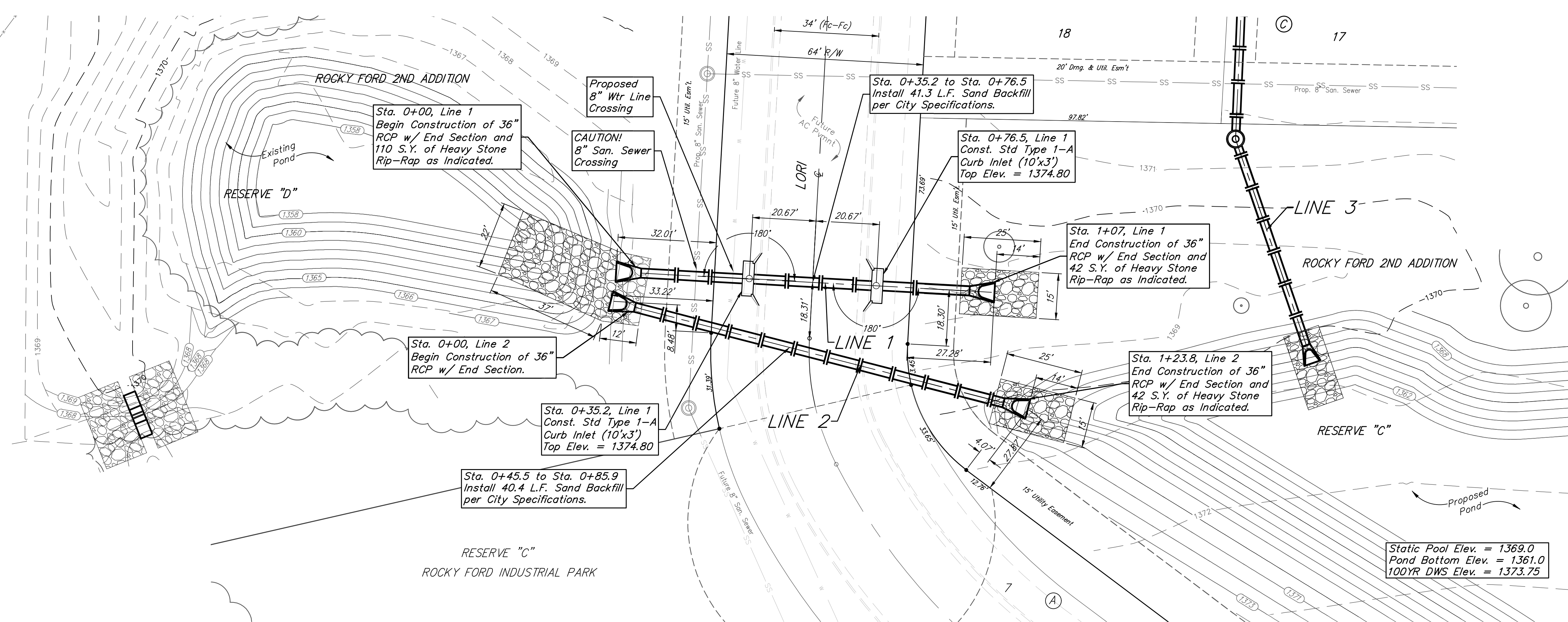


**BENCHMARK:**  
 City of Wichita Benchmark Disk at  
 South End of Hubguard on the SW  
 Cor. of R.C.B.C., West Side of Rock  
 Road, 706' North-northwest of the  
 Northwest Corner of Lot 44, Block  
 A, Rocky Ford Addition.  
 Elev. = 1368.14 NAVD88



		<b>Rocky Ford 2nd Addition</b> <b>LINE 1 &amp; LINE 2</b> <b>STORMWATER DRAIN #433</b>	
		<small>Baughman Company, P.A. 315 Ellis St. Wichita, KS 67211 P 316-262-7271 F 316-262-0149          ENGINEERING   SURVEYING   PLANNING   LANDSCAPE ARCHITECTURE</small>	
PROJECT NUMBER <b>468-85285</b>	DESIGN AEG	DRAWN JAK	
REVISIONS:	APPROVED	DATE 5/01/18	
	SCALE Noted	SHEET	
			<b>2 OF 21</b>

C:\Projects\Rocky Ford 2nd Addition\_Engineering\SWD\_17-12-6891\SWS Plans.dwg